

**Characteristics**

2-way pressure compensators series LCM are sandwich plate valves designed for stacking beneath a proportional directional control valve with a standardised mounting pattern.

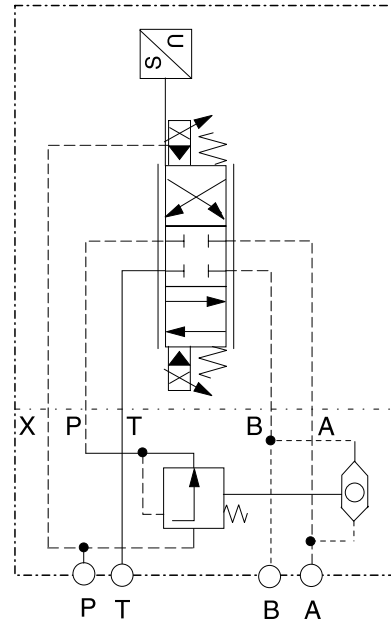
The valve maintains a constant pressure differential between ports P and A or P and B across the directional valve. When the cross sectional opening of the directional valves is held steady, a constant flow rate is achieved, regardless of consumer load fluctuations.

The control pressure applied to the spring side of the compensator spool is supplied from port A or B via a shuttle valve. Flow rate regulation is automatically effective in the port with the highest pressure.

**Technical data**

Series	LCM2	LCM3
Port size	NG06	NG10
Mounting pattern	NFPA D03 CETOP 3	NFPA D05 CETOP 5
Max. operating pressure [bar]	350	350
Pressure differential [bar]	10	10

**Application example**



Proportional DC valve model D31FS with 2 way pressure compensator LCM3 maintains a constant flow rate. The diagram shows the design according to code X.

**Ordering Code**

<b>LCM</b>		<b>PP</b>		<b>02</b>	<b>V</b>	
Pressure compensator	Size	Control connection	Pilot oil	Differential pressure 10 bar	Seal FPM	Design series (not required for ordering)

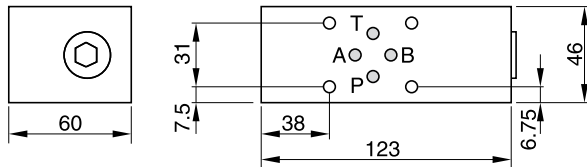
  

<table border="1" style="width: 100%; border-collapse: collapse;"> <thead> <tr> <th>Code</th> <th>Size</th> </tr> </thead> <tbody> <tr> <td style="text-align: center;">2</td> <td style="text-align: center;">NG06</td> </tr> <tr> <td style="text-align: center;">3</td> <td style="text-align: center;">NG10</td> </tr> </tbody> </table>	Code	Size	2	NG06	3	NG10	<table border="1" style="width: 100%; border-collapse: collapse;"> <thead> <tr> <th>Code</th> <th>Pilot oil</th> </tr> </thead> <tbody> <tr> <td style="text-align: center;">omit</td> <td style="text-align: center;">internal</td> </tr> <tr> <td style="text-align: center;">X<sup>1)</sup></td> <td style="text-align: center;">external</td> </tr> </tbody> </table>	Code	Pilot oil	omit	internal	X <sup>1)</sup>	external
Code	Size												
2	NG06												
3	NG10												
Code	Pilot oil												
omit	internal												
X <sup>1)</sup>	external												

<sup>1)</sup> NG10 only

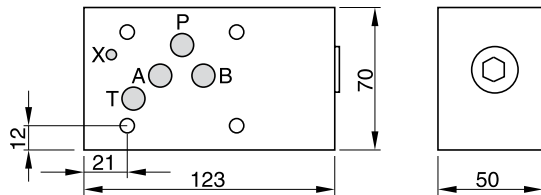
**Dimensions**

**LCM2**



Mounting screws: BK 403 (4 x M5 x 90)  
For mounting screws connected with the directional valves D1 or D31.

**LCM3**



Mounting screws: BK 412 (4 x M6x 90)  
The views show the mounting surface for the directional valve.

