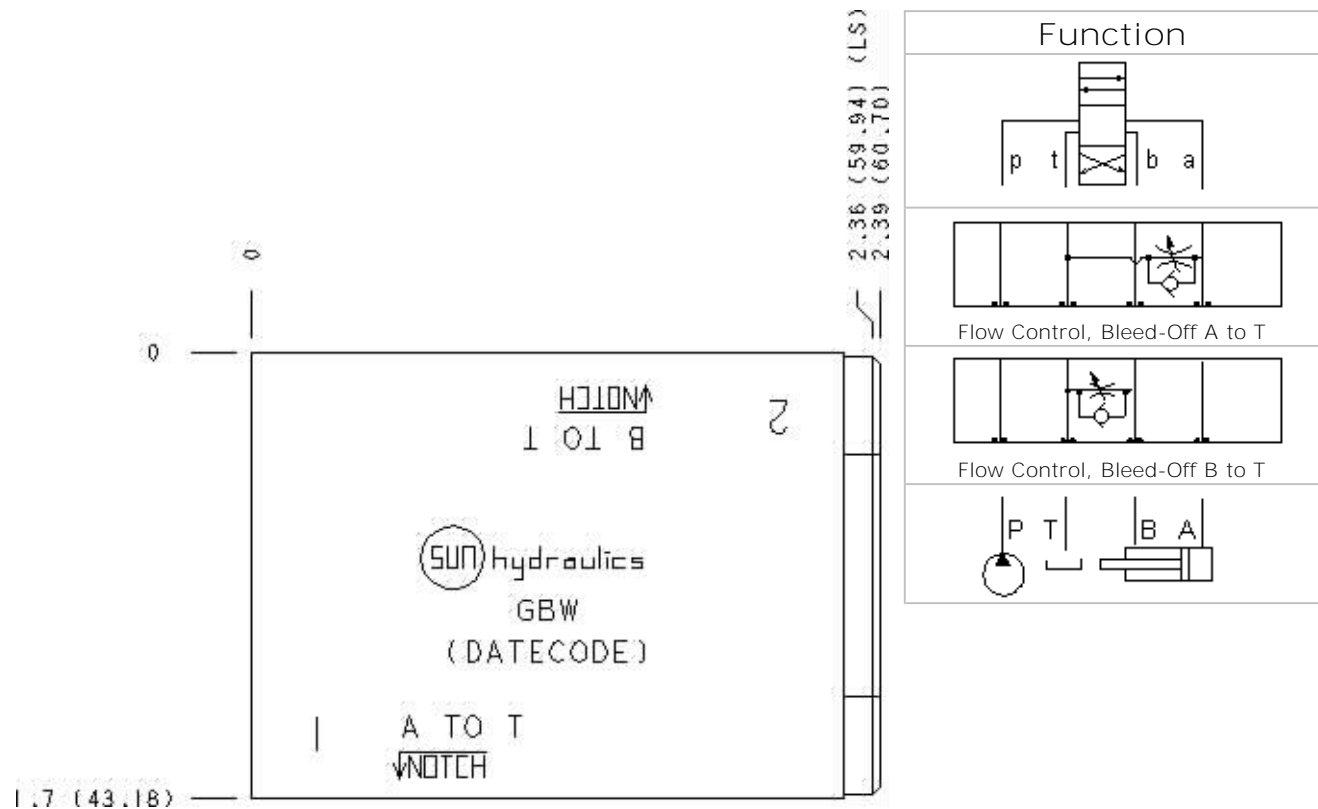


Functional Group:
 Products : Manifolds : Sandwich : Check : ISO 03 : B to P for regeneration circuits

Model:
 GBW

Face: 6



Port Headings and Sizes

Technical Data

| | U.S. Units | Metric Units |
|----------------------|------------|--------------|
| Model Weight | 0.59 lb. | 0.27 kg. |
| Cavity | | T-13A |
| Body Features | | A or B to T |
| Body Type | | Sandwich |
| Interface | | ISO 03 |
| Open Cavity Quantity | | 1 |
| Stack Height | 1.75 in. | 44,5 mm |

Option Selection

U.S. Dollar ▼

Aluminum Body Pressure Rating: 3000 psi (210 bar)
Ductile Iron Body Pressure Rating: 5000 psi (350 bar)

| Model Code | Description |
|------------|----------------------------------|
| GBW | Aluminum, Buna-N, U.S. Units |
| GBW/S | Ductile Iron, Buna-N, U.S. Units |
| GBW/V | Aluminum, Viton, U.S. Units |
| GBW/Y | Ductile Iron, Viton, U.S. Units |

Display Components

| | Description | Quantity |
|-------------|-------------|----------|
| 811-001-006 | Pin | 1 |
| 700-002 | Seal Plate | 1 |
| 500-001-012 | O-Ring | 4 |

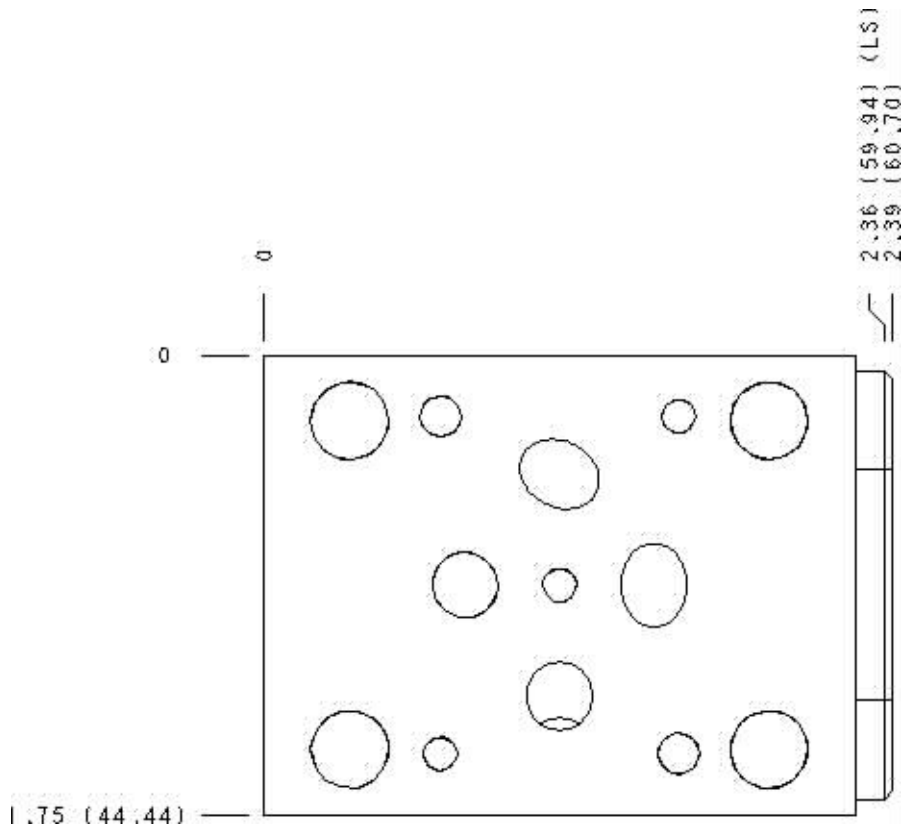
Special Notes

- For check valve application, use only with CX*A check valves - free flow nose to side.

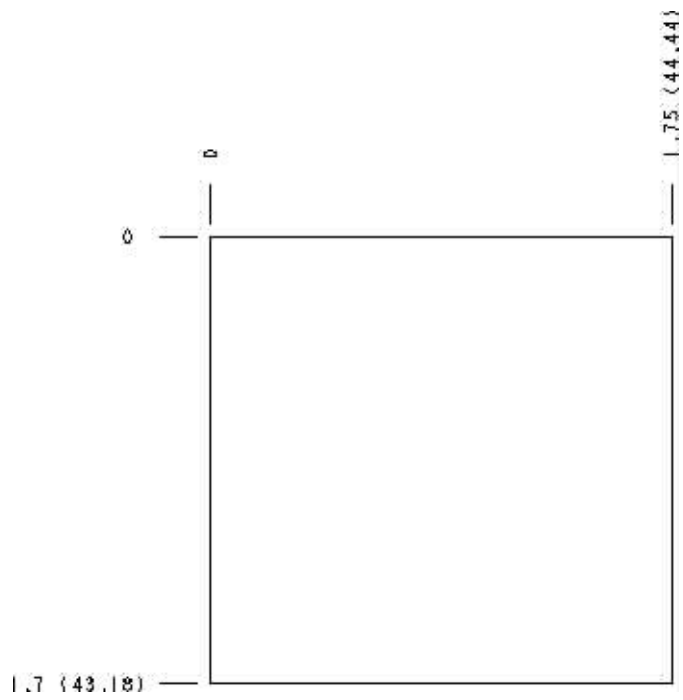
Related Information (opens in a new window)

- Studnuts and Studrods for sandwich bodies - metric units.
- How to install multi-functional sandwich bodies - US.
- How to install multi-functional sandwich bodies - CETOP
- Studnuts and Studrods for sandwich bodies - US units

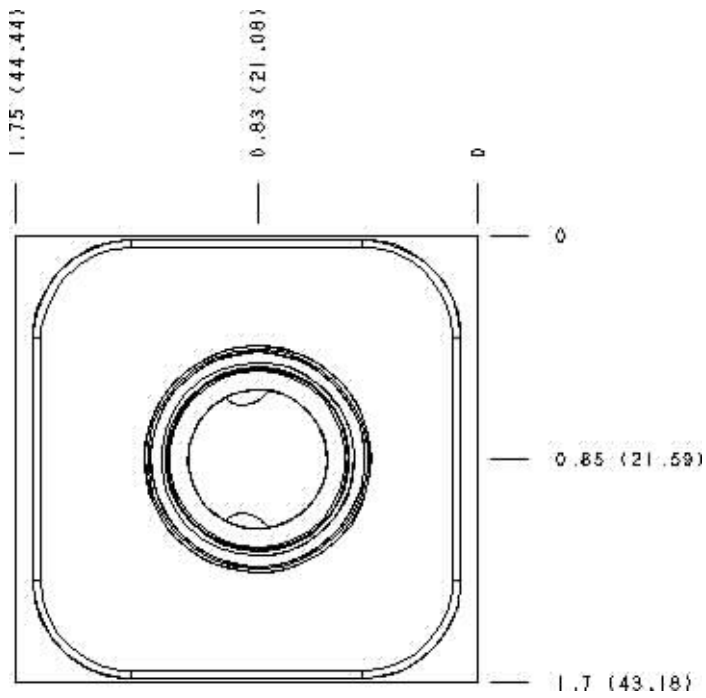
Face 2



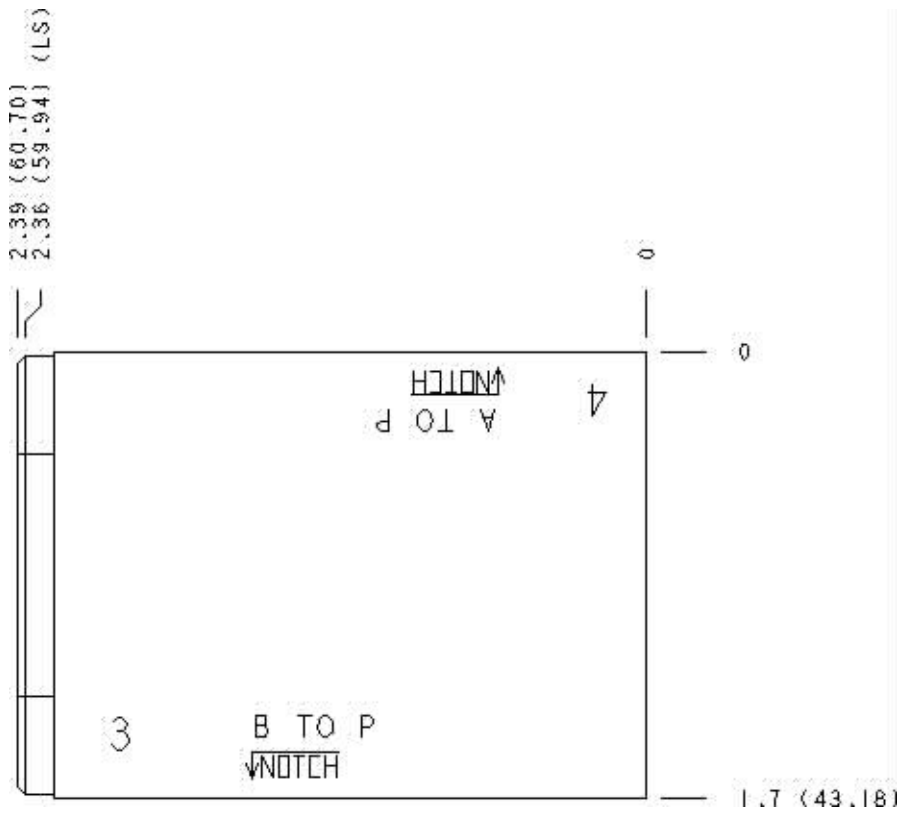
Face 5



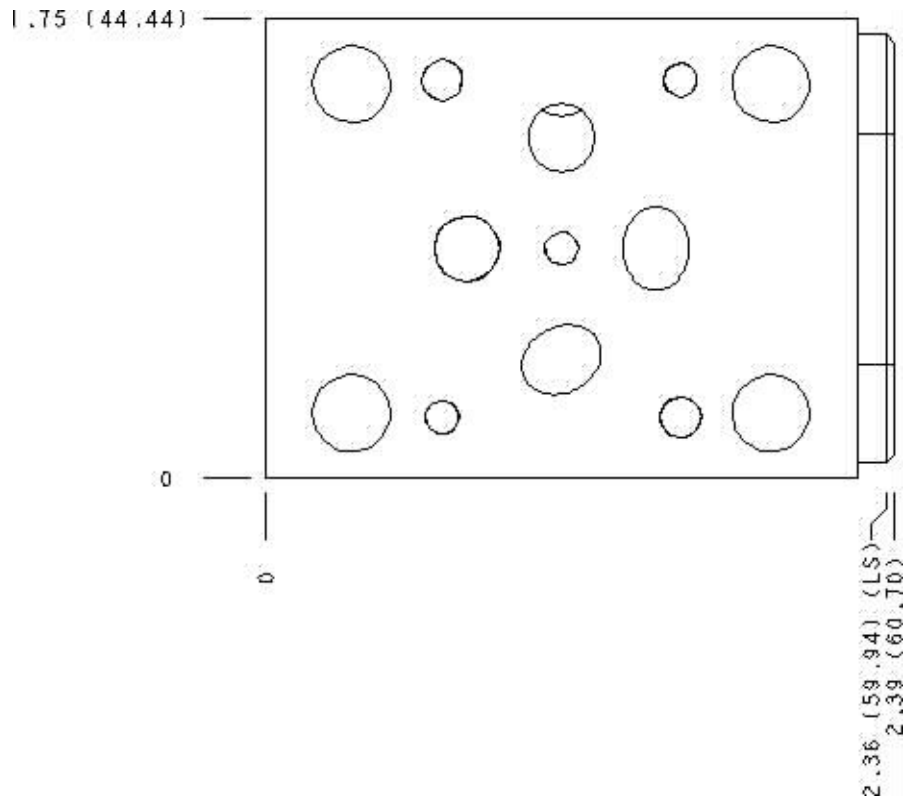
Face 7



Face 8



Face 10





Copyright © 2008-2009 Sun Hydraulics Corporation. All rights reserved.
Terms and Conditions - ISO Certification - Statement of Privacy