

KR8architecten

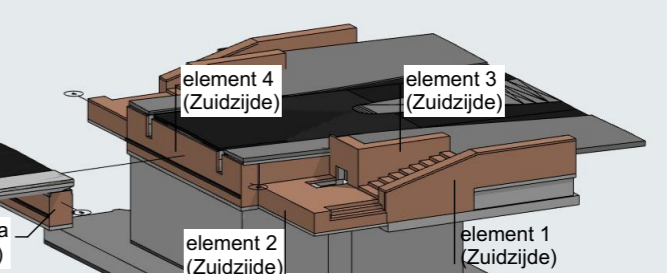
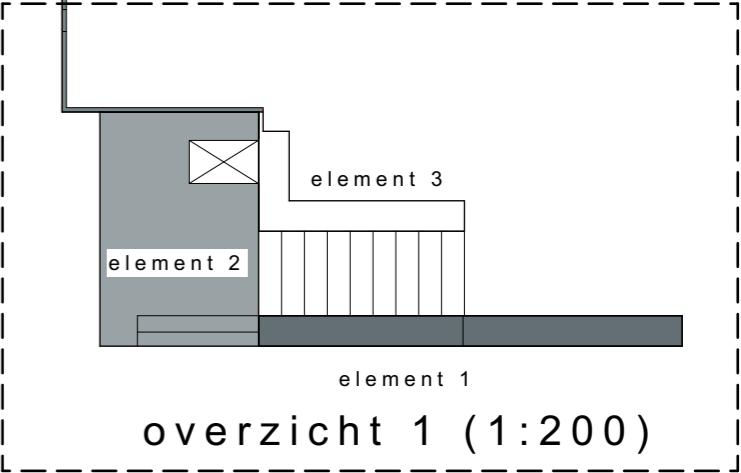
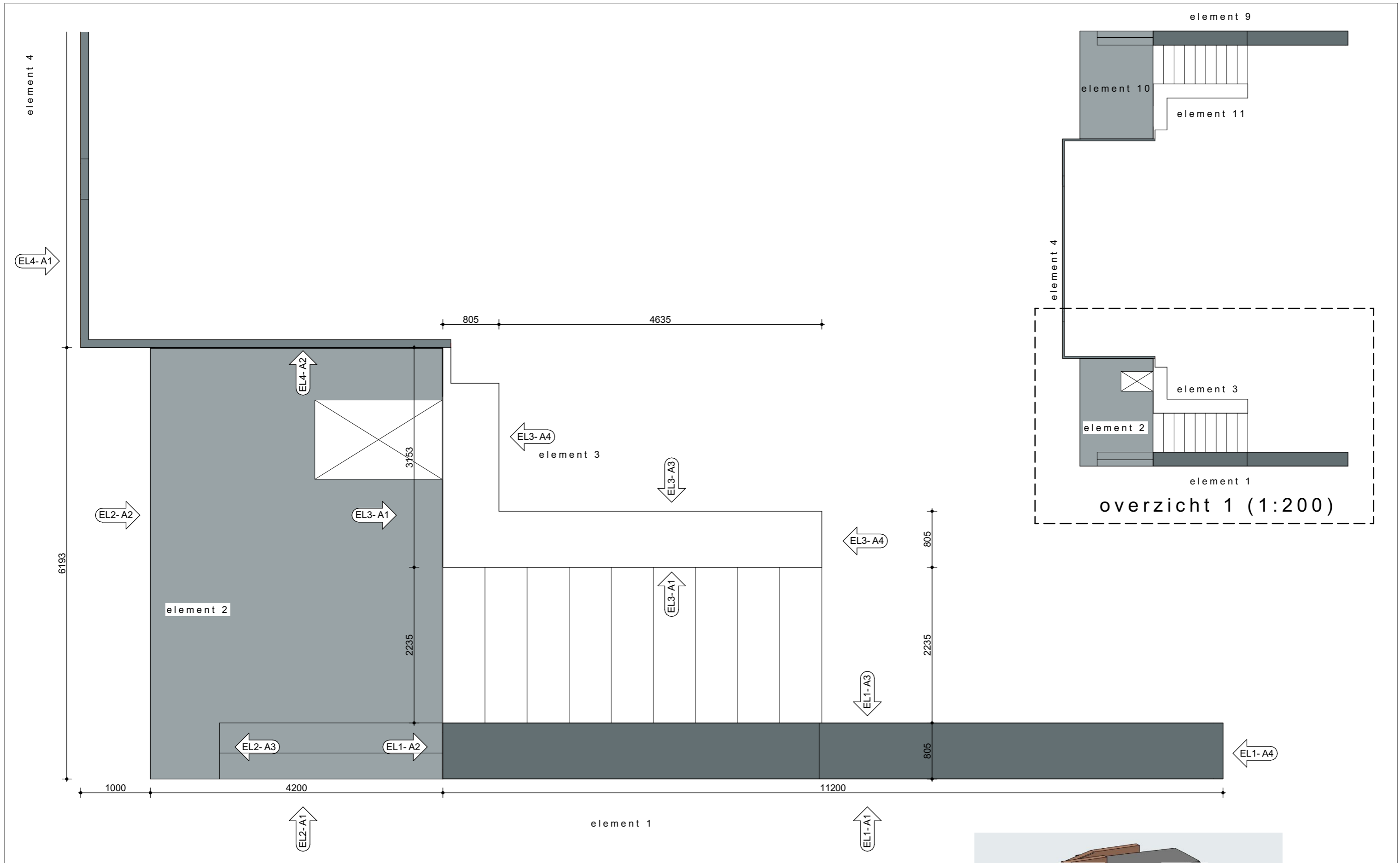
IJzertijdstraat 13 9531 RA Borger
T (0599) 23 56 43
info@kr8architecten.nl

gew. : 01-06-2026
gew. : 12-05-2026
gew. : 20-03-2026
datum : 13-02-2026
schaal : 1:50

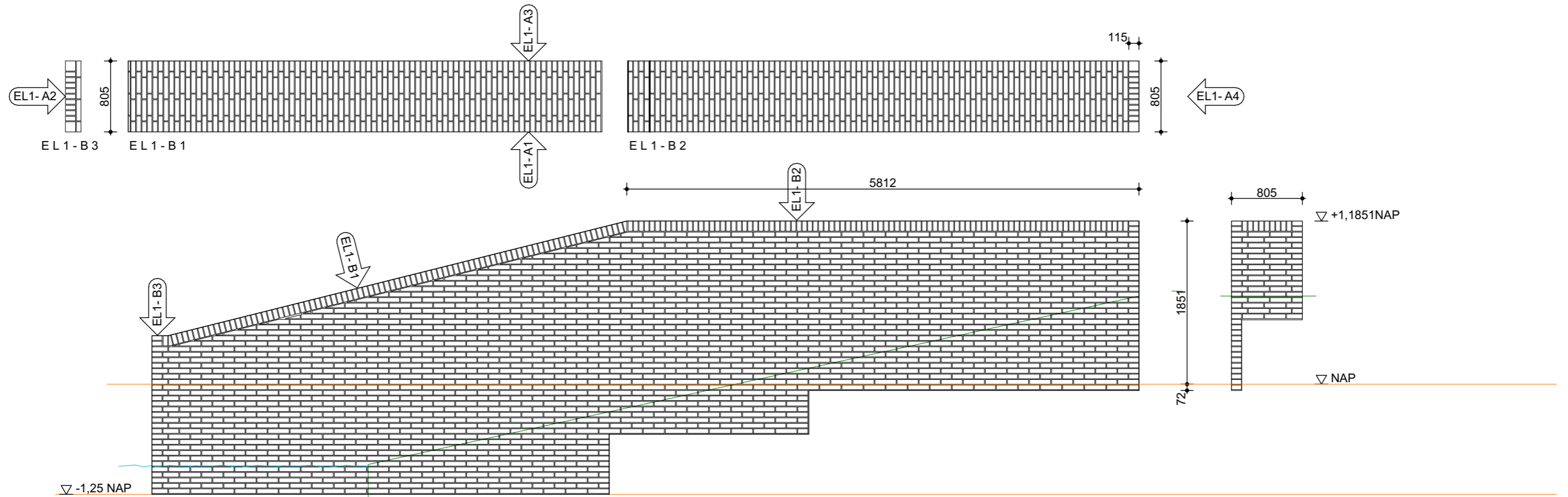
opdrachtgever
betreft
onderdeel

De Suikerzijde BV
Wubbo Ockelsbrug
DEFINITIEF ONTWERP

DO-01
blad
project
26013



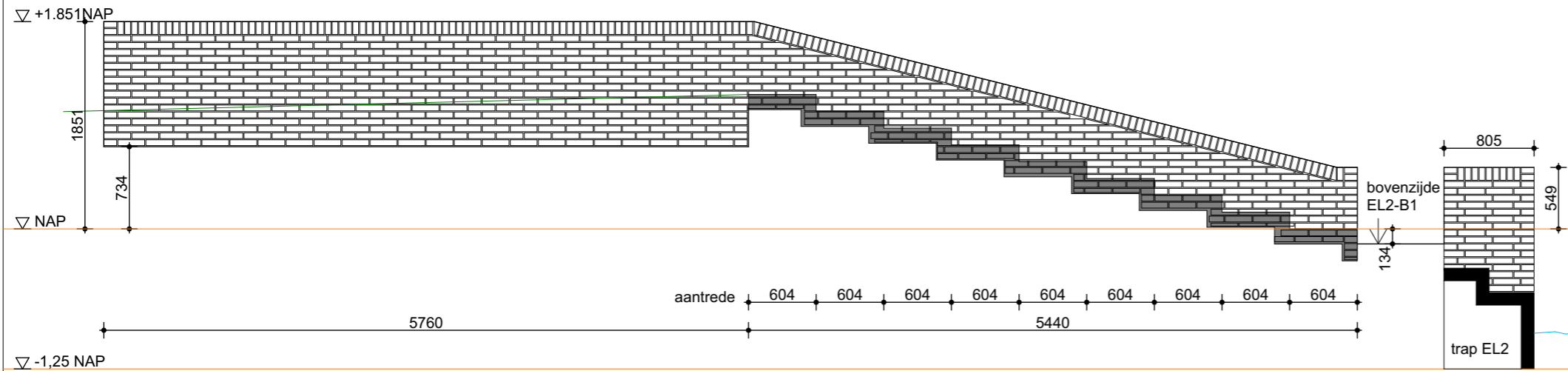
overzicht 1



uitgangspunt
start lagenmaat

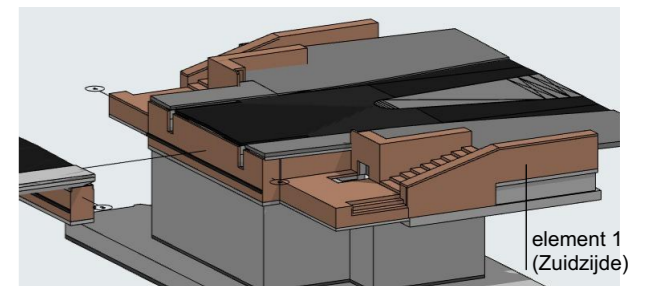
EL 1 - A 1
11200 mm:
1e laag: kop (115 mm) + drieklezoor (180 mm) 43 stenen + kop (115 mm)
2e laag: kop (115 mm) + drieklezoor (180 mm) + 45 stenen
steen 240x115x52 mm
lintvoeg 10 mm; lagenmaat 62 mm

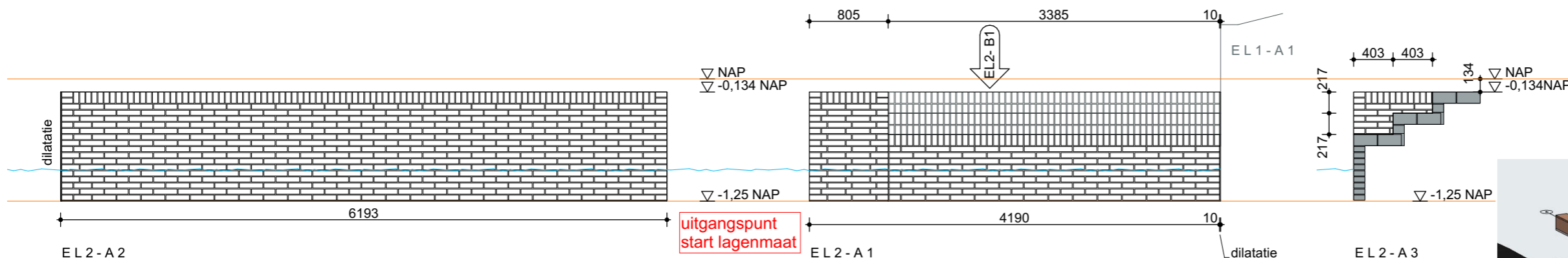
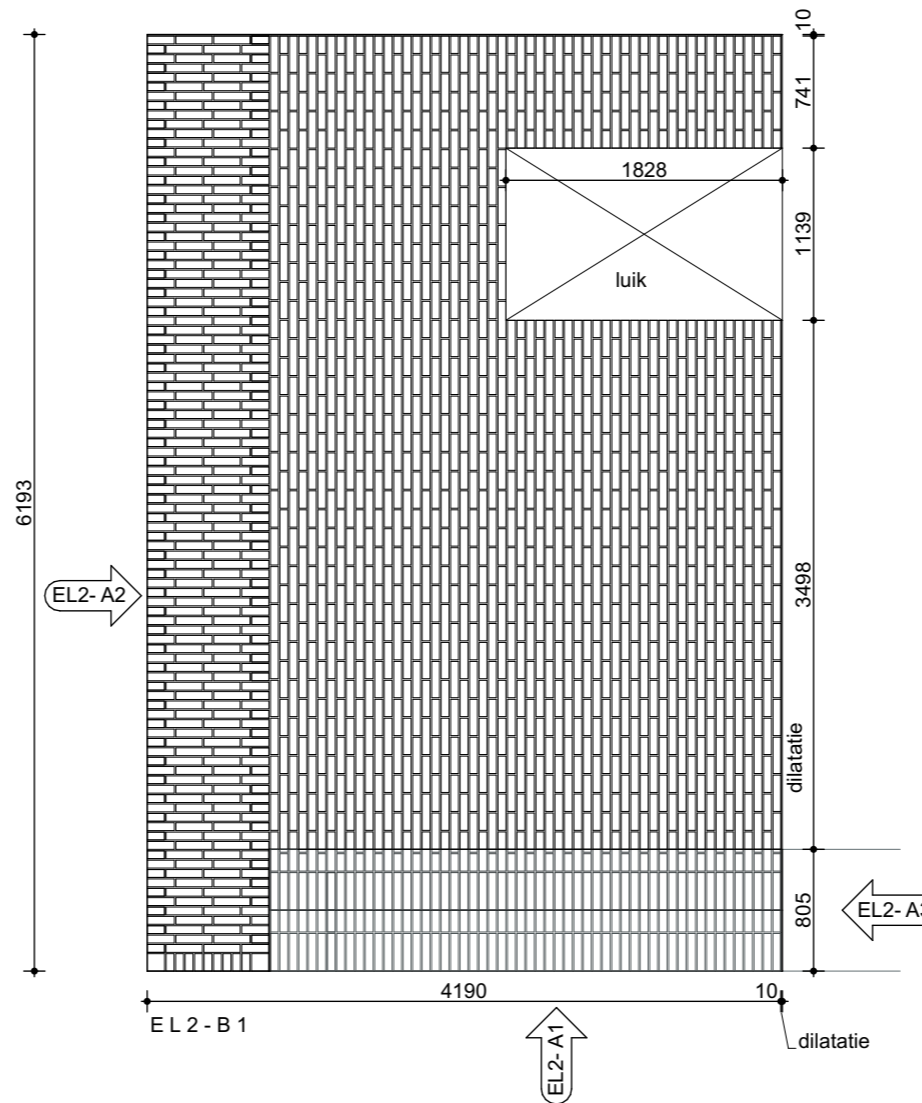
EL 1 - A 4
805 mm:
1e laag: kop (115 mm) + 2 stenen + drieklezoor (180 mm)
2e laag: drieklezoor (180 mm) + 2 stenen + kop (115 mm)
steen 240x115x52 mm



EL 1 - A 3
5760 mm:
1e laag: kop (115mm) + 22 stenen + kop (115 mm)
2e laag: 23 stenen

EL 1 - A 2

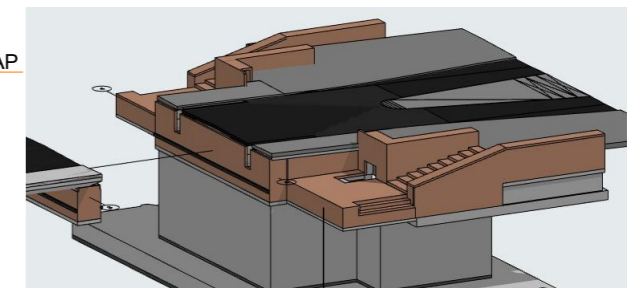




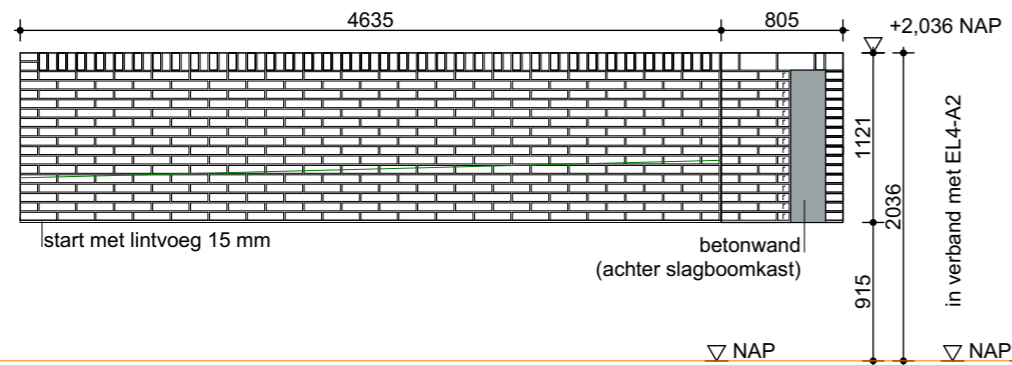
EL 2 - A 2
 6183 mm:
 1e laag: kop (115 mm) + drieklezoor (180 mm) + 23 stenen + kop (115 mm)
 2e laag: drieklezoor (180 mm) + 24 stenen
 steen 240x115x52 mm

EL 2 - A 1
 3385 mm:
 1e laag: kop (115 mm) + 13 stenen
 2e laag: 13 stenen + kop (115 mm)
 steen 240x115x52 mm
 lintvoeg 10 mm; lagenmaat 62 mm

EL 2 - A 3

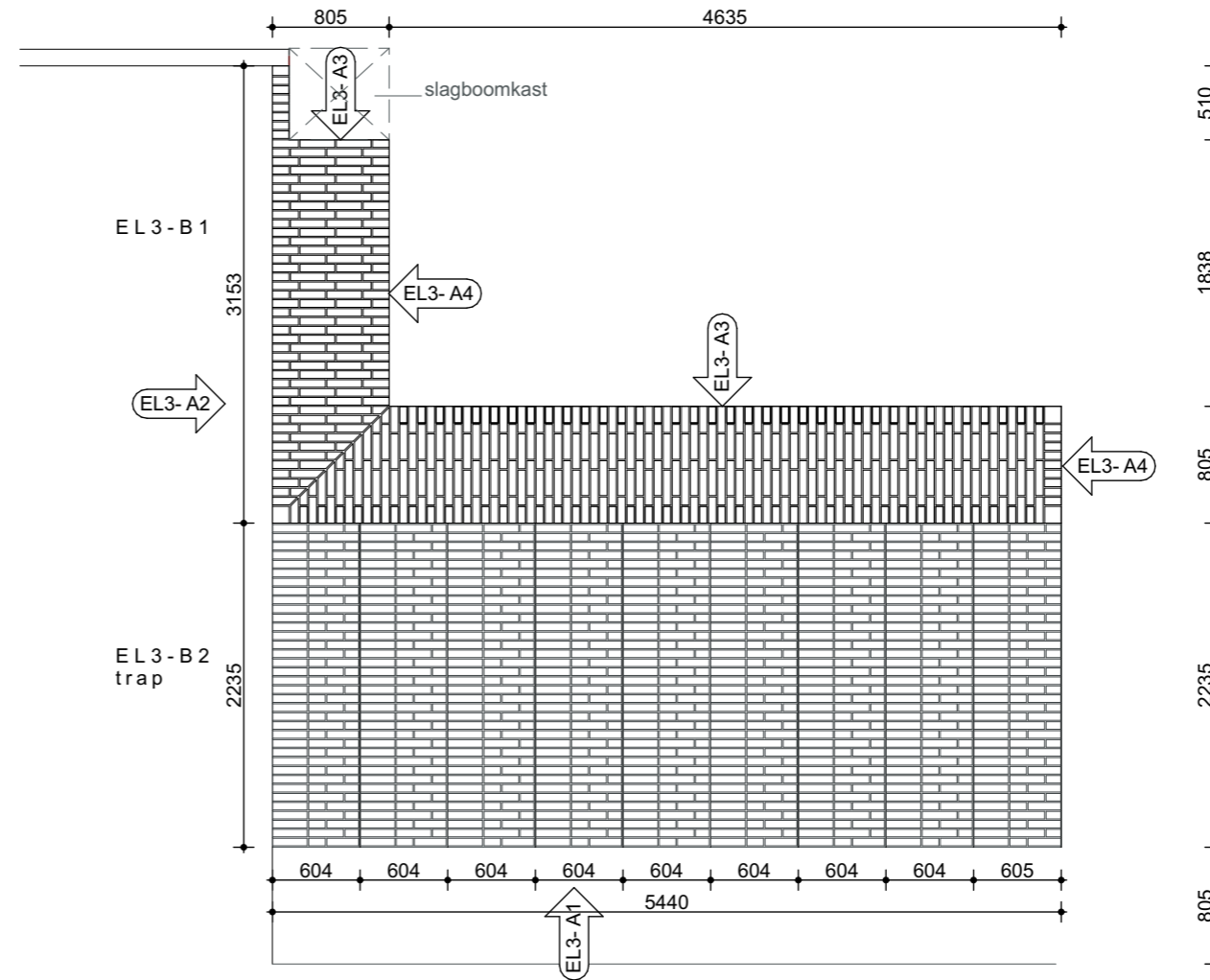
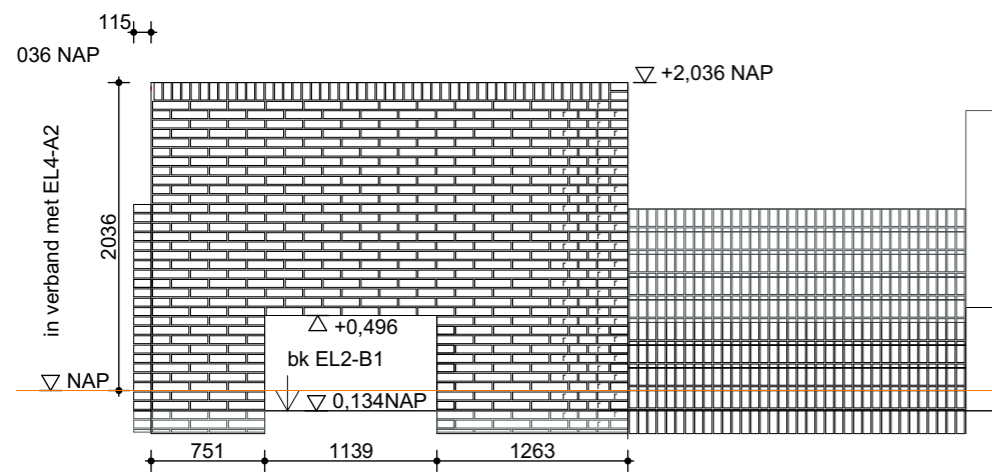


element 2
 (Zuidzijde)



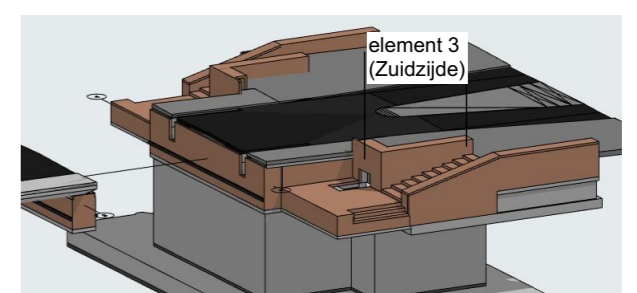
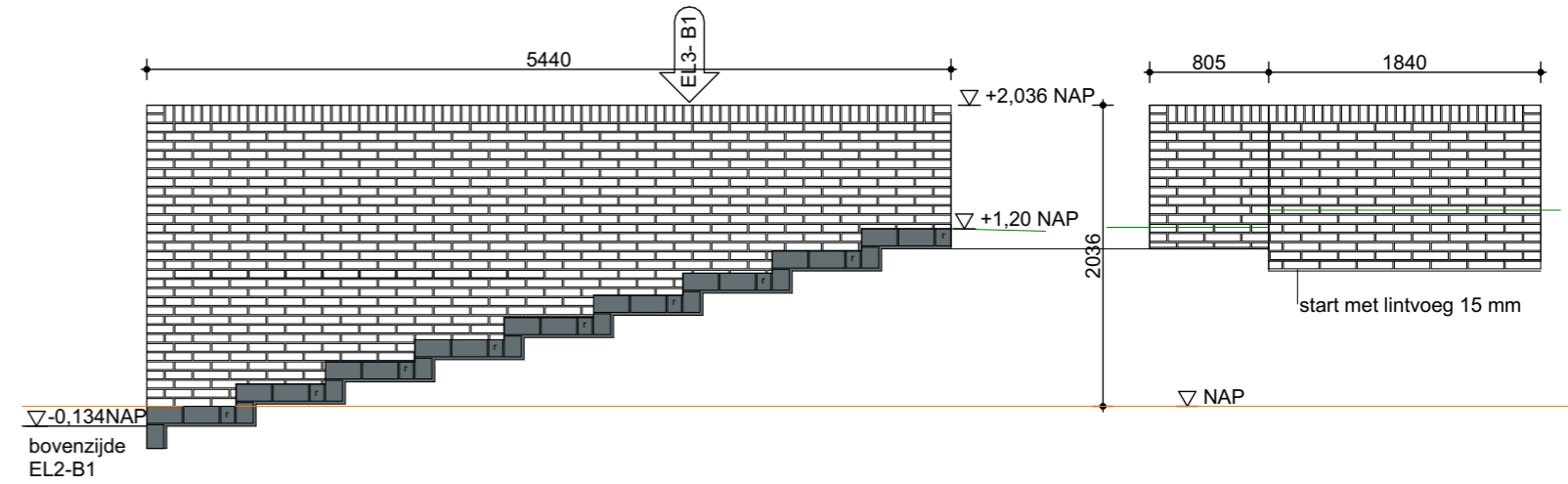
EL 3 - A 3

4635 mm:
 1e laag: kop (115 mm) + 18 stenen
 2e laag: 18 stenen + kop (115 mm)
 steen 240x115x52 mm
 lintvoeg. 10 mm; lagenmaat 62 mm

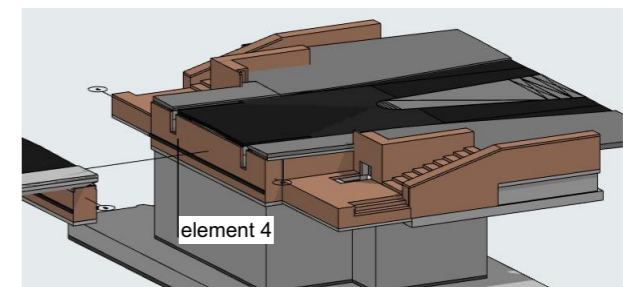
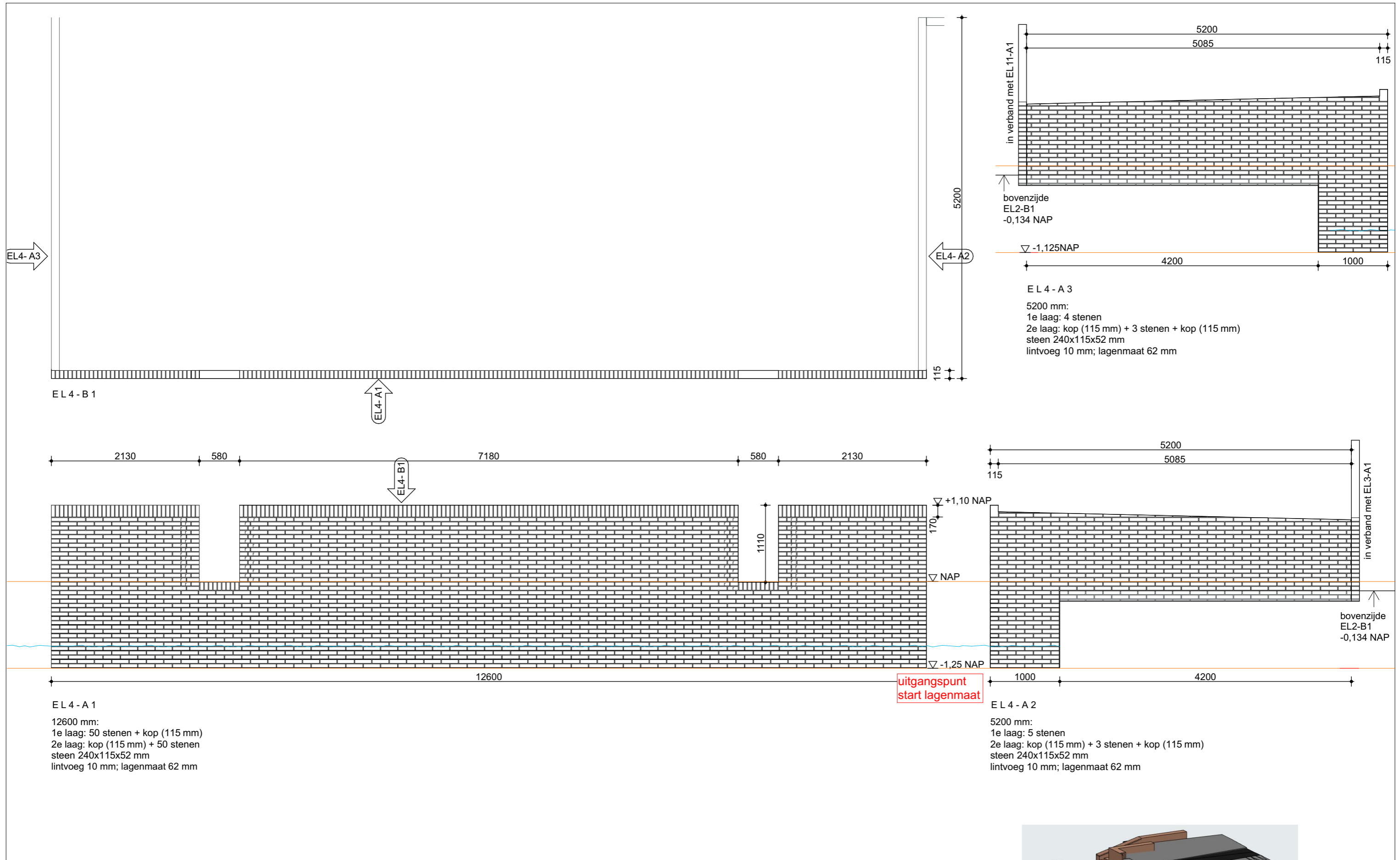


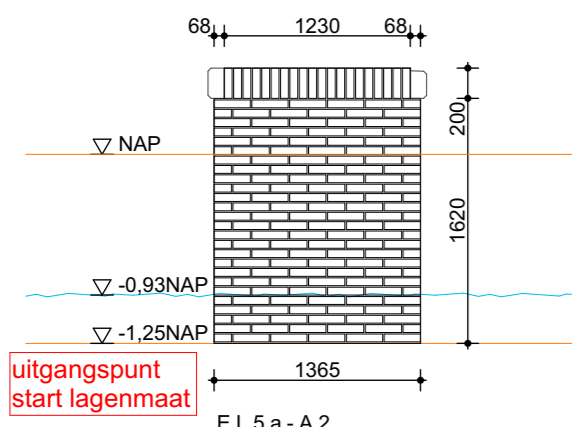
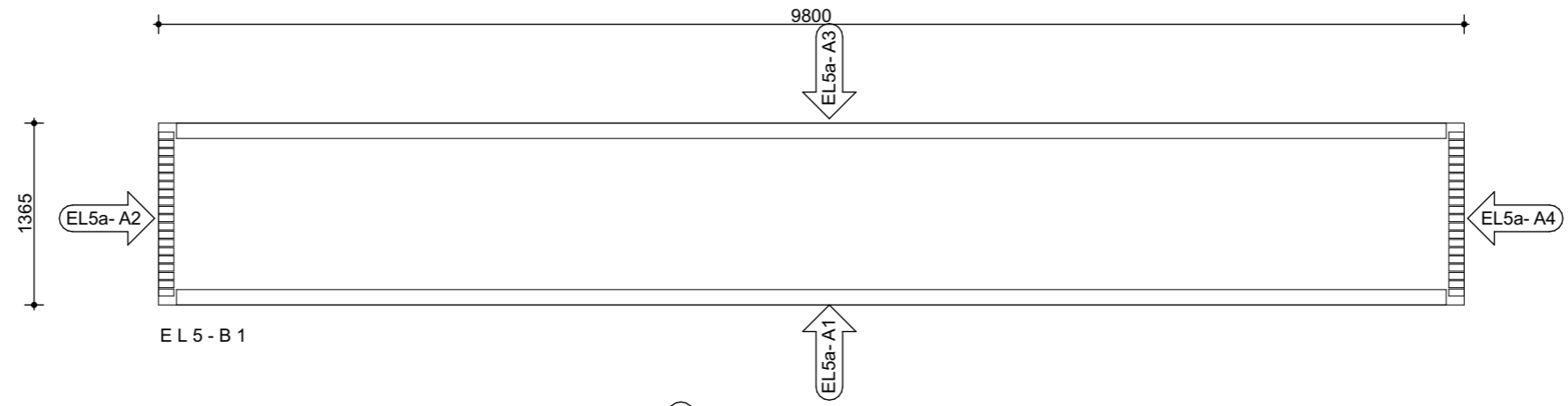
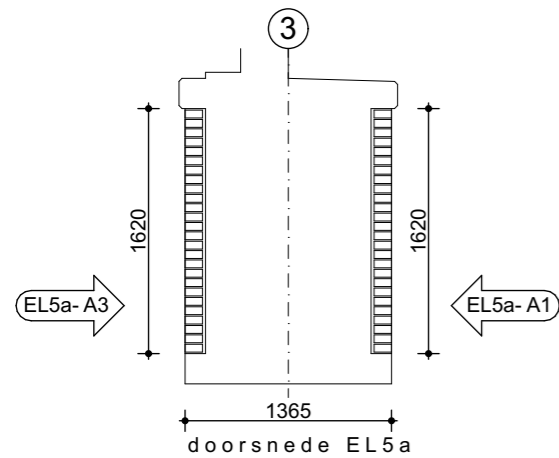
EL 3 - A 1

EL 3 - A 4

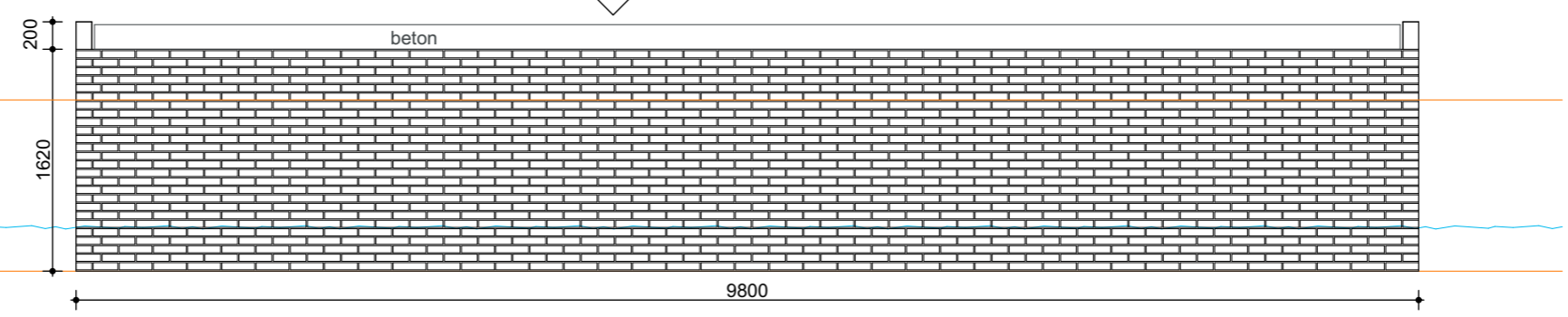


element 3

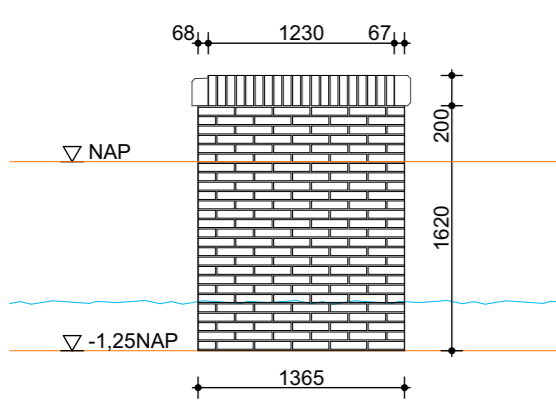




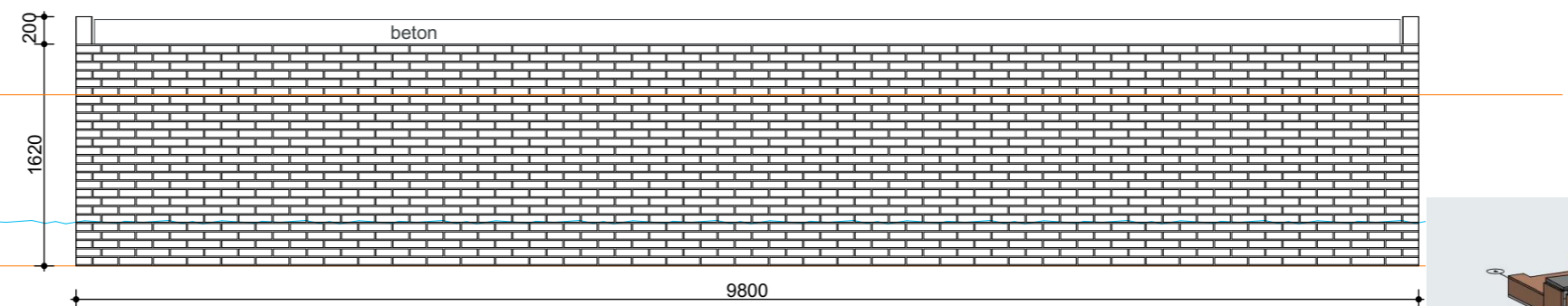
EL 5 a - A 2
 1365 mm:
 1e laag: kop (115 mm) + 5 stenen
 2e laag: 5 stenen + kop (115 mm)
 steen 240x115x52 mm
 lintvoeg 9,9 mm; lagenmaat 61,9 mm



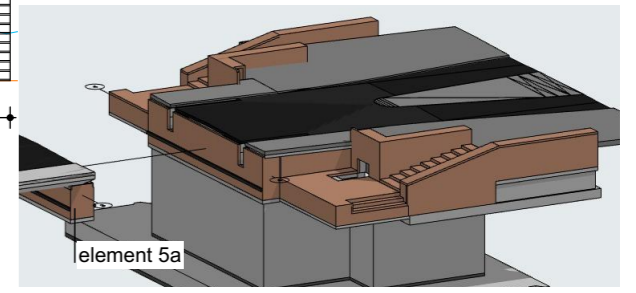
EL 5 a - A 1
 9800 mm:
 1e laag: kop (115 mm) + driekleזור (180 mm) + 38 stenen
 2e laag: driekleזור (180 mm) + 38 stenen + kop (115 mm)
 steen 240x115x52 mm
 lintvoeg 9,9 mm; lagenmaat 61,9 mm

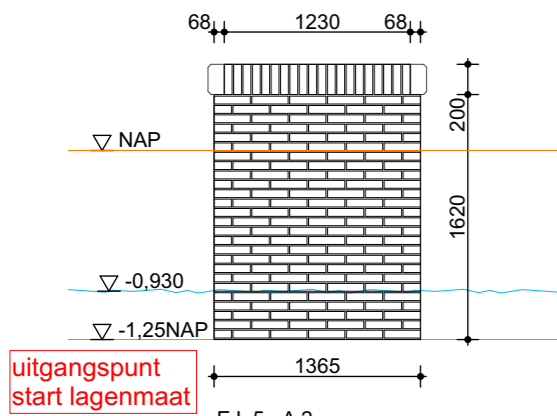
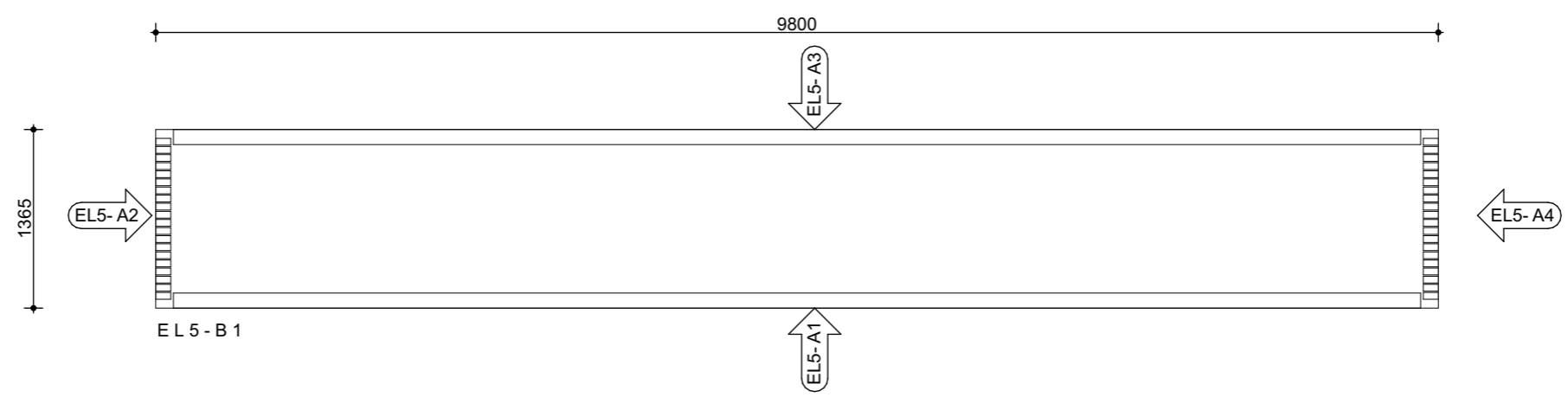
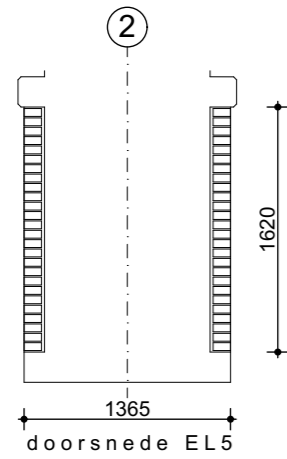


EL 5 a - A 4
 1365 mm:
 1e laag: kop (115 mm) + 5 stenen
 2e laag: 5 stenen + kop (115 mm)
 steen 240x115x52 mm
 lintvoeg 9,9 mm; lagenmaat 61,9 mm

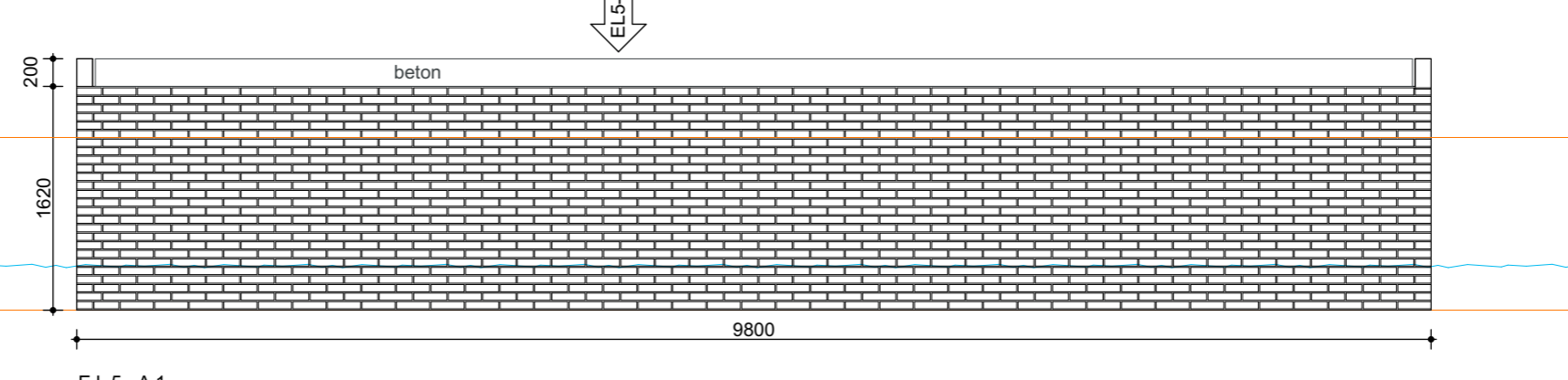


EL 5 a - A 3
 9800 mm:
 1e laag: kop (115 mm) + driekleזור (180 mm) + 38 stenen
 2e laag: driekleזור (180 mm) + 38 stenen + kop (115 mm)
 steen 240x115x52 mm
 lintvoeg 9,9 mm; lagenmaat 61,9 mm

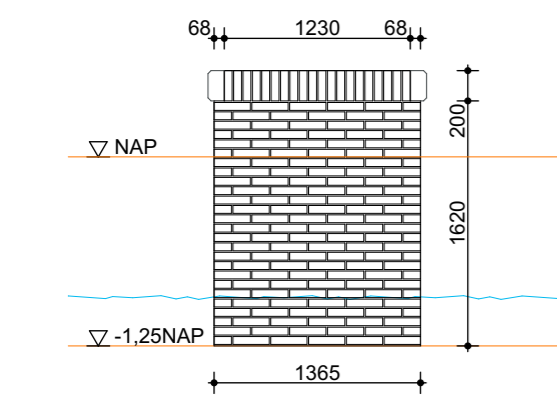




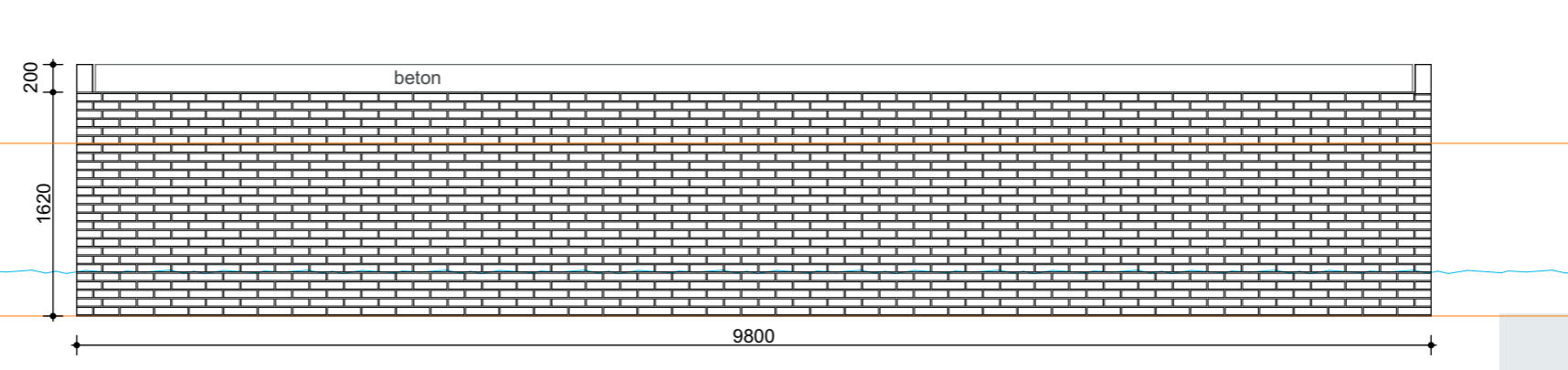
1365 mm:
 1e laag: kop (115 mm) + 5 stenen
 2e laag: 5 stenen + kop (115 mm)
 steen 240x115x52 mm
 lintvoeg 9,9 mm; lagenmaat 61,9 mm



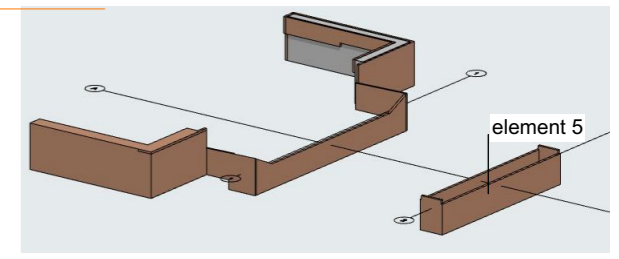
9800 mm:
 1e laag: kop (115 mm) + driekleזור (180 mm) + 38 stenen
 2e laag: driekleזור (180 mm) + 38 stenen + kop (115 mm)
 steen 240x115x52 mm
 lintvoeg 9,9 mm; lagenmaat 61,9 mm

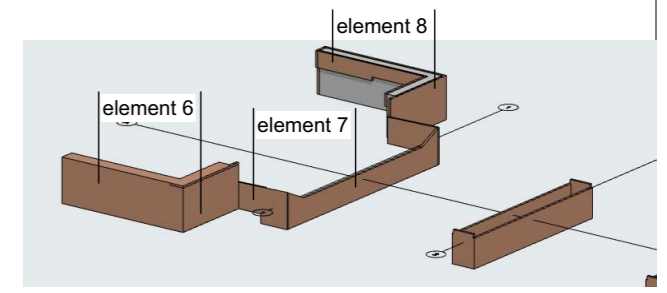
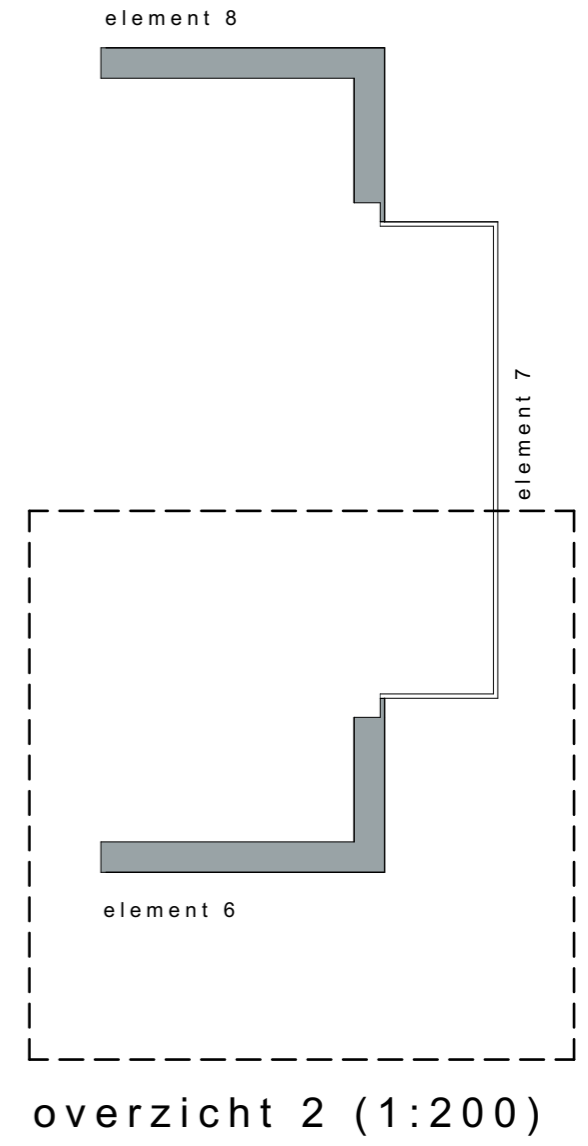
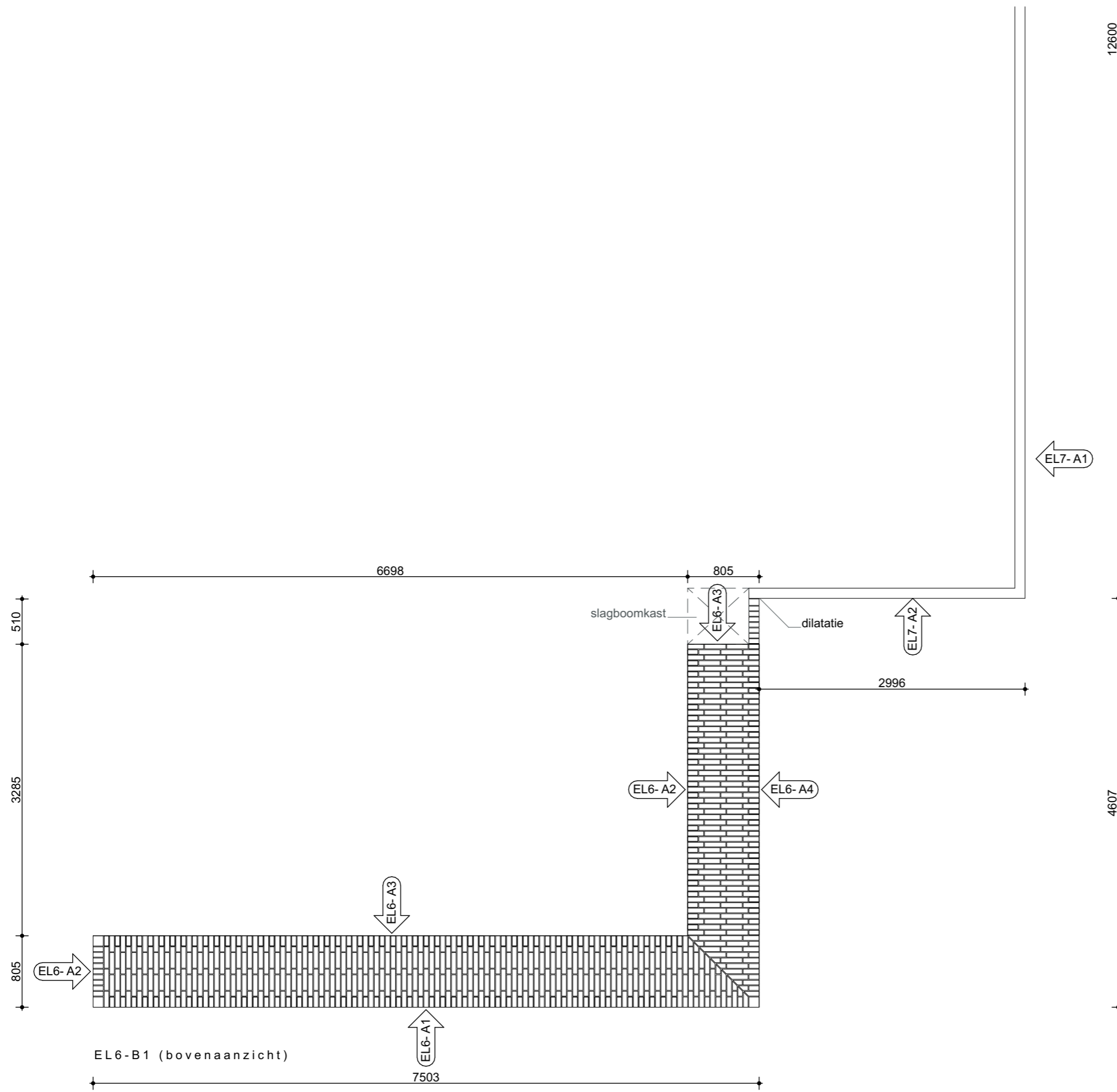


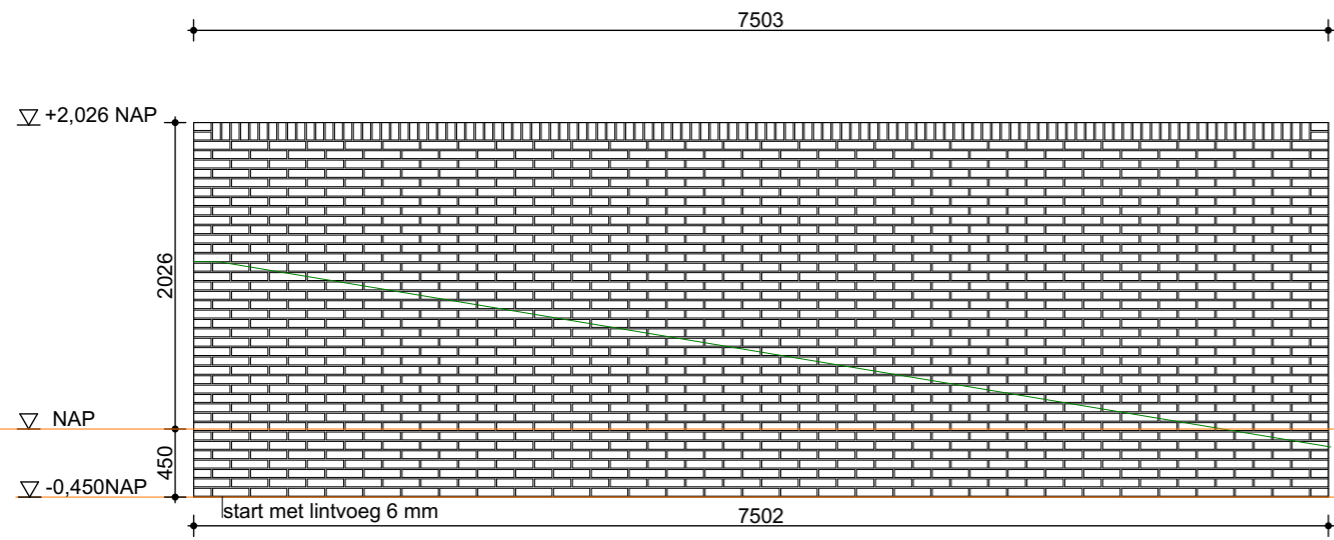
1365 mm:
 1e laag: kop (115 mm) + 5 stenen
 2e laag: 5 stenen + kop (115 mm)
 steen 240x115x52 mm
 lintvoeg 9,9 mm; lagenmaat 61,9 mm



9800 mm:
 1e laag: kop (115 mm) + driekleזור (180 mm) + 38 stenen
 2e laag: driekleזור (180 mm) + 38 stenen + kop (115 mm)
 steen 240x115x52 mm
 lintvoeg 9,9 mm; lagenmaat 61,9 mm



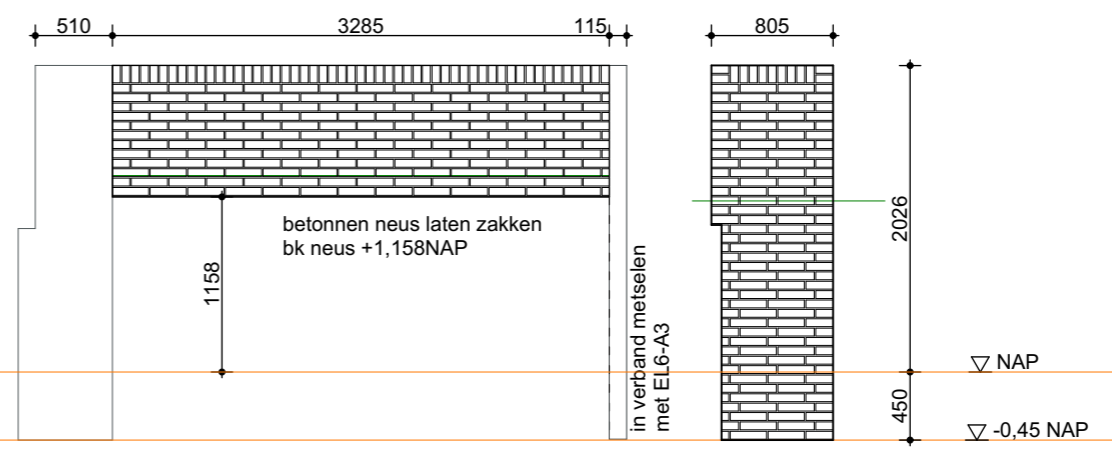




EL 6 - A 1

7502 mm:
 1e laag: kop (115 mm) + 29 stenen + kop (115 mm)
 2e laag: 30 stenen
 steen 240x115x52 mm
 lintvoeg 10 mm; lagenmaat 62 mm

zie EL7 - A2
 uitgangspunt
 start metselwerk
 voor element 6+7+8

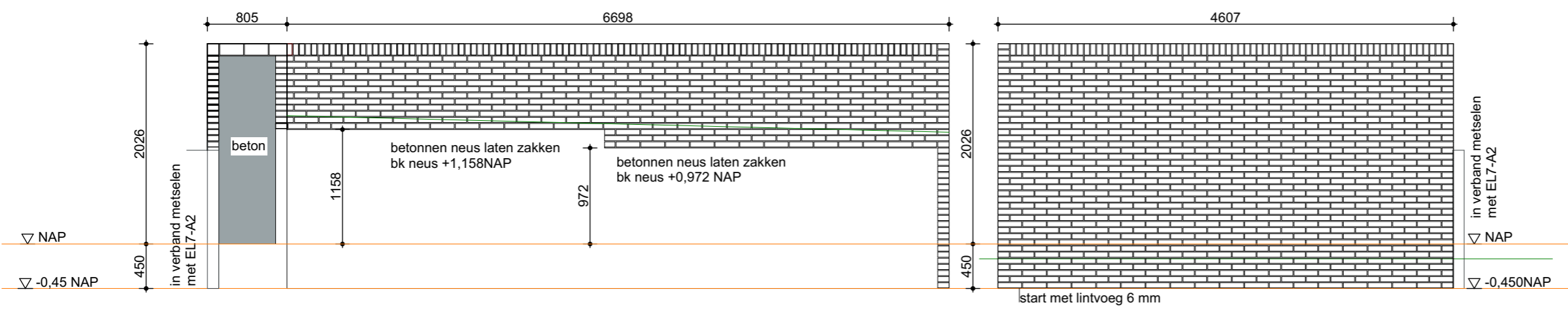


EL 6 - A 2

3285 mm:
 1e laag: 13 stenen + RESTMAAT
 2e laag: kop (115 mm) + 12 stenen + restmaat
 steen 240x115x52 mm
 lintvoeg 10 mm; lagenmaat 62 mm

EL 6 - A 2

805 mm:
 1e laag: kop (115 mm) + 2 stenen + drieklezoor (180 mm)
 2e laag: drieklezoor (180 mm) + 2 stenen + kop (115 mm)
 steen 240x115x52 mm

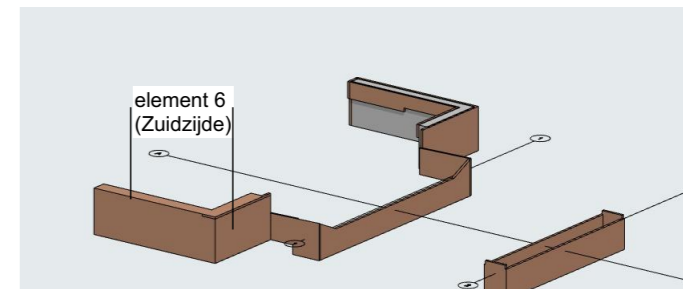


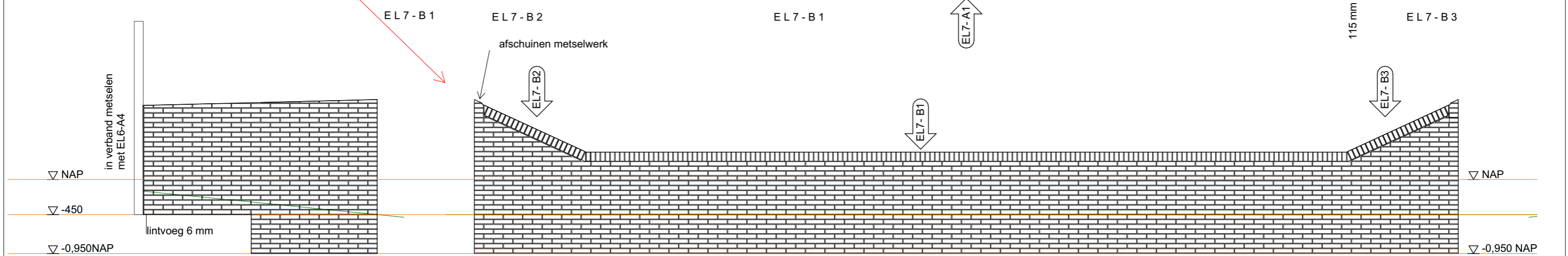
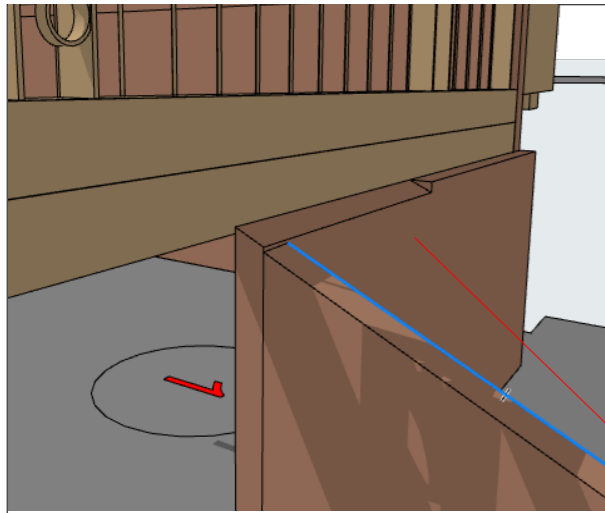
EL 6 - A 3

6698 mm:
 1e laag: restmaat + 13 stenen + kop (115 mm)
 2e laag: restmaat + 13 stenen
 steen 240x115x52 mm

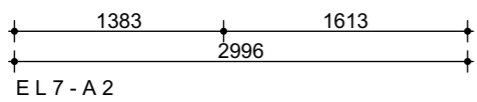
EL 6 - A 4

4607 mm:
 1e laag: 18 stenen + kop (115 mm)
 2e laag: kop (115 mm) + 18 stenen
 steen 240x115x52 mm

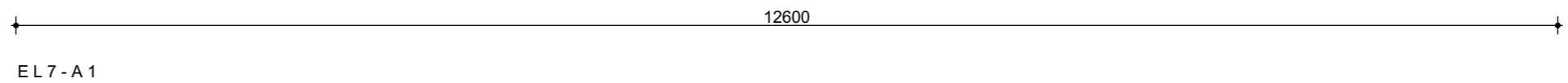




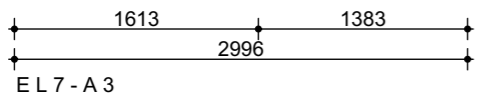
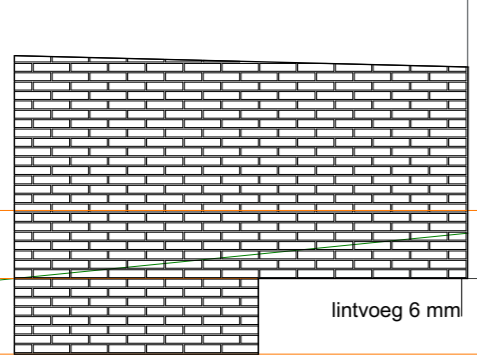
uitgangspunt start lagenmaat voor element 6+7+8



EL 7 - A 2
 2996 mm:
 1e laag: 6 stenen + kop (115 mm)
 2e laag: kop (115 mm) + 6 stenen
 steen 240x115x52 mm
 lintvoeg 10 mm; lagenmaat 62 mm

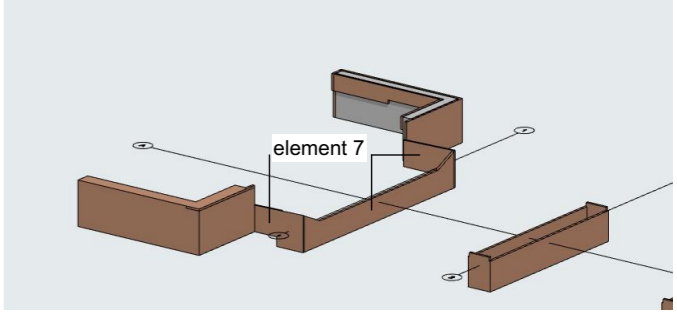


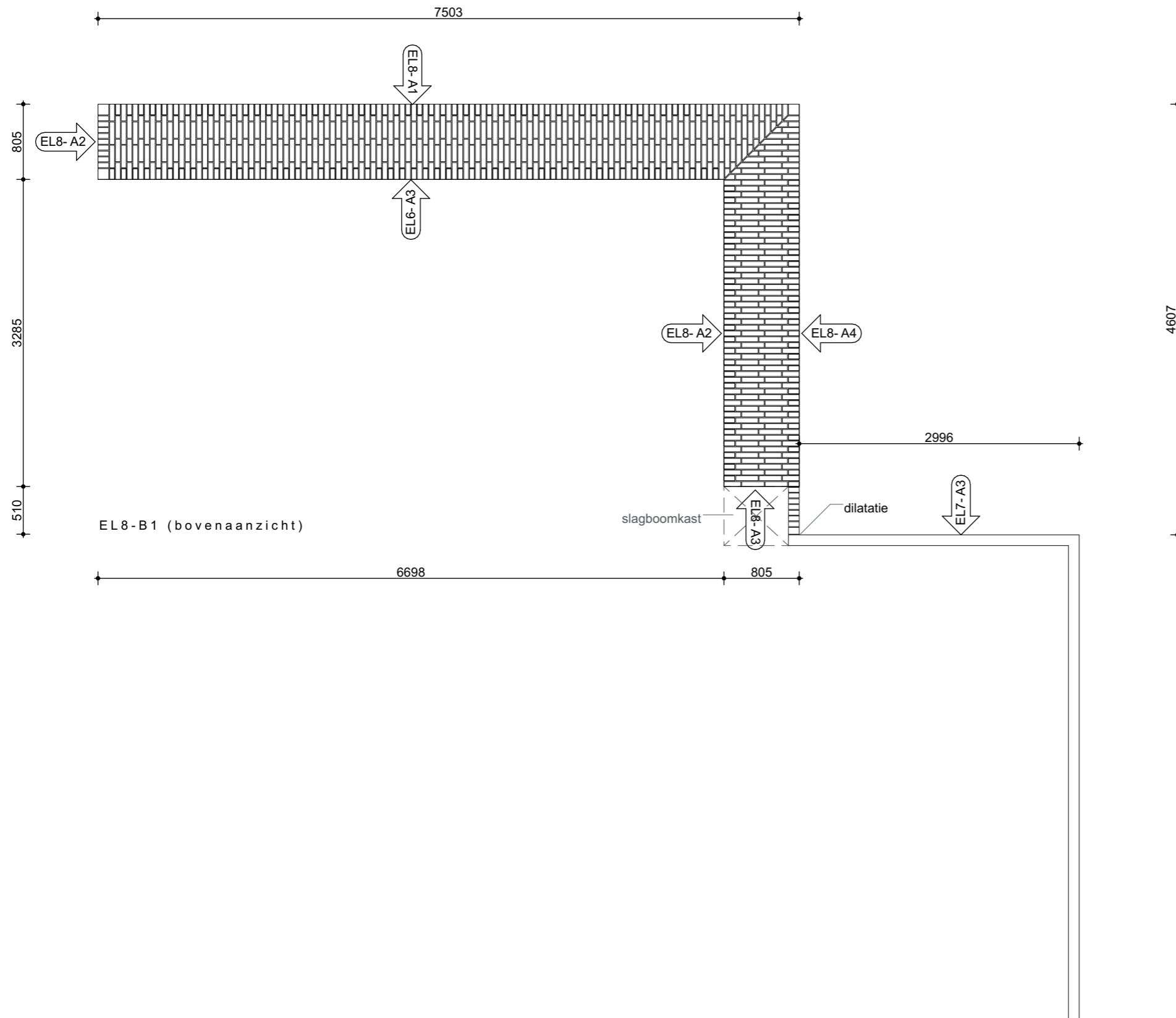
EL 7 - A 1
 12600 mm:
 1e laag: 50 stenen + kop (115 mm)
 2e laag: kop (115 mm) + 50 stenen
 steen 240x115x52 mm
 lintvoeg 10 mm; lagenmaat 62 mm



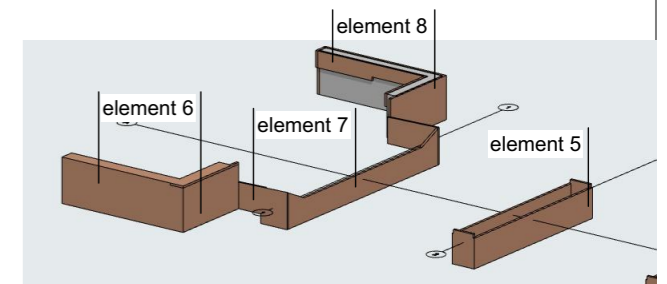
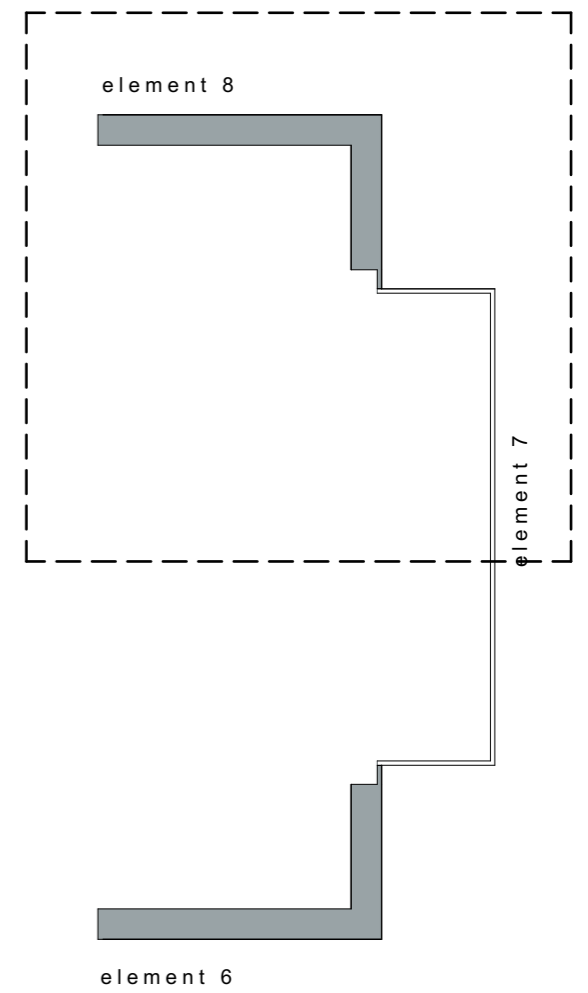
EL 7 - A 3
 2996 mm:
 1e laag: kop (115 mm) + 6 stenen
 2e laag: 6 stenen + kop (115 mm) steen 240x115x52 mm
 lintvoeg 10 mm; lagenmaat 62 mm

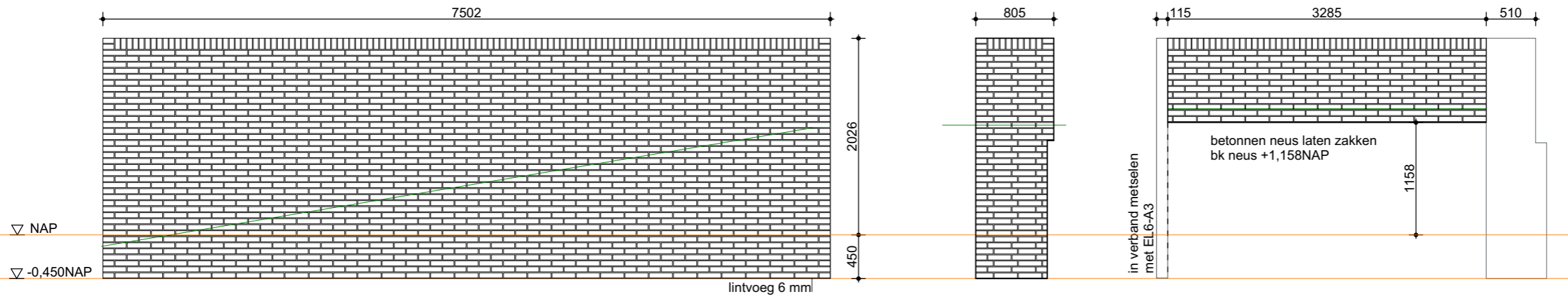
uitgangspunt start lagenmaat voor element 6+7+8





overzicht 3 (1:200)



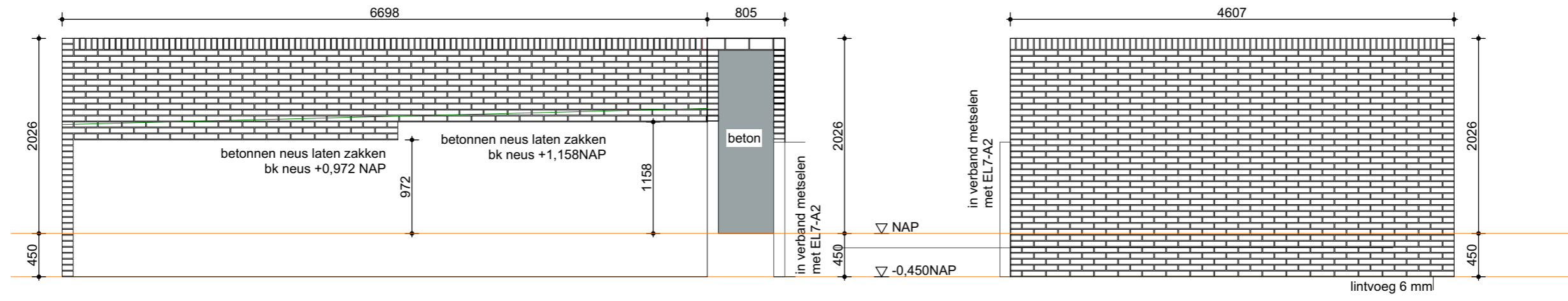


zie EL7 - A2
 uitgangspunt
 start metselwerk
 voor element 6+7+8

EL 8 - A 1
 7502 mm:
 1e laag: kop (115 mm) + 29 stenen + kop (115 mm)
 2e laag: 30 stenen
 steen 240x115x52 mm
 lintvoeg 10 mm; lagenmaat 62 mm

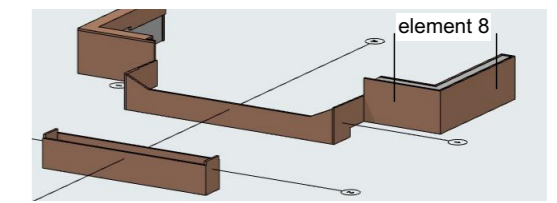
EL 8 - A 2
 805 mm:
 1e laag:
 driekleזור (180 mm) + 2 stenen
 + kop (115 mm)
 2e laag:
 kop (115 mm) + 2 stenen
 + driekleזור (180 mm)
 steen 240x115x52 mm

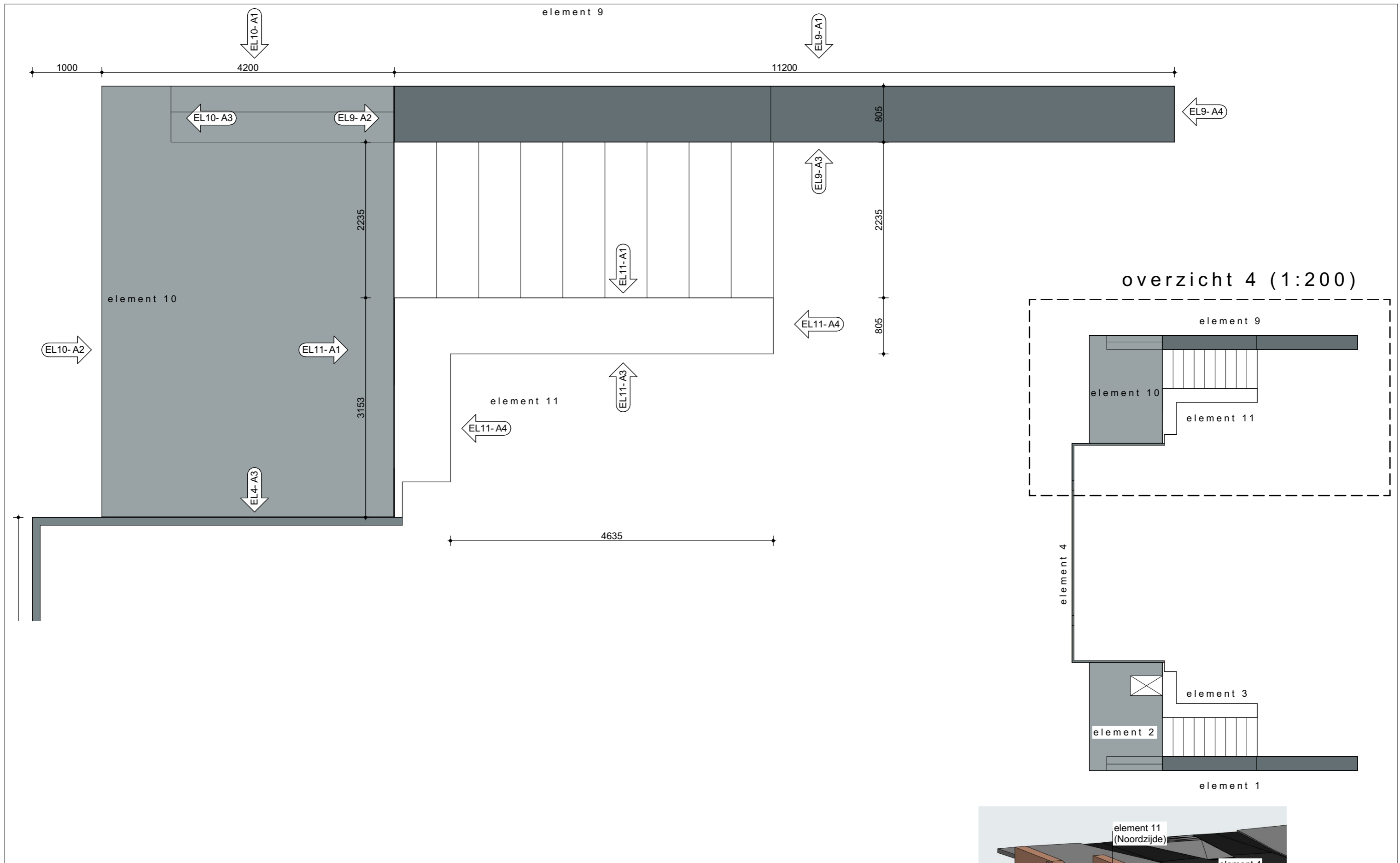
EL 8 - A 2
 3285 mm:
 1e laag: restmaat +13 stenen
 2e laag: restmaat+12 stenen +kop (115 mm)
 steen 240x115x52 mm
 lintvoeg 10 mm; lagenmaat 62 mm



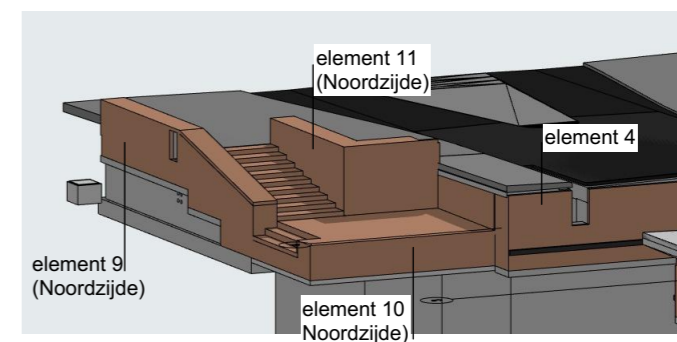
EL 8 - A 3
 6698 mm:
 1e laag: kop (115 mm) + 13 stenen + restmaat
 2e laag: 13 stenen + restmaat
 steen 240x115x52 mm

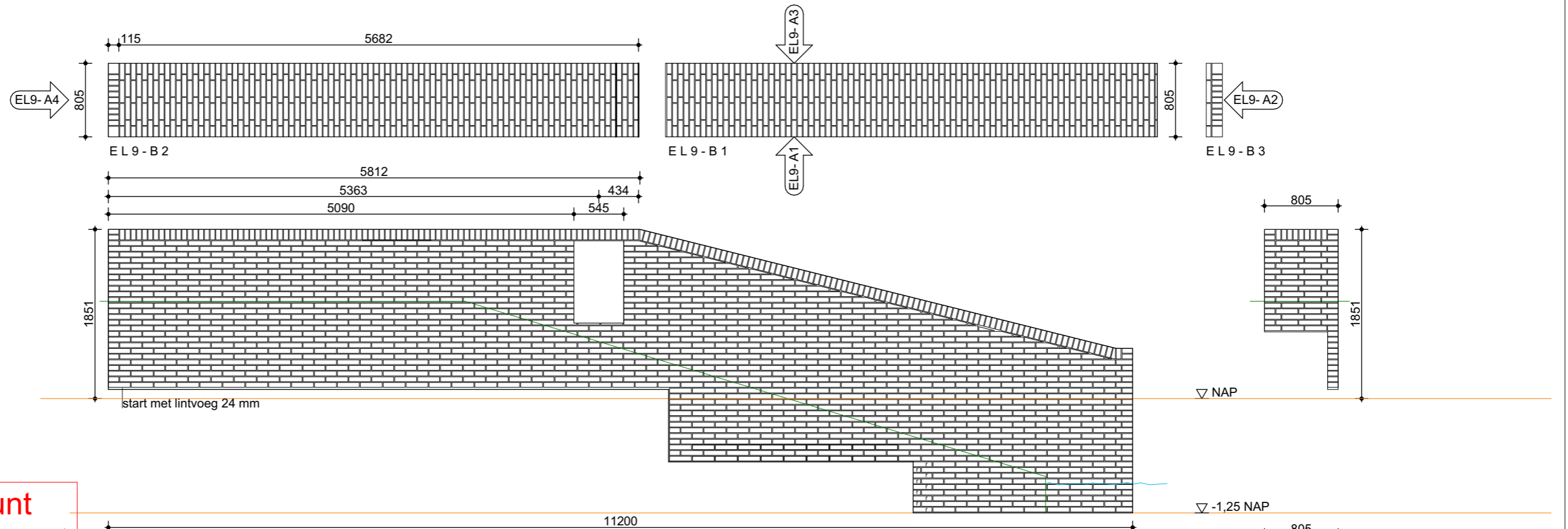
EL 8 - A 4
 4607 mm:
 1e laag: kop (115 mm) + 18 stenen
 2e laag: 18 stenen +kop (115 mm)
 steen 240x115x52 mm





overzicht 4

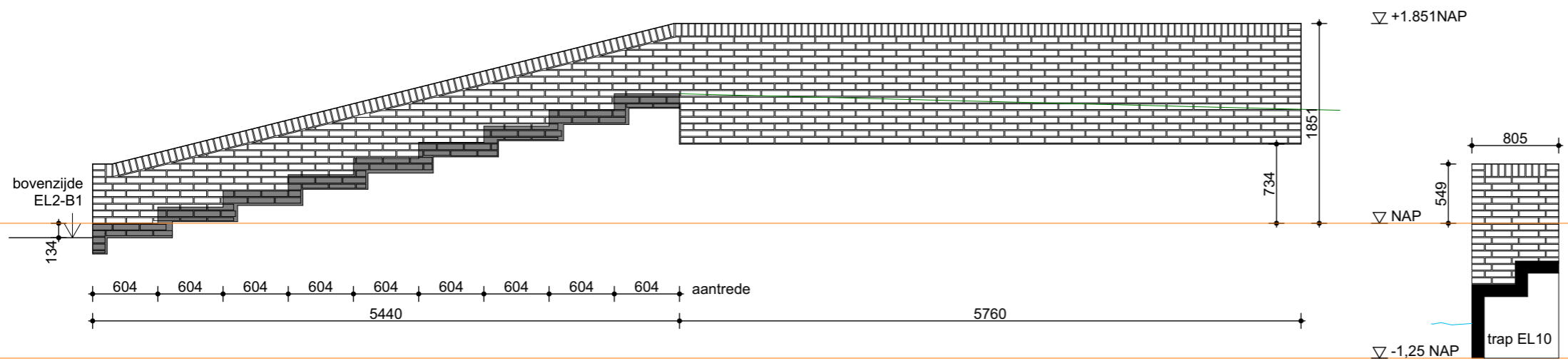




uitgangspunt
start lagenmaat

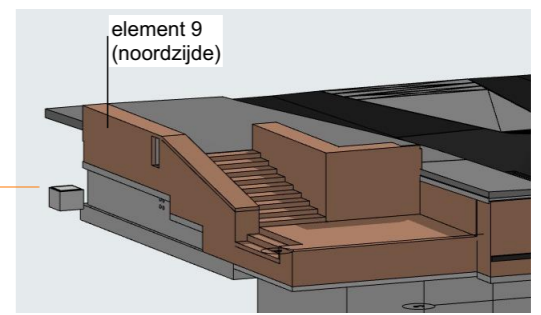
EL 9 - A 1
11200 mm:
1e laag: kop (115 mm) + drieklezoor (180 mm) 43 stenen + kop (115 mm)
2e laag: kop (115 mm) + drieklezoor (180 mm) + 45 stenen
steen 240x115x52 mm
lintvoeg 10 mm; lagenmaat 62 mm

EL 9 - A 4
805 mm:
1e laag:
kop (115 mm) + 2 stenen + drieklezoor (180 mm)
2e laag:
drieklezoor (180 mm) + 2 stenen + kop (115 mm)

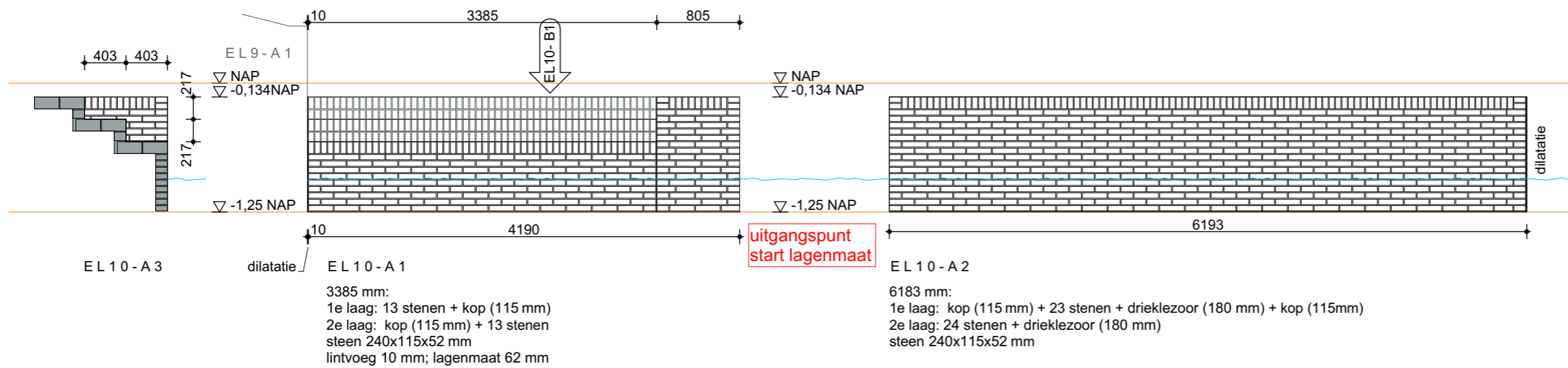
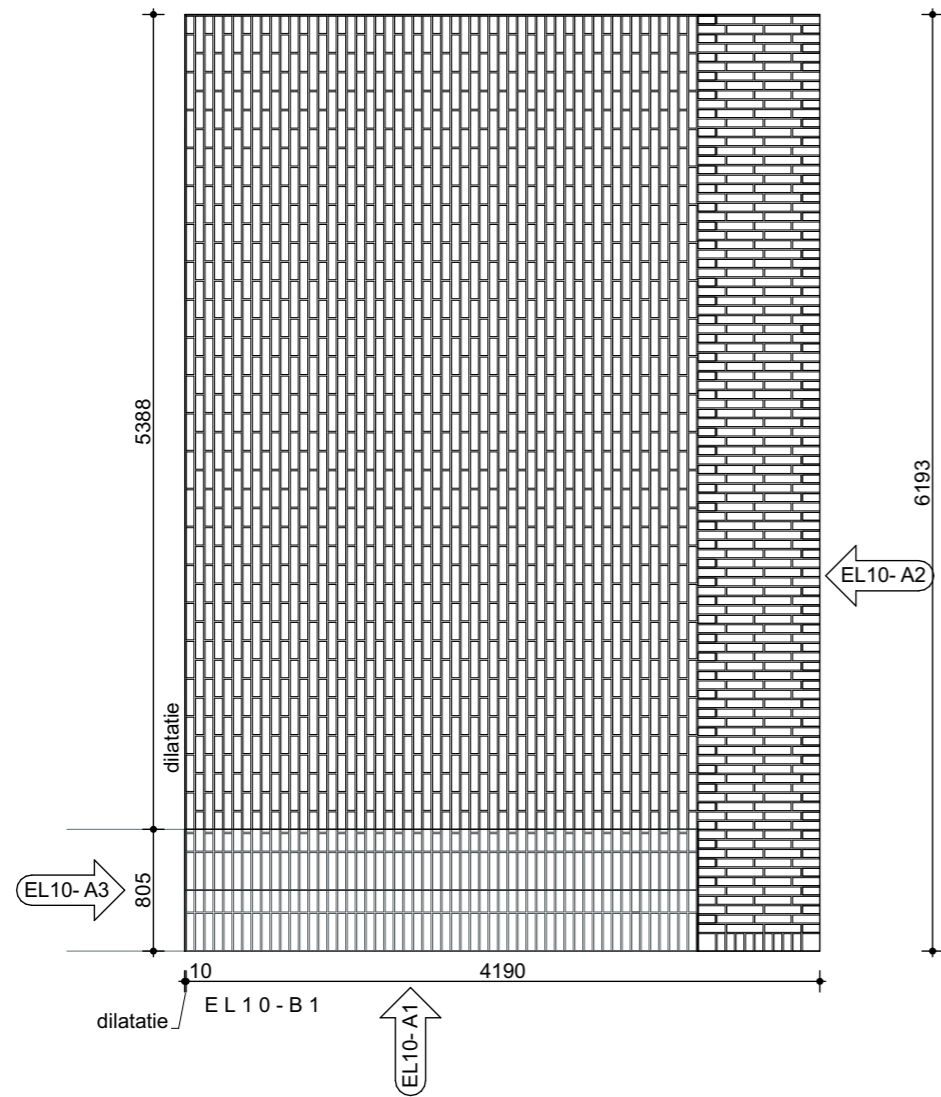


EL 9 - A 3
5760 mm:
1e laag: kop (115mm) + 22 stenen + kop (115 mm)
2e laag: 23 stenen

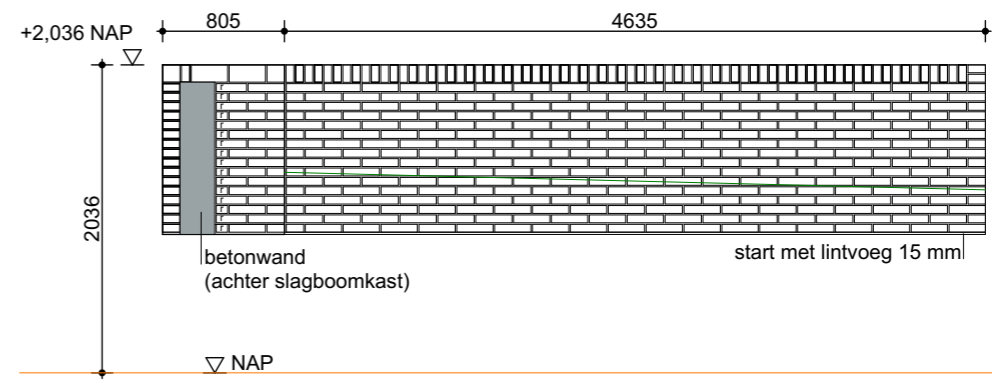
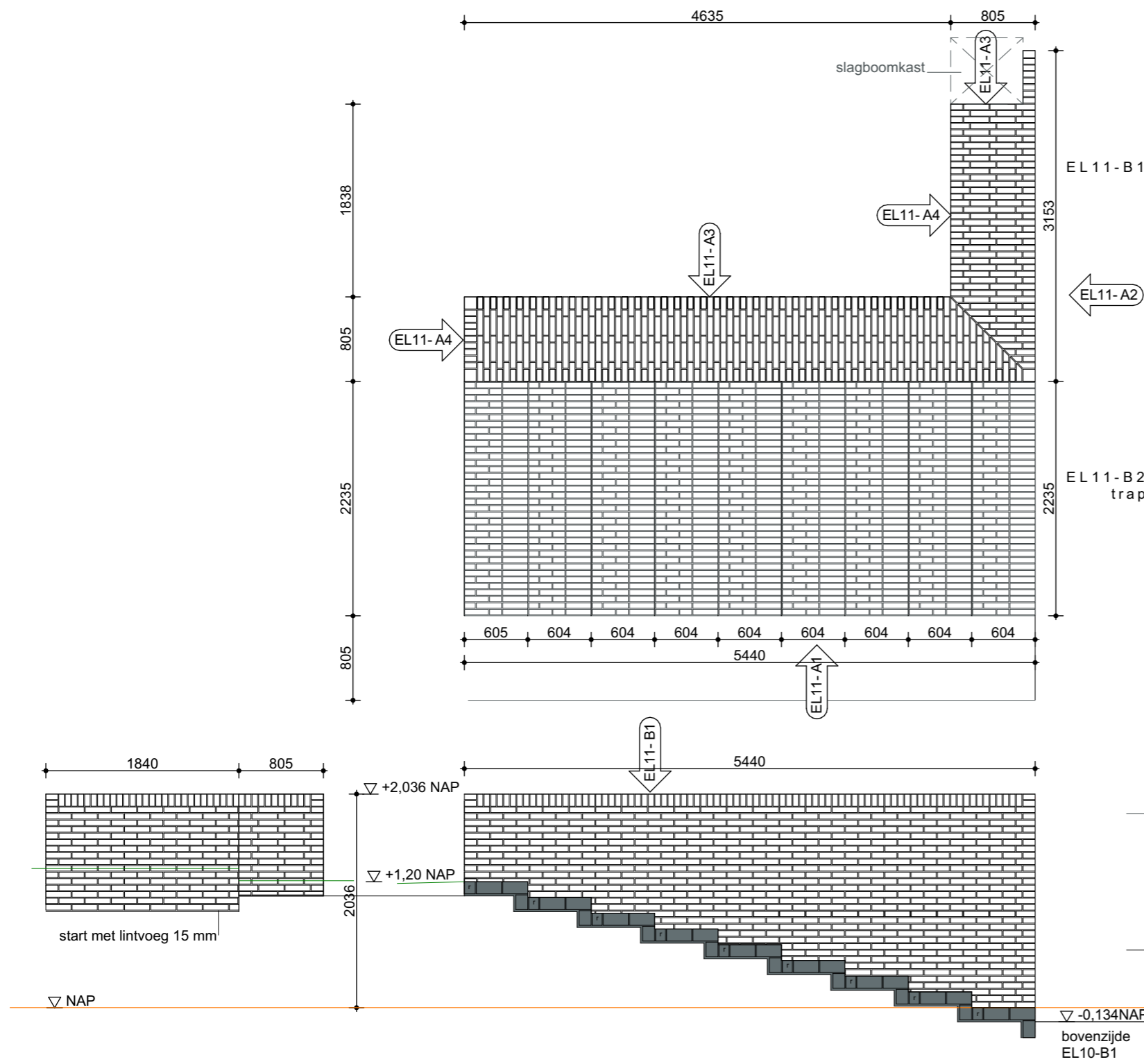
EL 9 - A 2



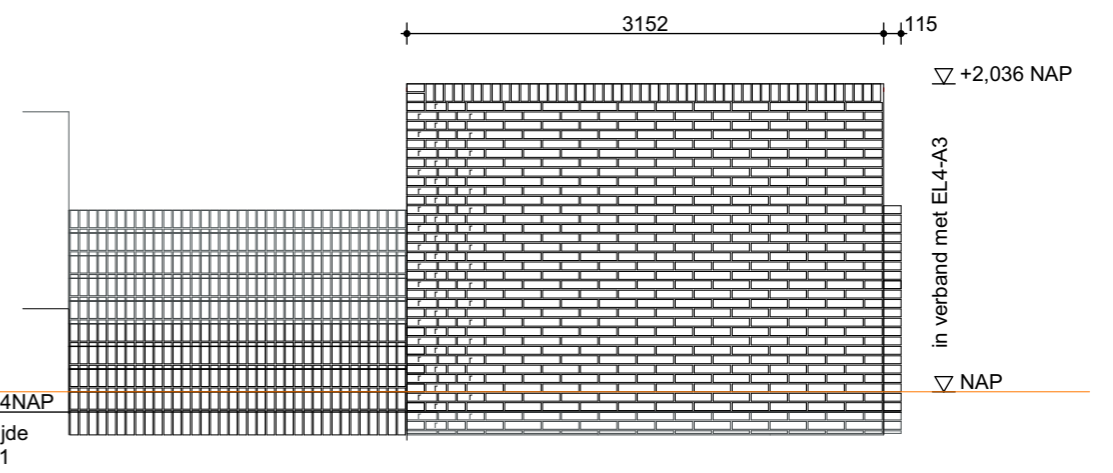
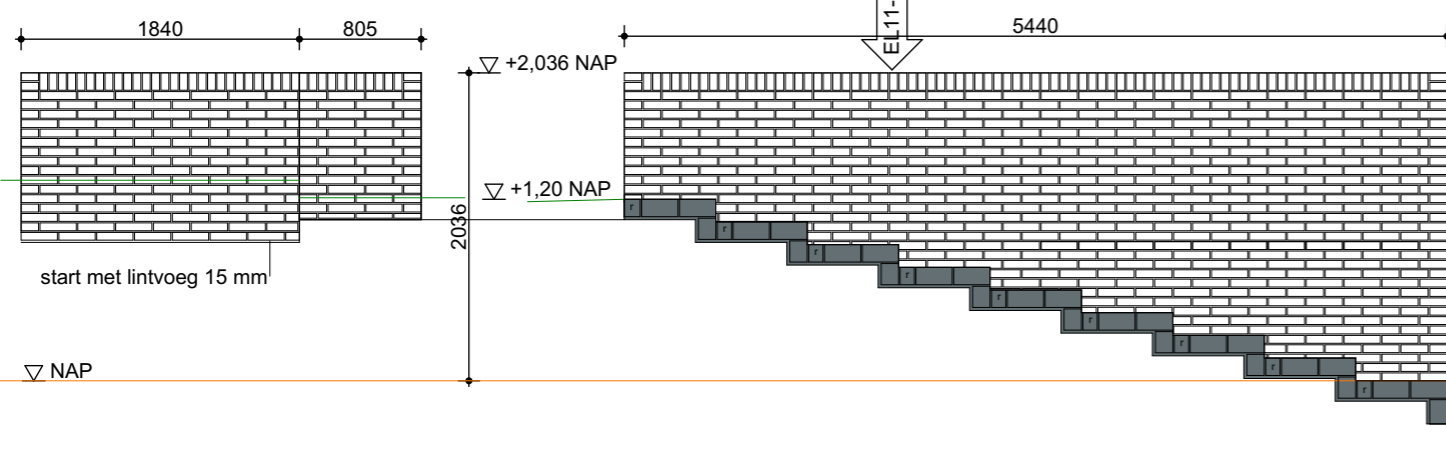
element 9



element 10



EL 11 - A 3
 4635 mm:
 1e laag: kop (115 mm) + 18 stenen
 2e laag: 18 stenen + kop (115 mm)
 steen 240x115x52 mm
 lintvoeg. 10 mm; lagenmaat 62 mm



EL 11 - A 4

EL 11 - A 1

EL 11 - A 2

