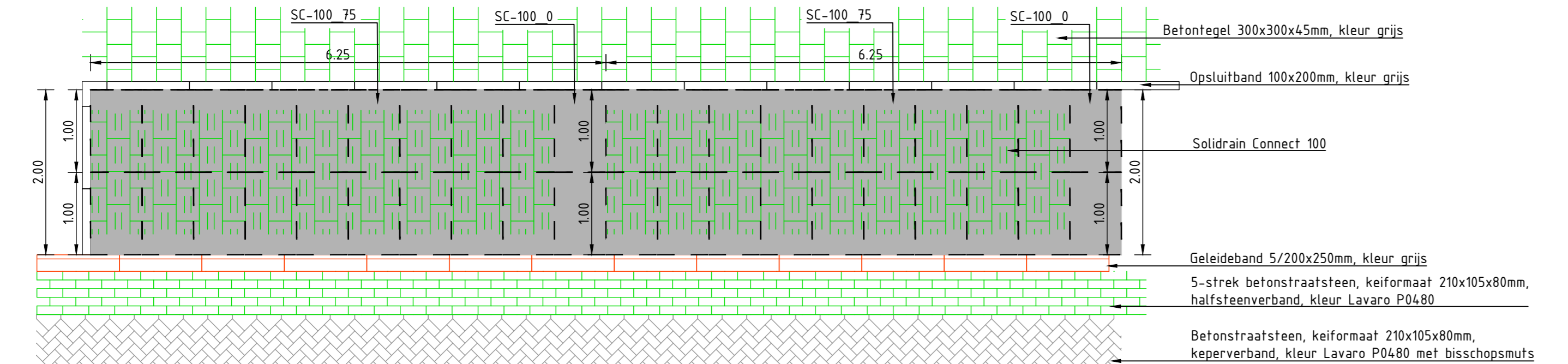
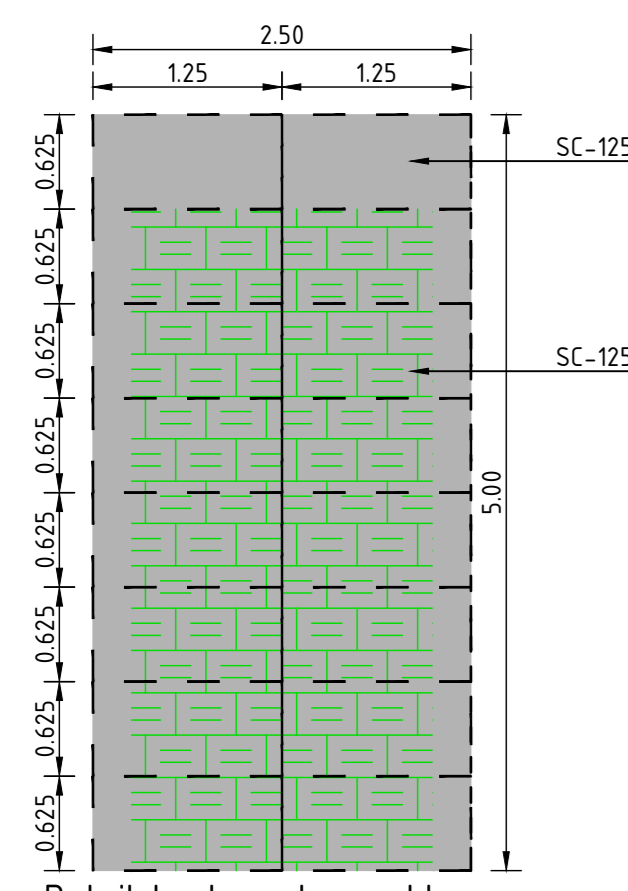


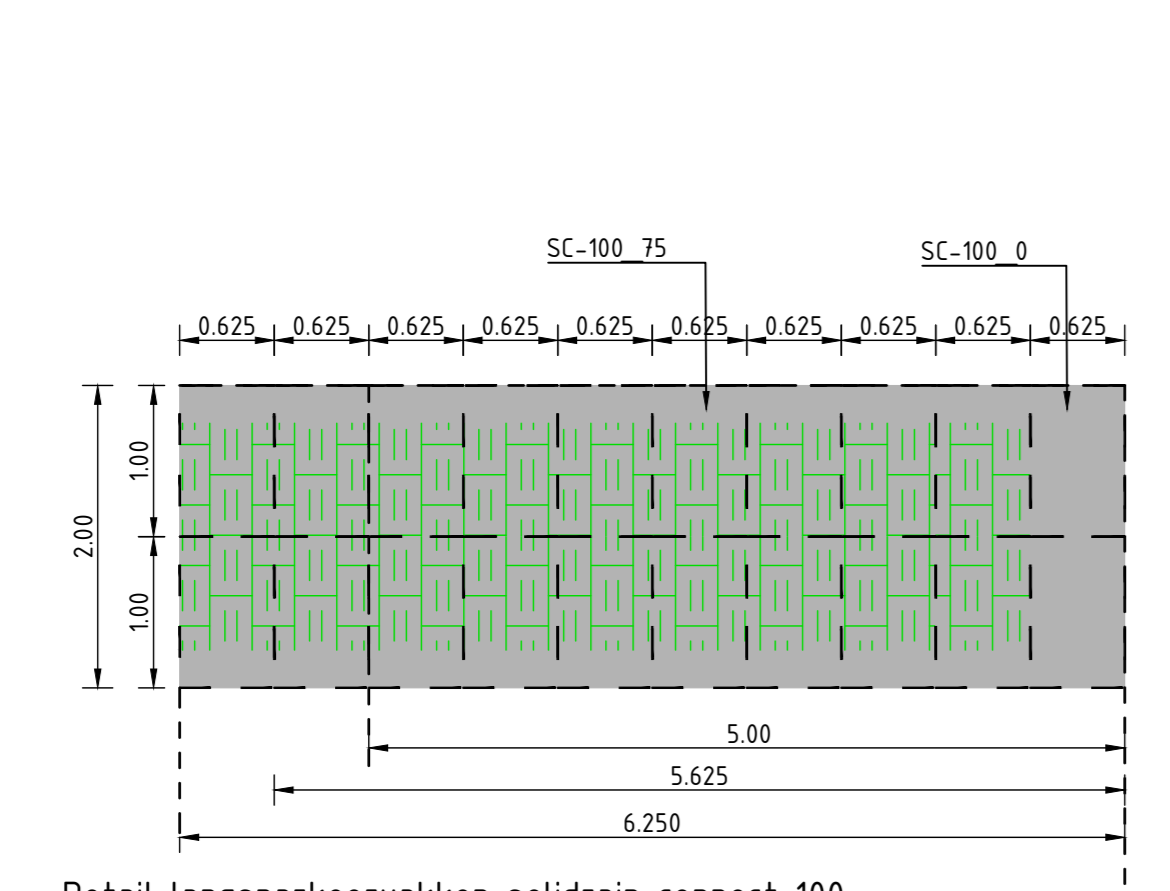
Detail haakspaarvakken solidrain connect 125
Schaal 150



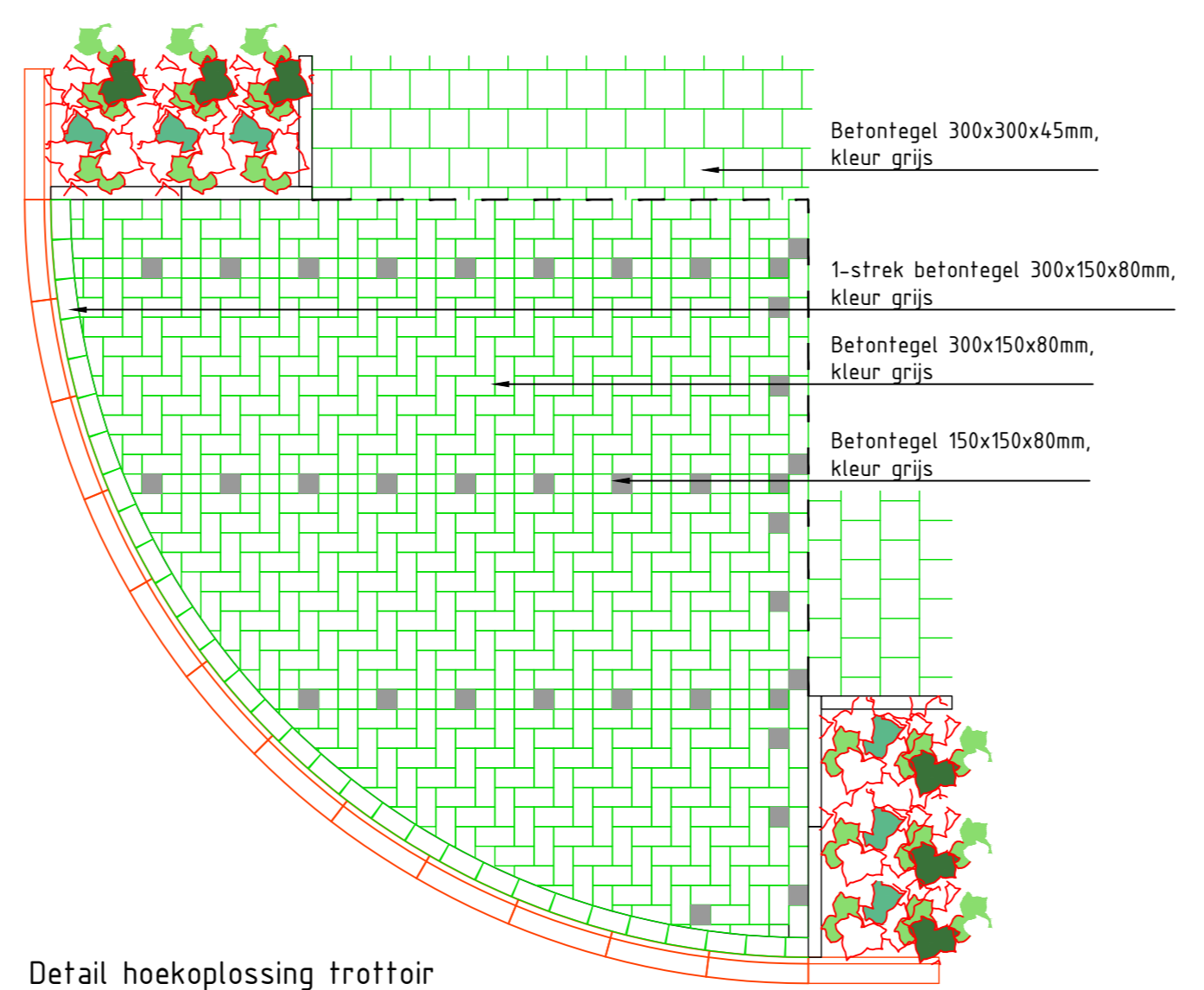
Detail langspaarvakken
Schaal 150



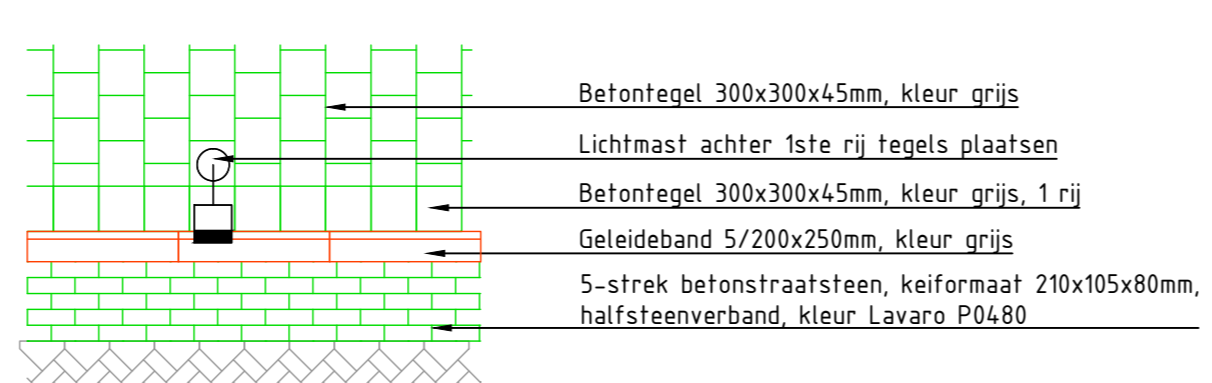
Detail haakspaarvakken
Solidrain connect 125



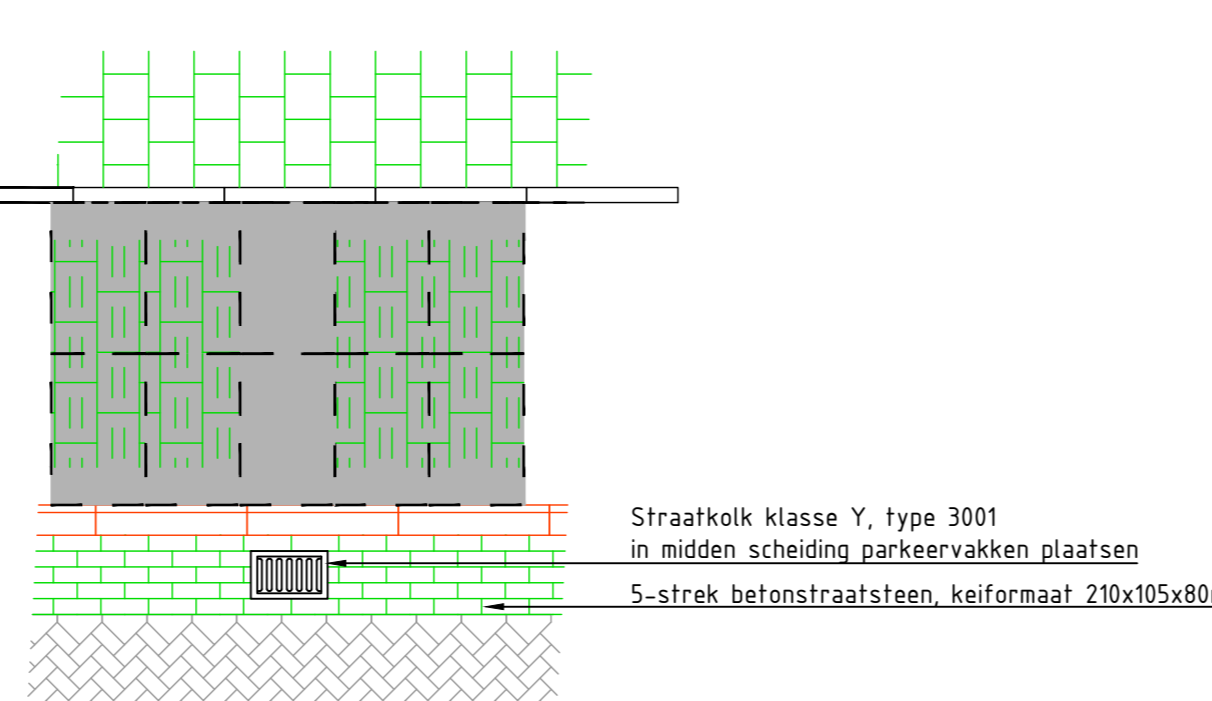
Detail langspaarvakken solidrain connect 100



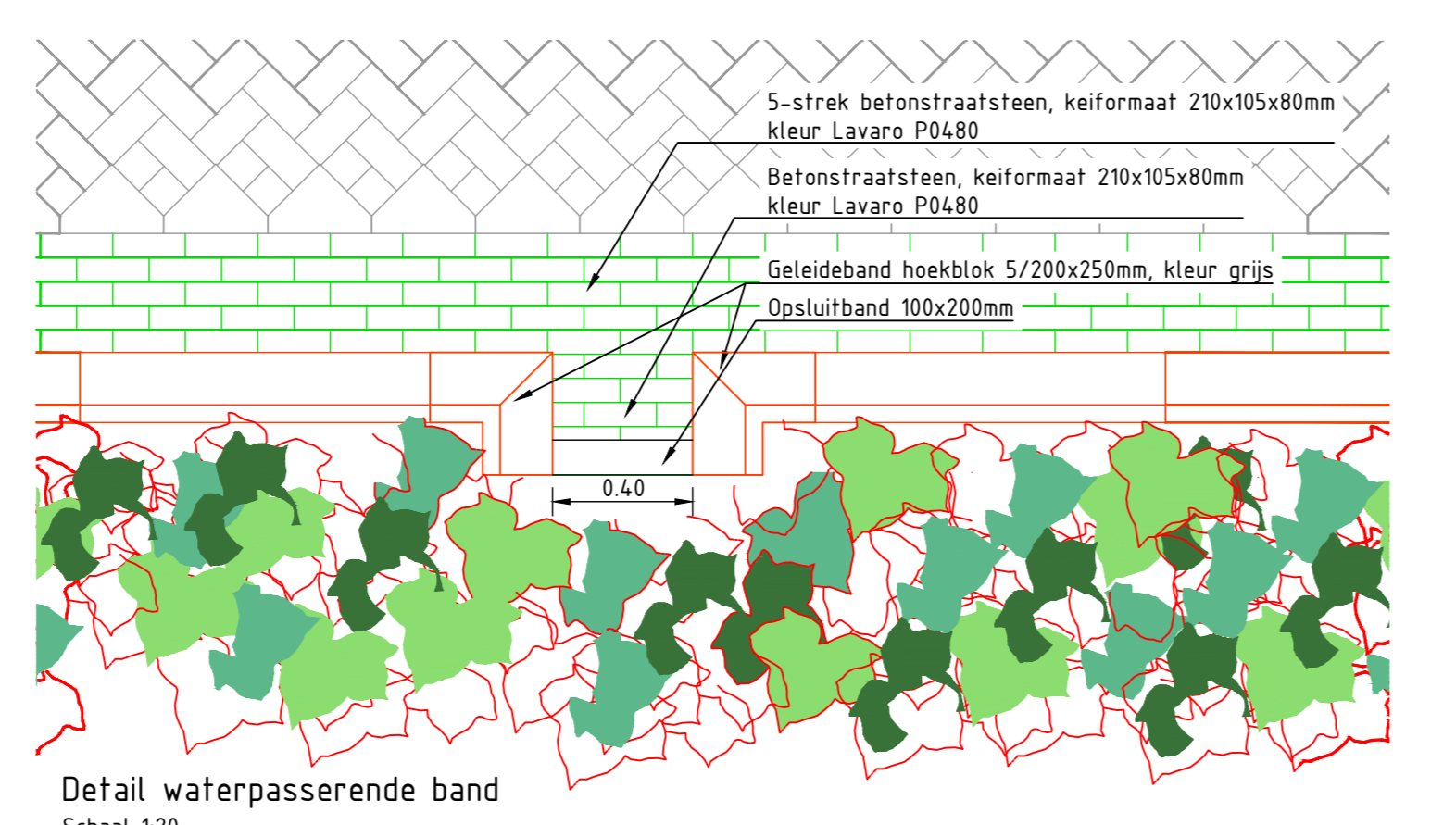
Detail hoekoplossing trottoir
Schaal 150



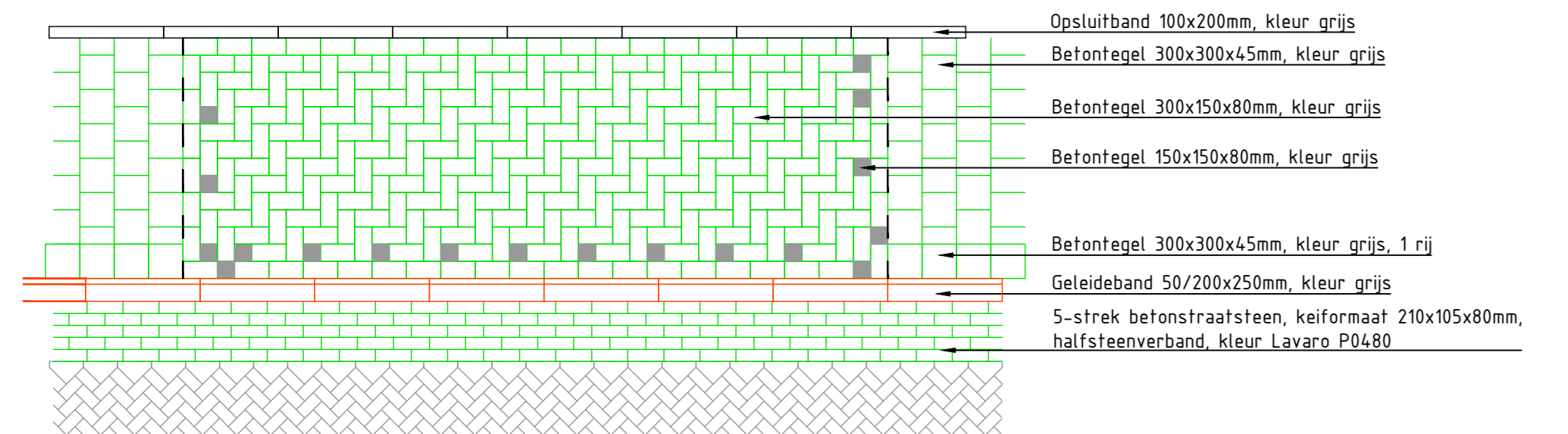
Detail locatie lichtmast
Schaal 150



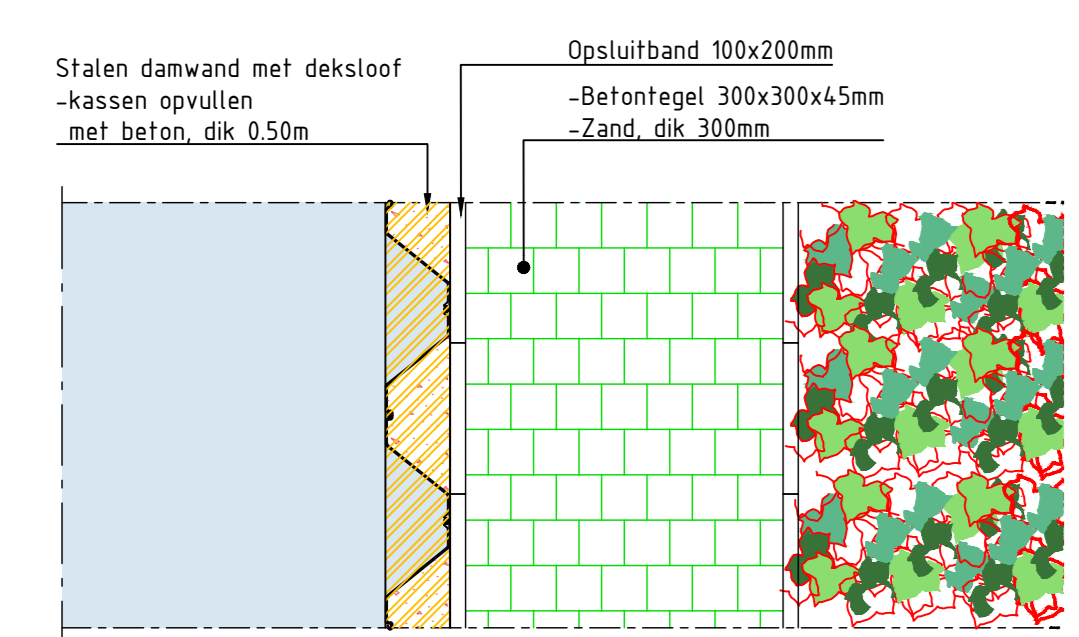
Detail kolk in molgoot
Schaal 150



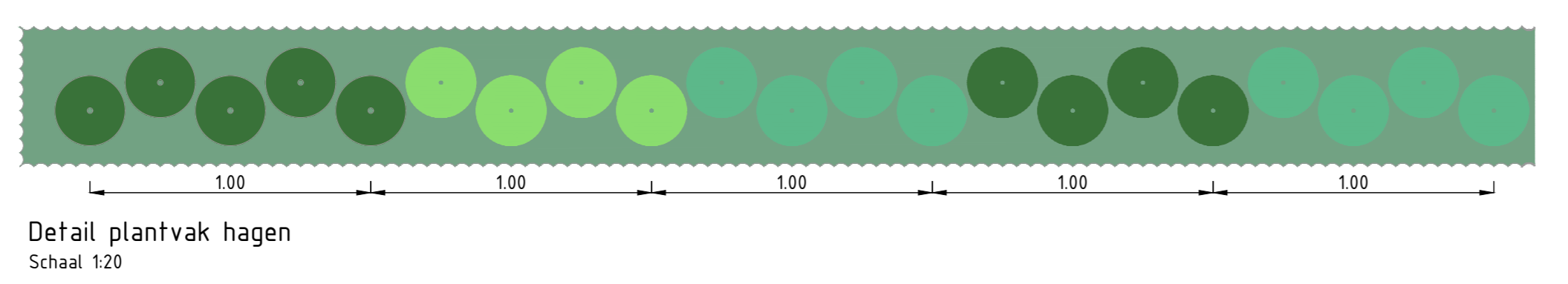
Detail waterpasserende band
Schaal 120



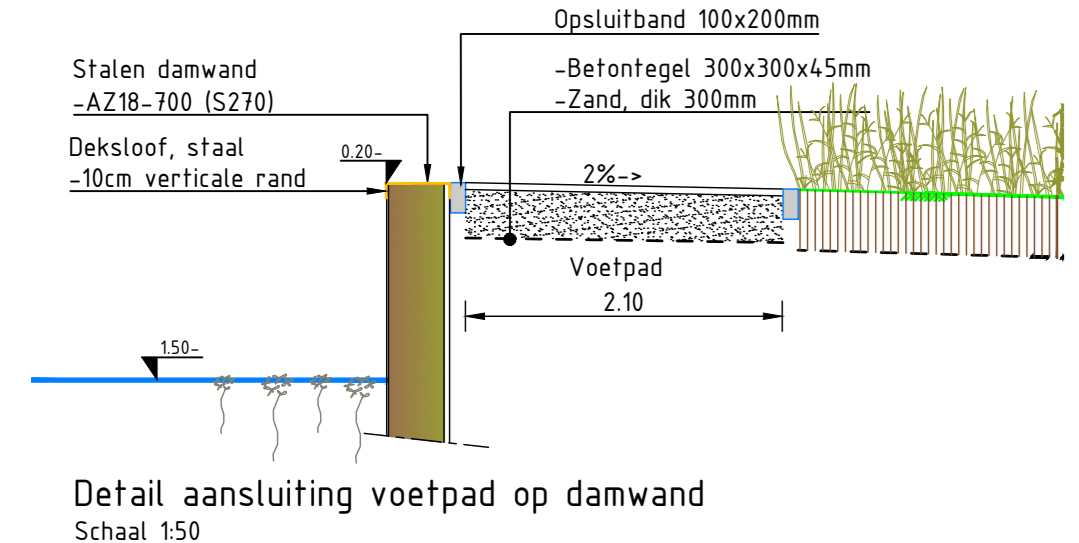
Detail inrit woningen
Schaal 150



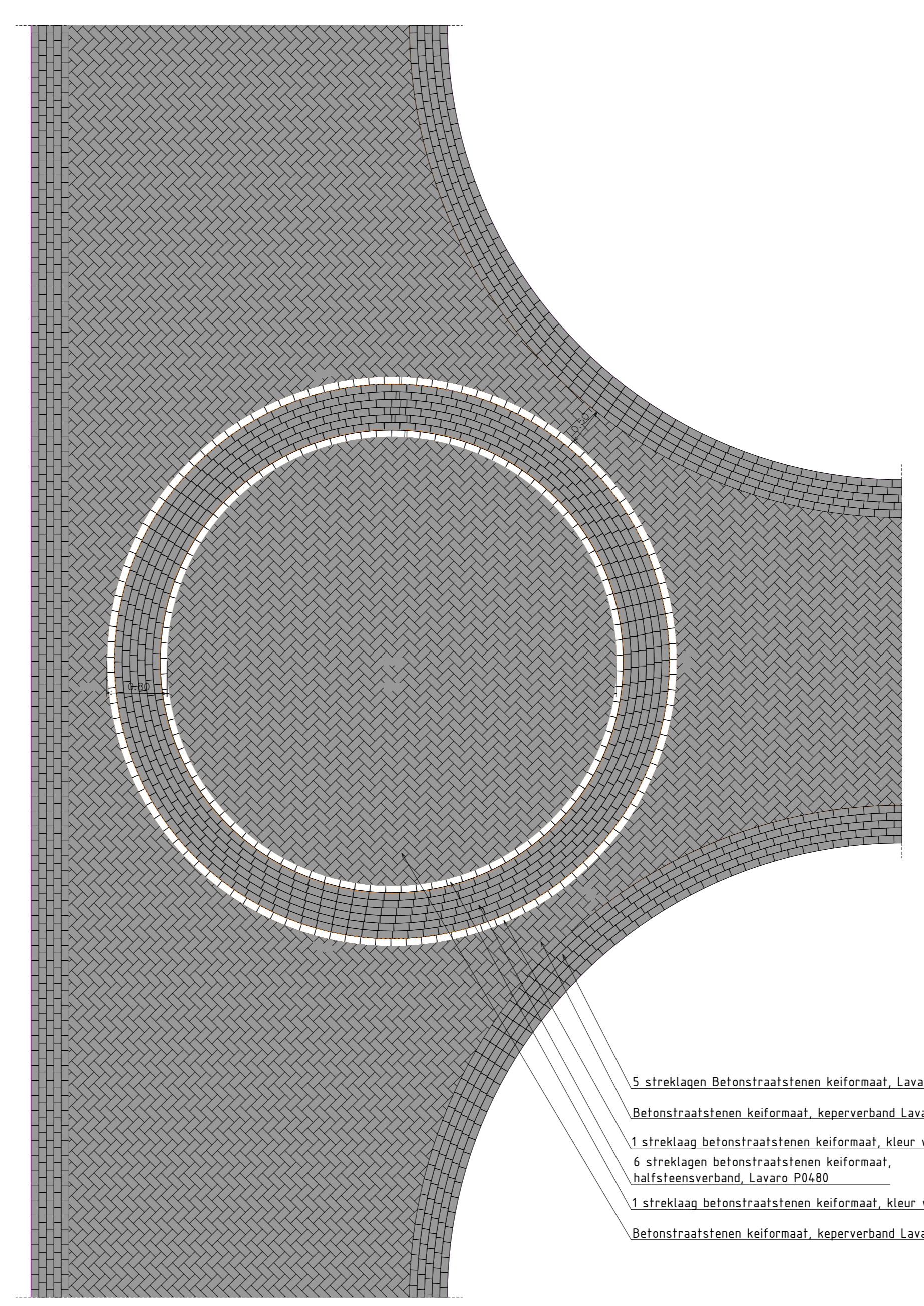
Detail aansluiting voetpad op damwand
Schaal 150



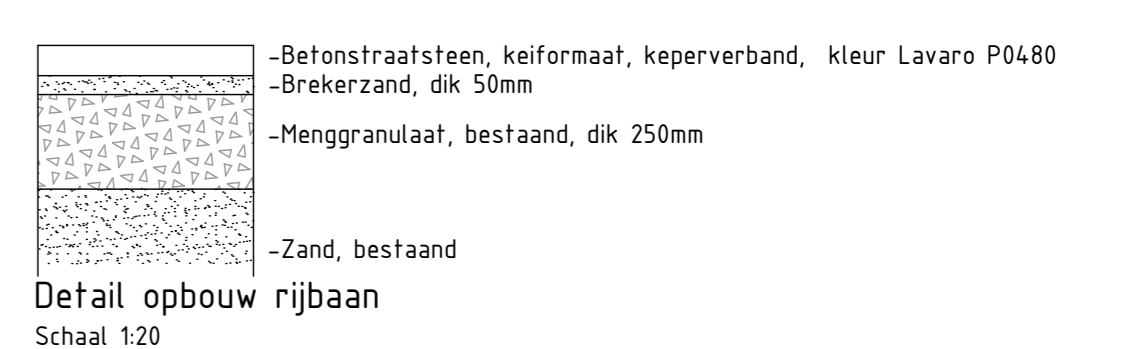
Detail plantvak hagen
Schaal 120



Detail aansluiting voetpad op damwand
Schaal 150



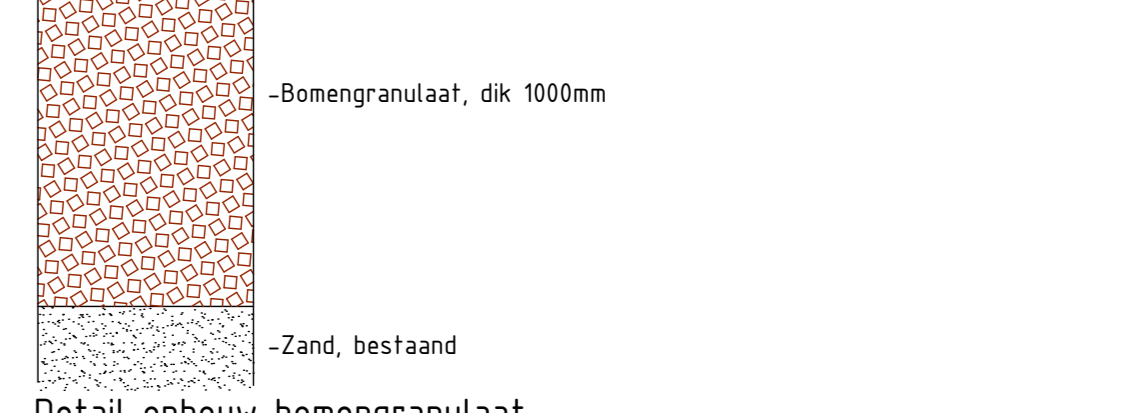
Langdoorsnede punaise hoogteverloop volgens CROW pub. 172
Detail T-splitsing punaise verkeersdrempel
Schaal 150



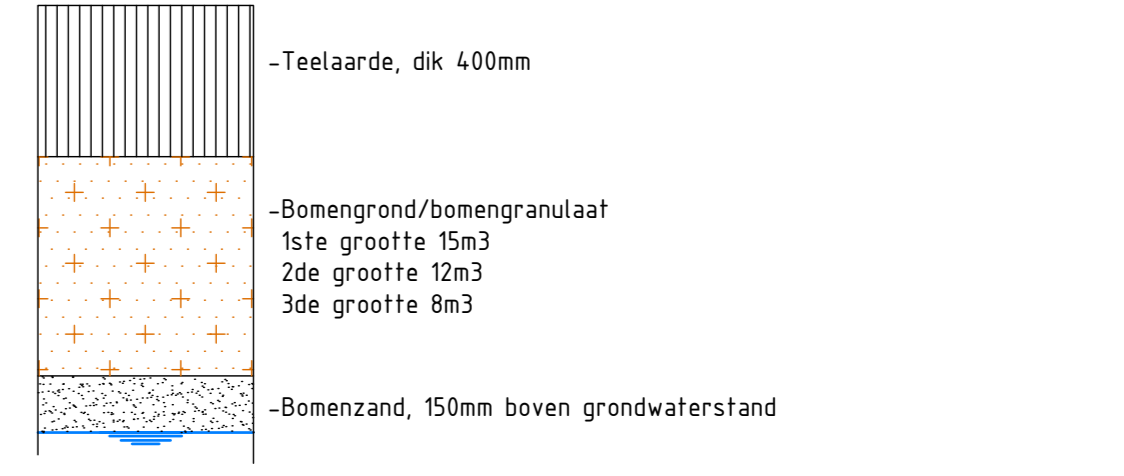
Detail opbouw rijbaan
Schaal 120



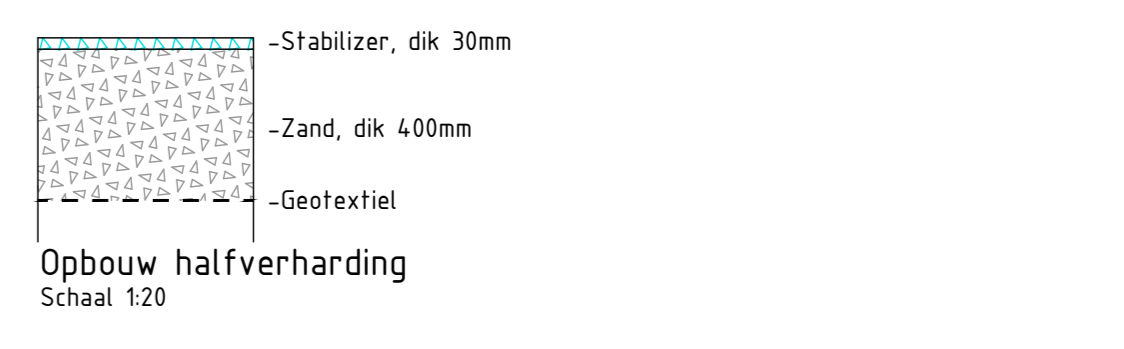
Detail opbouw parkeerplaats
Schaal 120



Detail opbouw bomgranulaat
Schaal 120



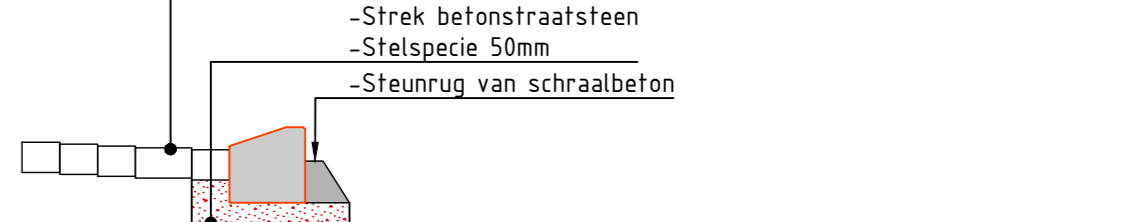
Detail opbouw boom/plantvak
Schaal 120



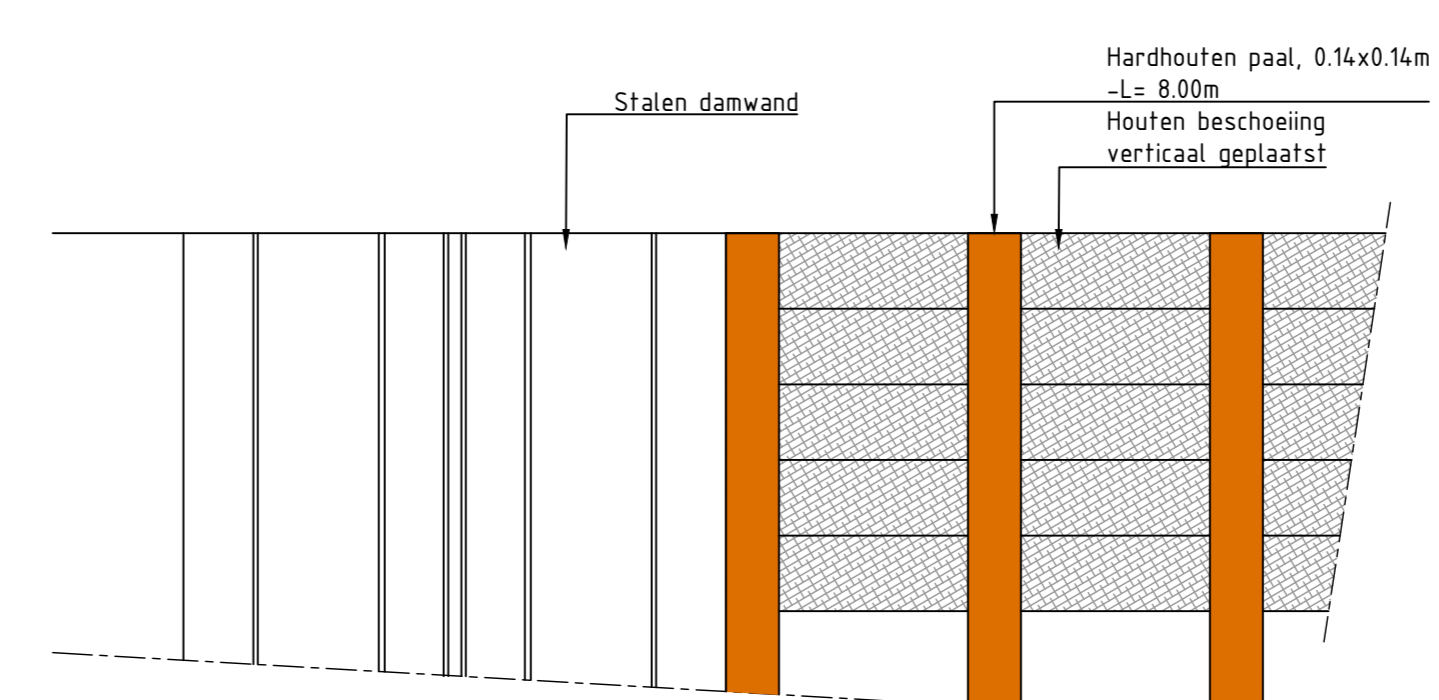
Opbouw halfverharding
Schaal 120



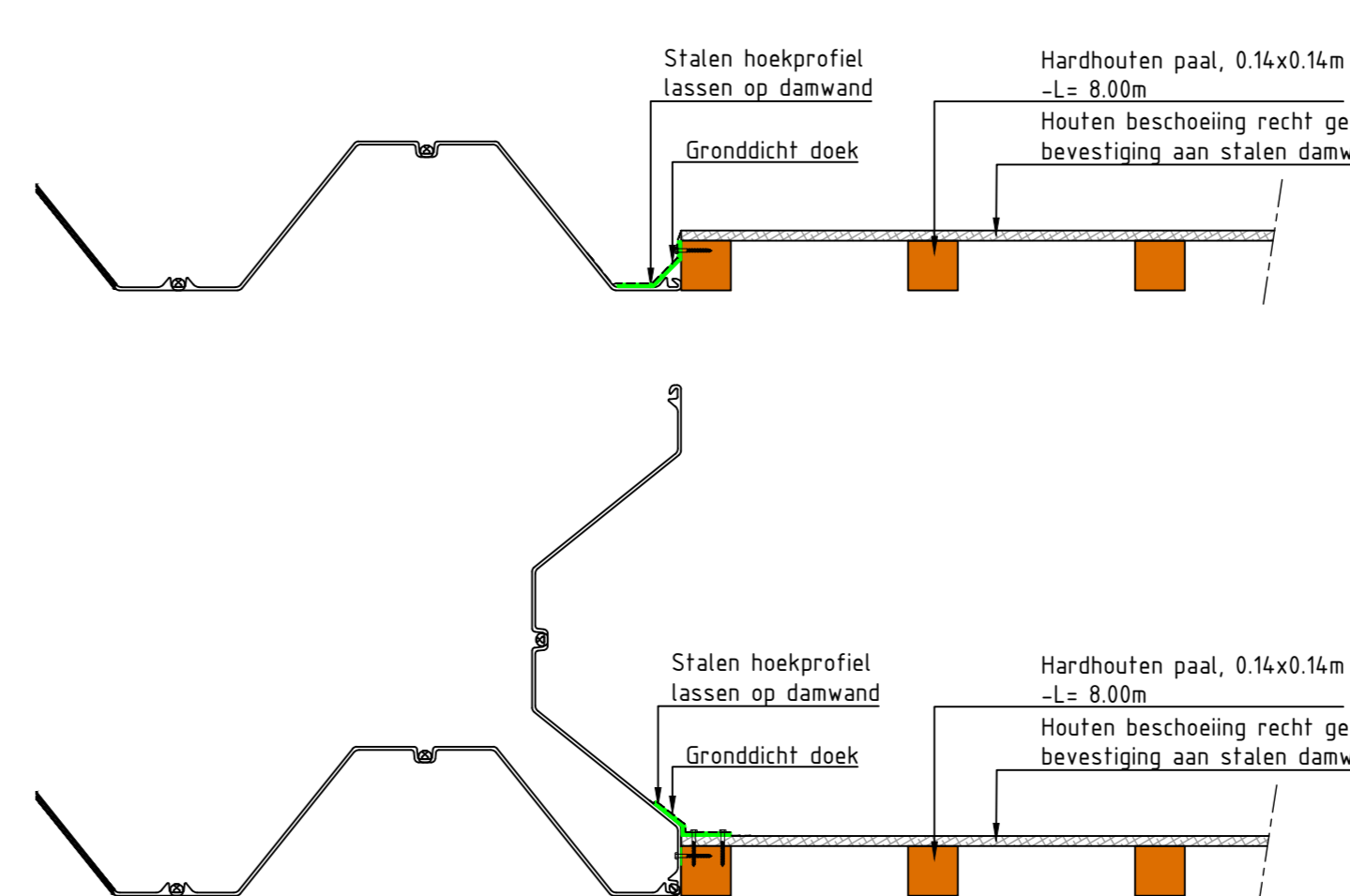
Detail goot
Schaal 120



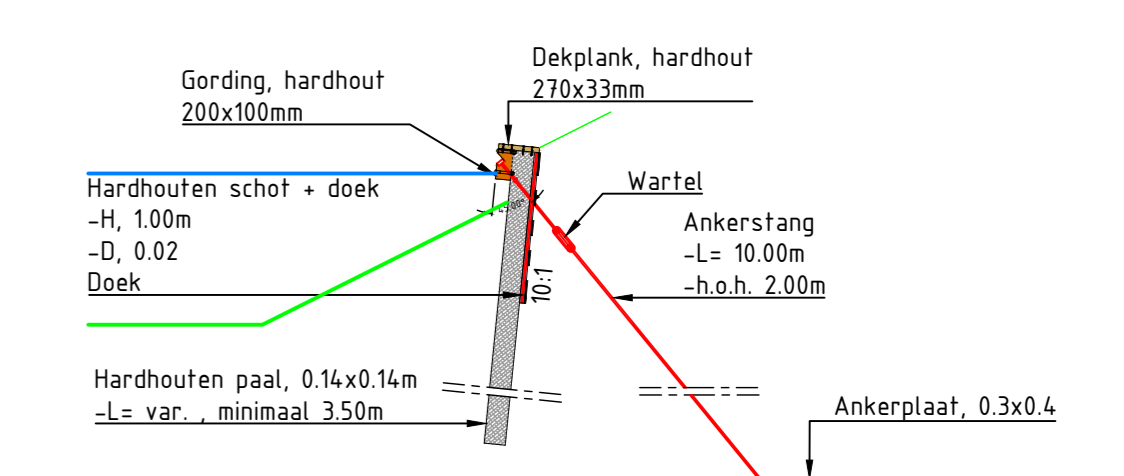
Detail geleideband
Schaal 120



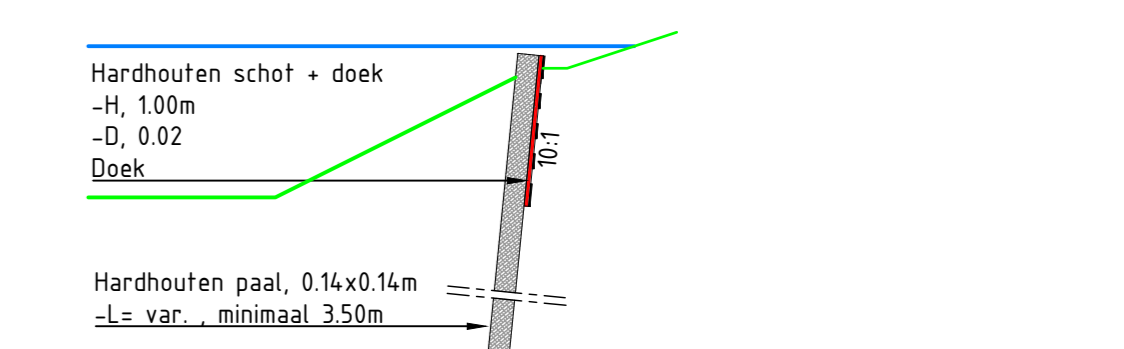
Voor aanzicht aansluiting stalen damwand op houten beschoeiing
Schaal 120



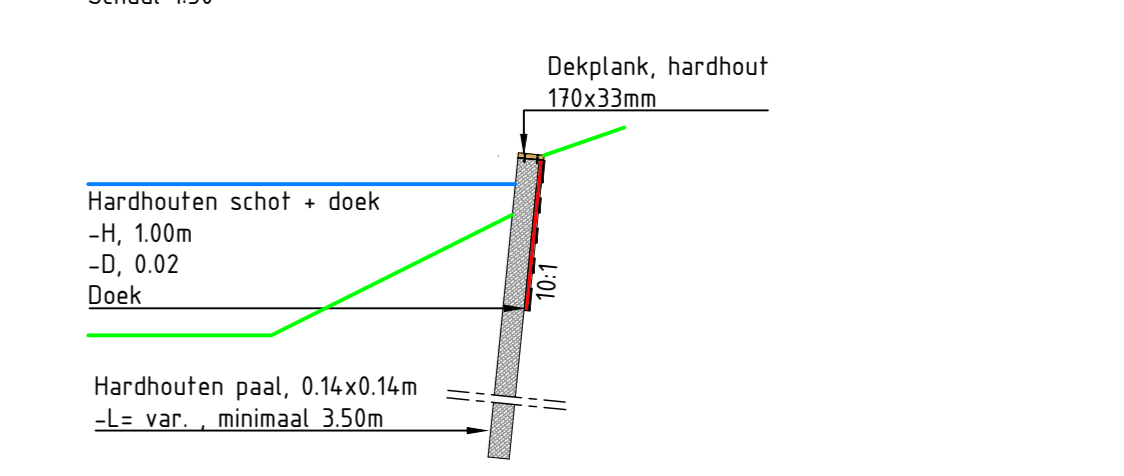
Bovenaanzicht aansluiting stalen damwand op houten beschoeiing
Schaal 120



Detail beschoeiing met anker
Schaal 150



Detail onderwater beschoeiing
Schaal 150



Detail hardhouten beschoeiing
Schaal 150

Opmerkingen
 - Maten in meters en dimensies van materialen in mm, tenzij anders aangegeven.
 - Coördinaten in RD-stelsel en hoogtematen in meters t.o.v. N.A.P.
 - Bestaande situatie binnen projectgrenzen is ingetekend (januari 2024). Buiten projectgrenzen is BGT aangehouden.
 - Op basis van Stedenbouwkundig d.d. 17-04-2025
 - Alle PVC-leidingen SM8

6.0	Definitief	WBT	DAO	DAO	18-05-2024				
10	Eerste uitgave	WBT	DAO	DAO	25-07-2025				
verw.	wijzigingen	getoend	controle	gegeven	opn. uitgifte				
BRAASSEMERLAND VOF									
Braassemerland Fase 4+5									
WRM Fase 4A/4B en 5									
Details WRM Fase 4									
Bestektekening									
projectnr.	222936	status	concept	schaal	150/120	blad	1	tek.	1
bestnr.		blommet	100	formaat	A1	aanpak	1	tek.	1
222936_AdB_Tek_4039									

