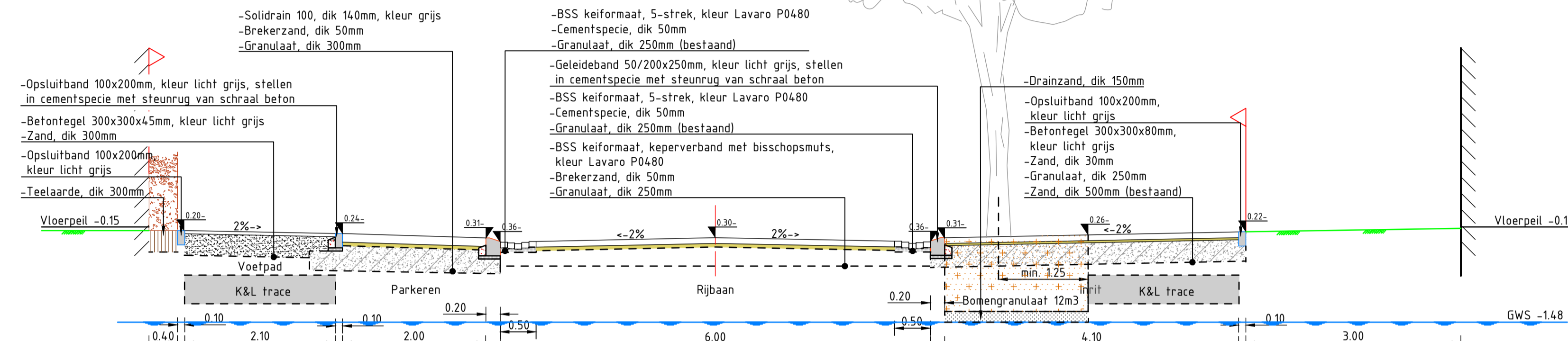
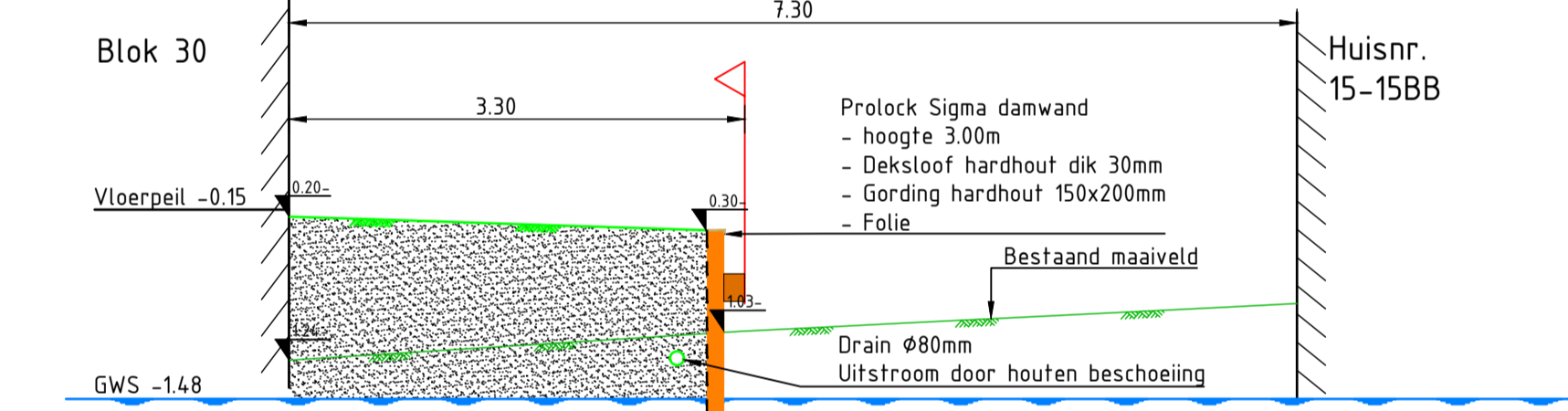


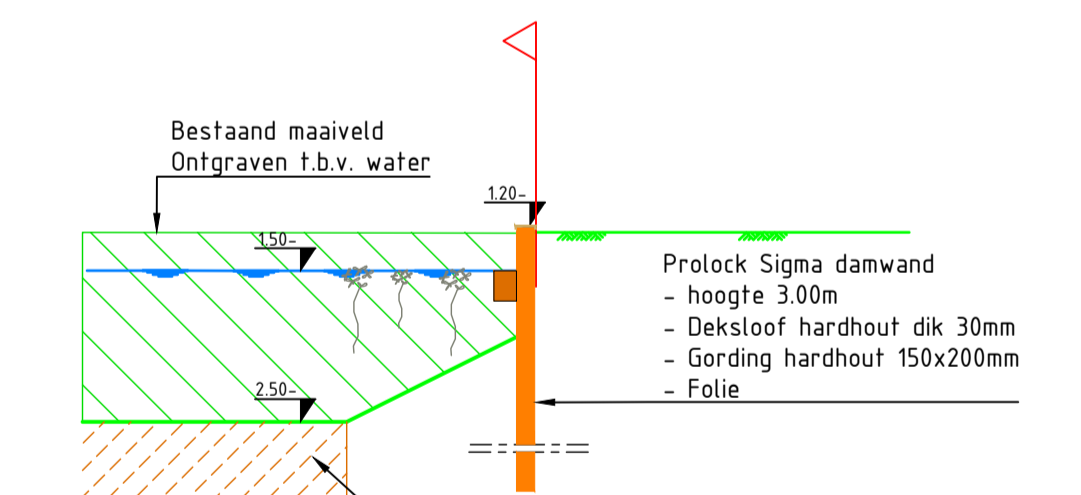
Dwarsprofiel 8-8
Schaal 1:50



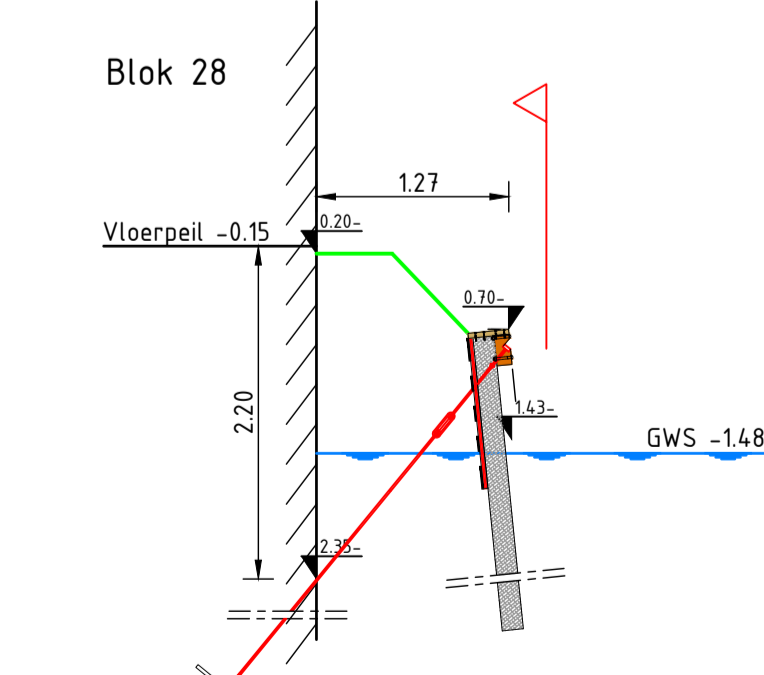
Dwarsprofiel 9-9
Schaal 1:50



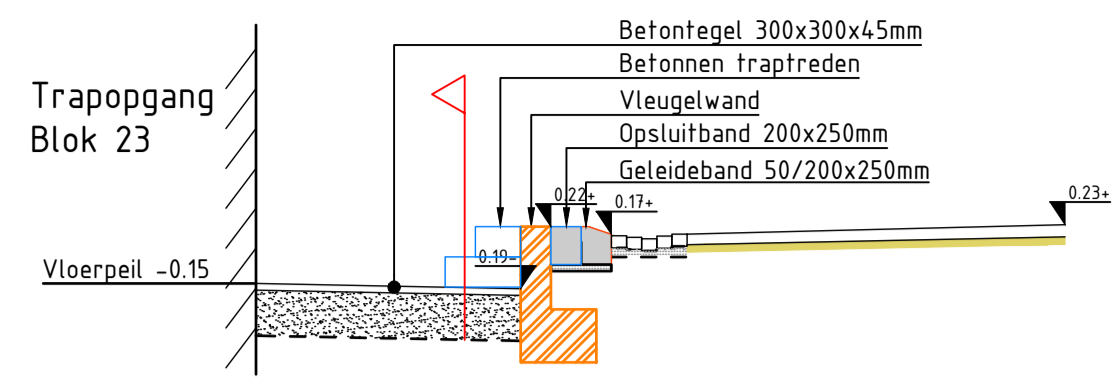
Dwarsprofiel 10-10
Schaal 1:50



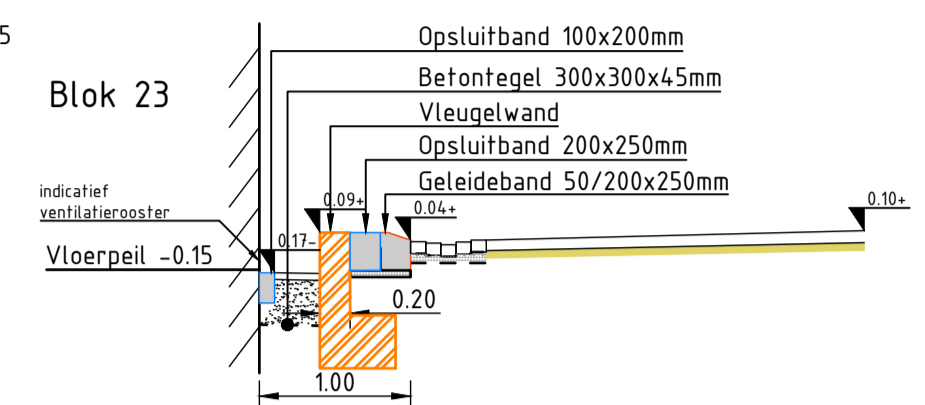
Dwarsprofiel 11-11
Schaal 1:50



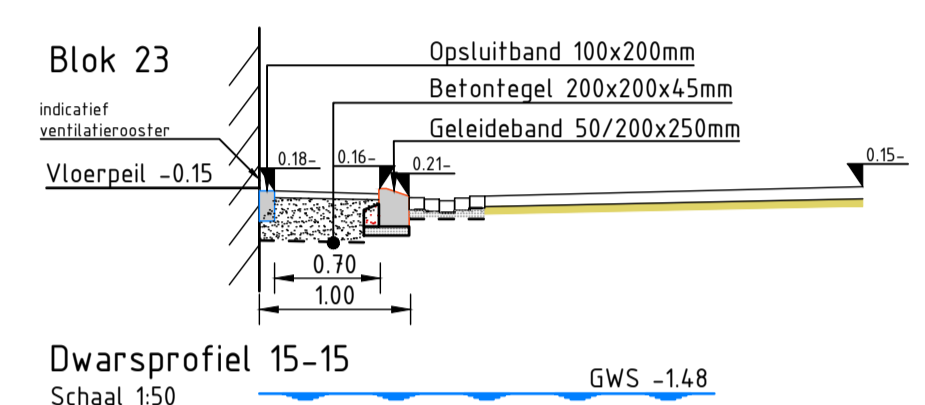
Dwarsprofiel 12-12
Schaal 1:50



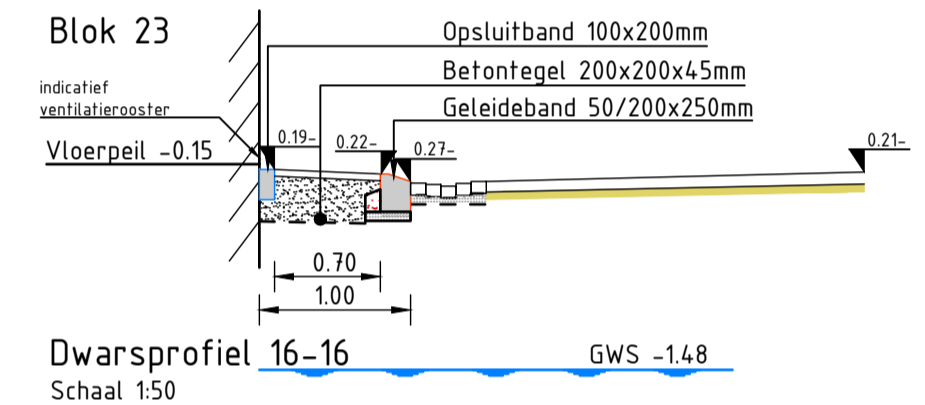
Dwarsprofiel 13-13
Schaal 1:50



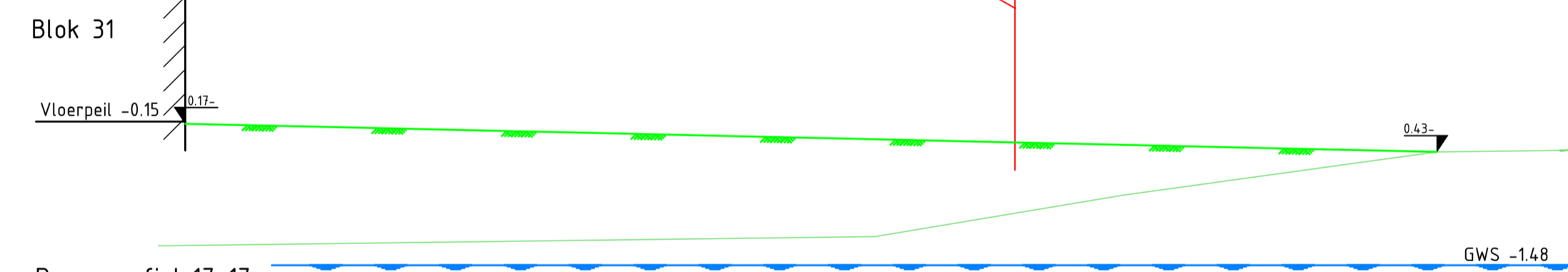
Dwarsprofiel 14-14
Schaal 1:50



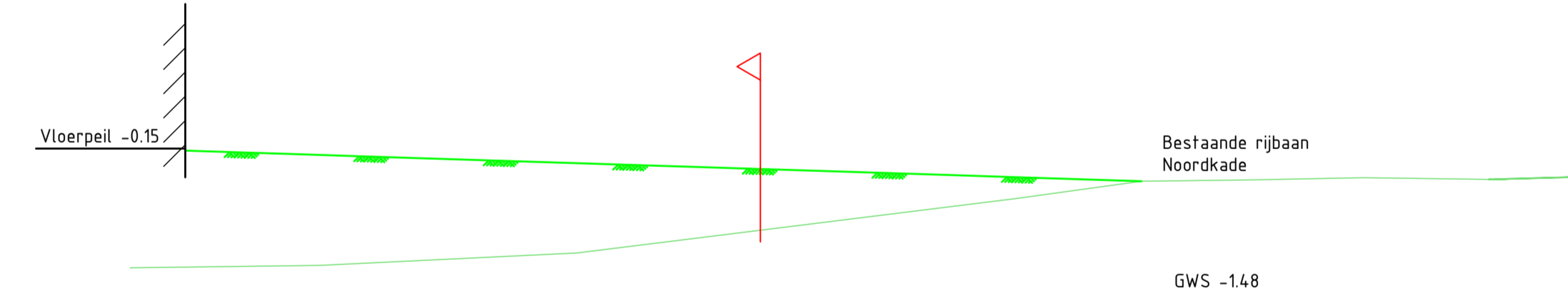
Dwarsprofiel 15-15
Schaal 1:50



Dwarsprofiel 16-16
Schaal 1:50



Dwarsprofiel 17-17
Schaal 1:50



Dwarsprofiel 18-18
Schaal 1:50

Opmerkingen

- Maten in meters en dimensies van materialen in mm, tenzij anders aangegeven.
- Coördinaten in RD-stelsel en hoogtematen in meters t.o.v. N.A.P.
- Op basis van Stedenbouwkundig d.d. 07-04-2025

6.0	Definitief	WBT	DAO	DAO	18-05-2026
1.0	Eerste uitgave	WBT	DAO	DAO	25-07-2025
versie	wijzigingen	getekend	controle	gezien	datum uitgifte
BRAASSEMERLAND VOF					
Braassemerland Fase 4+5					
WRM Fase 4A/4B Dwarsprofielen WRM Fase 4 Besteksteking					
projectnr.	222936	status	Concept	schaal	1:50 blad 2
besteknr.	-	document	TEK	formaat	A0 aantal 2
222936_AdB_TEK_4038					

