

## Air handling units

Order No.: 00622044/05(modification no.1 from 31.01.00)

<b>Customer</b>	<b>Elco Wolf NL</b>	Responsible in yr.	Dhr. R. van Teijgelaar
		com	
Project / commission	Stadsgevangenis Koddeweg te Hoogvliet	Pos	AVE 218.01
Responsible in our com	Monika Ziegler	Order volume	1
Your job number	891804/20		
Unit typee	Exhaust air Horizontal		
<b>Unit size exhaust air</b>	<b>KG 40 Gigant</b>	Air volume exhaust air	1785 m <sup>3</sup> /h

Casing design Gigant-casing

### Exhaust air:

#### (1) Exhaust air section/empty section

Damper S internal Flexible connection S

#### (2) Bag filter section

Initial resistance	53 Pa	Selection resistance	103 Pa
Access door bag filter section		Filter bag F5	
Lamp 24 Volt (dry room),Mounted and wired			

#### (3) Cooling section

Heat exchanger typee	Cu/Cu SOKA 3872	Medium off temp.	0,1 °C
Connection(inlet/outlet)		Medium flow rate	3,50 m <sup>3</sup> /h
Air-on temperature	20,0 °C	Antifreeze percentile	30 %
Relative humidity	40,0 %	Pressure drop medium	13,5 kPa
Air-off temperature	3,4 °C		
Relative humidity	99,9 %		
Capacity (total )	10,7 kW		
Pressure drop(drop elim.)	18 Pa		
Air pressure drop	47 Pa		
Special heat exchanger			
Designation	Sonder Register	Special number	38721
Drop eliminator,T 400		Drain connection on connection side	

#### (4) Attenuator type 3

Selection resistance 6 Pa Insertion attenuation

63 Hz	125 Hz	250 Hz	500 Hz	1000 Hz	2000 Hz	4000 Hz	8000 Hz
7 dBA	14 dBA	24 dBA	25 dBA	26 dBA	20 dBA	14 dBA	13 dBA

#### (5) Fan,Standard design

Air volume	1785 m <sup>3</sup> /h	Fan - speed	2674 1/min
External pressure	200 Pa	Peripheral velocity	31,5 m/s
Internal pressure	190 Pa	Efficiency	80,5 %
Dynamic pressure	23 Pa	<b>Motor - capacity</b>	<b>0,5/0,1 kW</b>
Total pressure	413 Pa	<b>Motor - speed</b>	<b>1500/750 1/min</b>
Impeller	Backward inclined	<b>Motor - voltage</b>	<b>3*400 V</b>
Fan type	T-HLZ 225	<b>Motor-current*</b>	<b>1,8/0,7 A</b>
Discharge position	B	Motor size	80
Fan - capacity	0,25 kW	Total sound power	81,4 dB

**\*max. nom. current:motors used are slightly different.Choose range of overload relay so that stated nom. current is within the upper third.**

Flexible connection D	Access door
Isolator mounted and wired,AR 6/5,5	<b>Motor protection,Without motor protection</b>
Fan pulley,Text-Nummer nicht gefunden: 353522	Motor pulley,not adjustable, acc. to technical department
Lamp 24 Volt (dry room),Mounted and wired	

## General accessory:

1 Pcs. Linkage external, Linkage 1 (lever)

1 Pcs. Diff. pressure manometer, Dwyer - Minihelic  
mounted, Filter

1 Pcs. Indicator thermometer, Mounted, Teil 1

1 Pcs. Indicator thermometer, Mounted, Teil 5

6 Pcs. Cable inlet, Without traction relief, 4x Druck, 2x Temp.

## Unit dimensions

Length

3620 mm

Breadth

710 mm

Height

710 mm

Weight

307 kg

Änderungslegende:

Underlined values were changed

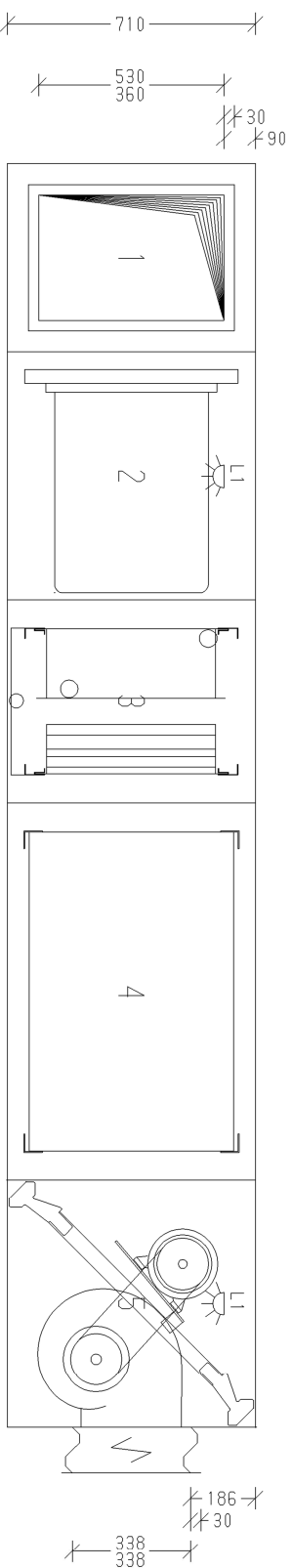
~~Crossed out values were blanked~~



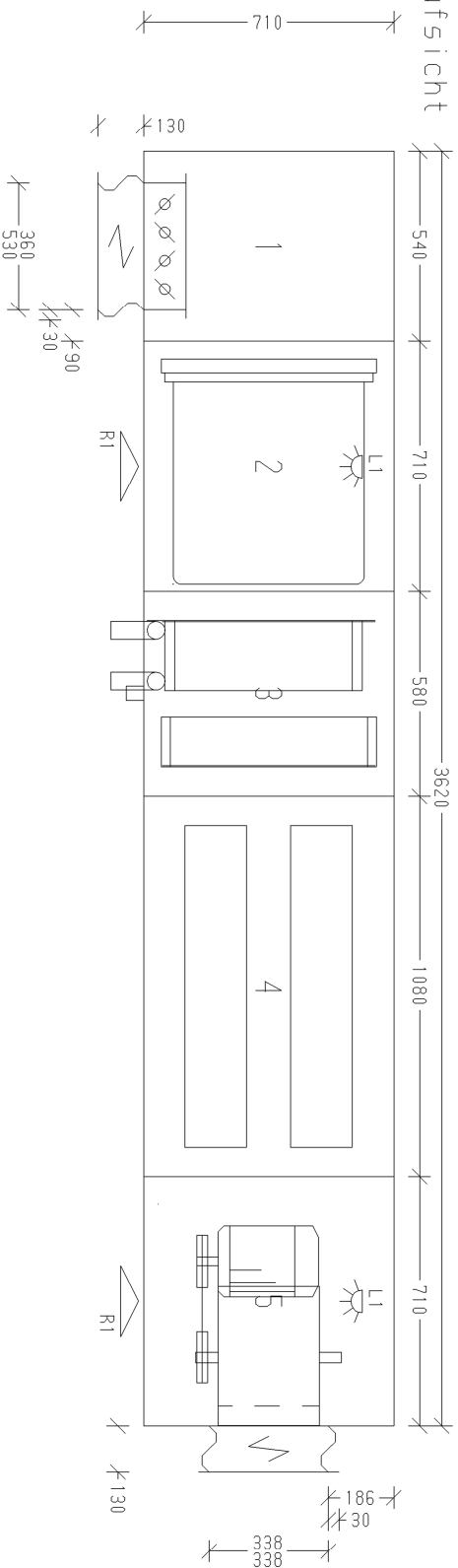
Wolf GmbH  
84048 Mainburg  
Telefon 08751/74-0  
Fax 08751/741574

Gerät in 1 Teil liefern.  
Überstand Jalousiekloppengestänge max. 120  
mm ab Geräteaußenkante auf Bedienungsseite  
außenliegend.

ansicht



raufsicht



- 5 Ventilatorteil ca. 79kg
- 4 Schalldämpferteil Typ 3 ca. 79kg
- 3 Kühlerenteil ca. 49kg
- 2 Taschenfilterteil F5 ca. 51kg
- 1 Fortluftteil/Leerenteil ca. 49kg
- Gesamtwicht ca. 307kg

Kunde: Elco Wolf NL

Projektname: Stödsgevingen is Koddeweg te Hoog

Position: RUE 218. 01

Bearbeitet: 99 Datum ZM Name

Projekt-Nr.: 00622044/05

KG 40 Gigant