

Fire Integrity of bulkheads separating adjacent spaces											
space category	(1)	(2)	(3)	(4)	(5)	(6)	(7)	(8)	(9)	(10)	(11)
(1)	A-0 ^[e]	A-0	A-60	A-0	A-15	A-60	A-15	A-60	A-60	*	A-60
(2)		C	B-0	A-0 ^[c] B-0	B-0	A-60	A-0	A-0	A-0	*	A-30
(3)			C ^[a,b]	A-0 ^[c] B-0	B-0	A-60	A-0	A-0	A-0	*	A-30
(4)				A-0 ^[c] B-0	A-0 ^[c] B-0	A-60	A-0	A-0	A-0	*	A-30
(5)					C	A-60	A-0	A-0	A-0	*	A-0
(6)						*	A-0 ^[g]	A-60	A-60	*	A-60 ^[f]
(7)							A-0 ^[d]	A-0	A-0	*	A-0
(8)								*	A-0	*	A-0
(9)									A-0 ^[d]	*	A-30
(10)										-	A-0
(11)											A-30 ^[i]

Fire Integrity of decks separating adjacent spaces											
space category	Space above										
	(1)	(2)	(3)	(4)	(5)	(6)	(7)	(8)	(9)	(10)	(11)
(1)	A-0	A-0	A-0	A-0	A-0	A-60	A-0	A-0	A-0	*	A-60
(2)	A-0	*	*	A-0	*	A-60	A-0	A-0	A-0	*	A-30
(3)	A-60	A-0	*	A-0	*	A-60	A-0	A-0	A-0	*	A-30
(4)	A-0	A-0	A-0	*	A-0	A-60	A-0	A-0	A-0	*	A-30
(5)	A-15	A-0	A-0	A-0	*	A-60	A-0	A-0	A-0	*	A-0
(6)	A-60	A-60	A-60	A-60	A-60	*	A-60 ^[j]	A-30	A-60	*	A-60
(7)	A-15	A-0	A-0	A-0	A-0	A-0	*	A-0	A-0	*	A-0
(8)	A-60	A-0	A-0	A-0	A-0	A-0	A-0	*	A-0	*	A-0
(9)	A-60	A-0	A-0	A-0	A-0	A-60	A-0	A-0	A-0 ^[k]	*	A-30
(10)	*	*	*	*	*	*	*	*	*	*	A-0 ^[l]
(11)	A-60	A-30	A-30	A-30	A-0	A-60	A-0	A-0	A-30	A-0 ^[i]	A30 ^[i]

- [a] No special requirements are imposed upon bulkheads in methods IIC and IIIC fire protection.
- [b] In case of method IIIC "B" class bulkheads of "B-0" rating shall be provided between spaces or groups of spaces of 50 m² and over in area.
- [c] For clarification as to which applies, see paragraphs 2.3.2 and 2.3.4.
- [d] Where spaces are of the same numerical category and superscript "d" appears, a bulkhead or deck of the rating shown in the tables is only required when the adjacent spaces are for a different purpose (e.g. in category (9)). A galley next to a galley does not require a bulkhead but a galley next to a paint room requires an "A-0" bulkhead.
- [e] Bulkheads separating the wheelhouse, chartroom and radio room from each other may have a "B-0" rating.
- [f] An "A-0" rating may be used if no dangerous goods are intended to be carried or if such goods are stowed not less than 3 m horizontally from such a bulkhead.
- [g] For cargo spaces in which dangerous goods are intended to be carried, regulation 19.3.8 applies.
- [i] Fire insulation need not be fitted in the machinery space in category (7) if, in the opinion of the Administration, it has little or no fire risk.
- [j] Ships constructed before 1 July 2014 shall comply, as a minimum, with the previous requirements applicable at the time the ship was constructed.

* Where an asterisk appears in the tables, the division is required to be of steel or other equivalent material but is not required to be of "A" class standard. However, where a deck, except an open deck, is penetrated for the passage of electric cables, pipes and vent ducts, such penetrations should be made tight to prevent the passage of flame and smoke. Divisions between control stations (emergency generators) and open decks may have air intake openings without means for closure, unless a fixed gas fire-fighting system is fitted.

SOLAS CH. II-2, Part C, Reg. 9, 2.3 - Cargo ships except tankers

FIRE RISK CATEGORY:

(1) Control stations

Spaces containing emergency sources of power and lighting. Wheelhouse and chartroom. Spaces containing the ship's radio equipment. Fire control stations. Control room for propulsion machinery when located outside the machinery space. Spaces containing centralized fire alarm equipment.

(2) Corridors

Corridors and lobbies.

(3) Accommodation spaces

Spaces used for public spaces, lavatories, cabins, offices, hospitals, cinemas, game and hobby rooms, barber shops, pantries containing no cooking appliances and similar spaces.

(4) Stairways

Interior stairway, lifts, totally enclosed emergency escape trunks, and escalators (other than those wholly contained within the machinery spaces) and enclosures thereto. In this connection, a stairway which is enclosed only at one level shall be regarded as part of the space from which it is not separated by a fire door.

(5) Service spaces (low risk)

Lockers and store-rooms not having provisions for the storage of flammable liquids and having areas less than 4 m² and drying rooms and laundries.

(6) Machinery spaces of category A

Spaces and trunks to such spaces contain: internal combustion machinery used for main propulsion; internal combustion machinery used for purposes other than main propulsion where such machinery has in the aggregate a total power output of not less than 375 kW; or any oil-fired boiler or oil fuel unit, or any oil-fired equipment other than boilers, such as inert gas generators, incinerators, etc.

(7) Other machinery spaces

Spaces, other than machinery of Category A, containing propulsion machinery, boilers, oil fuel units, steam and internal combustion engines, generators and major electrical machinery, oil filling stations, refrigerating, stabilizing, ventilation and air conditioning machinery, and similar spaces, and trunks to such spaces. Electrical equipment rooms (auto-telephone exchange, air conditioning duct spaces).

(8) Cargo spaces

All spaces used for cargo (including cargo oil tanks) and trunkways and hatchways to such spaces.

(9) Service spaces (high risk)

Galleys, pantries containing cooking appliances, saunas, paint lockers and store-rooms having areas of 4 m² or more, spaces for the storage of flammable liquids, and workshops other than those forming part of the machinery spaces.

(10) Open decks

Open deck spaces and enclosed promenades having little or no fire risk. To be considered in this category, enclosed promenades shall have no significant fire risk, meaning that furnishings shall be restricted to deck furniture. In addition, such spaces shall be naturally ventilated by permanent openings. Air spaces (the space outside superstructures and deckhouses).

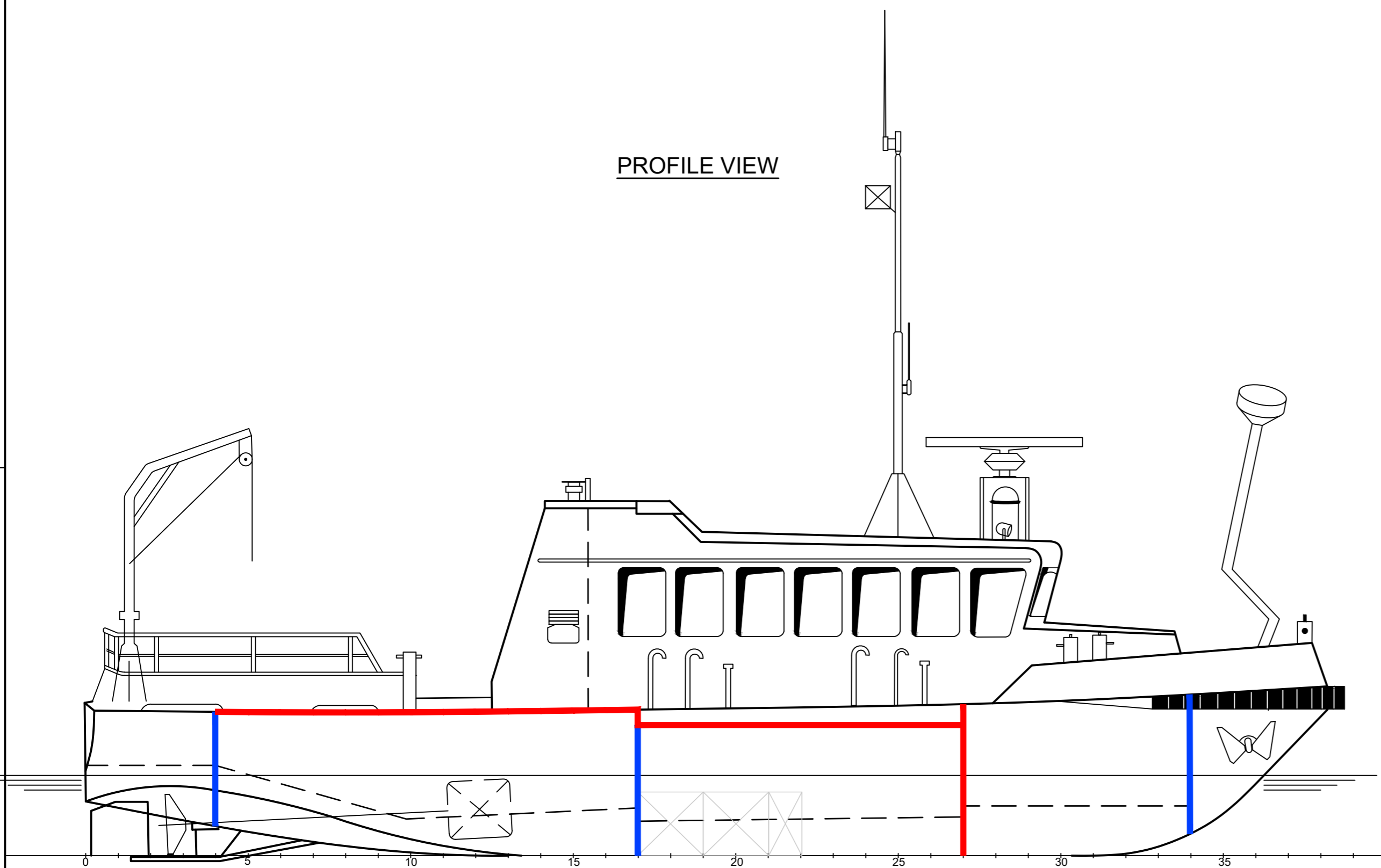
(11) Ro-ro and vehicle spaces

General Notes:

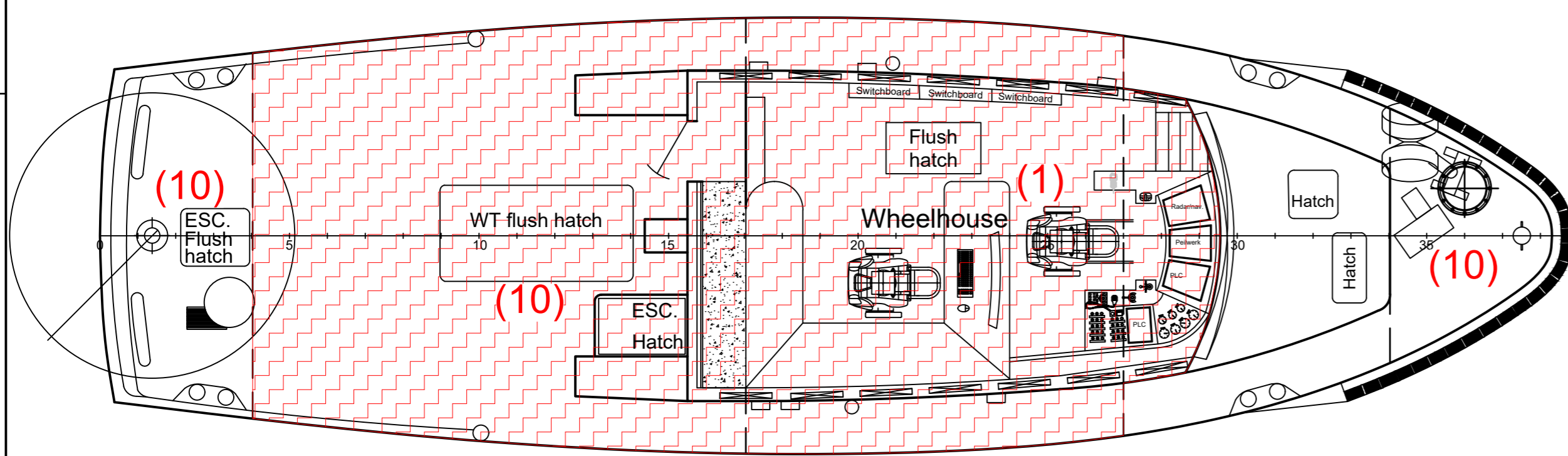
The vessel designed and equipped to sail dangerous cargoes as seagoing vessel In cat.(5) spaces no flammables will be kept inside.

METHOD IC OF FIRE PROTECTION SHALL BE APPLIED.

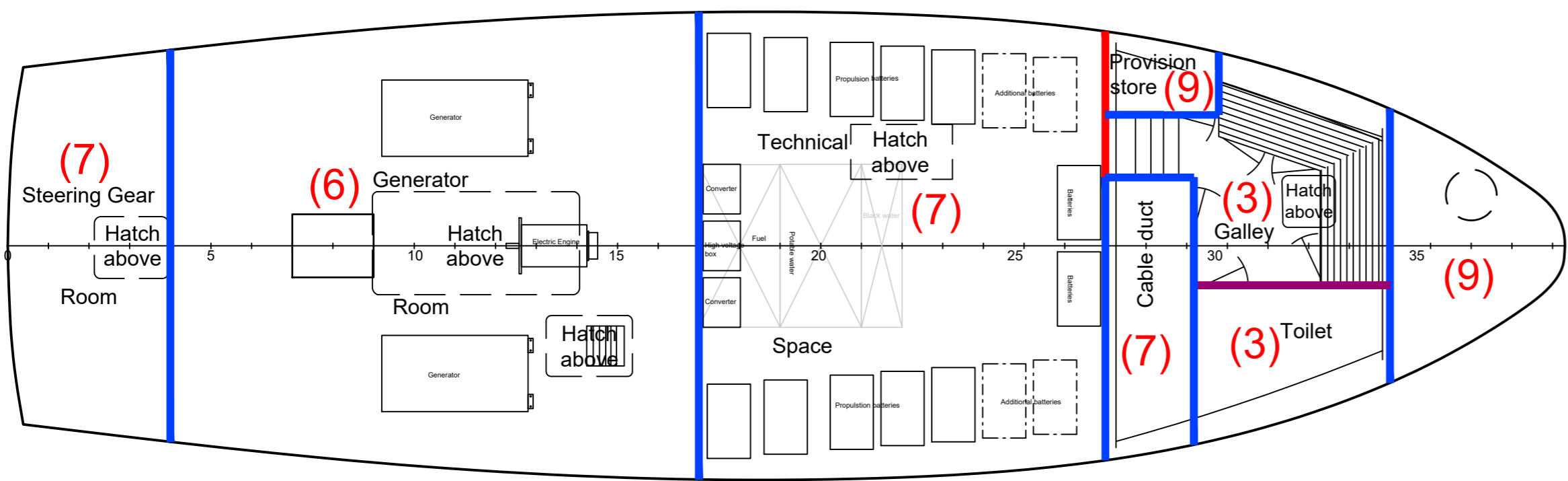
PROFILE VIEW



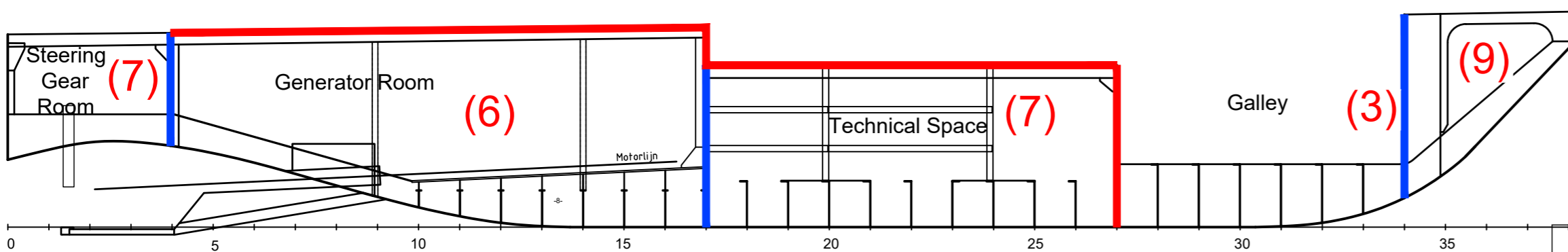
MAIN DECK



Below Deck



Profile CL



FIRE INTEGRITY	DECKS/BULKHEADS	DECKS (PLAN VIEWS)
A60	Red line	Red hatched pattern
A30	Green line	Green hatched pattern
A15	Yellow line	Yellow hatched pattern
A0	Blue line	Blue hatched pattern
B0	Orange line	Orange hatched pattern
C	Purple line	Purple hatched pattern
	SELF CLOSING DOOR	SCD symbol

THE NUMBER INDICATED IN A BRACKET (...) ON THE DRAWING SHOWS THE FIRE RISK CATEGORY OF THE SPACE.
* MEANS STEEL OR EQUIVALENT, BUT NOT A-CLASS.
(TO BE TIGHT AGAINST THE PASSAGE OF SMOKE AND FLAME).

Havenschap 2

Main Particulars

Length o.a. (Loa)= 15.5 m
Breath o.a. (B)= 4.67
Depth (D)= 1.85 m
Draft (T)= 1 m
Vs = 5.4 kn
Vmax = 8.6 kn

Reference Documents:

- A3052-1001-General Arrangement

REV	DATE	MADE BY	APPROVED BY	DESCRIPTION
 COPYRIGHT CONOSHIP INTERNATIONAL B.V. 2009 All rights reserved. This document or any part thereof may not be made public or disclosed, copied or otherwise reproduced or used in any form or by any means, including, but not limited to, use hereof for the design and manufacturing of identical, similar or derived designs, nor identical, similar or derived documents and specifications, without prior written consent of Conoship International B.V. P.O.Box 6029 - GRONINGEN - THE NETHERLANDS				
DRAWING NO.		A3052-3115		
DESCRIPTION				
Fire Control and Safety Plan				
SCALE	SIZE	YARD NO.	VERSION:	SHEET:
1:50	A1	A3052	00	1-1
DRAWN BY:	DATE:	APPROVED BY:	DATE:	
APS	31-07-2025	RTH	11-08-2025	