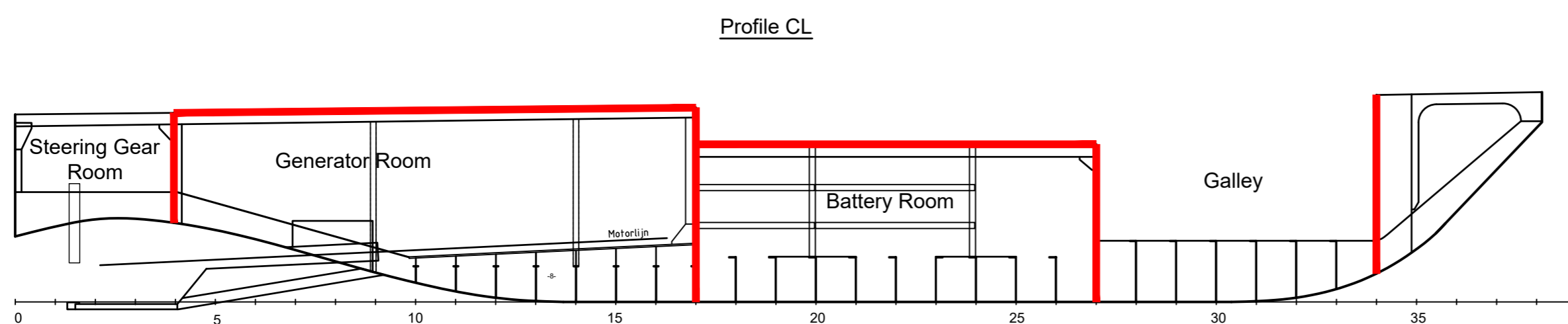
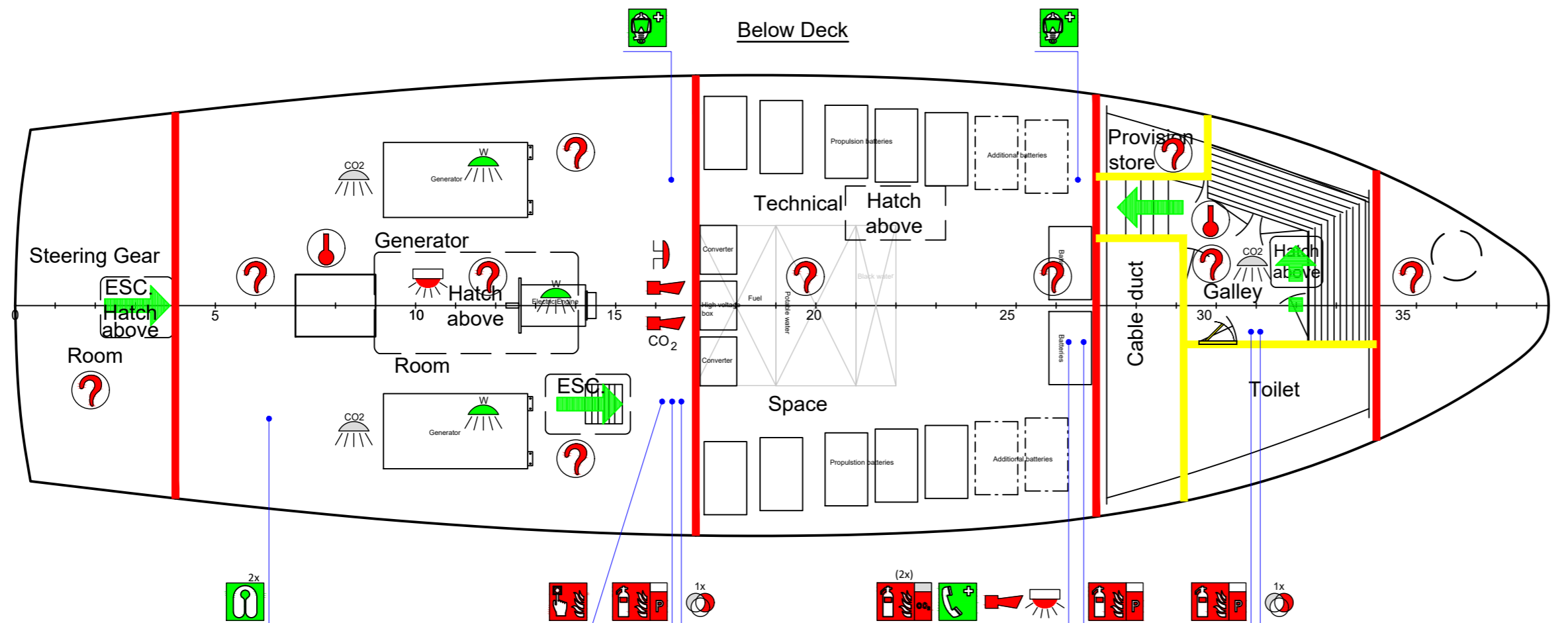
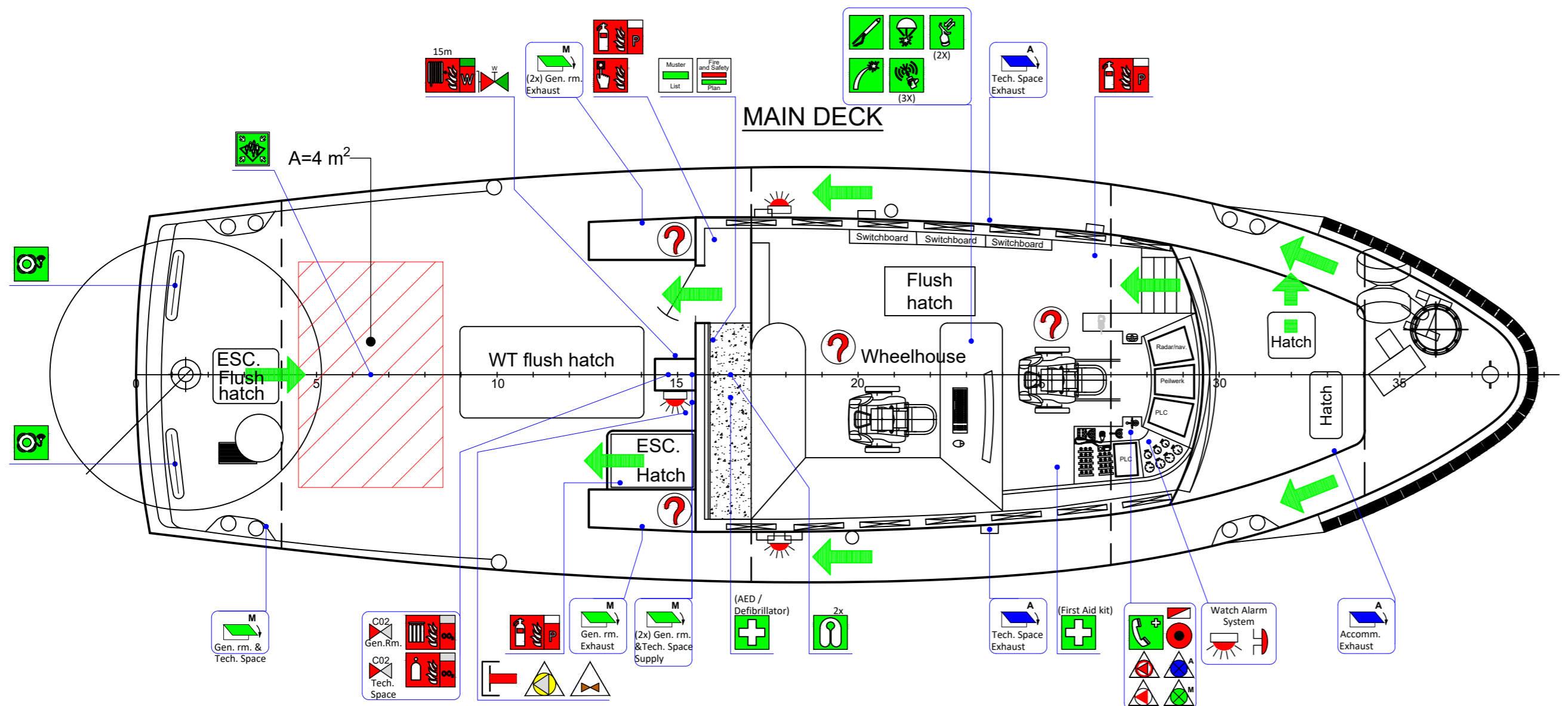
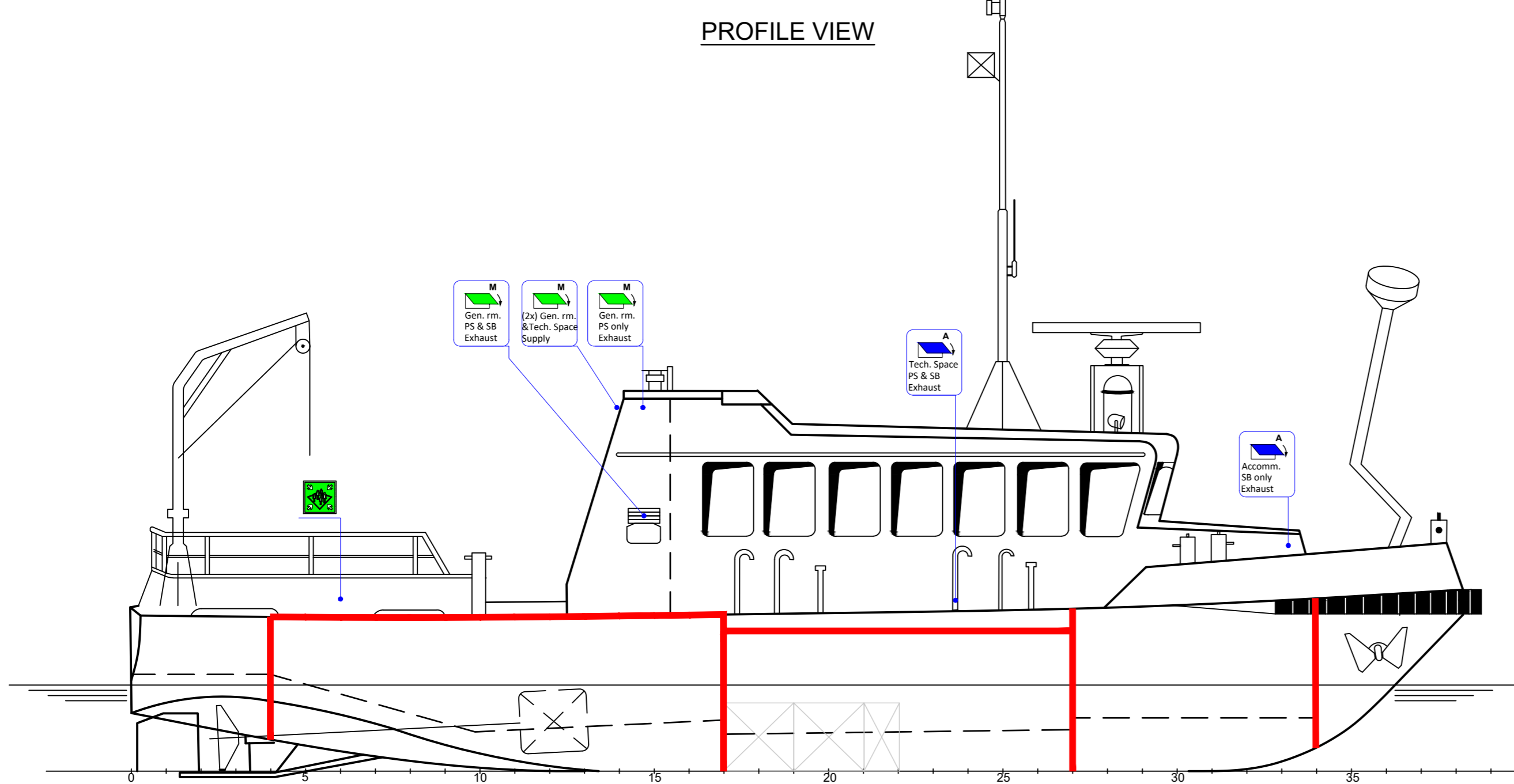


# FIRE CONTROL & SAFETY PLAN



## Havenschap 2

**Main Particulars**  
 Length o.a. (Loa)= 15.5 m  
 Breadth o.a. (B)= 4.67 m  
 Depth (D)= 1.85 m  
 Draft (T)= 1 m  
 Vs = 5.4 kn  
 Vmax = 8.6 kn

FIRE PROTECTION	
	A-CLASS DIVISION
	B-CLASS DIVISION
	A-CLASS DIVISION hinged self-closing fire door
	B-CLASS DIVISION hinged self-closing fire door
	A-CLASS DIVISION hinged fire door
	B-CLASS DIVISION hinged fire door

Accommodation fire protection:  
 Method IC  
 (All equipment of approved type  
 and according SOLAS Ch.II-2)

ESCAPE ROUTES	
	PRIMARY MEANS OF ESCAPE
	SECONDARY MEANS OF ESCAPE

WHEELHOUSE		MAIN DECK		BELOW DECK		TOTAL	SYMBOL	DESCRIPTION	REMARKS
<b>SAFETY INFORMATION</b>									
1	.	.	.	1			FIRECONTROL & SAFETYPLAN		
.	.	.	.	.			FIRECONTROL & SAFETYPLAN IN W.T. CONTAINER		
1	.	.	.	1			MUSTER LIST		
<b>WATER SUPPLY SYSTEMS</b>									
.	.	.	.	.			FIF/ GENERAL SERVICE PUMP	50 m3/h @ 5 bar	
.	.	.	.	.			EMERGENCY FIRE PUMP	50 m3/h @ 5 bar	
1	.	.	.	1			REMOTE CONTROL FIRE PUMPS		WHEELHOUSE
1	.	.	.	1			REMOTE CONTROL EMERGENCY FIRE PUMP		WHEELHOUSE
.	.	.	.	.			SPRINKLER FIRE FIGHTING SYSTEM (1 Line, 2 Nozzles)		PAINTSTORE
.	.	.	.	.			WATERSPRAY SYSTEM VALVE		
.	.	.	.	.			SECTION VALVE IN FIREFIGHTING SYSTEM		
1	.	.	.	1			FIRE HYDRANT		
1	.	.	.	1			INTERNATIONAL SHORE CONNECTION (suitable for every HYDRANT)		
1	.	.	.	1			HOSE BOX WITH SPRAY-JET FIRE NOZZLE	1 x 15m	
<b>DETECTORS</b>									
4	.	.	.	10	14		SMOKE DETECTOR		SEE NOTE
.	.	.	.	2	2		HEAT DETECTOR		SEE NOTE
<b>ALARMS AND SIGNALS</b>									
1	.	.	.	.	1		GENERAL-/FIRE ALARM PUSH BUTTON		
1	.	.	.	1	2		MANUALLY OPERATED CALL POINT		
1	.	.	.	.	1		FIRE ALARM PANEL		
1	.	.	.	1	1		GENERAL-/FIRE ALARM BELL		
.	.	.	.	.	1		WARNING FOR ADMITTING CO2		
.	.	.	.	.	2		HORN GENERAL / FIRE ALARM		
1	.	.	.	1	2		EMERGENCY TELEPHONE		
4	.	.	.	2	6		FLASHLIGHT		
<b>FIREFIGHTING</b>									
3	1	.	.	3	7		FIRE-FIGHTER'S OUTFIT		SEE NOTE
.	.	.	.	2	2		DRY POWDER EXTINGUISHER	6 kg.	
.	.	.	.	.	.		CO2 EXTINGUISHER	5 kg.	
.	.	.	.	.	.		WHEELED FOAM EXTINGUISHER	45 kg.	SEE NOTE
.	.	.	.	.	.		PORTABLE FOAM APPLICATOR WITH TWO CANS	2x20 Ltr.	
.	.	.	.	.	.		FIRE BLANKET		
.	.	.	.	2	2		SPARE CHARGES FOR FIRE EXTINGUISHERS		SEE NOTE
1	.	.	.	1	1		CO2 BATTERY	? x BOTTLE ?? Ltr.	
1	.	.	.	1	1		CO2 RELEASE STATION		
.	.	.	.	3	3		AREA PROTECTED BY CO2 SYSTEM		
2	.	.	.	2	2		CO2 SECTION VALVE (1x GEN. RM, 1x Tech. Space)		
<b>VENTILATION SYSTEMS</b>									
.	.	.	.	.	.		FIRE DAMPER VENT. DUCT IN/OUTLET	GREEN	M=MACHINERY SPACES
.	.	.	.	.	.		FIRE DAMPER VENT. DUCT IN/OUTLET	YELLOW	C=CARGO SPACES
.	.	.	.	.	.		FIRE DAMPER VENT. DUCT IN/OUTLET	BLUE	A=ACCOMMODATION + SERVICE SPACES
5	.	.	.	5	5		CLOSING DEVICE VENT. IN/OUTLET	GREEN	M=MACHINERY SPACES
.	.	.	.	.	.		CLOSING DEVICE VENTILATION IN/OUTLET	YELLOW	C=CARGO SPACES
1	2	.	.	3	3		CLOSING DEVICE VENTILATION IN/OUTLET	BLUE	A=ACCOMMODATION + SERVICE SPACES
1	.	.	.	1	1		REMOTE VENTILATION SHUTOFF	GREEN	M=MACHINERY SPACES
.	.	.	.	.	.		REMOTE VENTILATION SHUTOFF	YELLOW	C=CARGO SPACES
1	.	.	.	1	1		REMOTE VENTILATION SHUTOFF	BLUE	A=ACCOMMODATION + SERVICE SPACES
<b>FUEL / LUB. OIL SYSTEMS</b>									
1	.	.	.	1	1		FUEL PUMP(S) REMOTE SHUT-OFF		SOS Locker / WH
1	.	.	.	1	1		REMOTE CONTROL FUEL OIL VALVES		SOS Locker / WH
.	.	.	.	3	3		AREA PROTECTED BY LOCAL APPLICATION WATER MIST SYSTEM		
<b>ESCAPE ROUTES</b>									
.	.	.	.	.	.		PRIMARY MEANS OF ESCAPE		
.	.	.	.	.	.		SECONDARY MEANS OF ESCAPE		
.	.	.	.	.	.		A-CLASS DIVISION hinged self-closing fire door		
.	.	.	.	.	.		B-CLASS DIVISION hinged self-closing fire door		
<b>LIFESAVING APPLIANCES</b>									
.	.	.	.	2	2		EMERGENCY ESCAPE BREATHING DEVICE 15min.		
.	1	.	.	1	1		MUSTER STATION (assembly)		
.	.	.	.	.	.		FREE FALL LIFE BOAT / LIFE & RESCUE BOAT	1 x 12 persons	
.	.	.	.	.	.		Man Over Board (MOB) BOAT	1 x 6 persons	
.	.	.	.	.	.		LIFERAFT (THROW OVERBOARD PS, crane SB)		
.	.	.	.	.	.		EMBARKATION LADDER L=18m.		
.	.	.	.	.	.		PILOT LADDER L=8m.		
.	.	.	.	.	.		LIFEBUOY WITH SELFIGNITING LIGHT & SMOKE SIGNAL		
2	.	.	.	2	2		LIFEBUOY WITH SELFIGNITING LIGHT		
.	.	.	.	.	.		LIFEBUOY WITH LINE L=30m.		
.	.	.	.	.	.		LIFEBUOY		
2	.	.	.	2	4		LIFEJACKET WITH SELFIGNITING LIGHT		
.	.	.	.	.	.		IMMERSION SUIT		
3	.	.	.	3	3		TWO-WAY VHF RADIOTELEPHONE (PORTOPHONE)		
.	.	.	.	.	.		EMERGENCY POSITION INDICATING RADIO BEACON (EPIRB)		
2	.	.	.	2	2		SART RADARTRANSPONDER		
1	.	.	.	1	1		SET OF 12 ROCKET PARACHUTE FLARES		
1	.	.	.	1	1		LINE-THROWING APPLIANCE (4 LINE-THROWING DEVICES)		
.	.	.	.	.	.		STRETCHER		
2	.	.	.	2	2		MEDICAL LOCKER		
.	.	.	.	.	.		MEDICAL OXYGEN RESUSCITATOR	10 Ltr.	
1	.	.	.	1	1		SET OF DISTRESS SIGNALS: 6 HAND FLARES		

**Notes:**

- All manually operated callpoints, smoke detectors, heat detectors, flame detectors, general alarm and fire alarm is as per drawings/instructions of the electrical installer/specialist.
- REMOTE CONTROL OF FIRE PUMPS AND EMERGENCY FIRE PUMPS via alarm monitoring system display located in the wheelhouse console.

**Reference Documents:**

- A3052-0530-Preliminary ventilation diagram
- A3052-1001-General Arrangement

REV	DATE	MADE BY	APPROVED BY	DESCRIPTION

COPYRIGHT CONOSHIP INTERNATIONAL B.V. 2009  
 All rights reserved. This document or any part thereof may not be made public or disclosed, copied or otherwise reproduced or used in any form or by any means, including, but not limited to, use hereof for the design and manufacturing of identical, similar or derived designs, nor identical, similar or derived documents and specifications, without prior written consent of Conoship International B.V. P.O.Box 6029 - GRONINGEN - THE NETHERLANDS

**DRAWING NO. A3052-3114**

**DESCRIPTION**  
**Fire Integrity Plan**

SCALE: 1:50	SIZE: A1	YARD NO. A3052	VERSION: 00	SHEET: 1-1
DRAWN BY: APS	DATE: 31-07-2025	APPROVED BY: RTH	DATE: 11-08-2025	