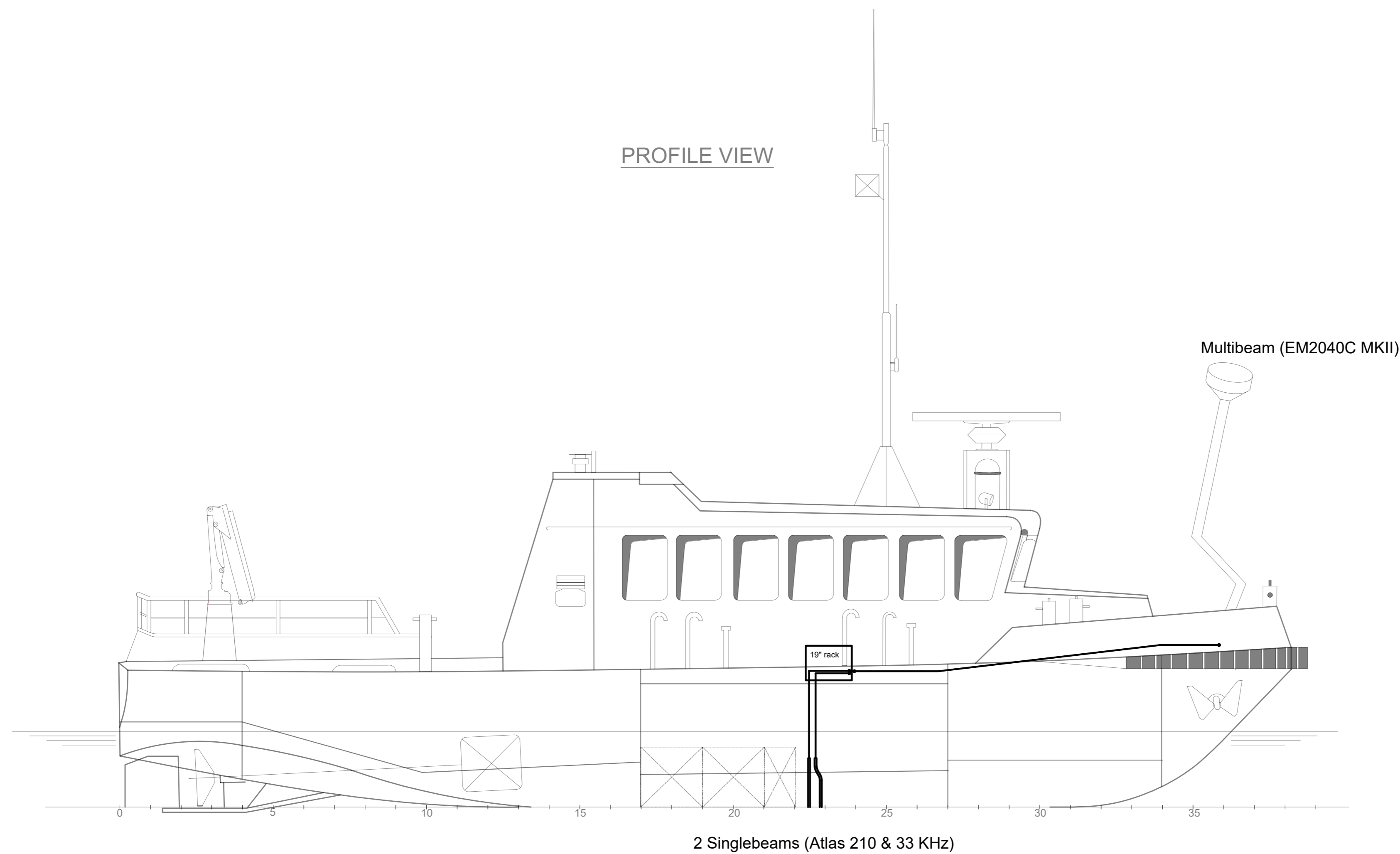
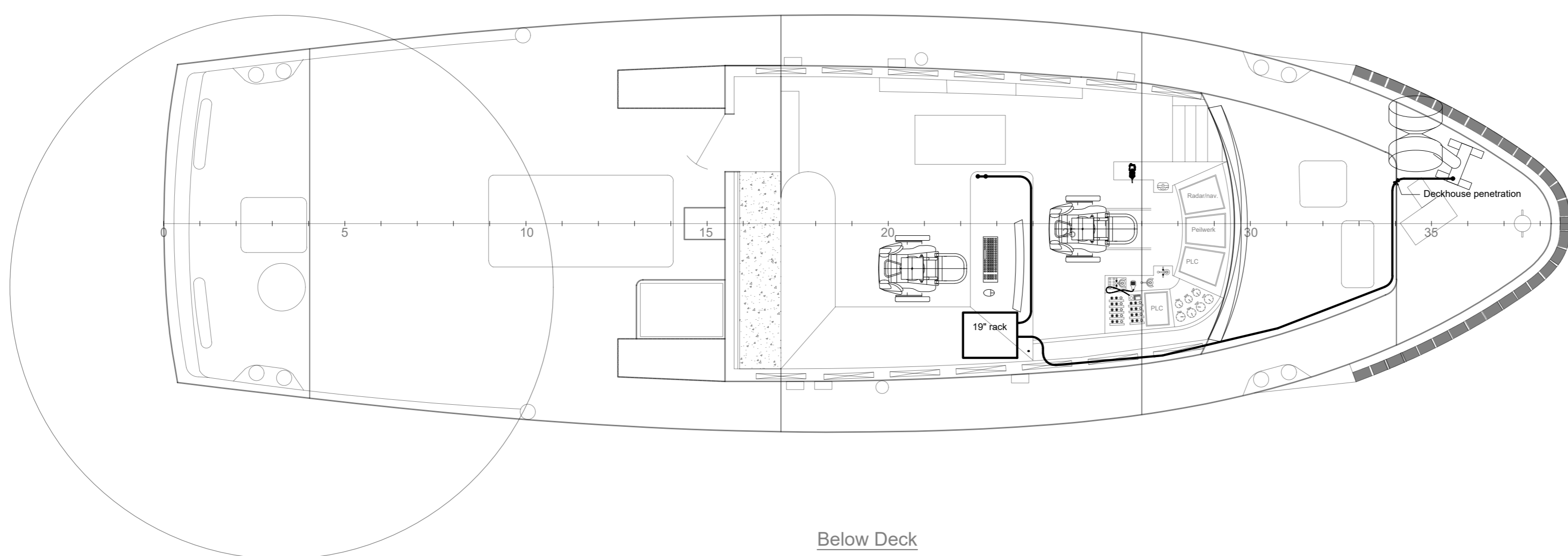


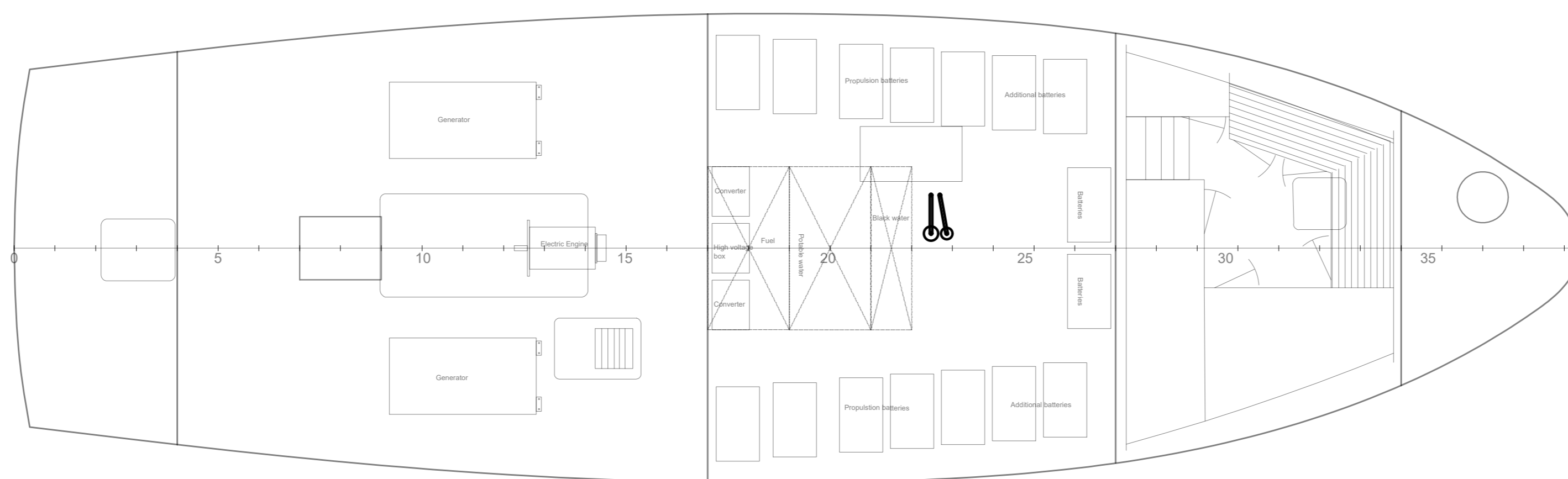
PROFILE VIEW



MAIN DECK



Below Deck



General Information

- Each line represents a set (2) of transducer cables
- Diameter of transducer cable = 14 mm
- Max bending radius = 130 mm
- Diameter of cable connector = 35 mm
- Interior is to be designed such that cable and connectors/penetrations are easily accessible

REV	DATE	MADE BY	APPROVED BY	DESCRIPTION
<small>COPYRIGHT CONOSHIP INTERNATIONAL B.V. 2009. All rights reserved. This document or any part thereof may not be made public or disclosed, copied or otherwise reproduced or used in any form or by any means, including, but not limited to, use hereof for the design and manufacturing of identical, similar or derived designs, nor identical, similar or derived documents and specifications, without prior written consent of Conoship International B.V. P.O.Box 6029 - GRONINGEN - THE NETHERLANDS</small>				
DRAWING NO.		A3052-5500		
DESCRIPTION				
Routing of Transducer cable				
SCALE	SIZE:	YARD NO.	VERSION:	SHEET:
1:40	A1	A3052	00	
DRAWN BY:	DATE:	APPROVED BY:	DATE:	
RTH	19-08-2025	HRF	20-08-2025	