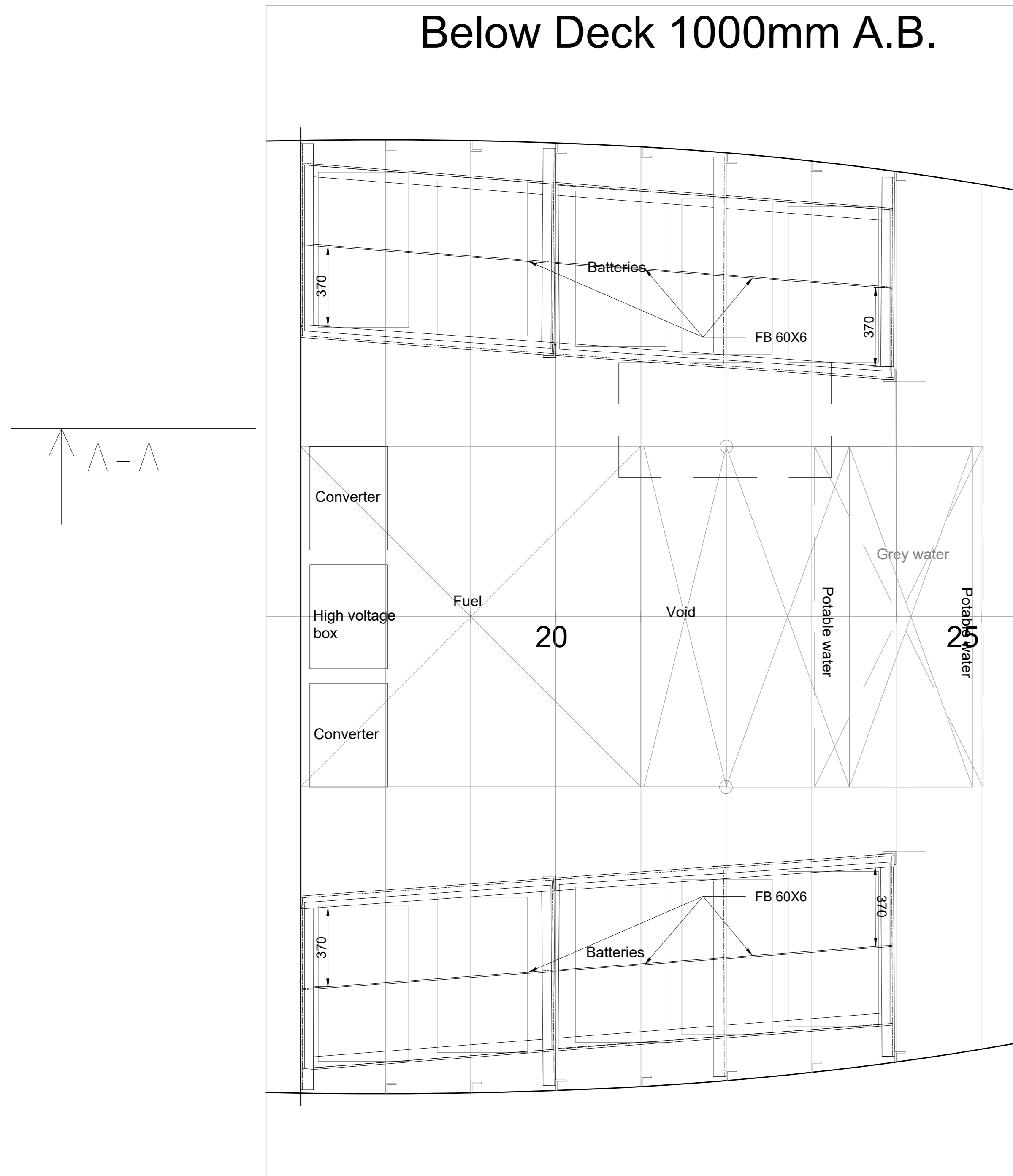
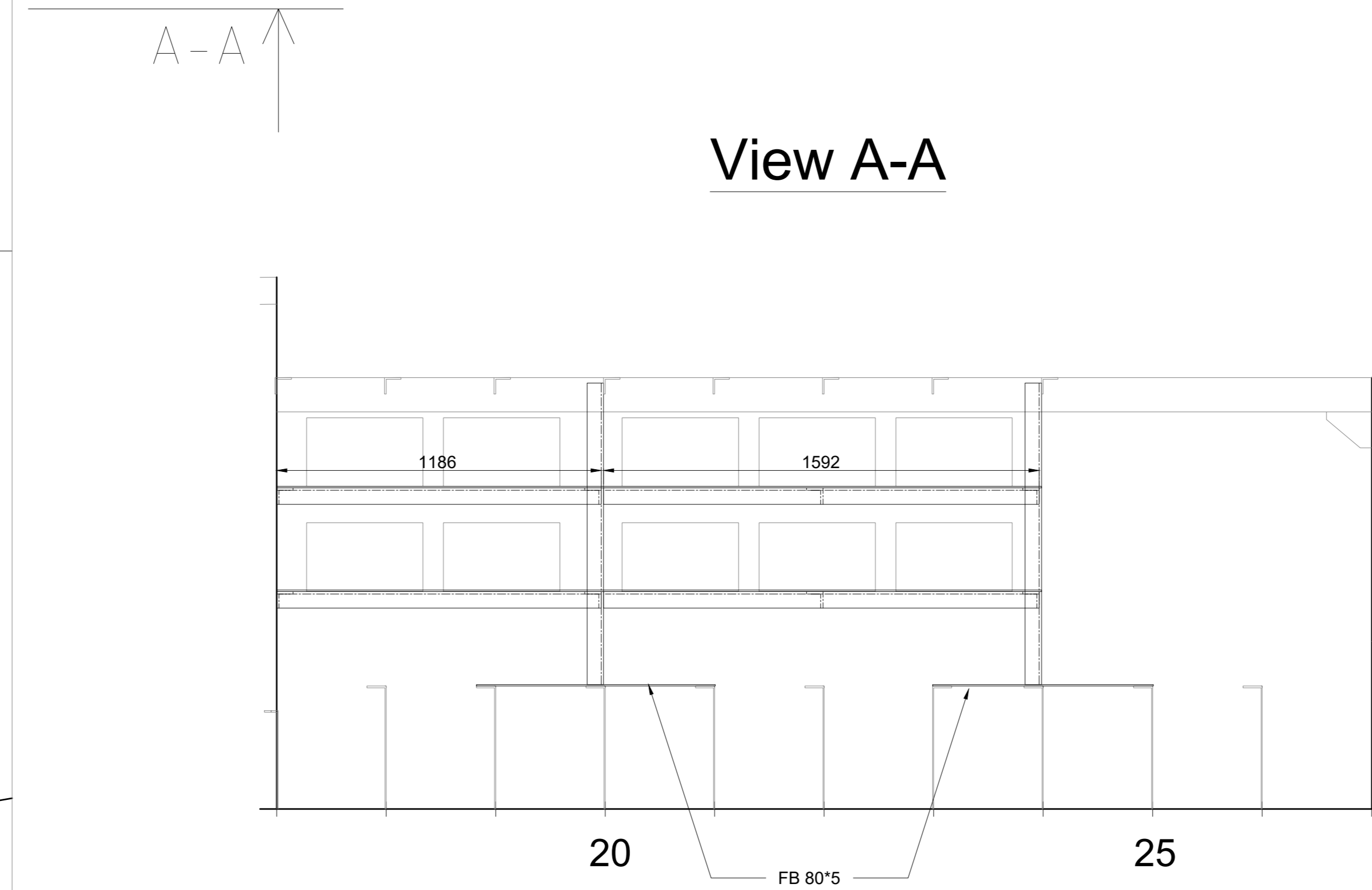


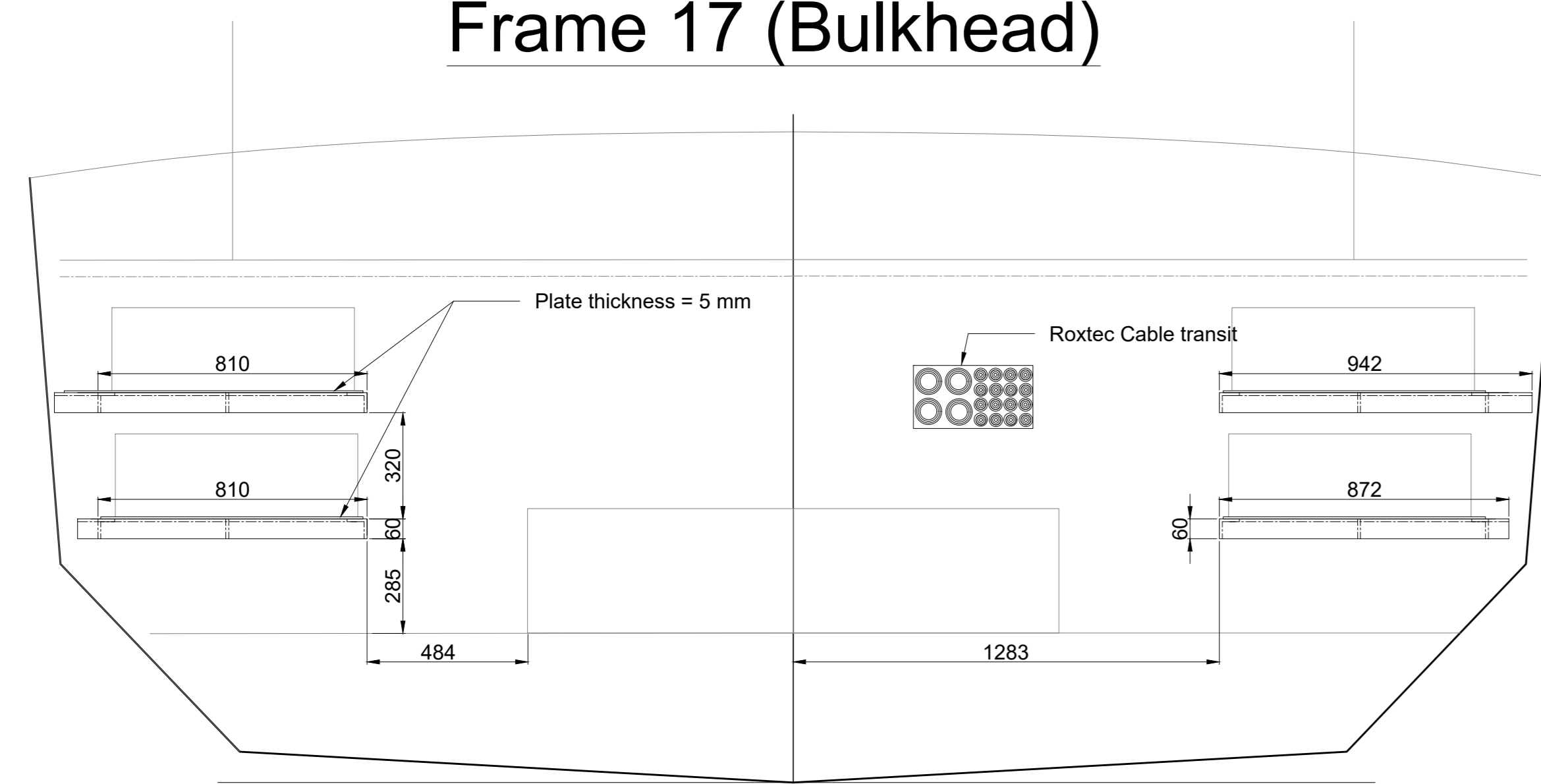
Below Deck 1000mm A.B.



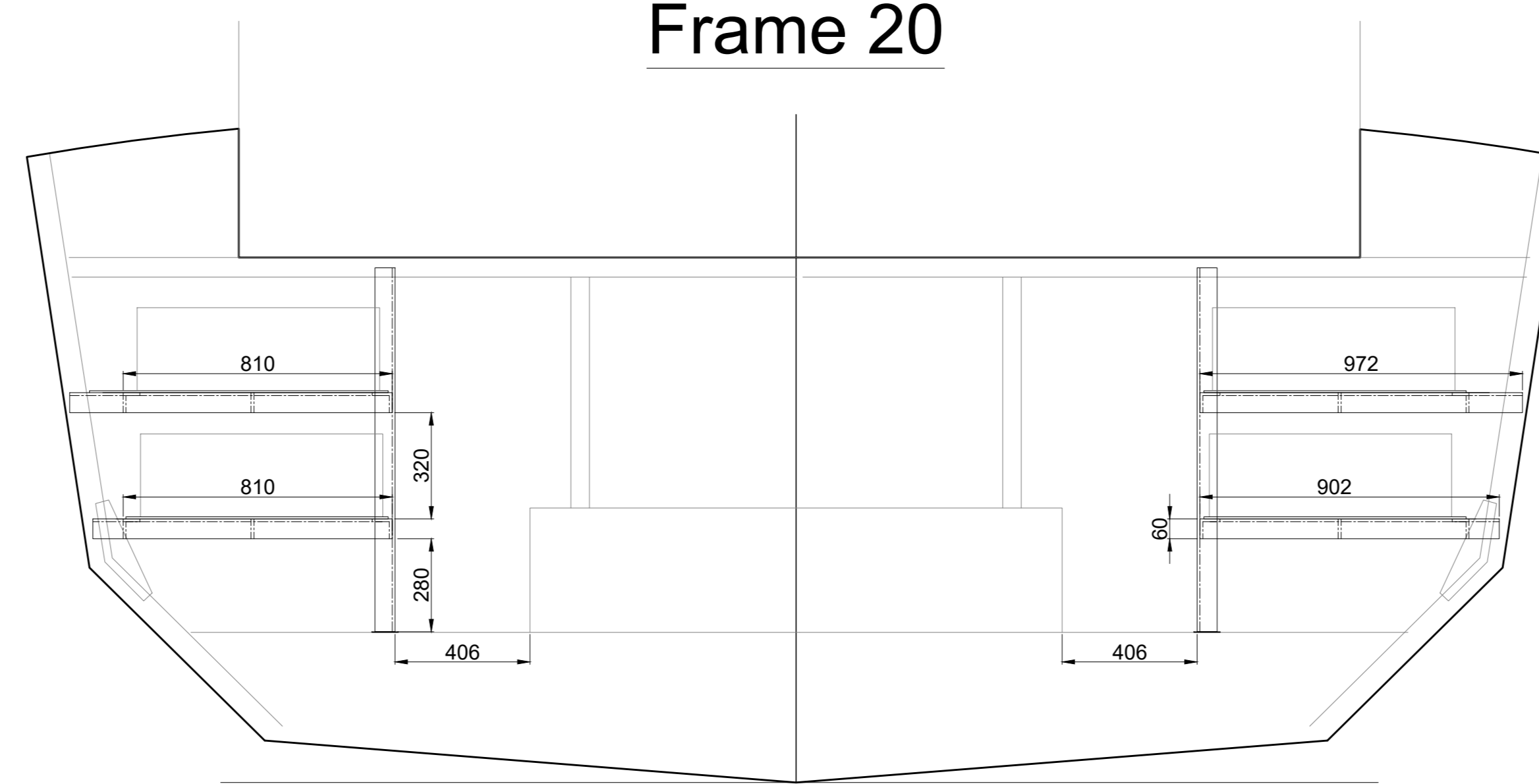
View A-A



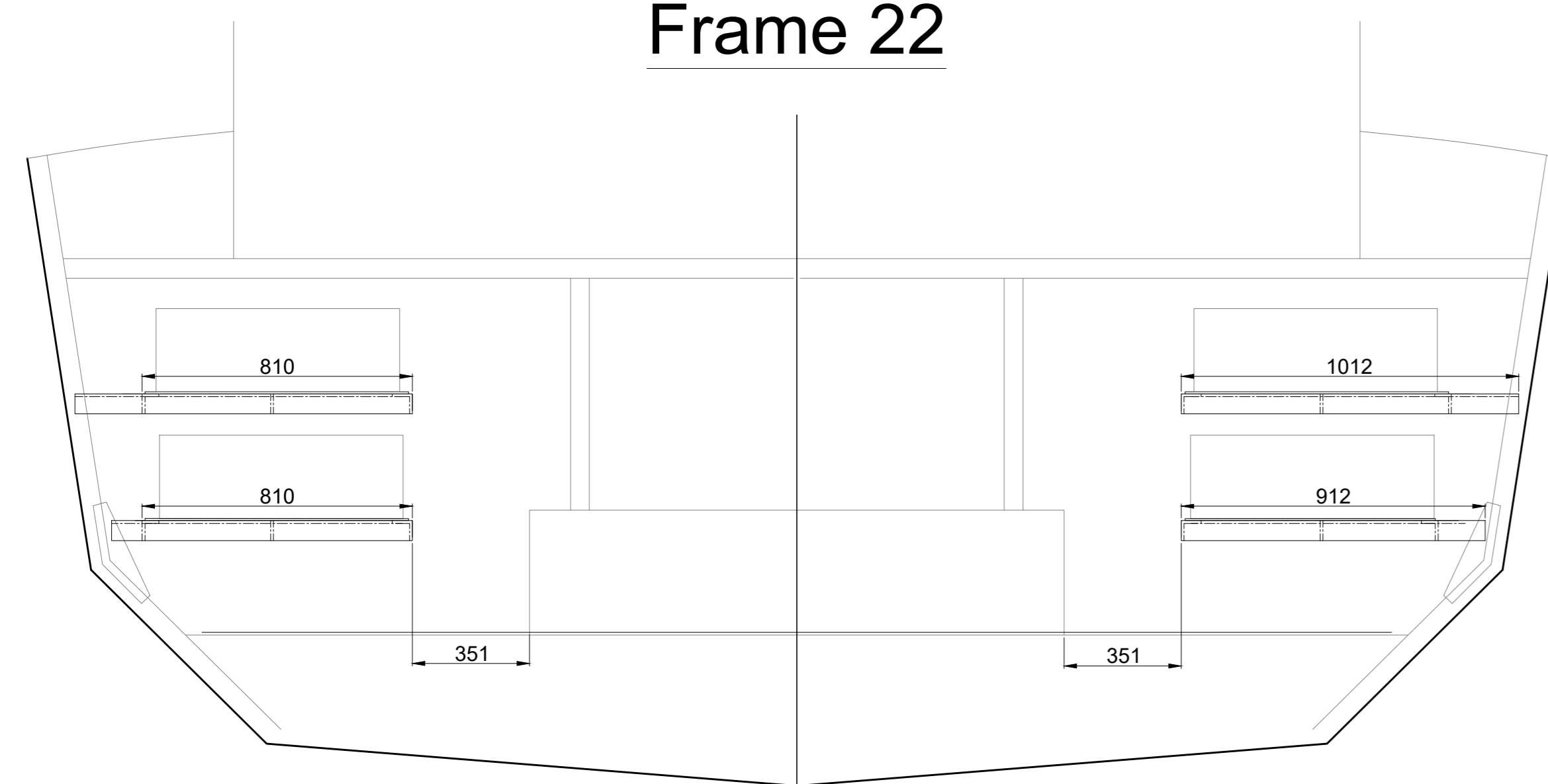
Frame 17 (Bulkhead)



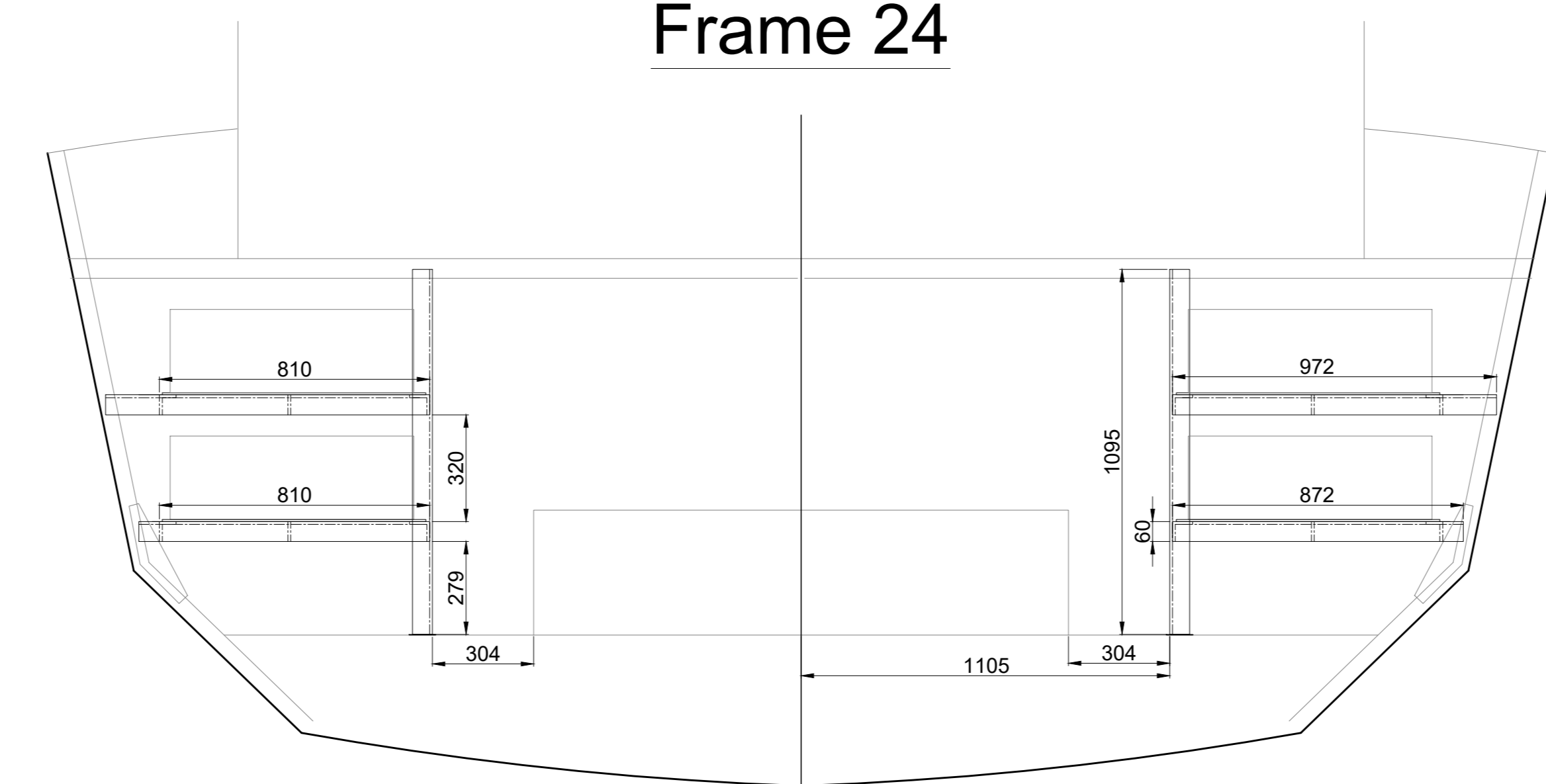
Frame 20



Frame 22



Frame 24



Reference drawings

- A3052-1001-Revxx-General arrangement

Notes

- In general, angle bars of 60X60X6mm are to be used unless otherwise specified.
- Due to inaccurate hull shape, transverse parts are to be checked/measured during the building process
- Measurements of one battery (LXBXH):
730X425X250 mm
In total 20 x 90kg batteries will be installed.
Approx. 12 kWh per battery. (10 PS & 10 SB)
(More might be needed)

Havenschap 2

Main Particulars

Length o.a. (Loa)= 15.5 m
Breath o.a. (B)= 4.67
Depth (D)= 1.85 m
Draft (T)= 1 m

Vs = 5.4 kn
Vmax = 8.6 kn

REV	DATE	MADE BY	APPROVED BY	DESCRIPTION

CONOSHIP
All rights reserved. This document or any part thereof may not be made public or disclosed, copied or otherwise reproduced or used in any form or by any means, including, but not limited to, use for the design and manufacturing of identical, similar or derived designs, nor identical, similar or derived documents and specifications, without prior written consent of Conoship International B.V.
P.O. Box 8029 - GRONINGEN - THE NETHERLANDS

DRAWING NO. **A3052-2072**

DESCRIPTION **Foundation battery stack**

SCALE	SIZE	YARD NO.	VERSION	SHEET:
1:15	A0	A3052	xx	1-1
DRAWN BY:	DATE:	APPROVED BY:	DATE:	
PV		RTH		