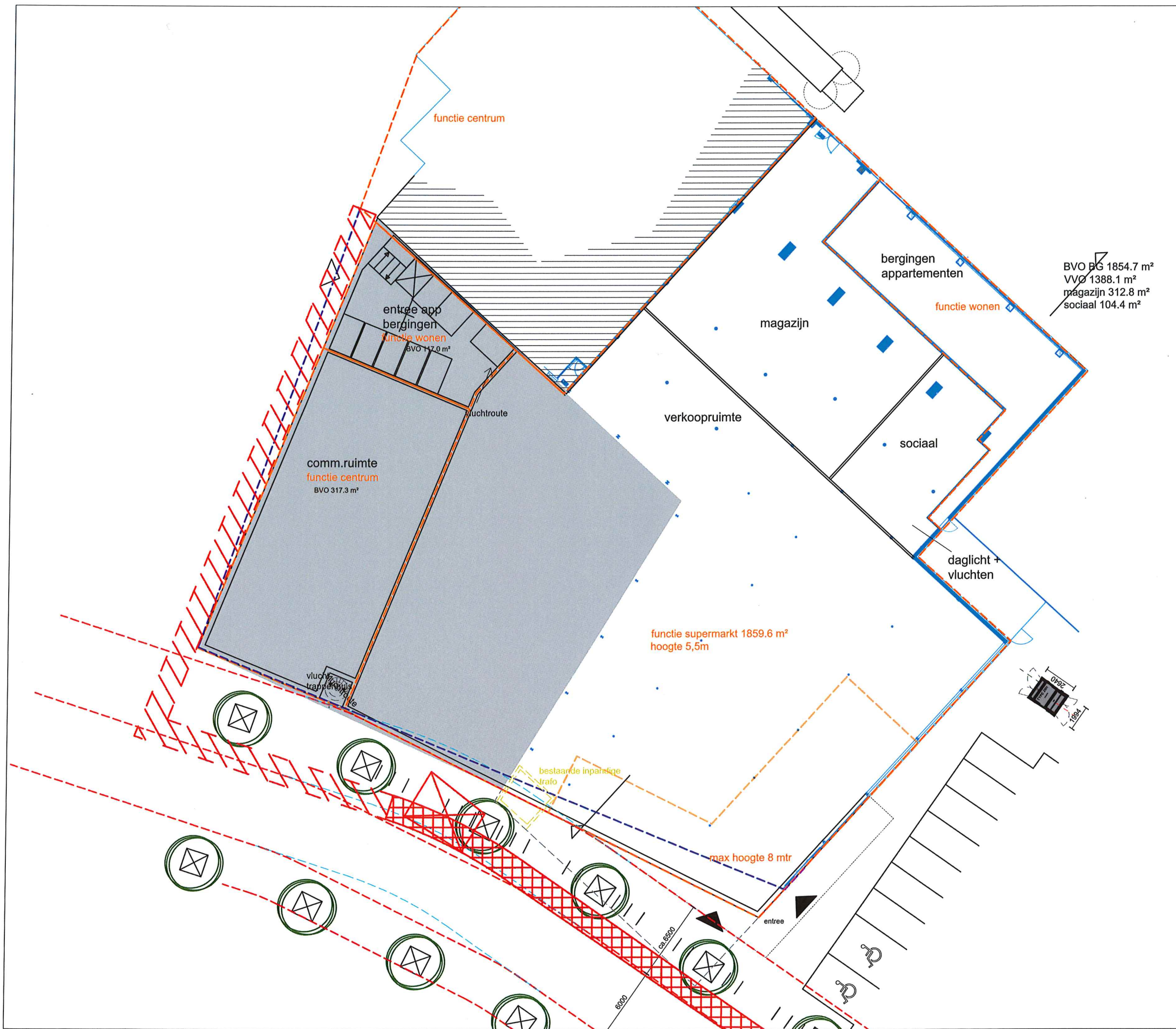


KHV ARCHITECTEN

■ Korfer / Ter Horst / De Velde Architecten

onderwerp	Situatie	schaal	1:500
	Nieuw	formaat	A3
projectnr.	K231162	datum	15-1-2024
tekeningnr.	IH -1	laatste wijz.	26-2-2024



BVO BG 1854.7 m²
 VVO 1388.1 m²
 magazijn 312.8 m²
 sociaal 104.4 m²

comm.ruimte
 functie centrum
 BVO 317.3 m²

entree app
 bergingen
 functie wonen
 BVO 117.0 m²

functie supermarket 1859.6 m²
 hoogte 5,5m

bergingen
 appartementen

functie wonen

magazijn

verkoopruimte

sociaal

daglicht +
 vluchten

bestaande inpandige
 trifo

max hoogte 8 mtr

entree

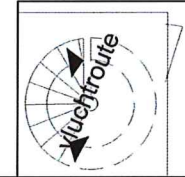
KHV
ARCHITECTEN

DD. 25-03-2024



bergingen

trap



commercieel 297 nvo

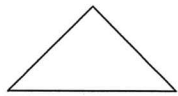
7000

7000

7000

8000

10300
12550



dak Jumbo

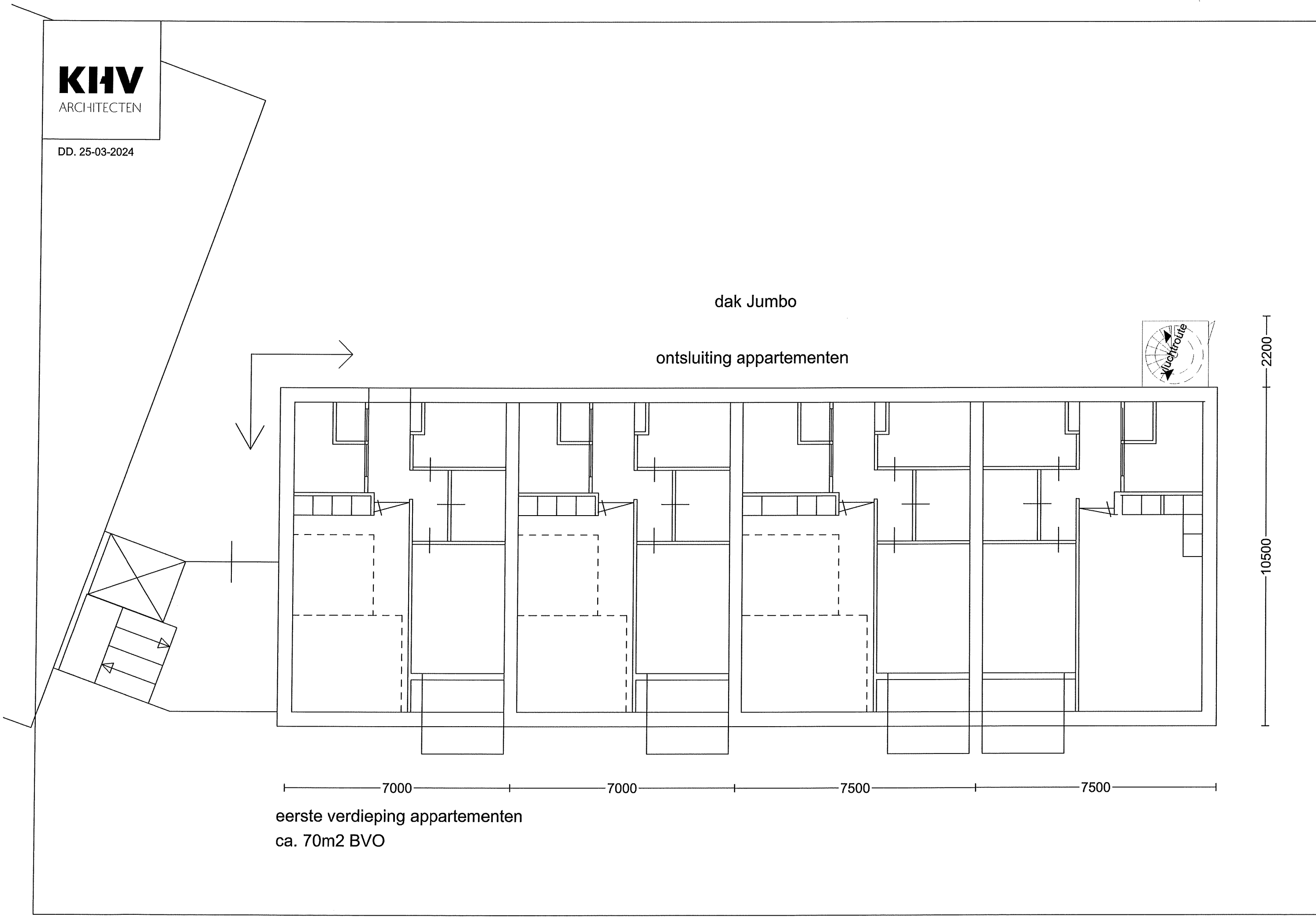
ontsluiting appartementen



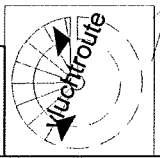
2200
10500

7000 7000 7500 7500

eerste verdieping appartementen
ca. 70m² BVO



galerij



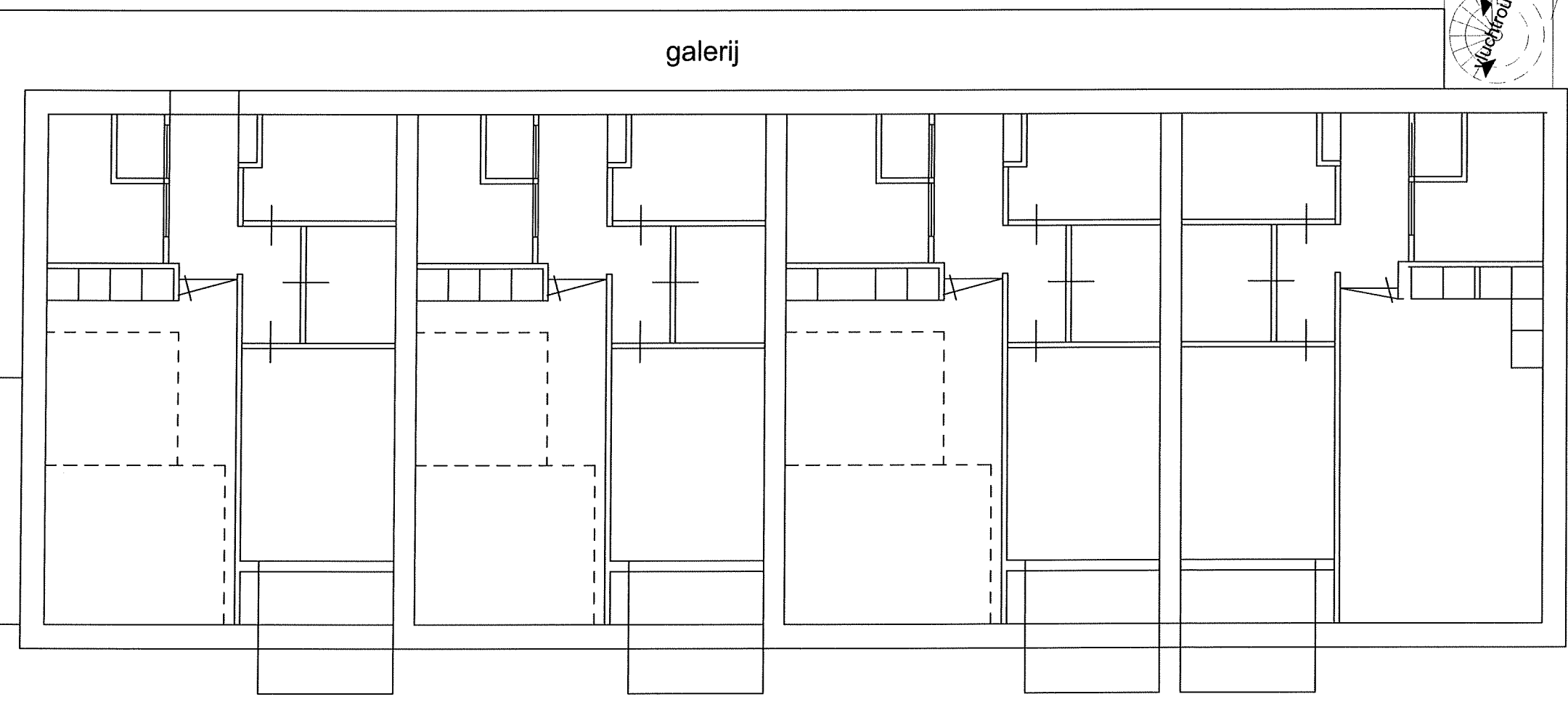
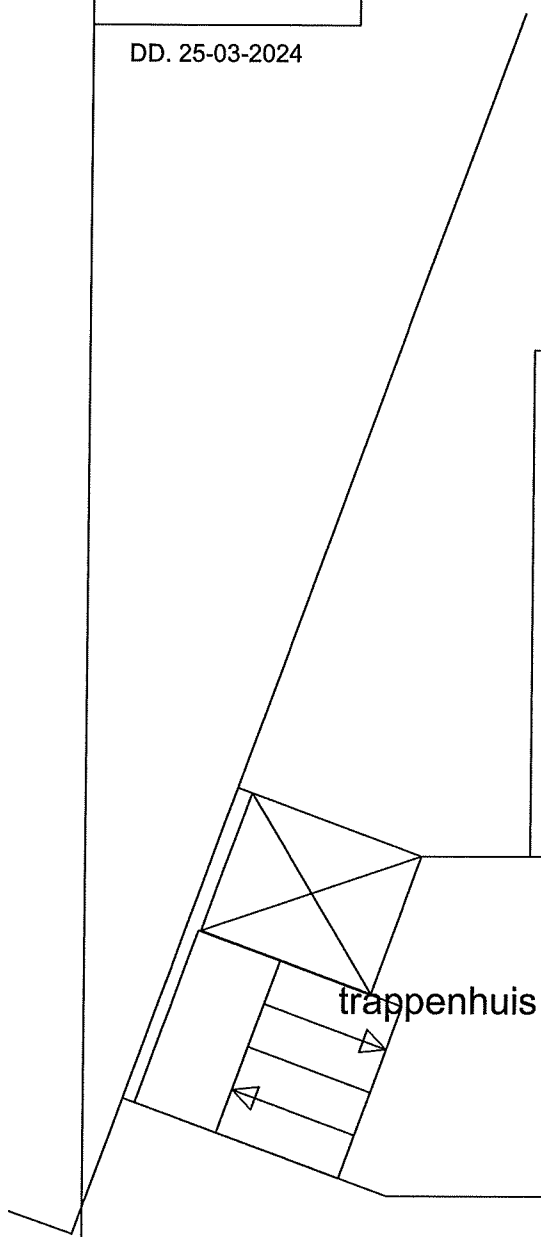
trappenhuis

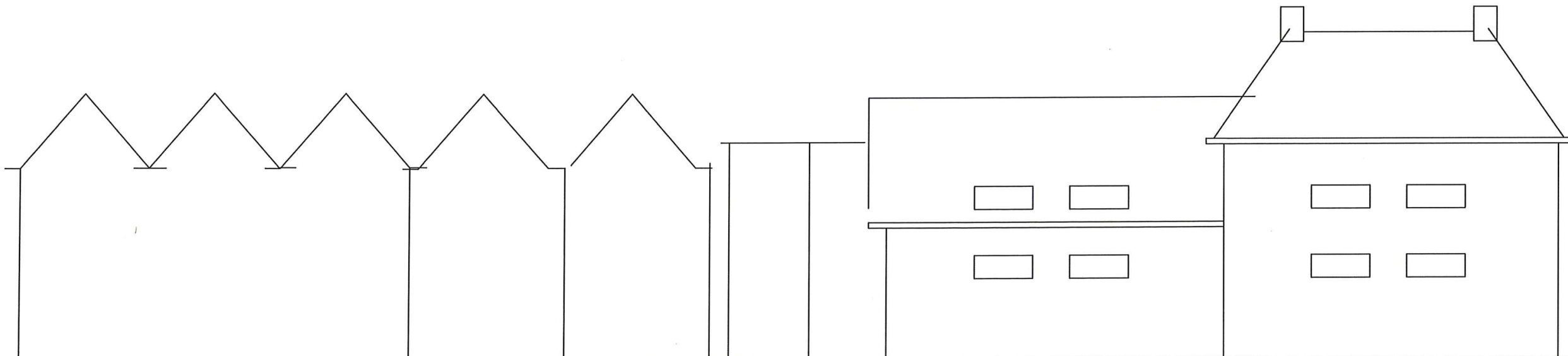
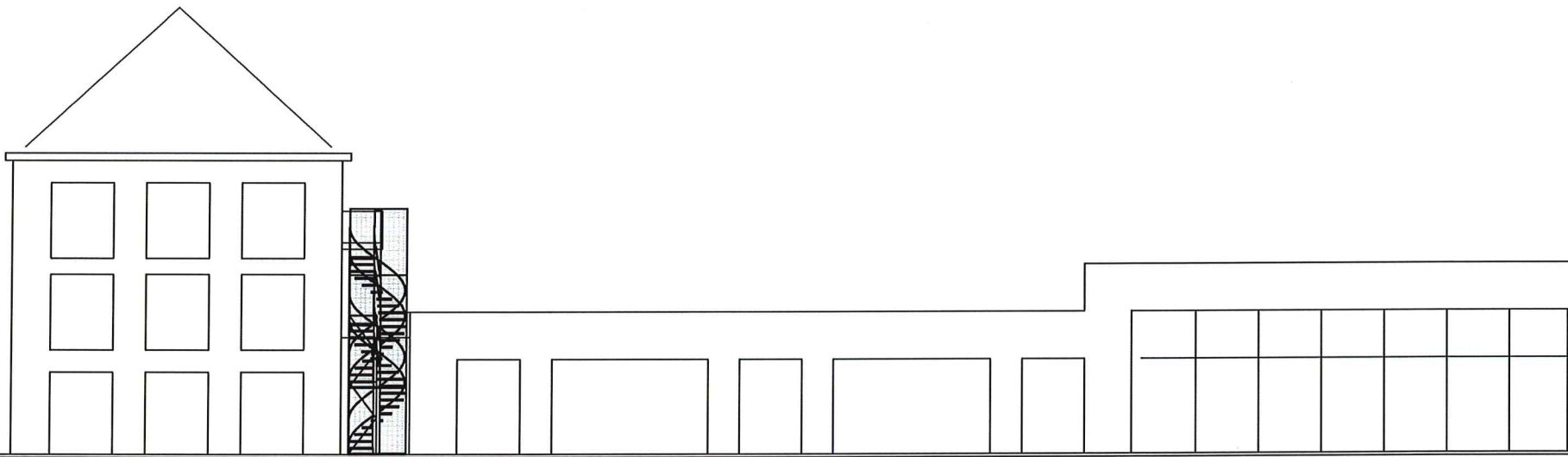
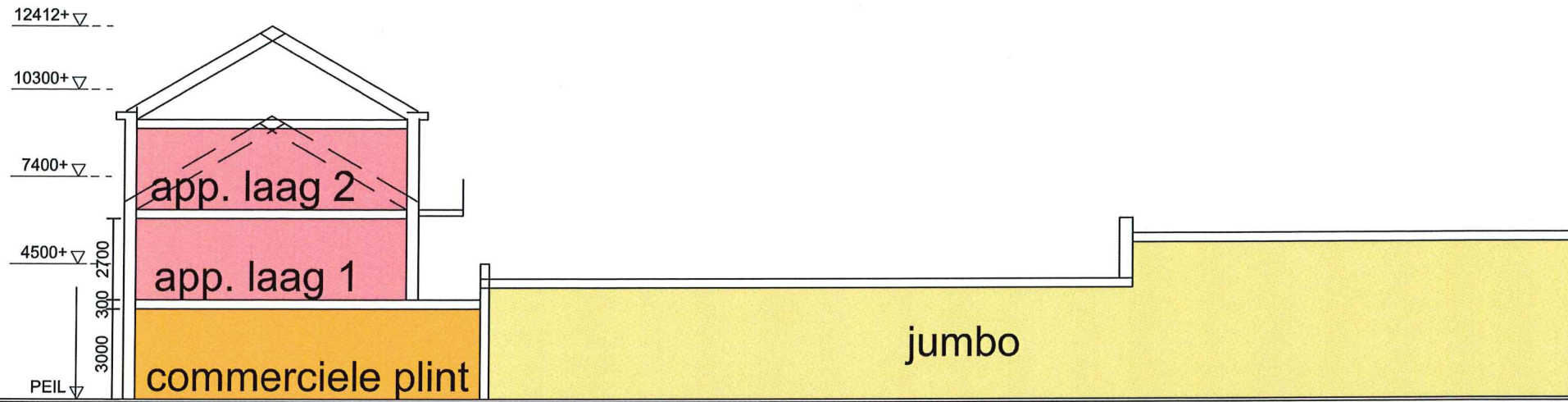
7000 7000 7500 7500

tweede verdieping appartementen

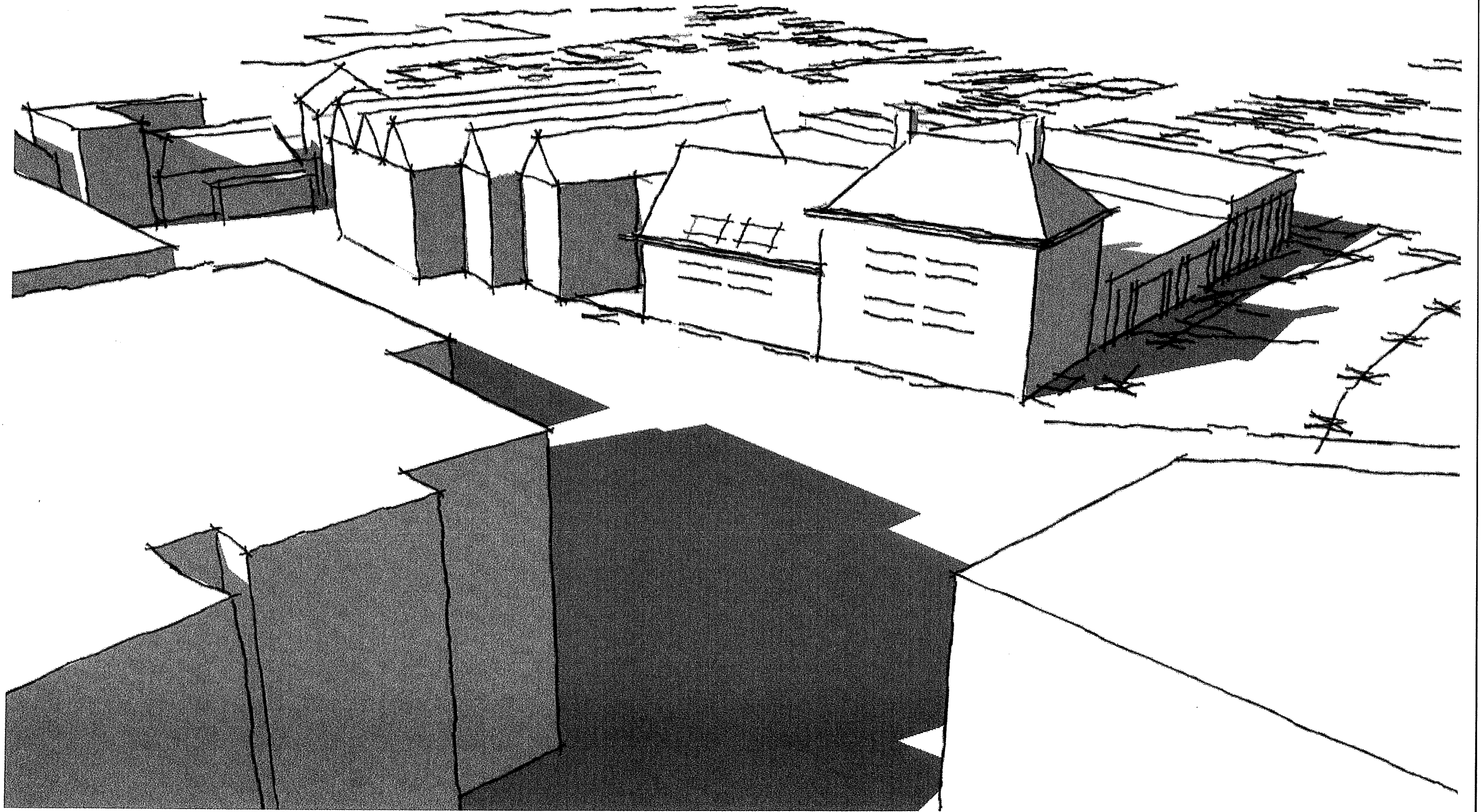
2200

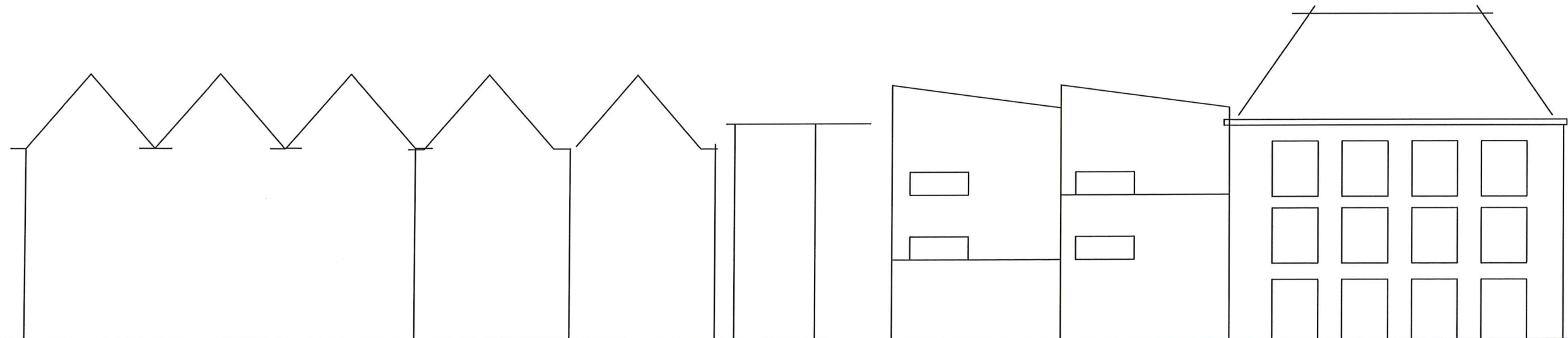
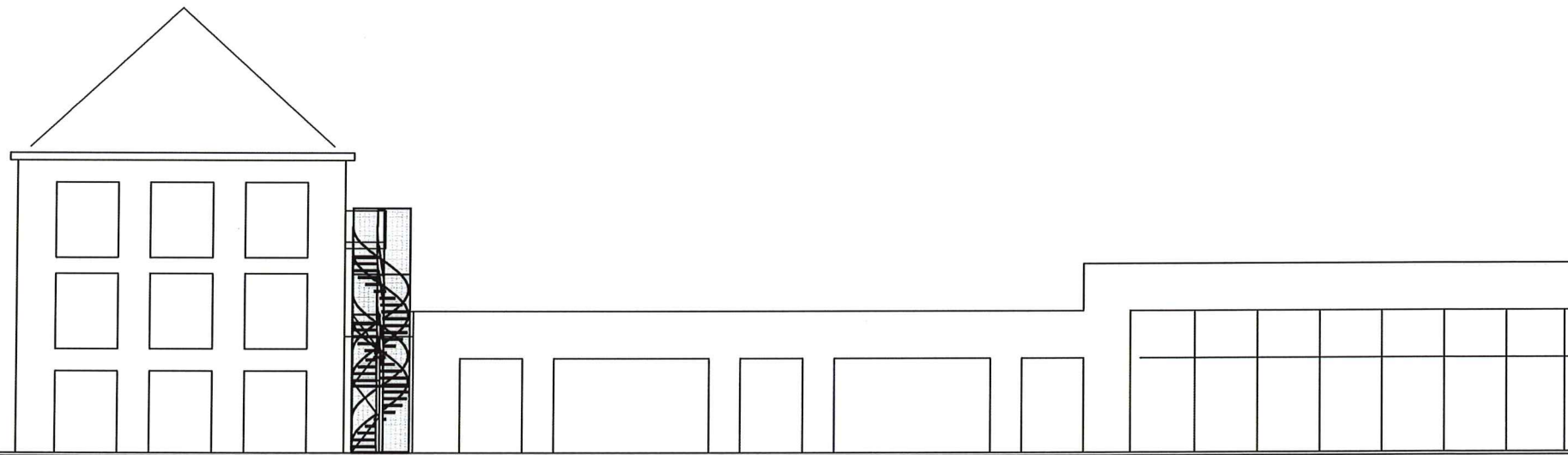
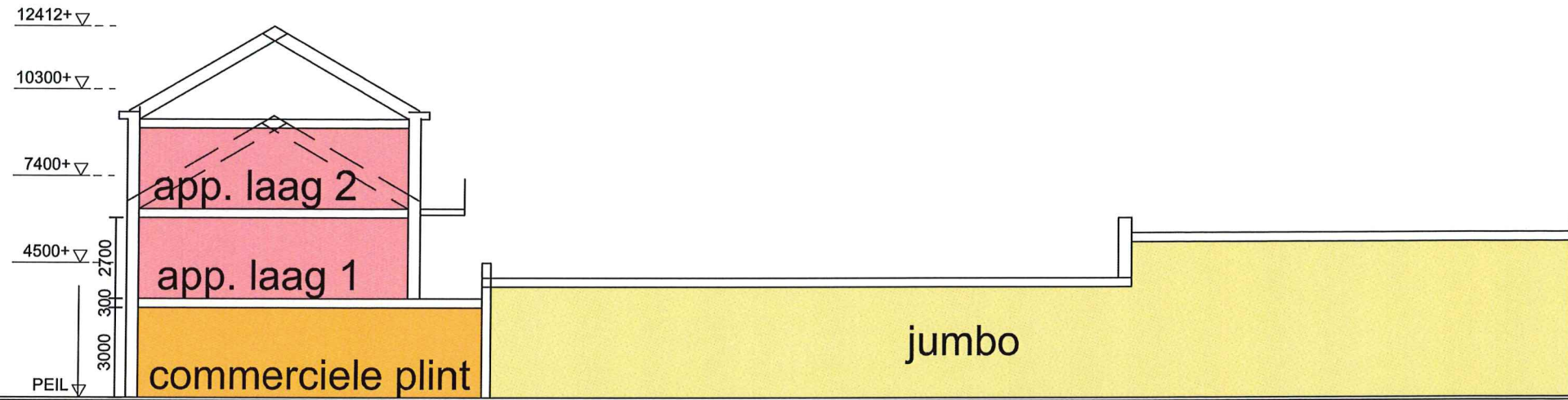
10500





PRINCIPE GEVEL 2 LAGEN EN KAP





PRINCIPE GEVEL 3 LAGEN EN KAP

