

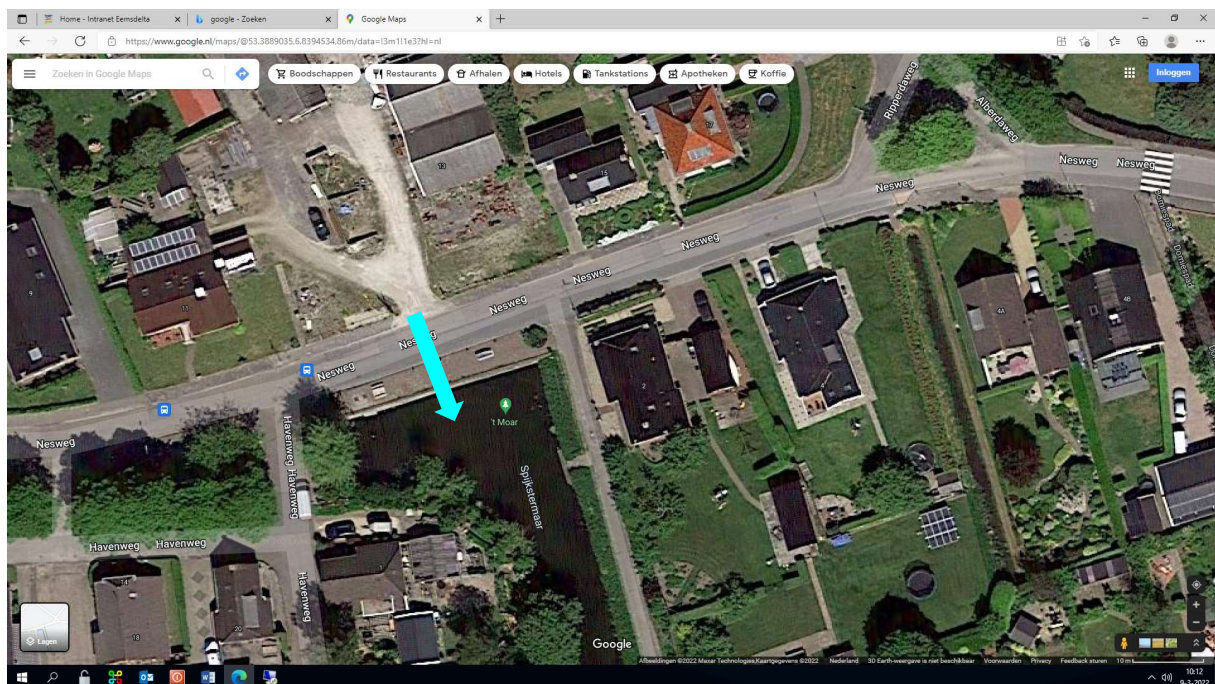
Waterinnamepunten gemeente Eemsdelta

Versie: 2

Datum: 19 augustus 2024

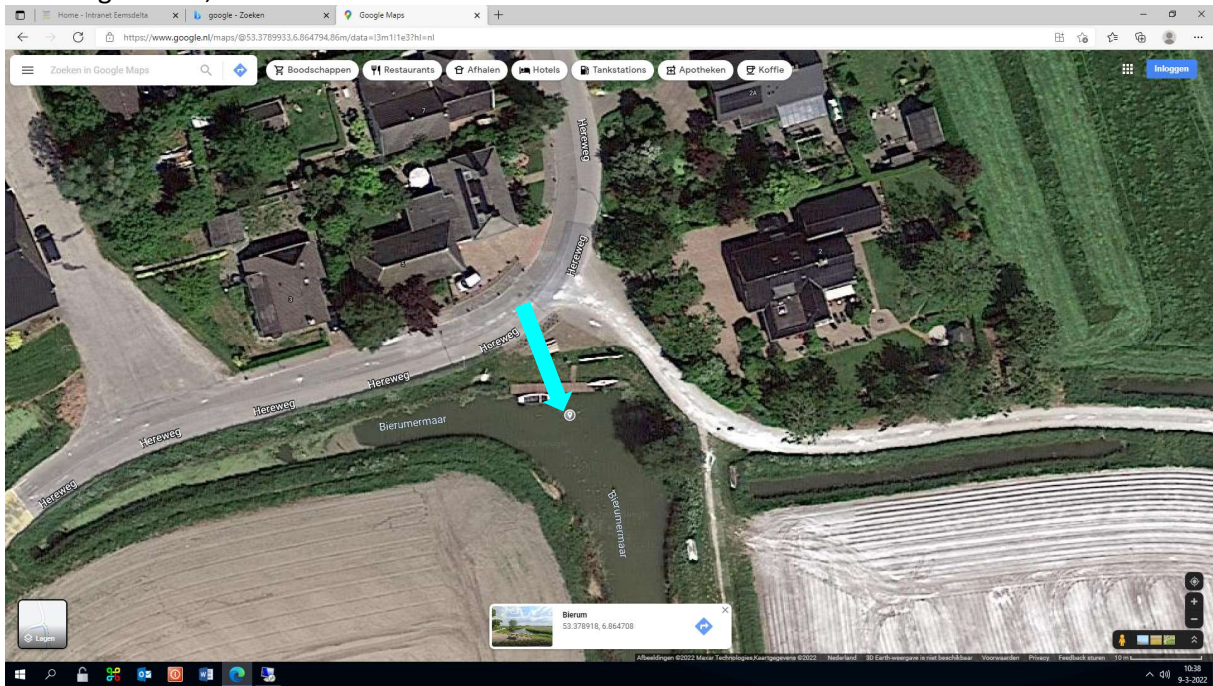
Spijk

Nesweg, Spijk: Spijksstermaar



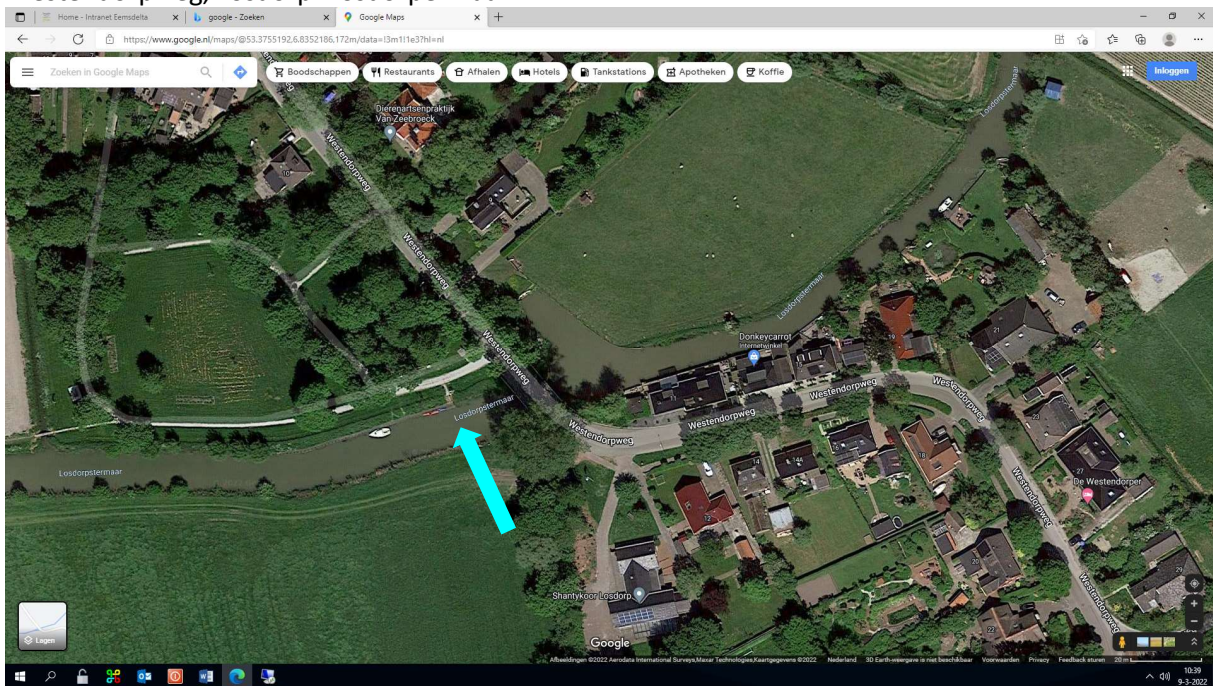
Bierum

Hereweg Bierum, Bierumermaar



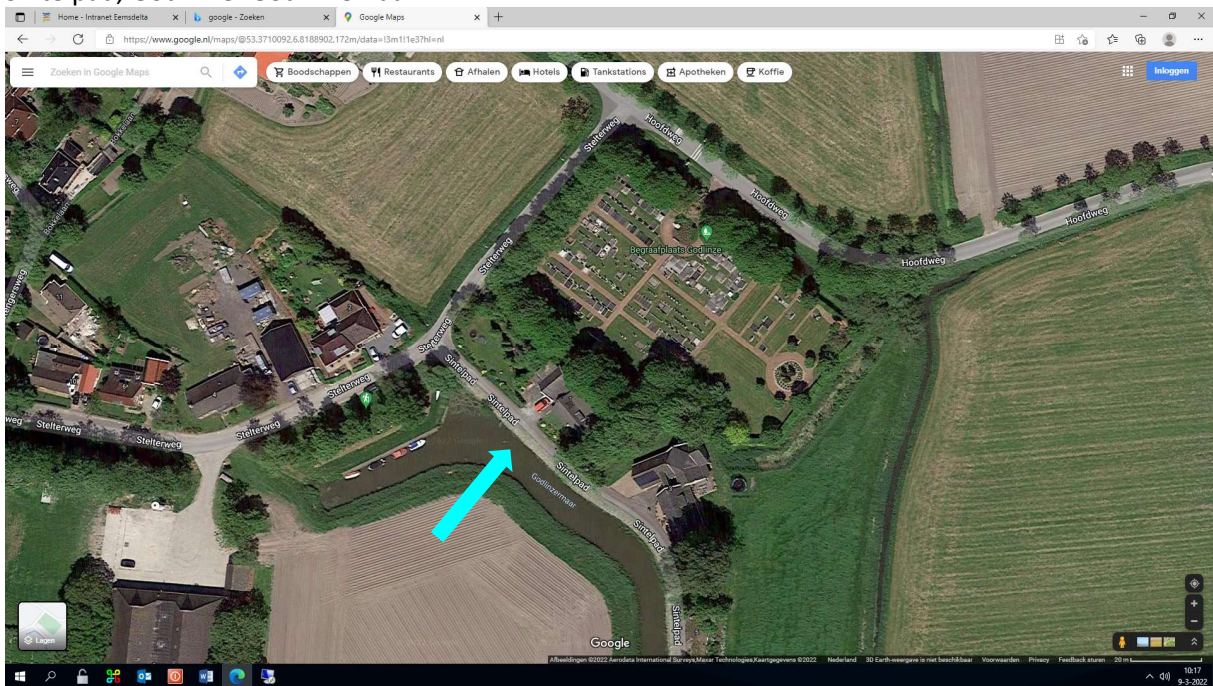
Losdorp

Westendorpweg, Losdorp: Losdorpermaar



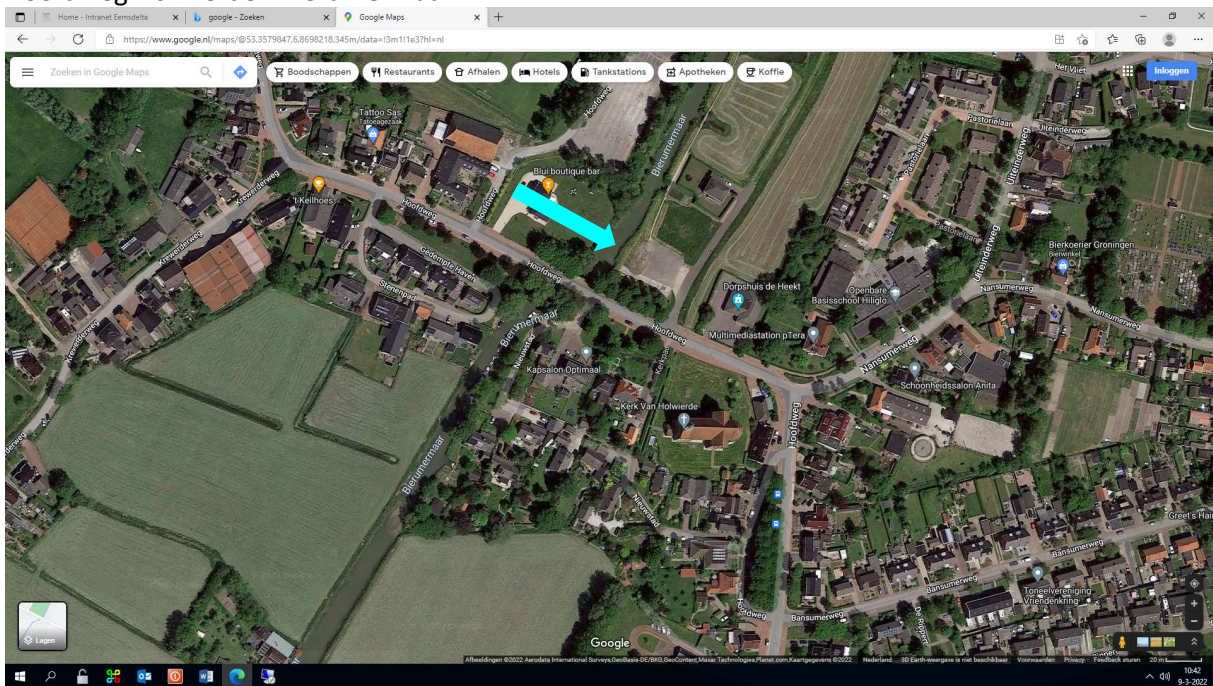
Godlinze

Sintelpad, Godlinze: Godlinzemaar



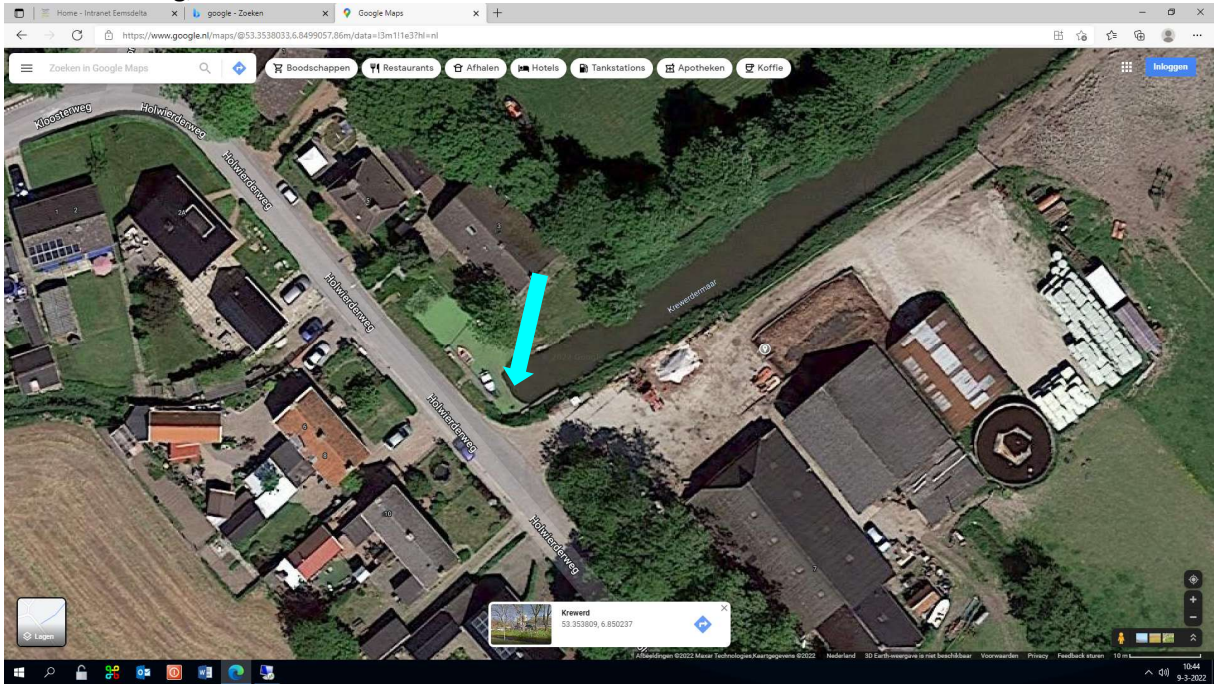
Holwierde en Nansum

Hoofdweg Holwierde - Bierumermaar



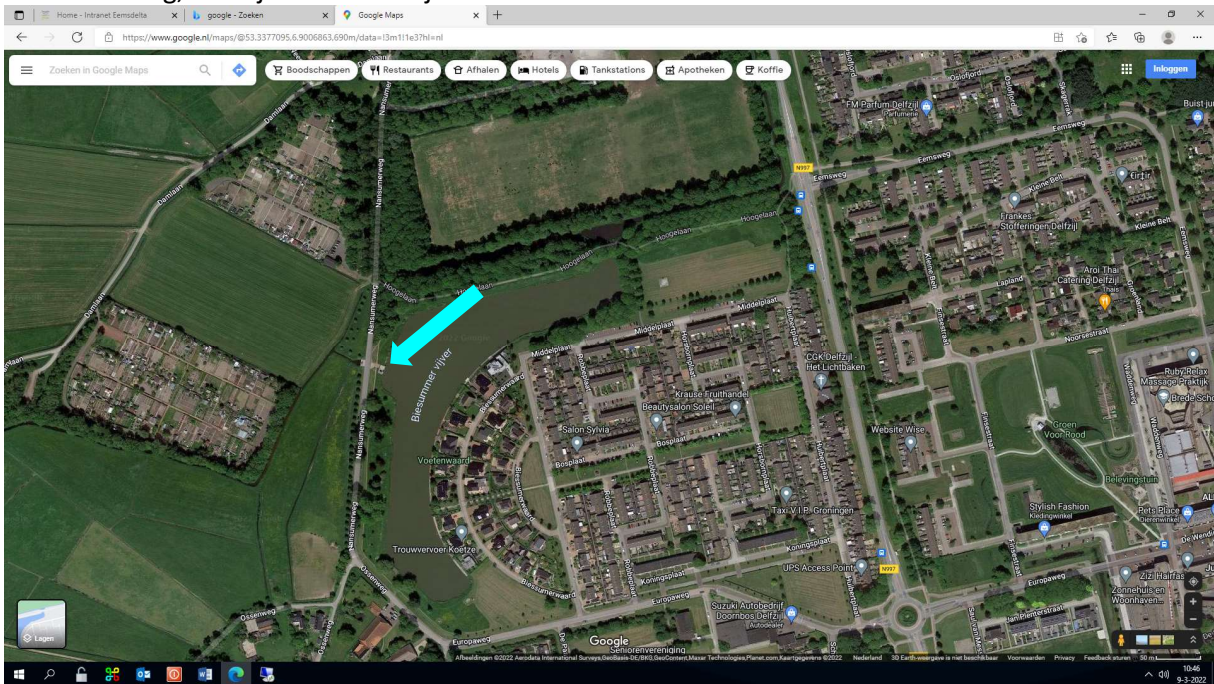
Krewerd

Holwierderweg, Krewerd: Krewerdermaar



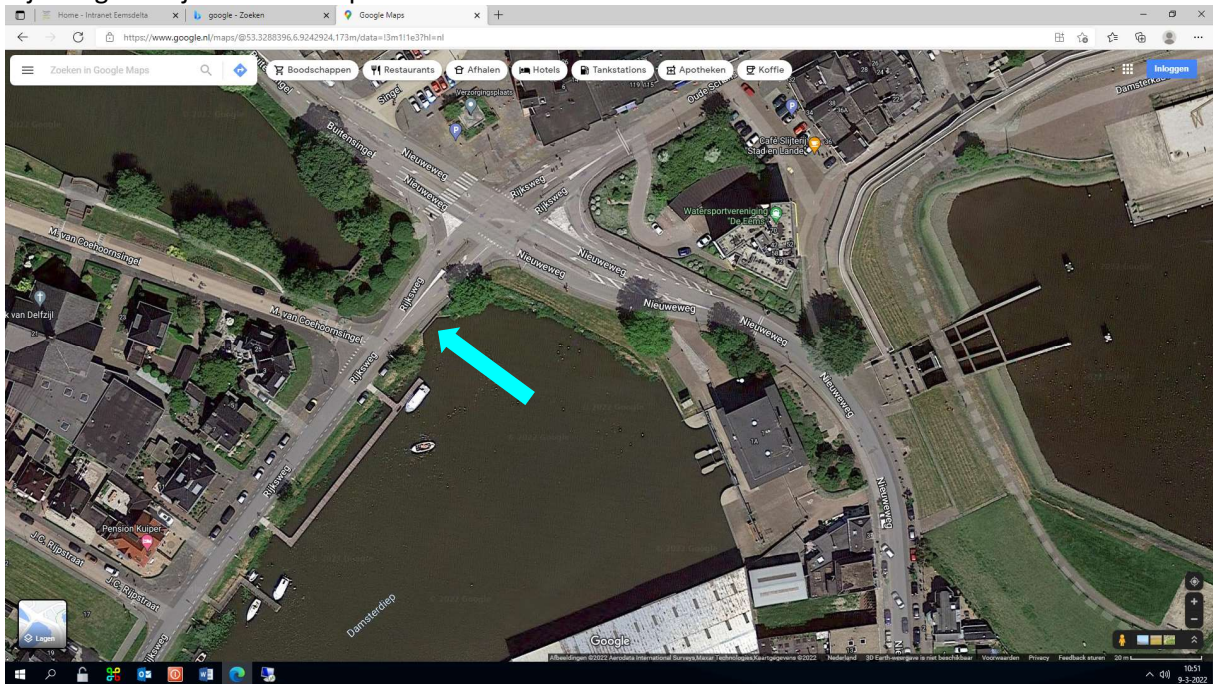
Delfzijl Noord

Nansumerweg, Delfzijl: Biesumer vijver



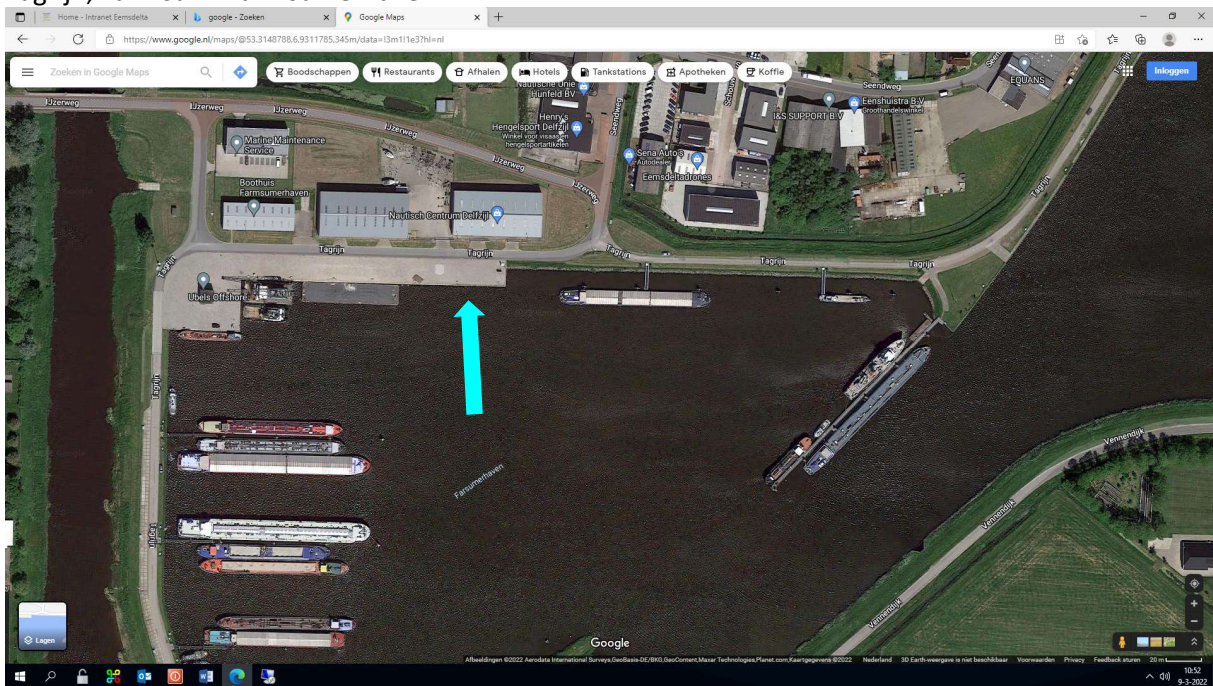
Delfzijl Midden

Rijksweg Delfzijl: Damsterdiep

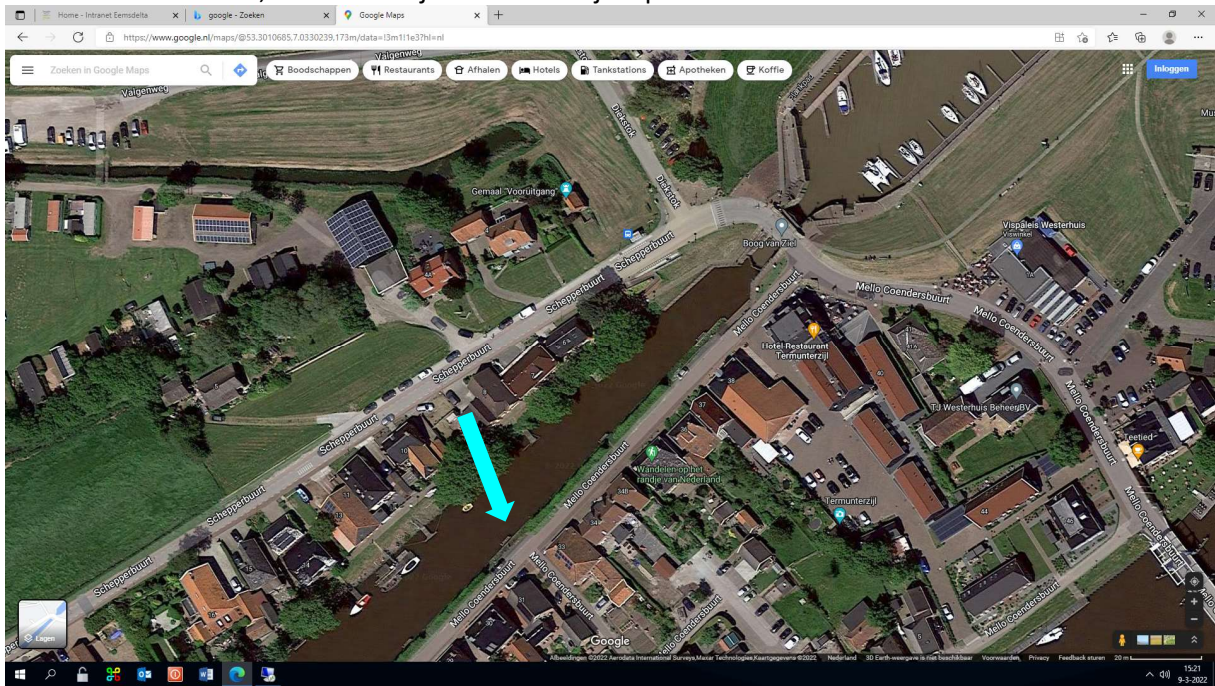


Farmsum

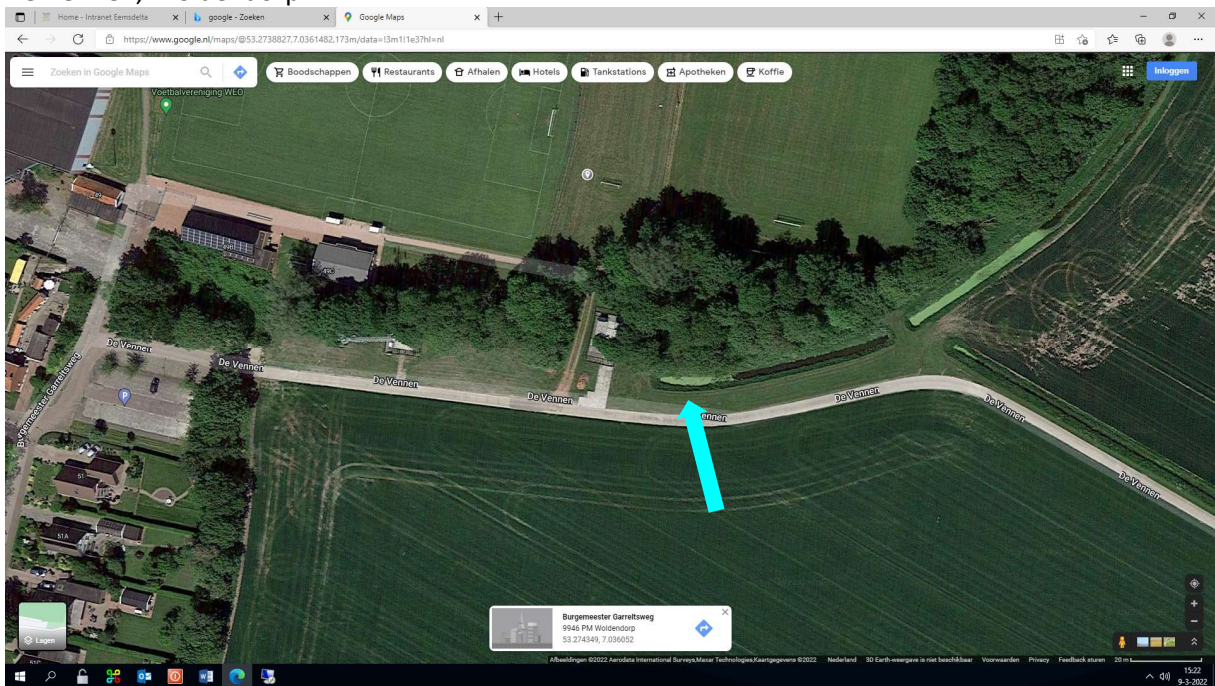
Tagrijn, Farmsum: Farmsumerhaven



Termunten, Termunterzijl, Borgsweer en Baamsum: Mello Coendersbuurt, Termunterzijl: Termunterzijldiep

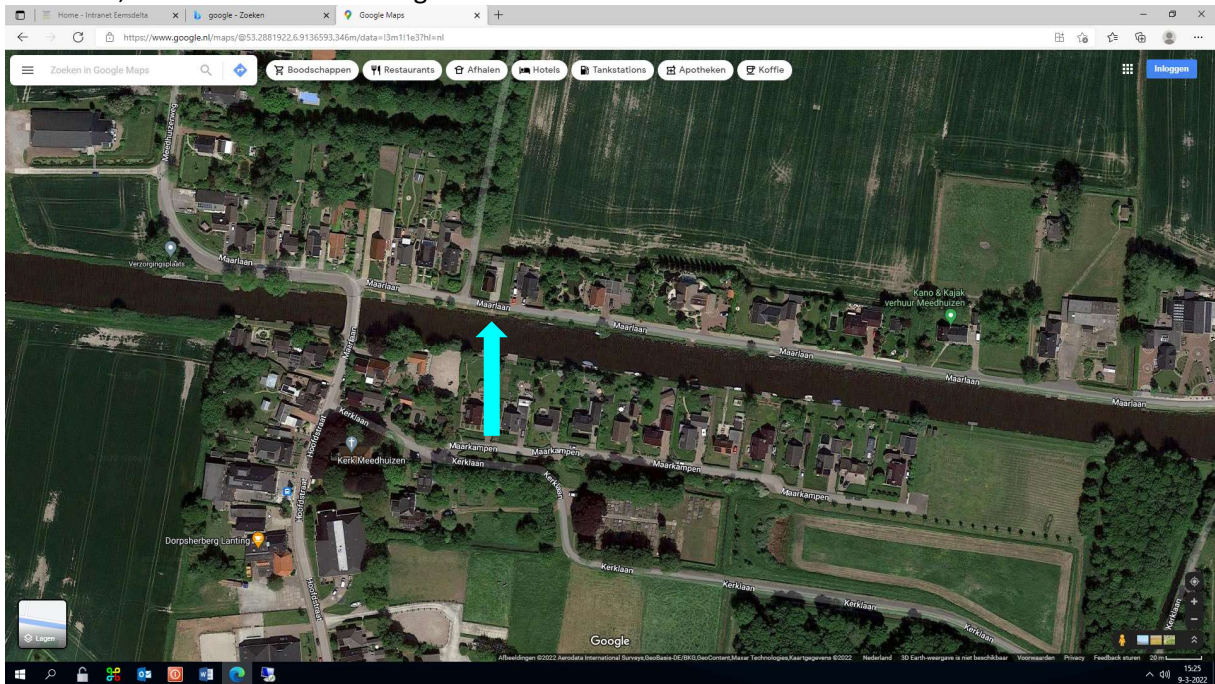


Woldendorp De Vennen, Woldendorp



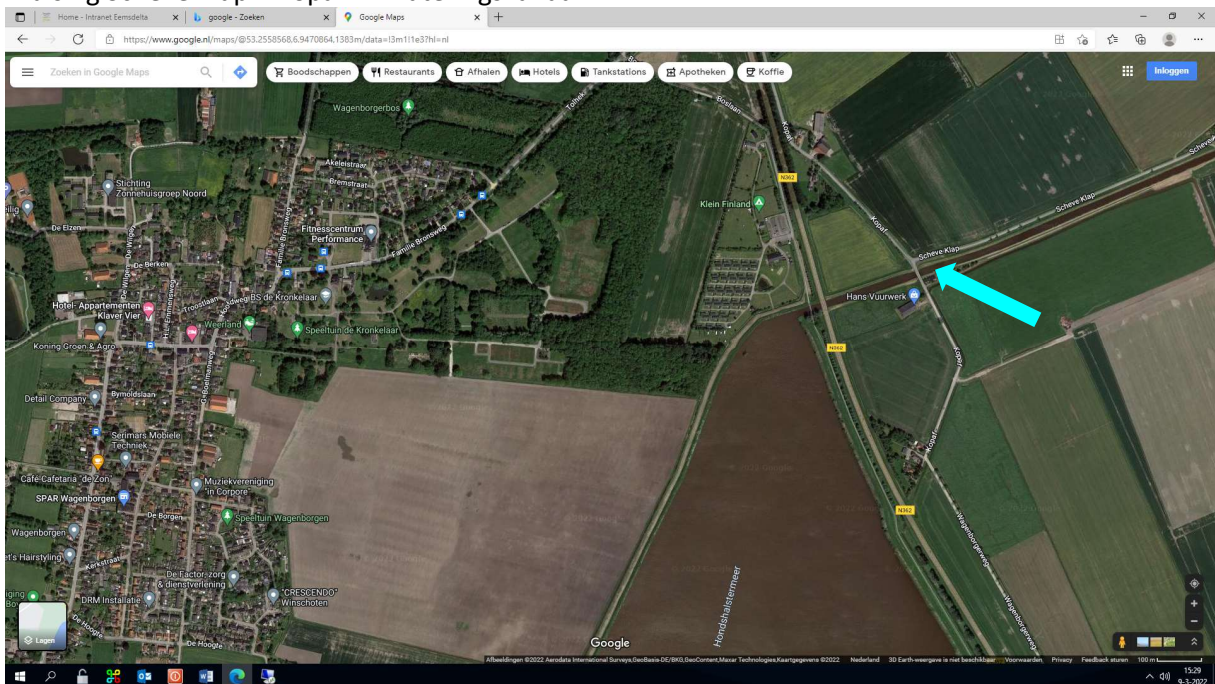
Meedhuizen

Maarlaan, Meedhuizen: Afwateringskanaal



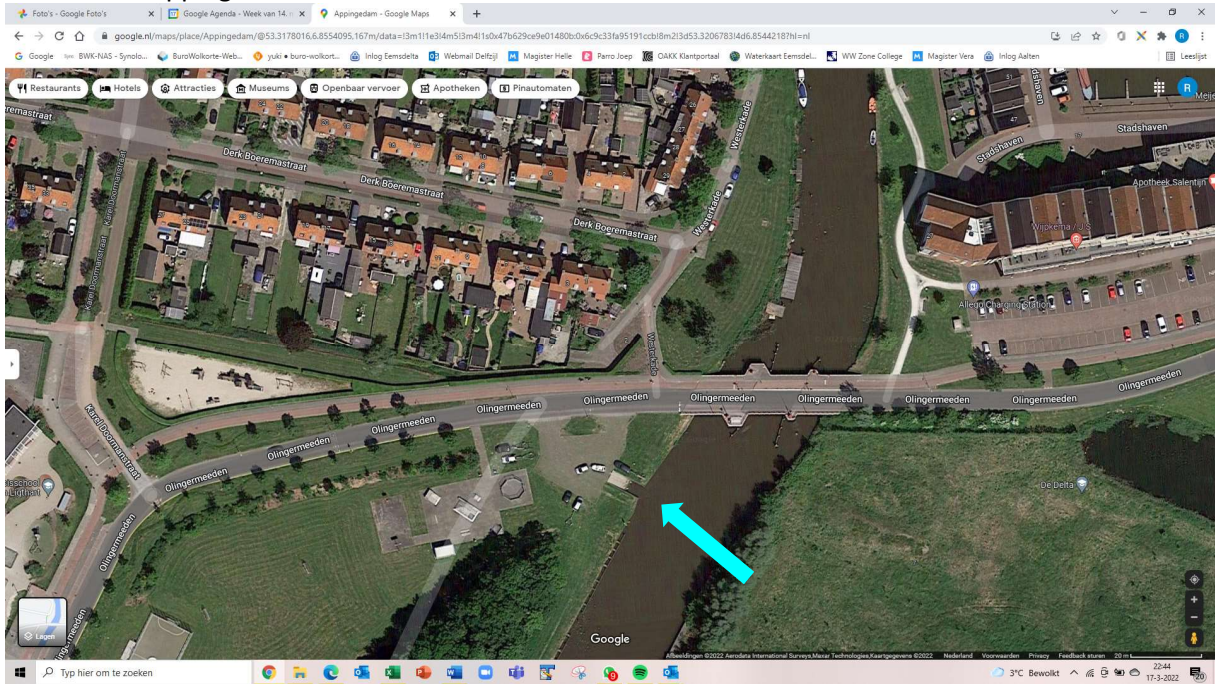
Wagenborgen

Kruising Scheve Klap – Kopaf: Afwateringskanaal



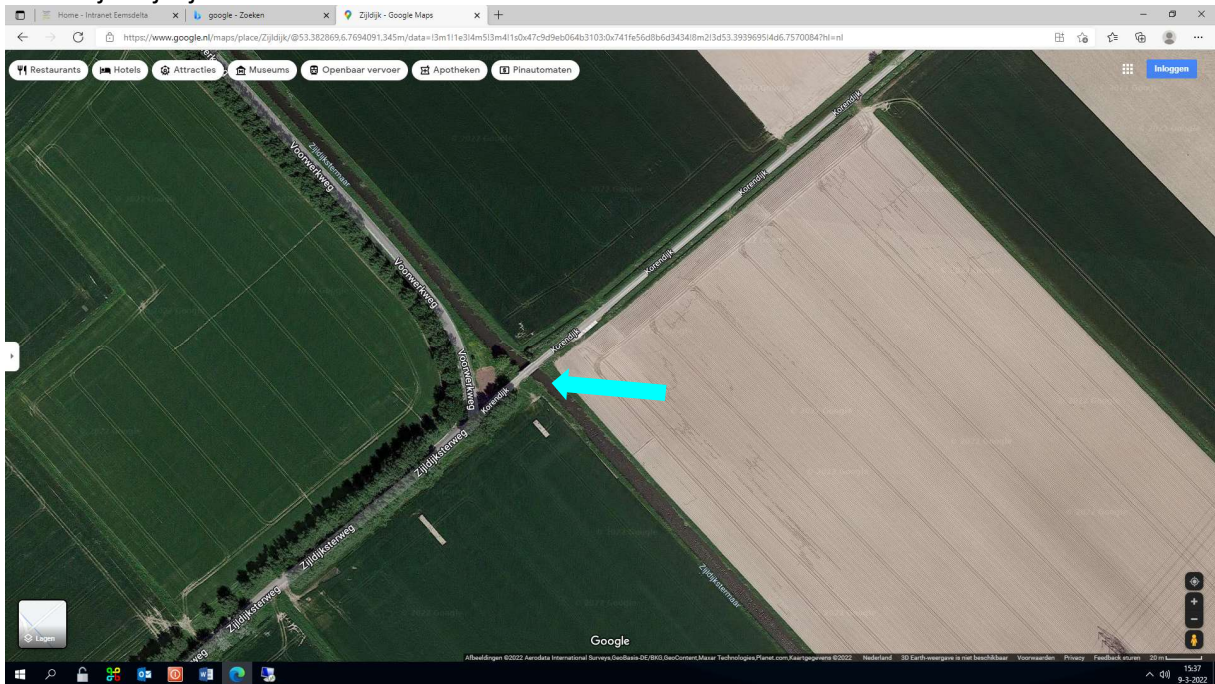
Appingedam

Stadshaven Appingedam: Passantenhaven



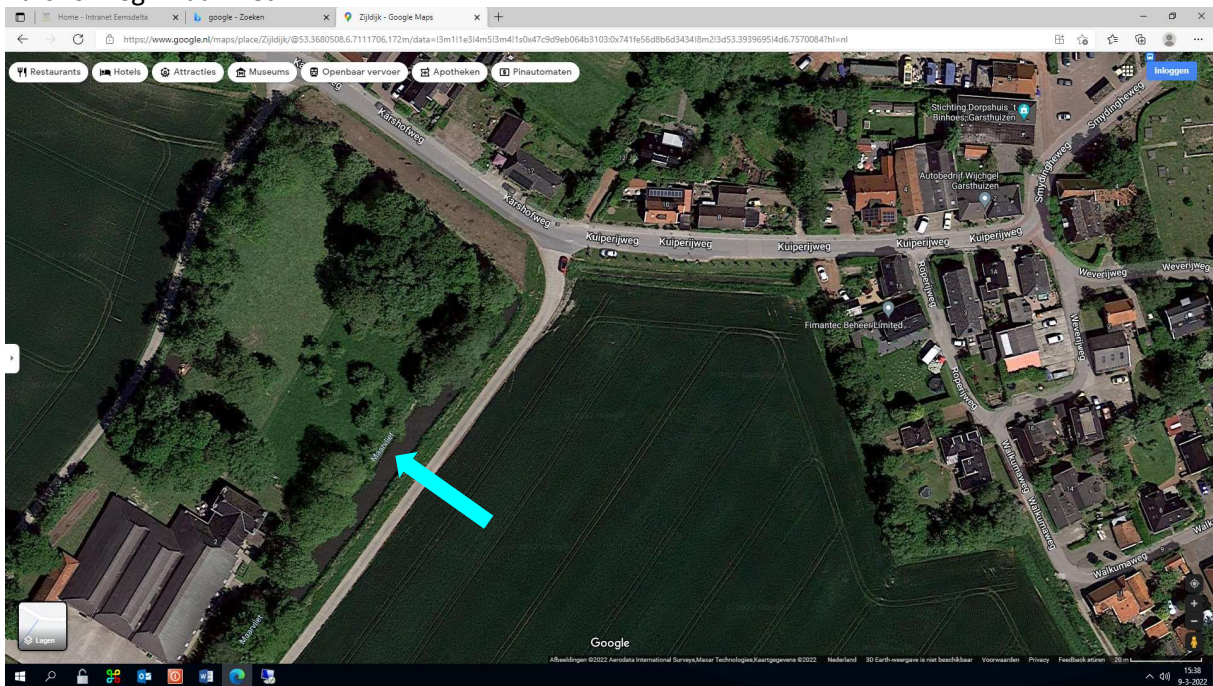
Zijldijk en 't Zandt

Korendijk: Zijldijkstermaar



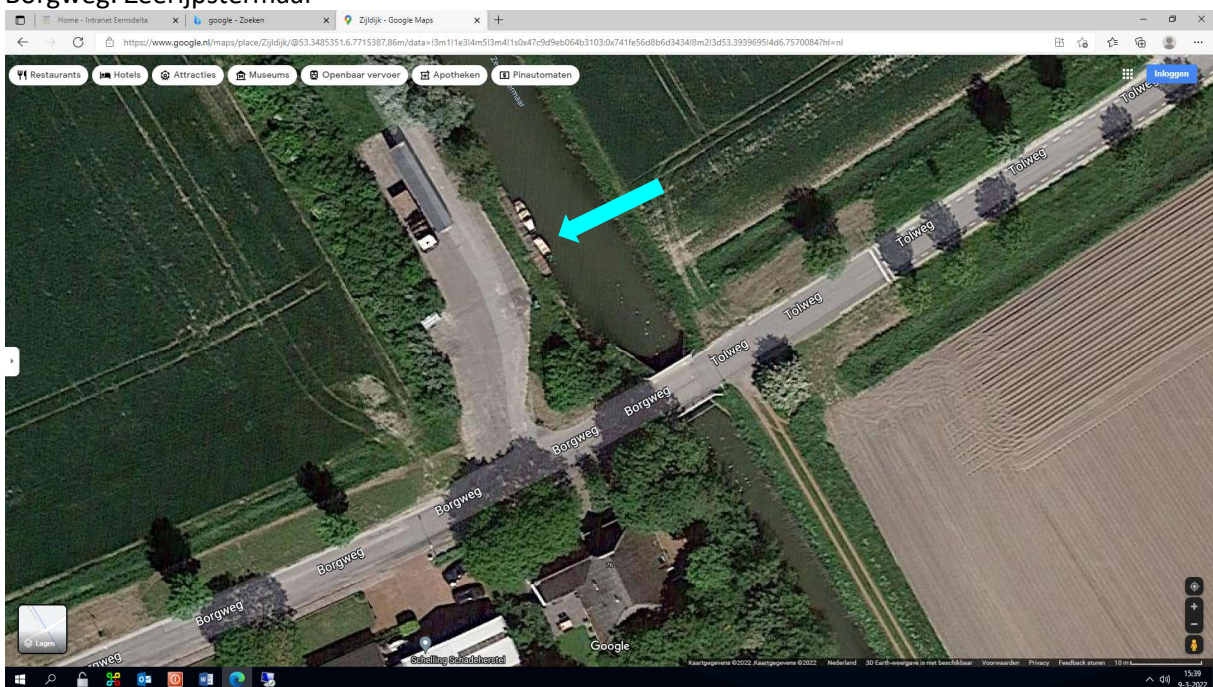
Garsthuizen

Karshofweg: Maarvliet

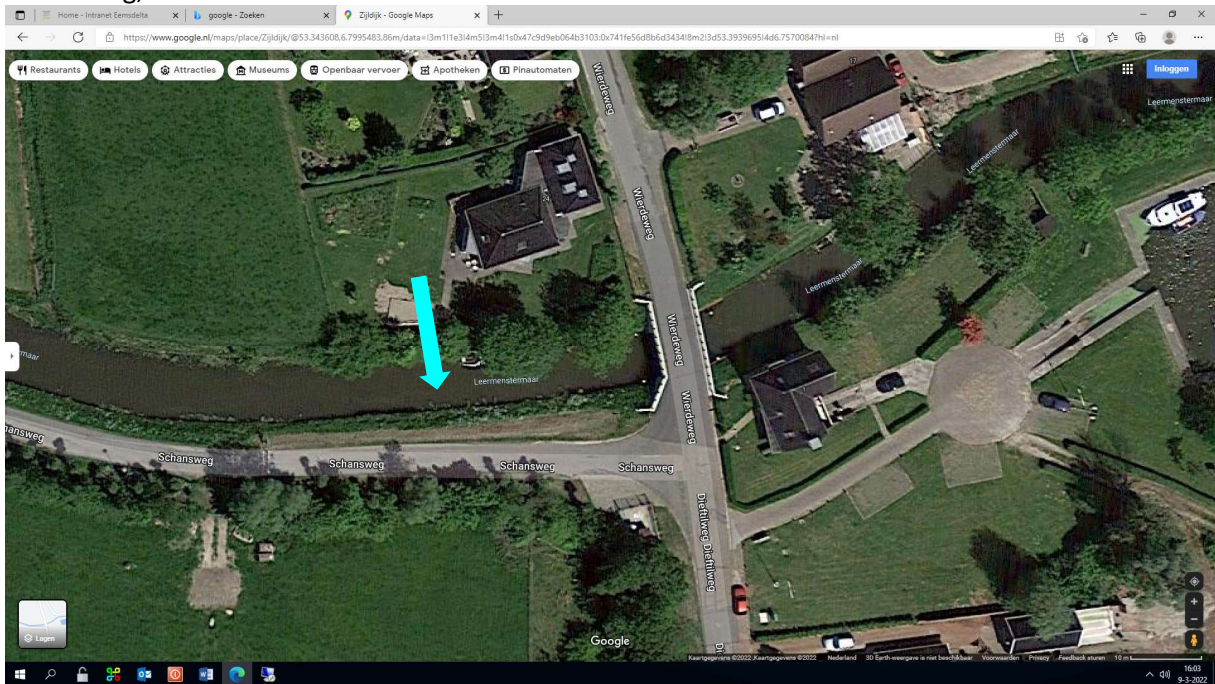


Zeerijp

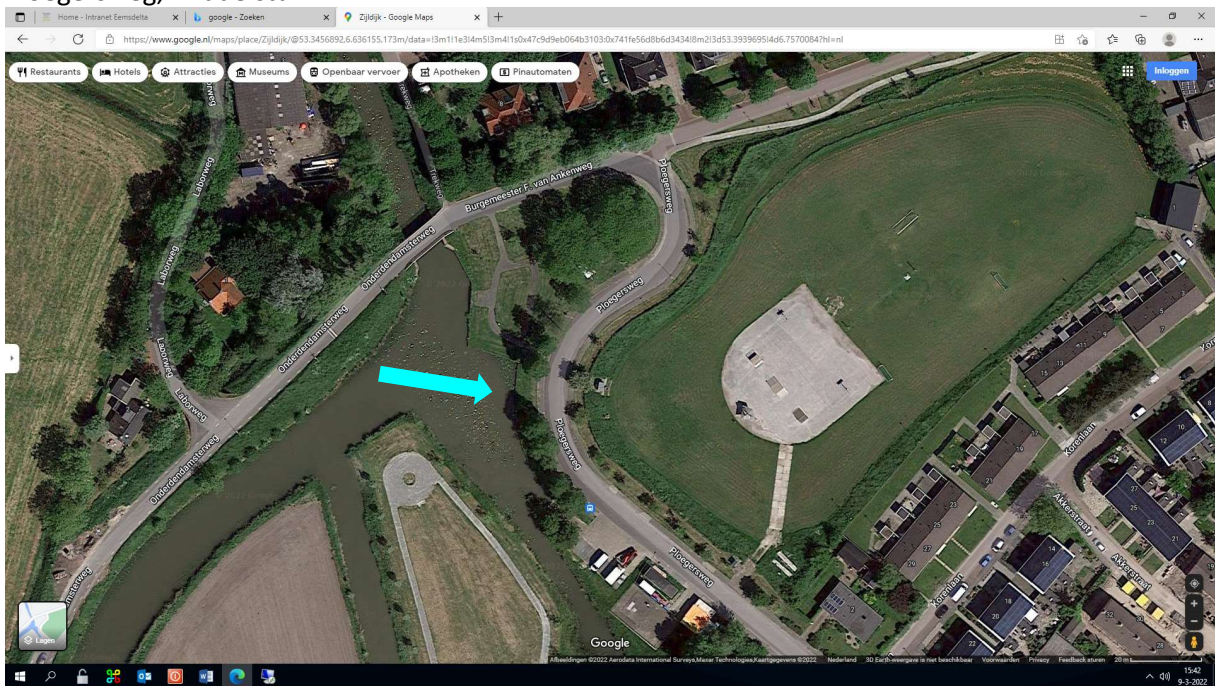
Borgweg: Zeerijpstermaar



Leermens, Eenum en Oosterwijtwerd Schansweg, Leermens: Leermenstermaar

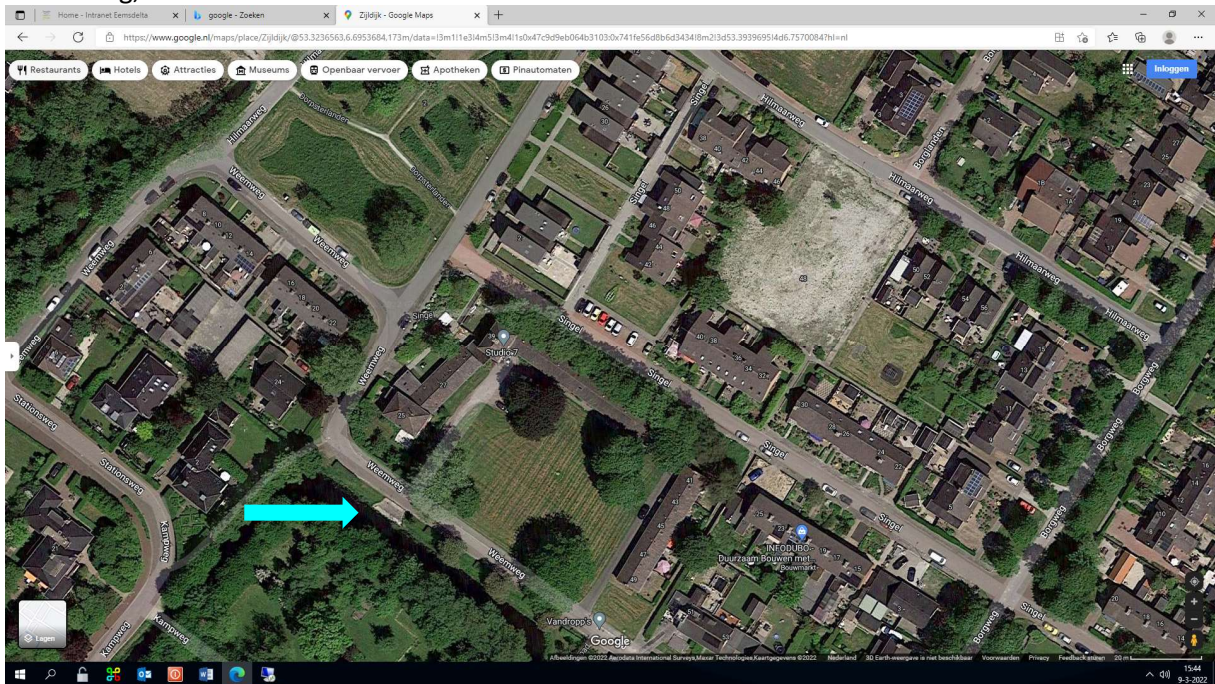


Middelstum, Huizinge, Westerwijtwerd en Westeremden Ploegersweg, Middelstum



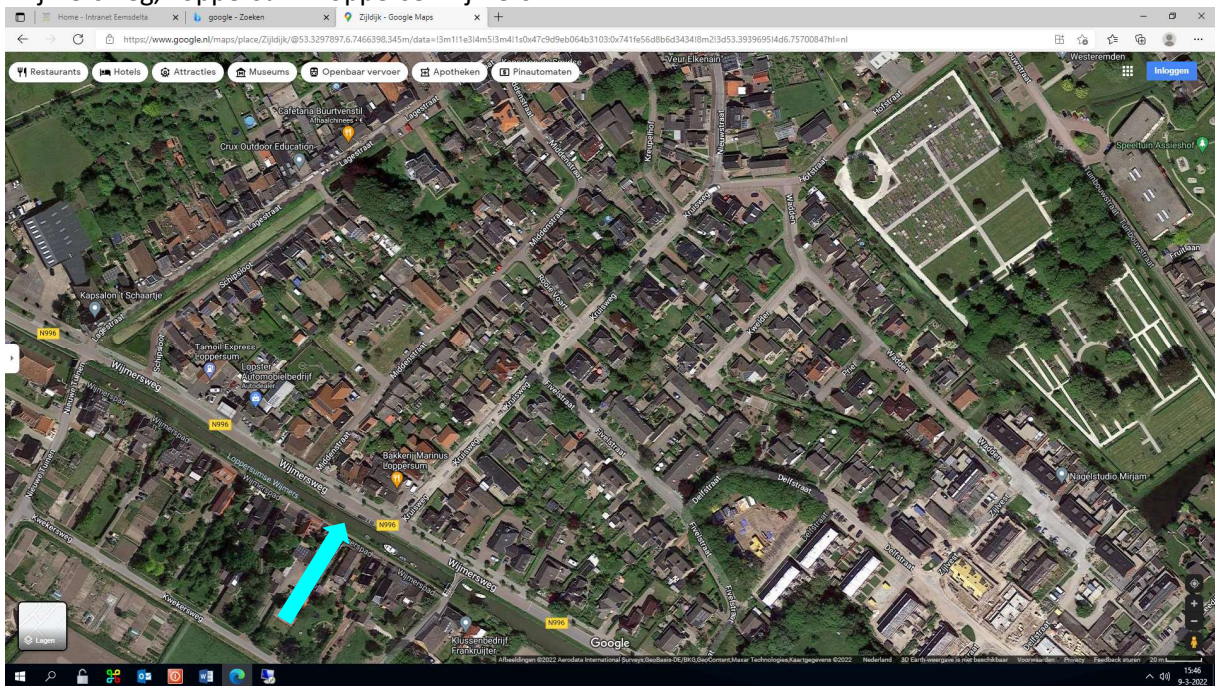
Stedum

Weemweg, Stedum



Loppersum

Wijmersweg, Loppersum: Lopperse Wijmers



Garrelsweer en Wirdum

Rijksweg, Garrelsweer: Damsterdiep

