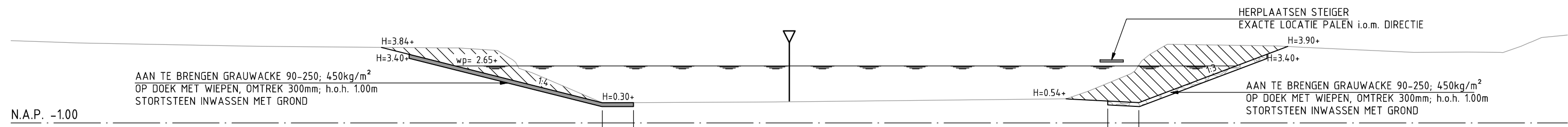
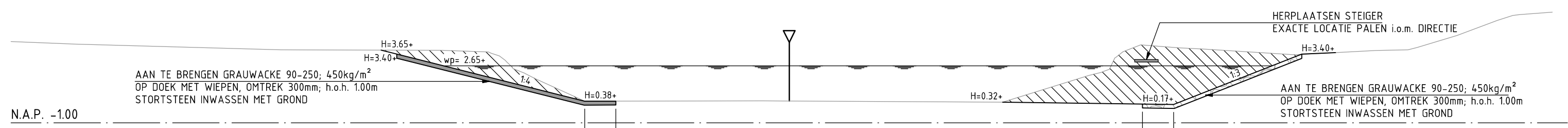


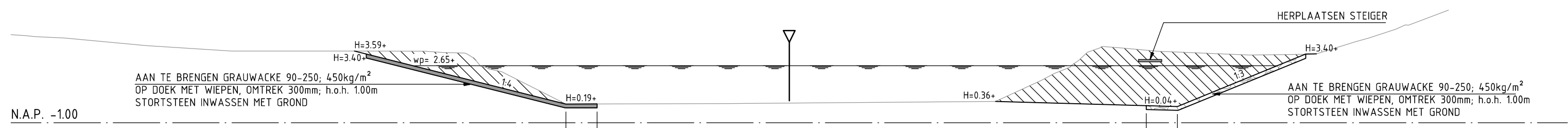
DP-01  
Metrering 0050.000



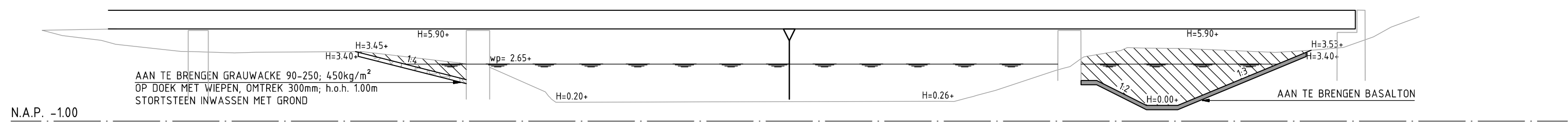
DP-02  
Metrering 0100.000



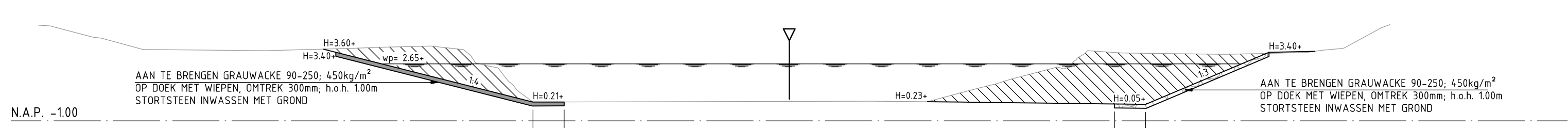
DP-03  
Metrering 0150.000



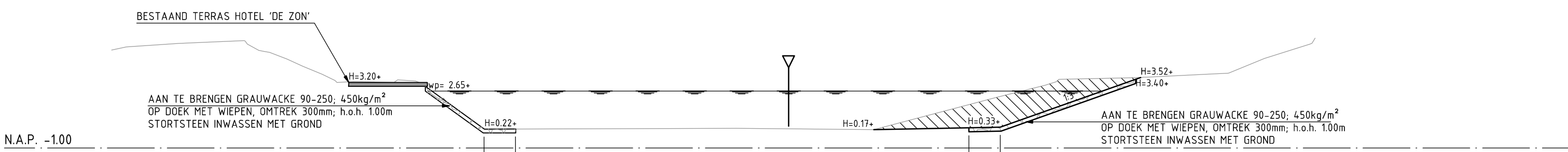
DP-04  
Metrering 0200.000



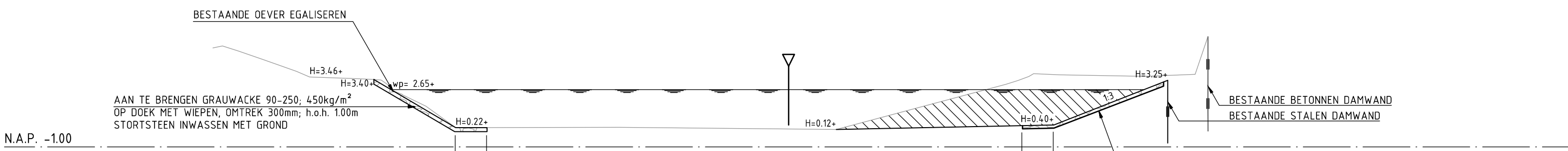
DP-05  
Metrering 0225.000



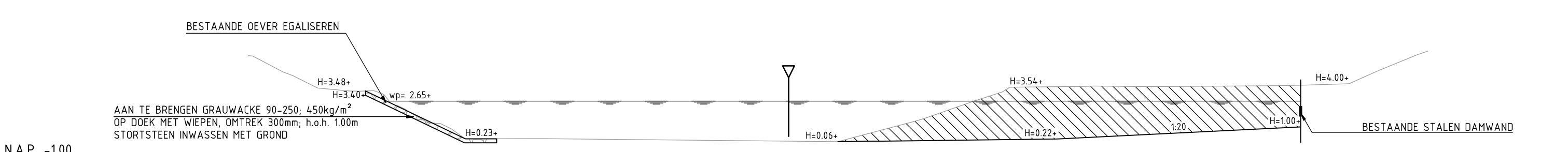
DP-06  
Metrering 0250.000



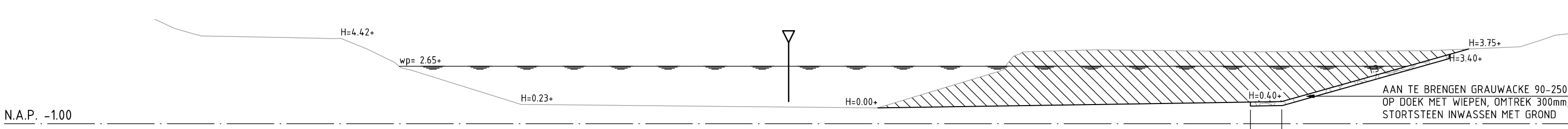
DP-07  
Metrering 0300.000



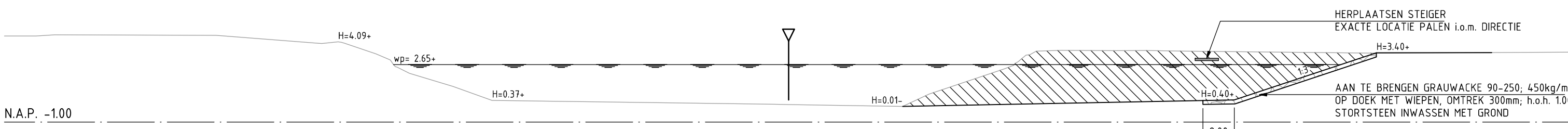
DP-08  
Metrering 0350.000



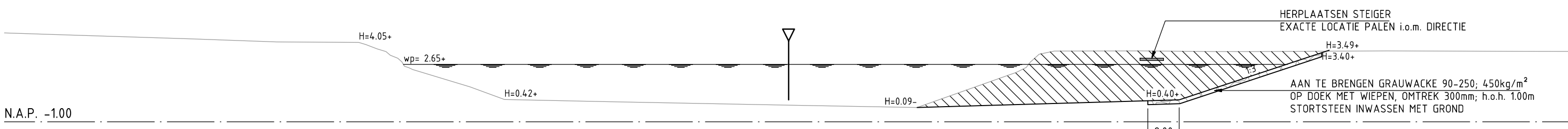
DP-09  
Metrering 0400.000



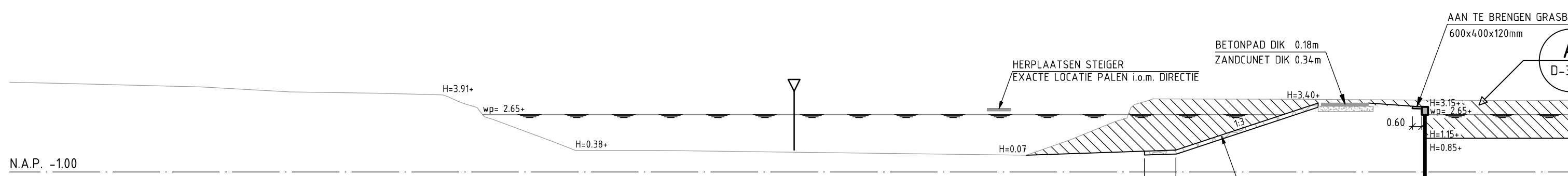
DP-10  
Metrering 0450.000



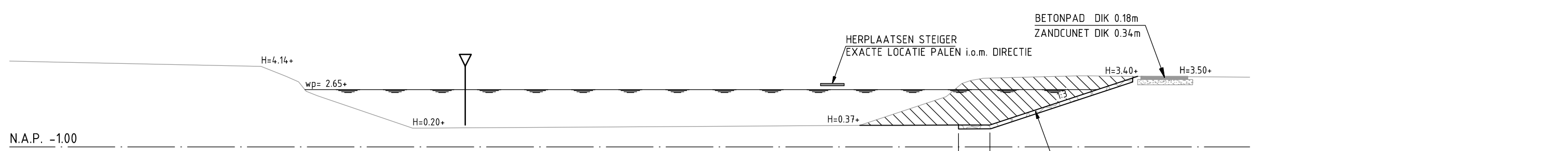
DP-11  
Metrering 0500.000



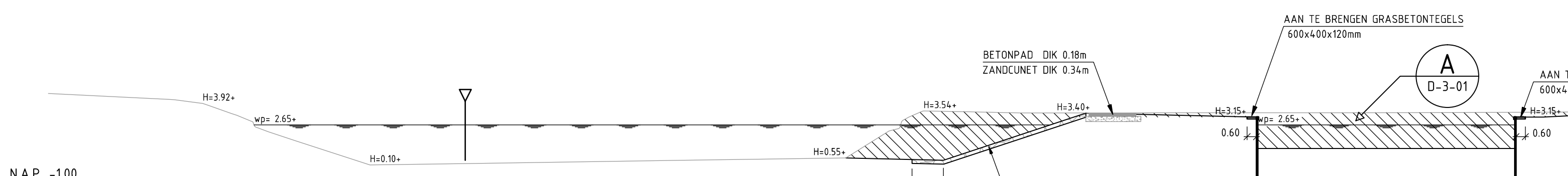
DP-12  
Metrering 0550.000



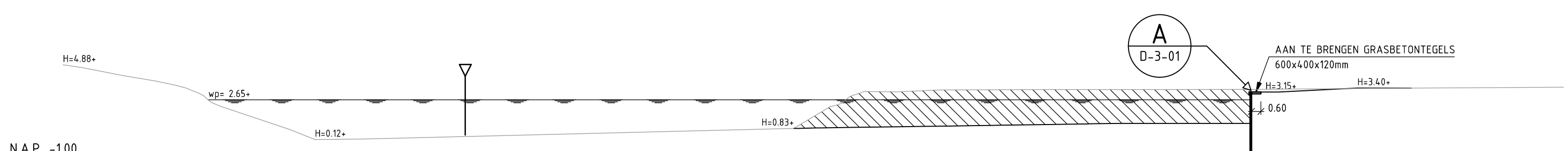
DP-13  
Metrering 0600.000



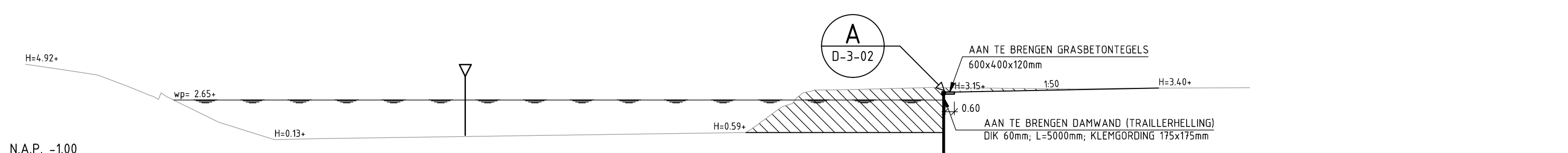
DP-14  
Metrering 0650.000



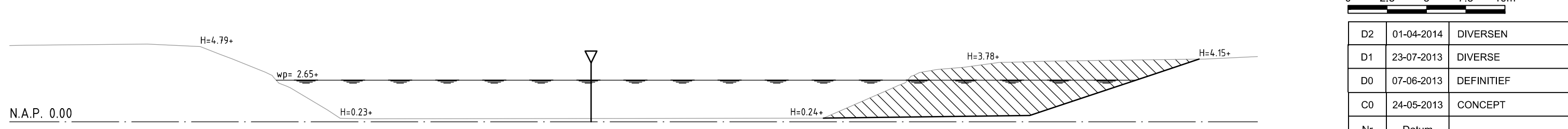
DP-15  
Metrering 0714.765



DP-16  
Metrering 0750.000



DP-17  
Metrering 0800.000



DP-18  
Metrering 0900.000

0 2.5 5 7.5 10m

D2	01-04-2014	DIAGRAM	FRB
D1	23-07-2013	DIAGRAM	GW
D0	07-06-2013	DEFINITIEF	RL
C0	24-05-2013	CONCEPT	RL
Nr	Datum	Wijziging	Tek

Opdrachtgever

WATERSCHAP VELD & VECHT

Projectaansluiting

VECHTOEVERS FASE 2

Tekeningomschrijving

DWARSPROFIELEN

Tekeningnummer

259195-DP-3-01

Tekenaar

RD LAGCHER

Projectleider

C. KRAMER

Status

DEFINITIEF

Tekeningnummer

www.anteagroup.nl

Schaal

1:250

Formaat

1470x594

Bladen totaal

1 IN 1

Wijziging

D2