

slangen+koenis  
architecten



opdrachtgever  
Gemeente Amstelveen

project  
Uitbreiding zwembad De Meerkamp

fase  
schetsontwerp - project informatie boek

datum  
12 december 2022

projectnummer  
2021032



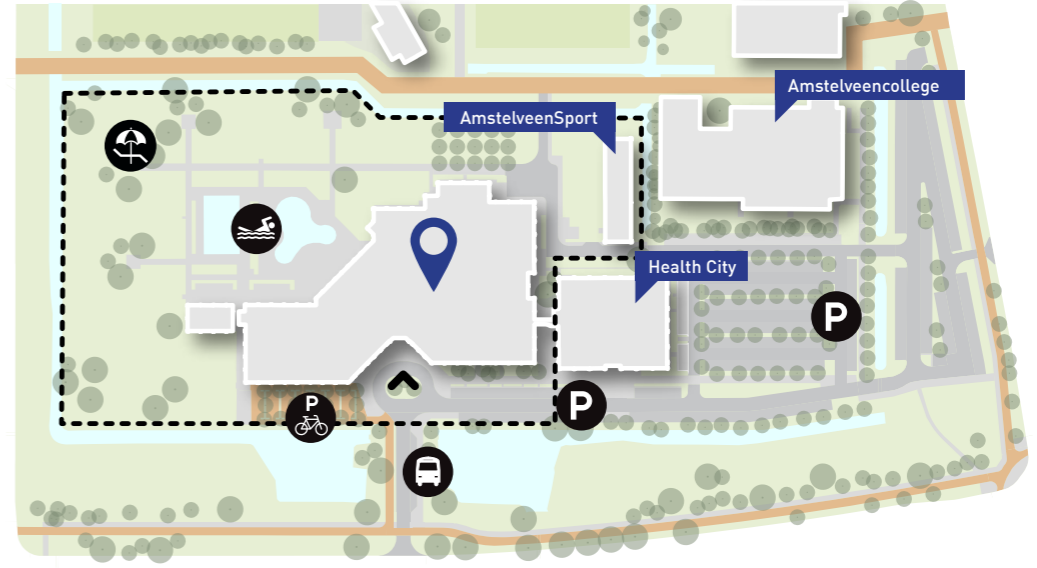
schetsontwerp.

locatie.

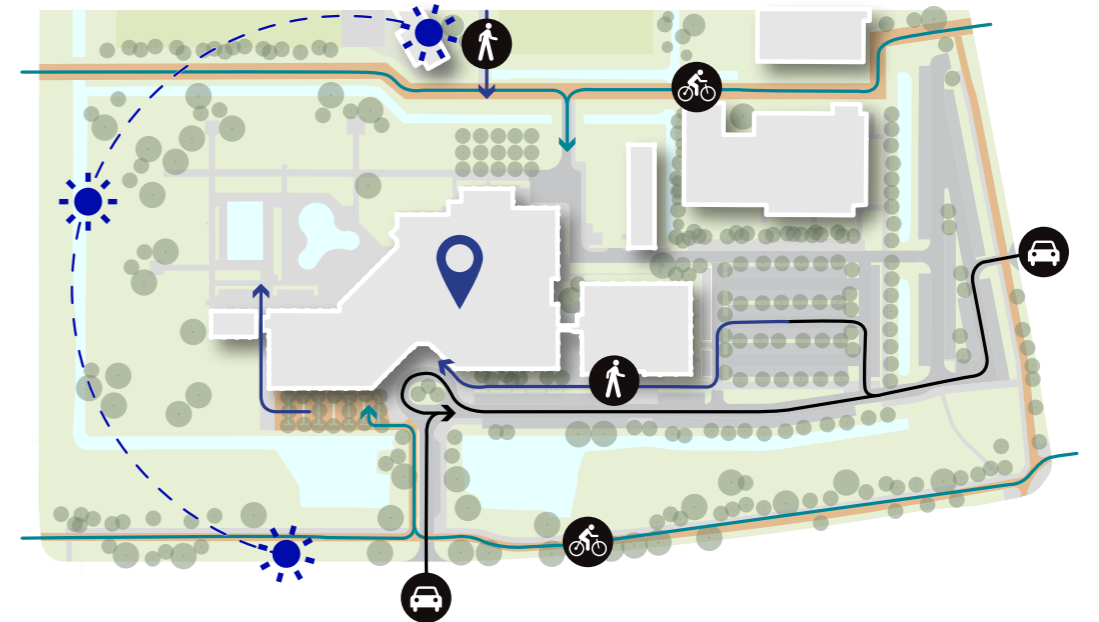




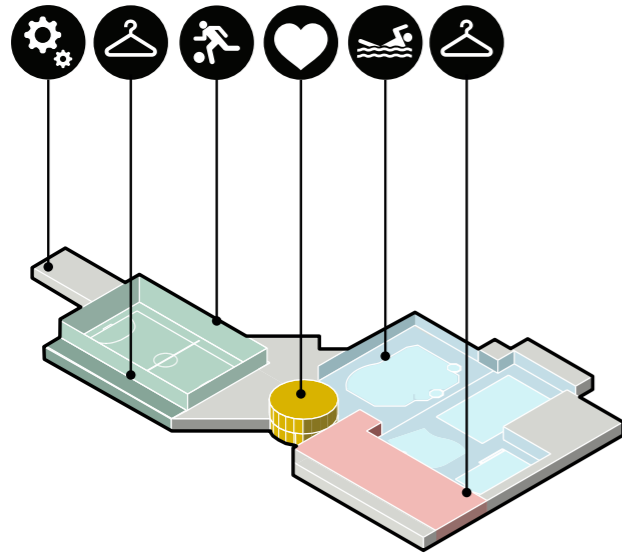
00. de groene long



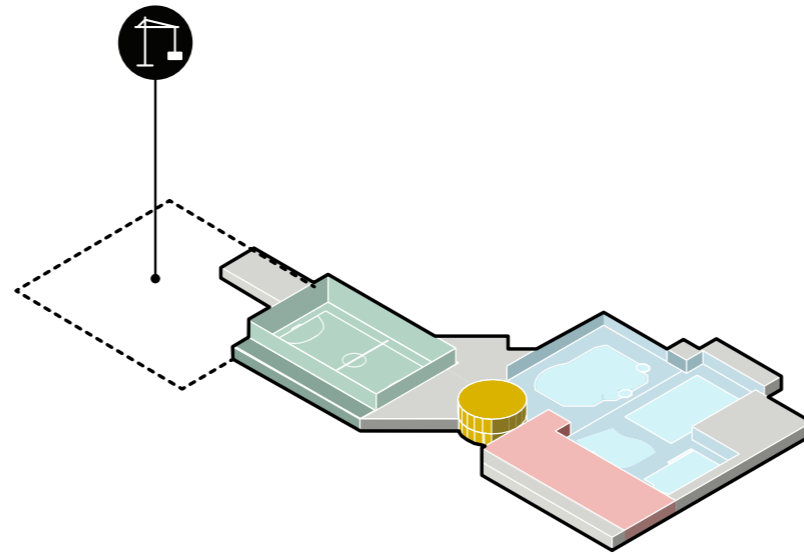
01. functies



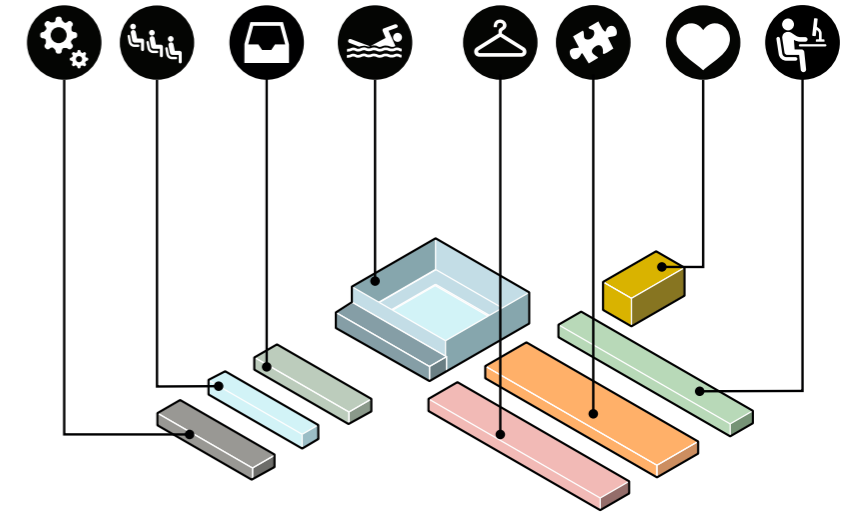
02. toegankelijkheid en orientatie



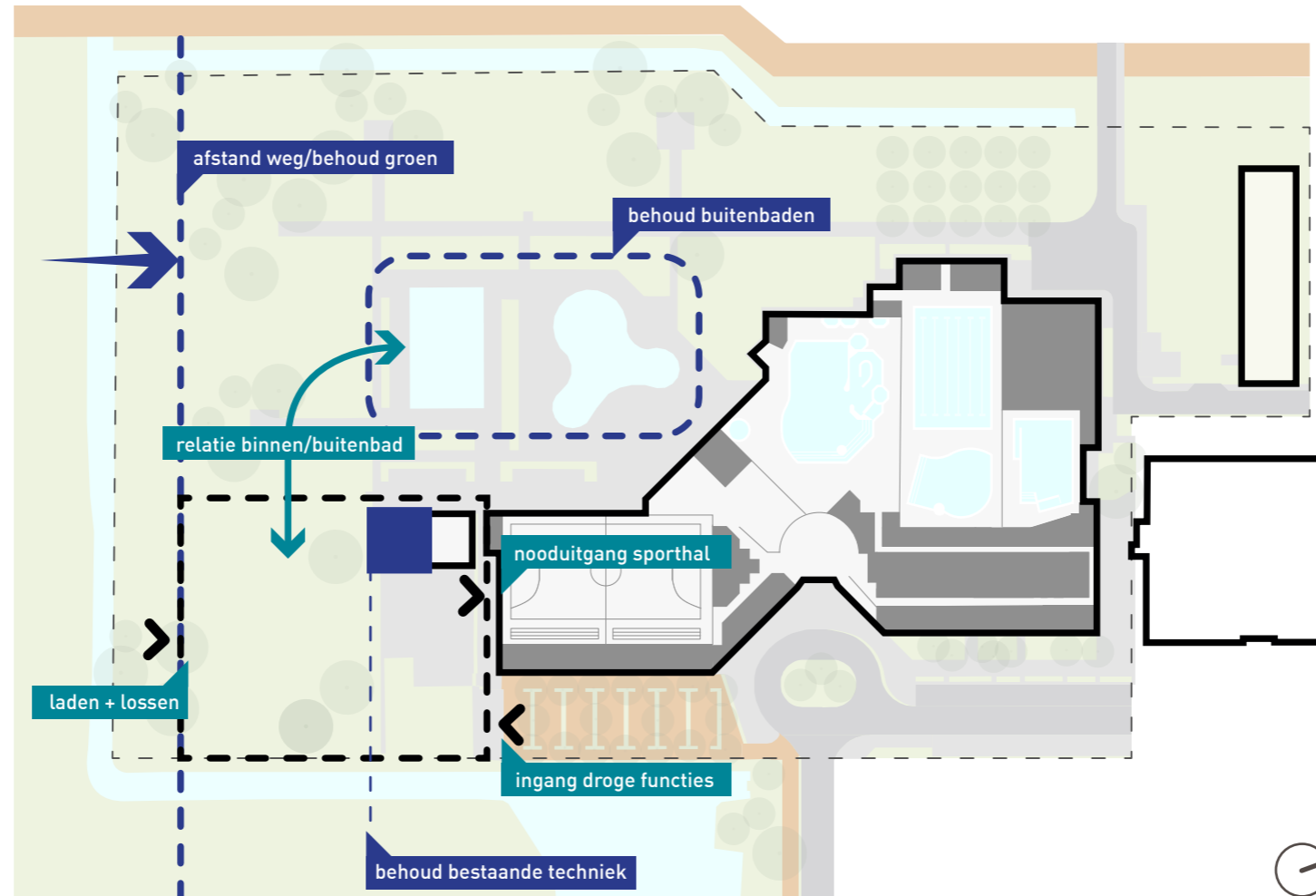
01. huidige gebouw



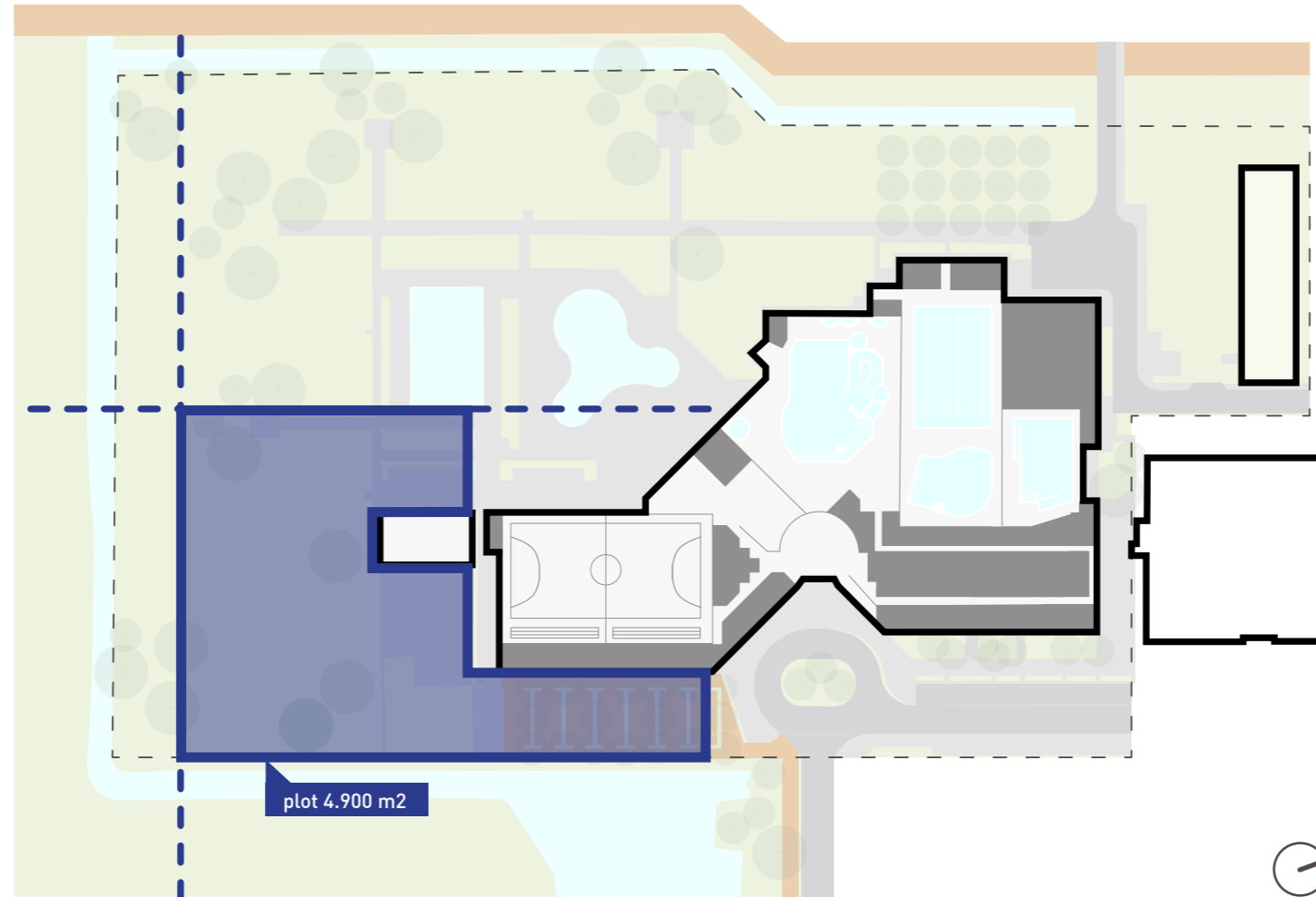
02. zoeklocatie



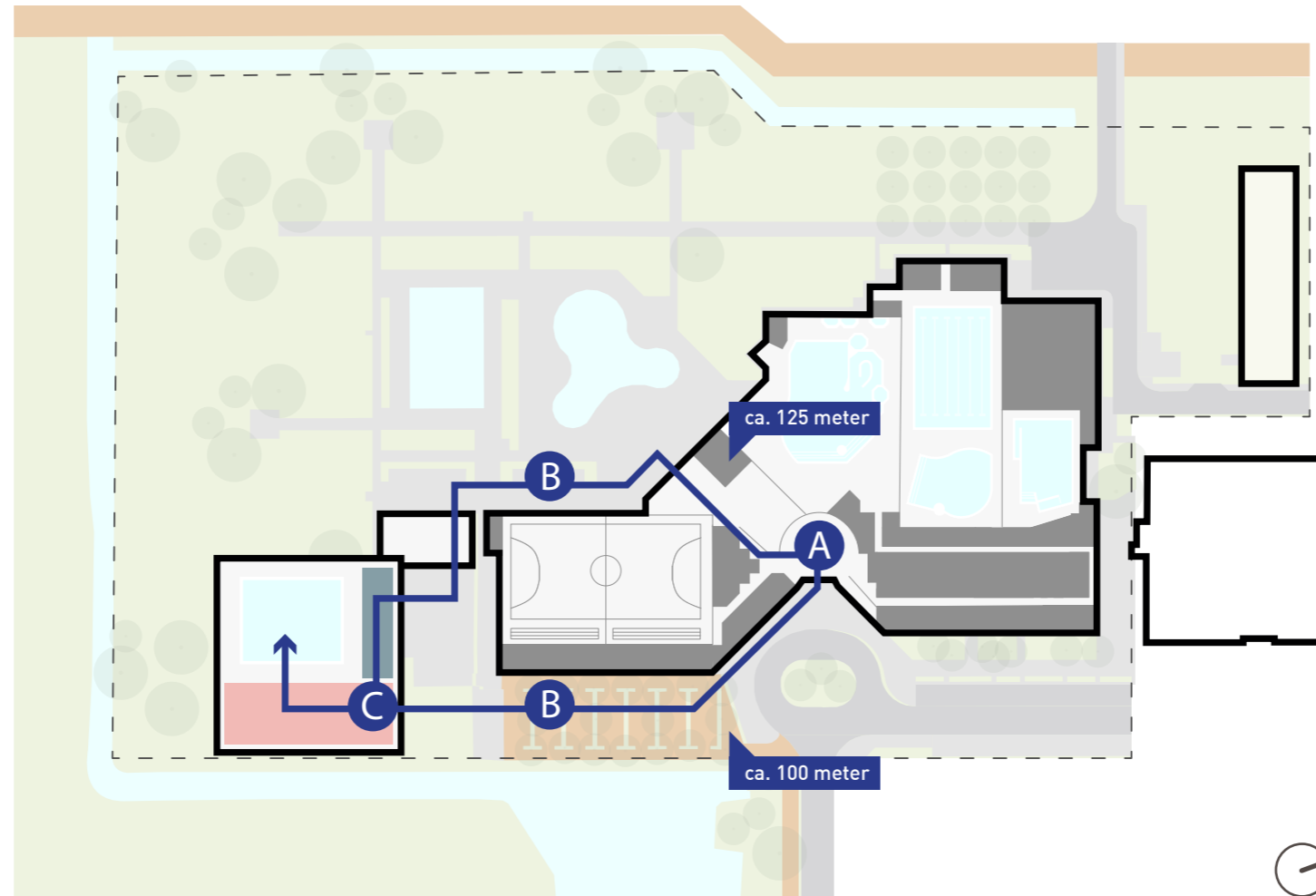
03. PvE



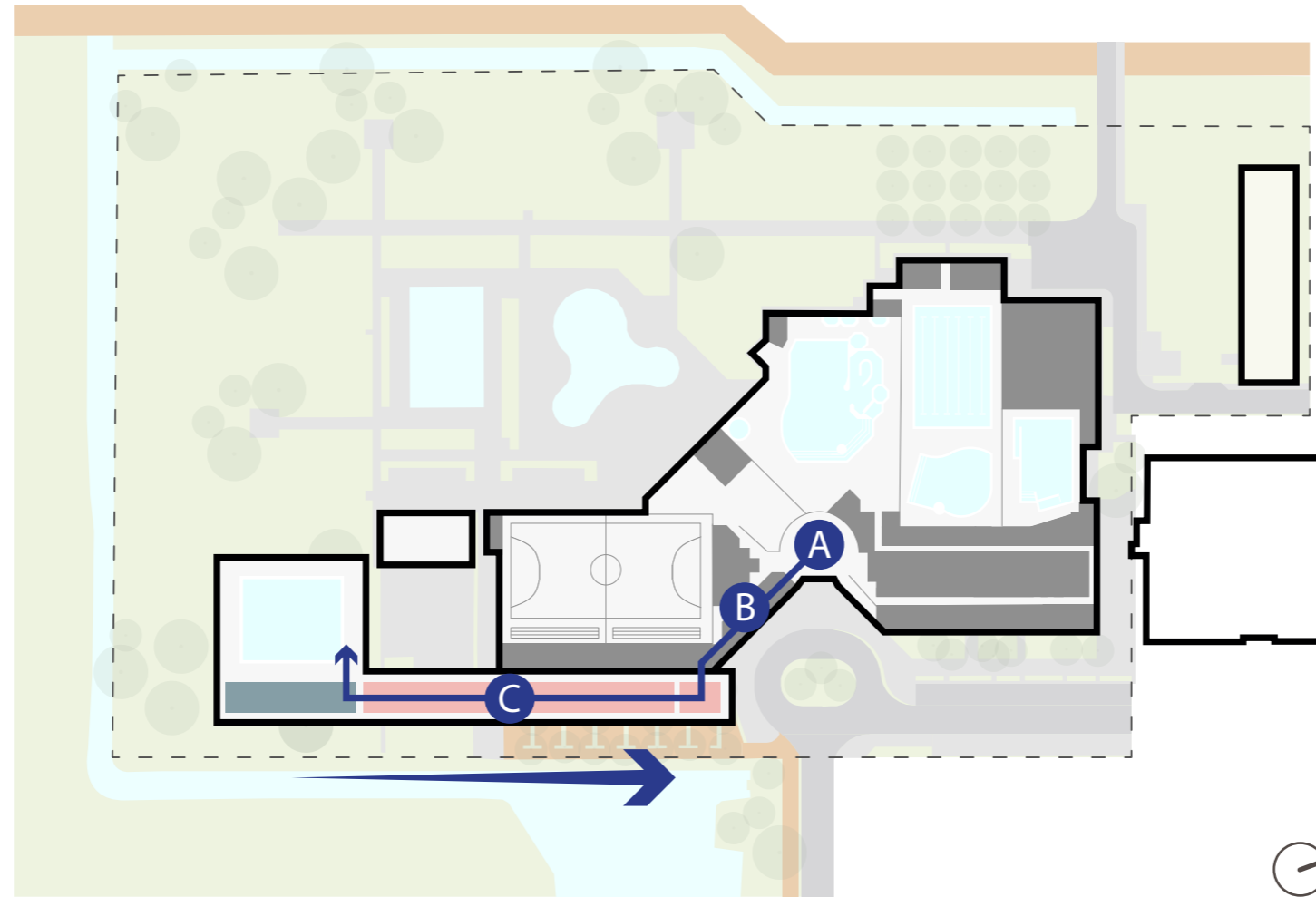
01. randvoorwaarden



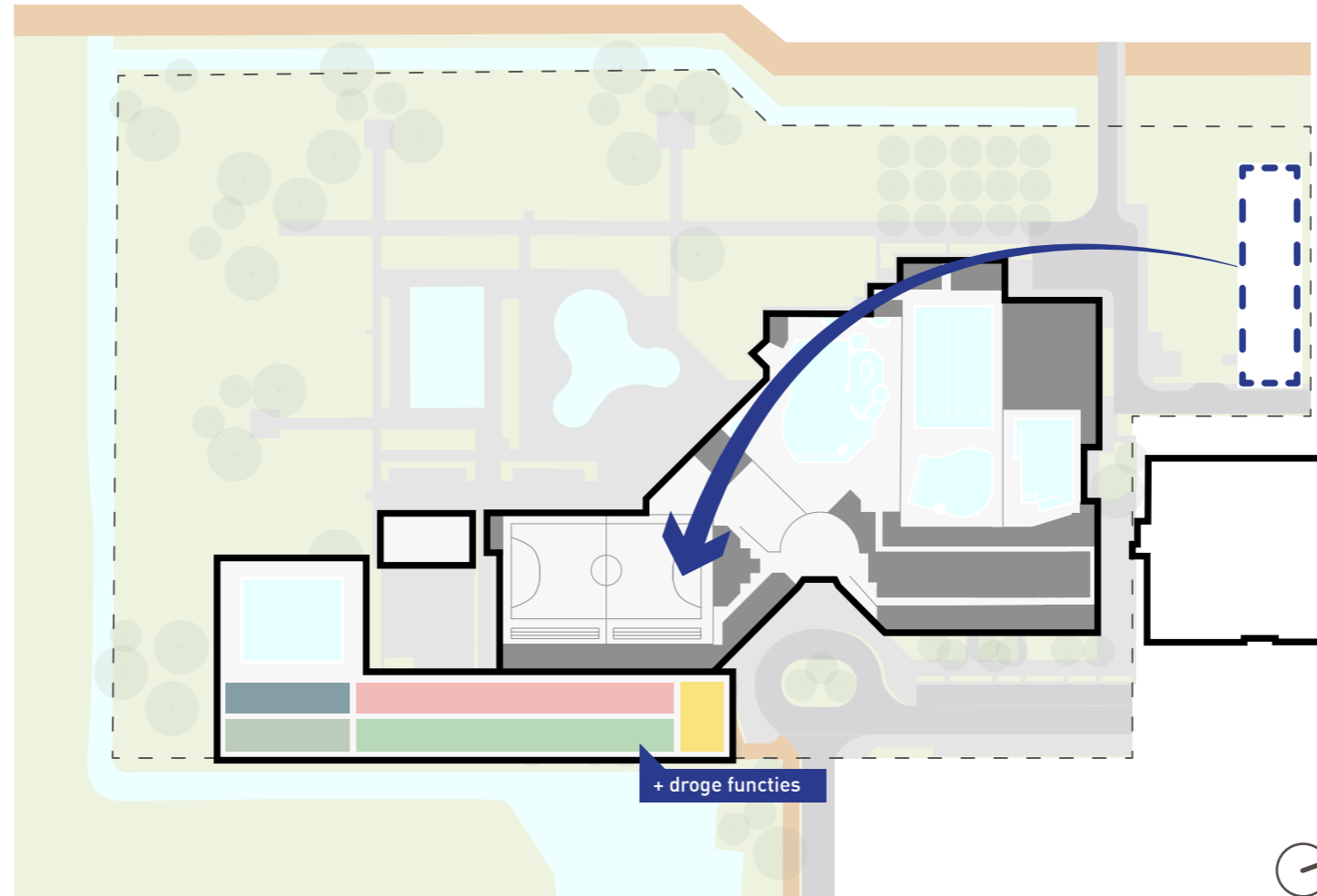
02. kavel



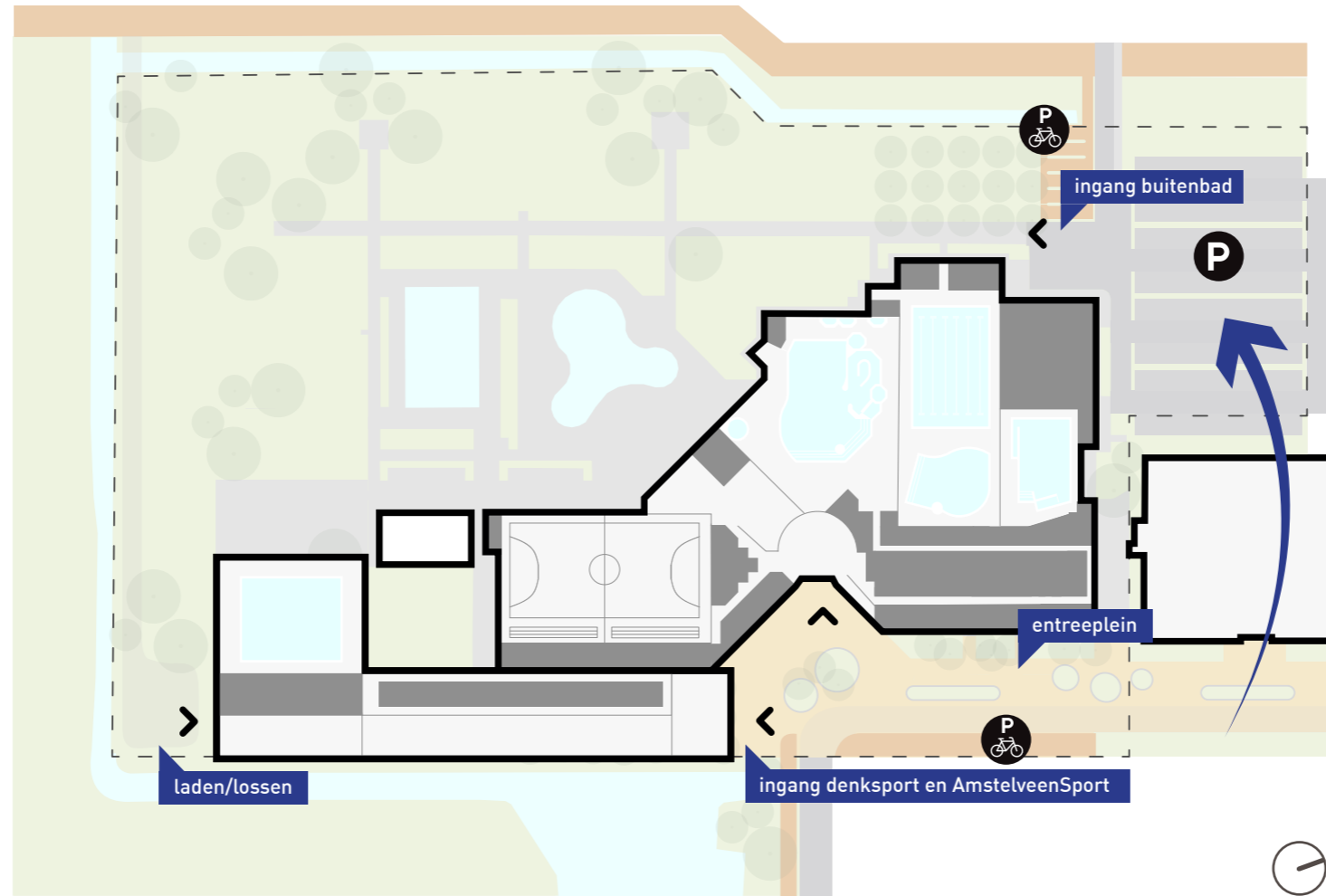
03. bereikbaarheid via centrale entree



04. kleedruimte aan centrale entree

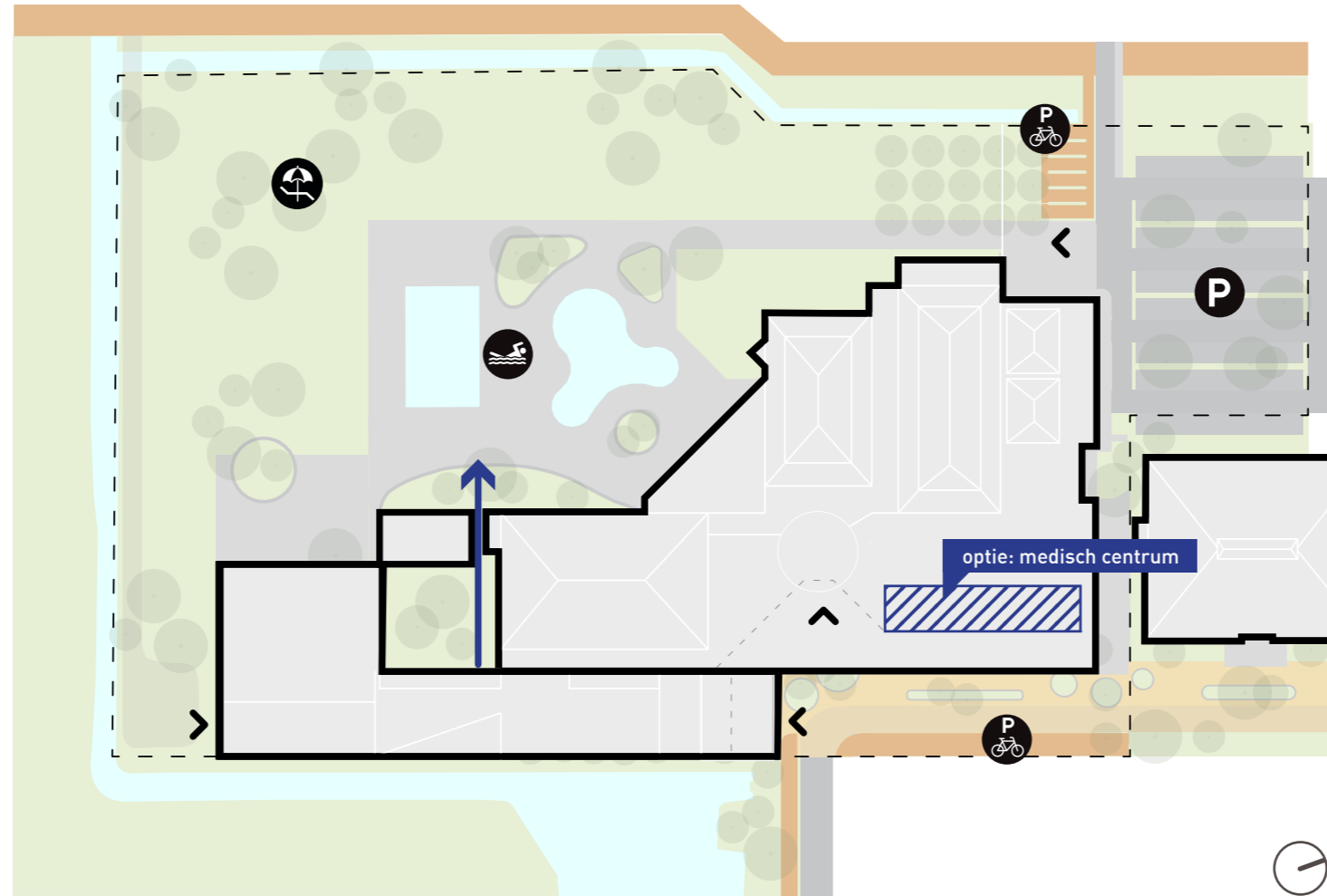


05. volledige programma



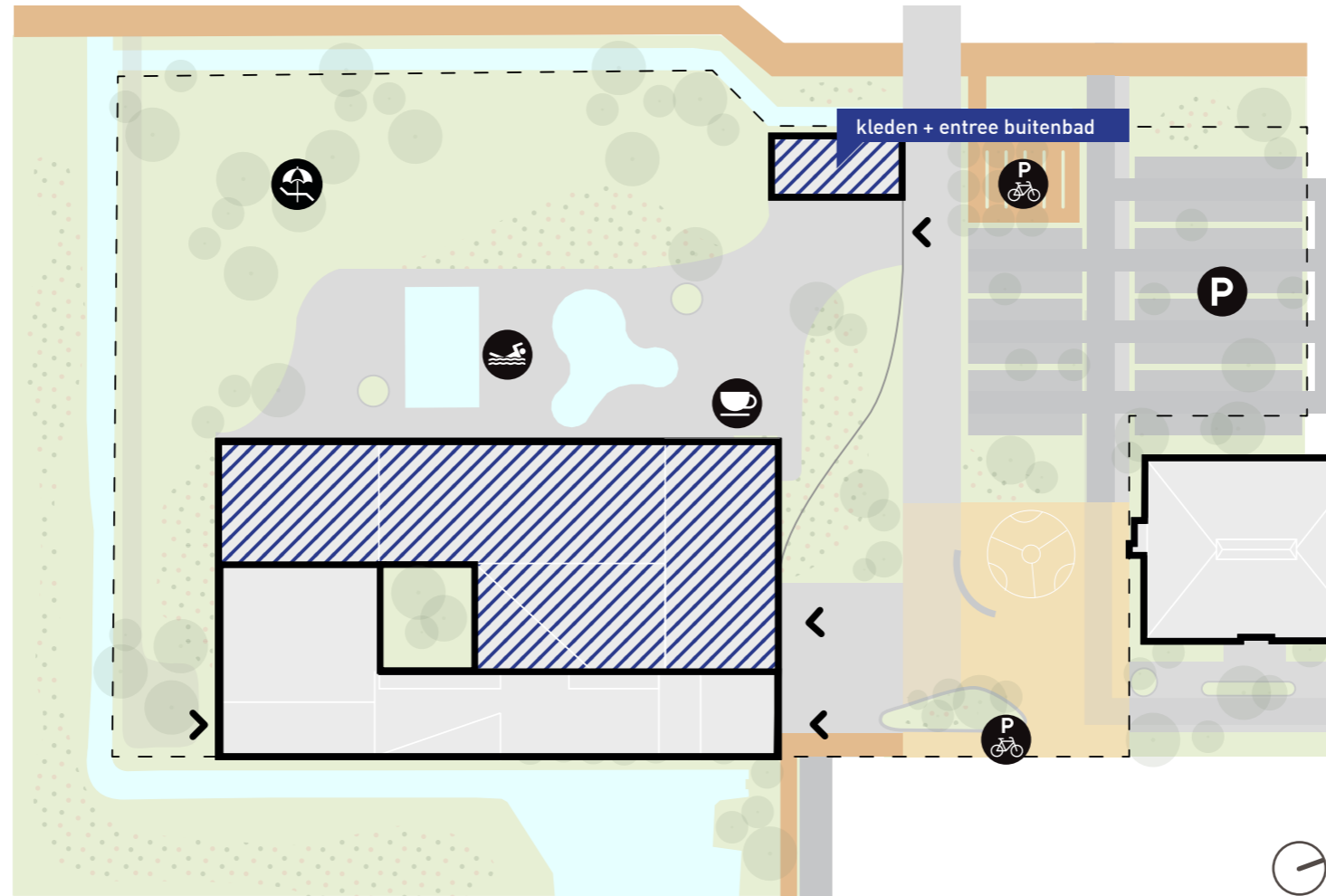
06. aansluiting bestaande locatie

# fase 2.



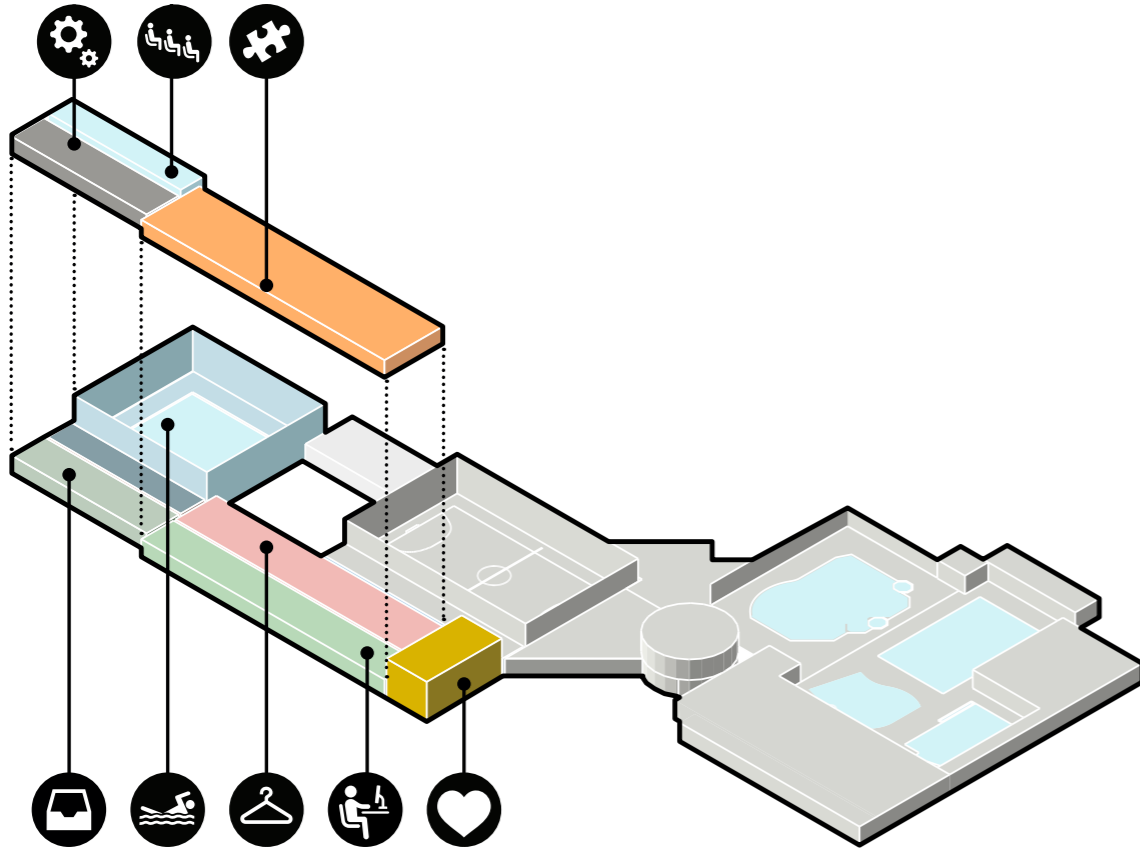
variant A: renovatie bestaande bouw

# fase 2.

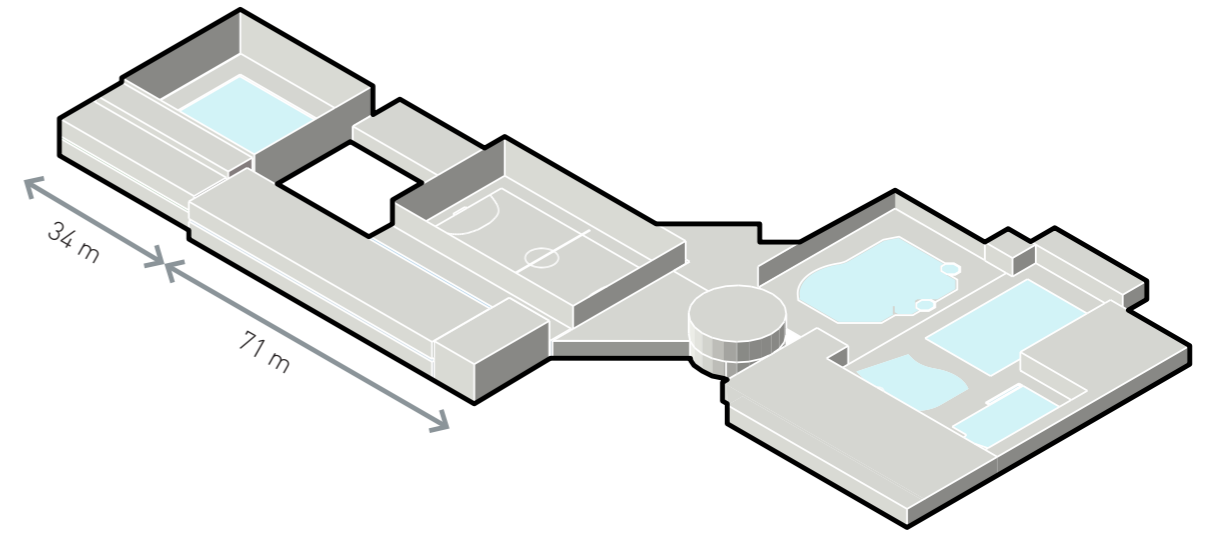


variant B: nieuwbouw

# vormgeving.



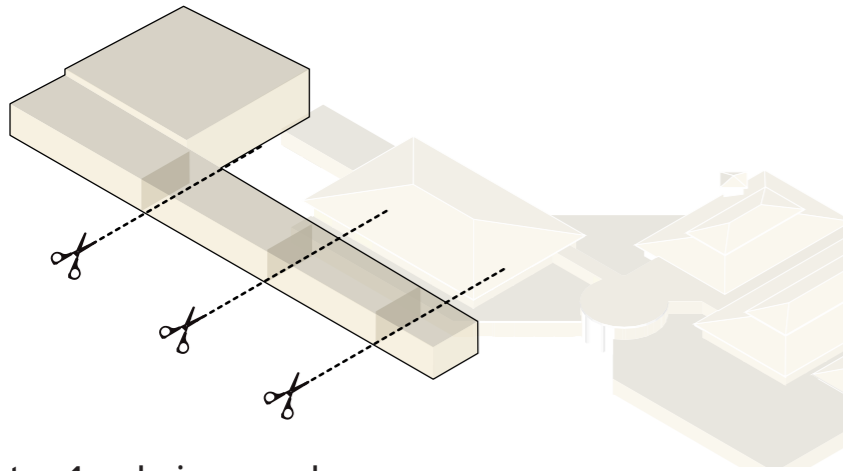
01. nieuwe programma



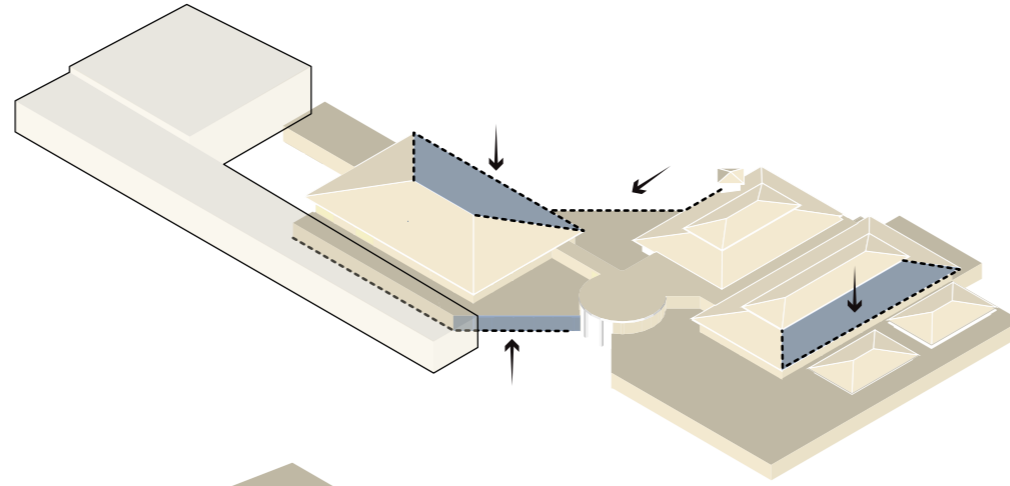
02. grote schaal functies



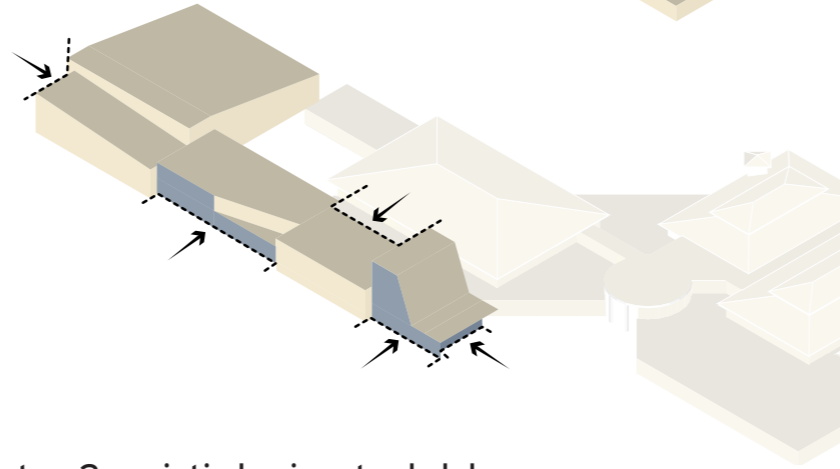
# vormgeving.



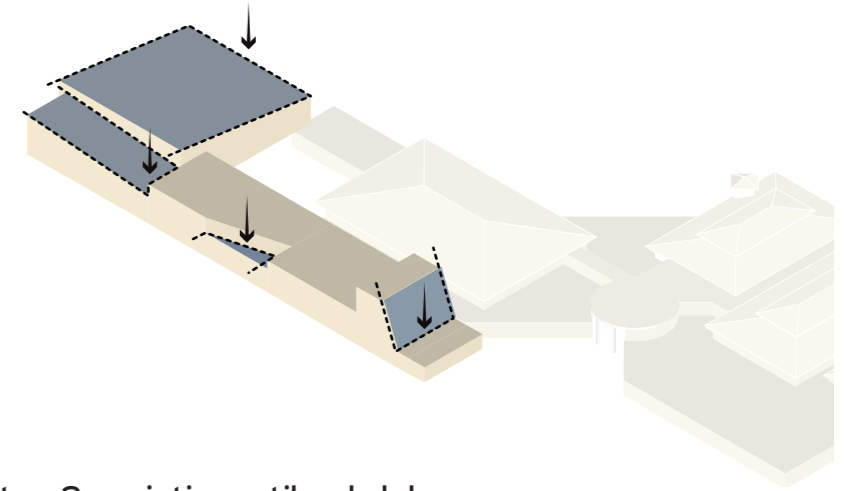
stap 1: opknippen volume



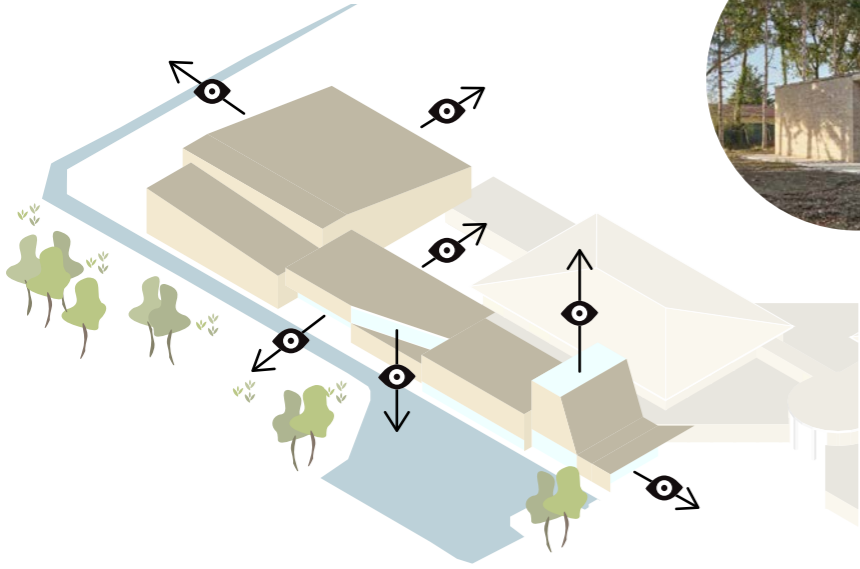
stap 2: variatie horizontaal vlak



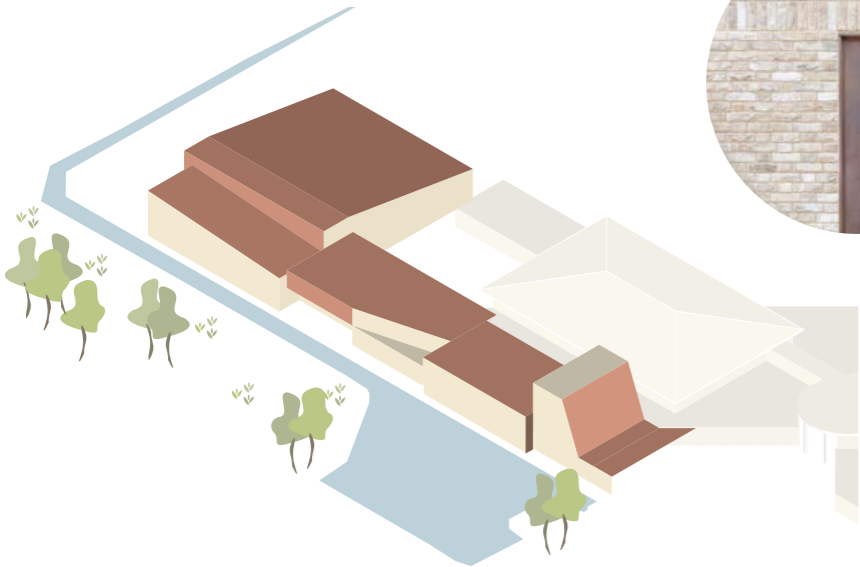
stap 3: variatie vertikaal vlak



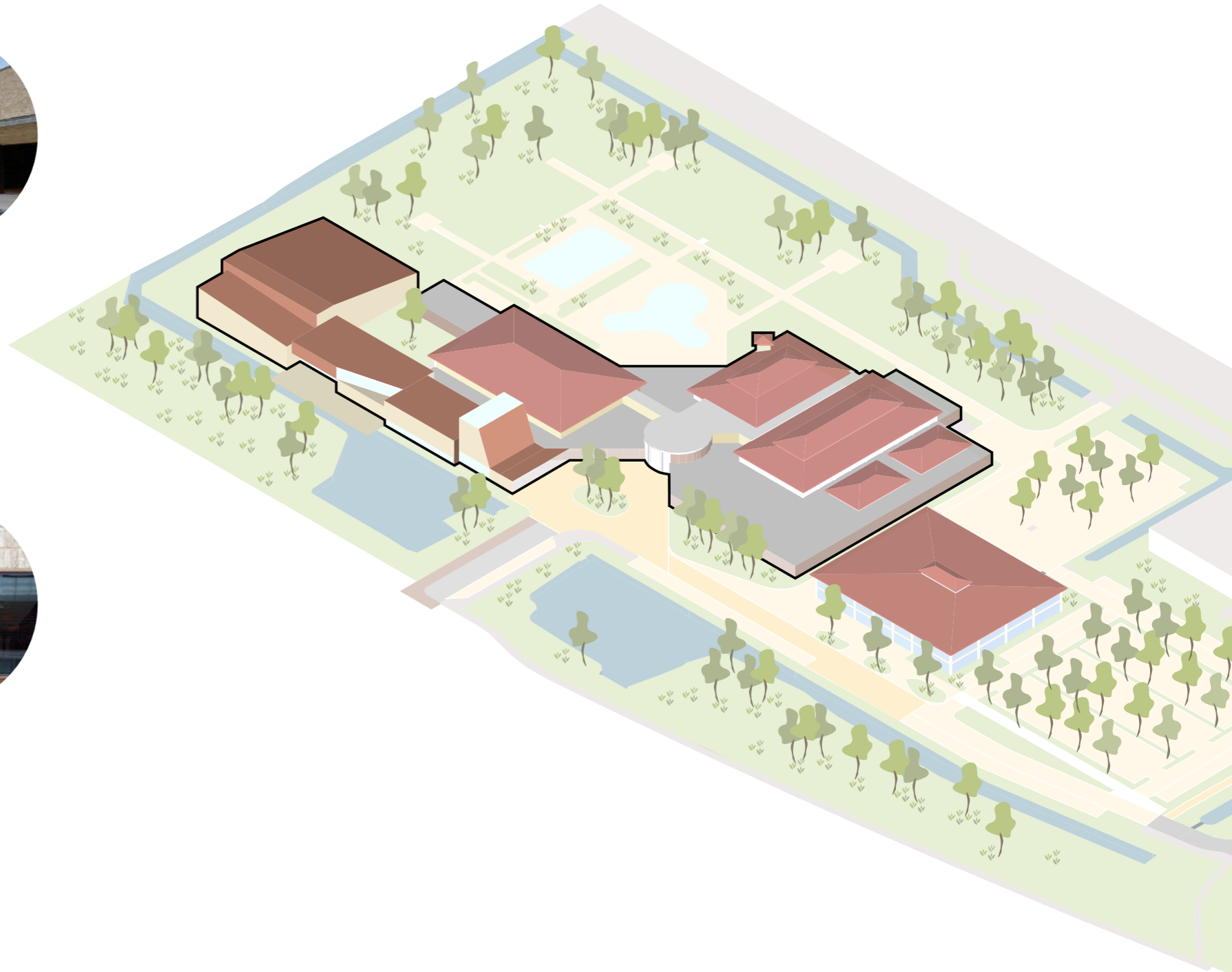
# vormgeving.



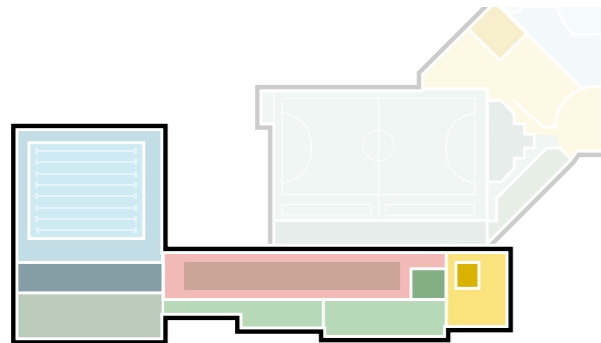
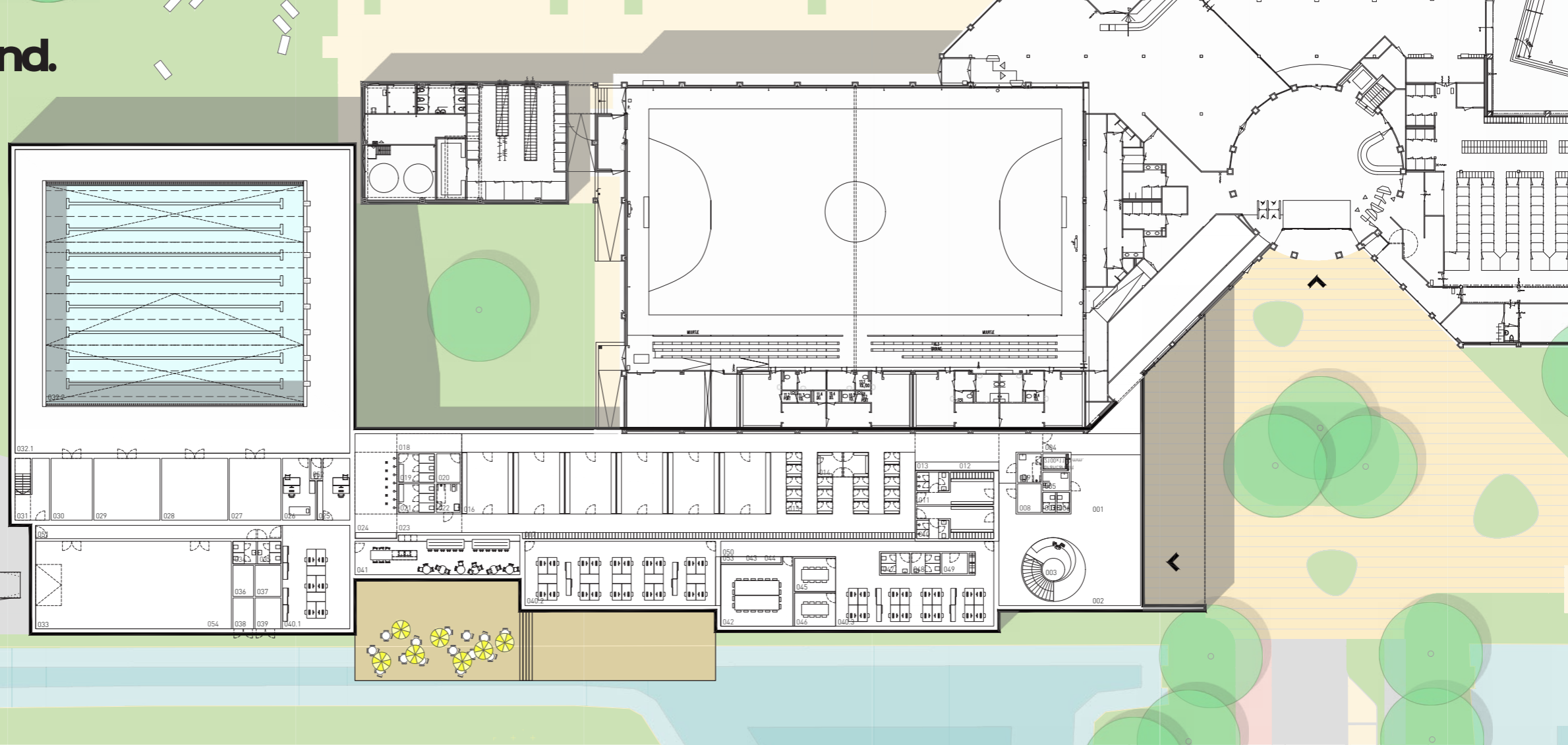
transparantie



materiaalgebruik

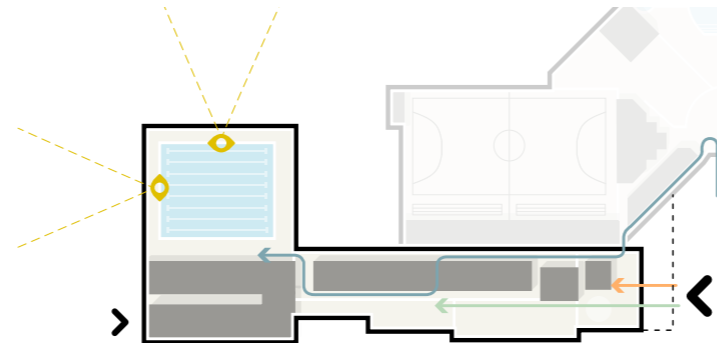


# begane grond.



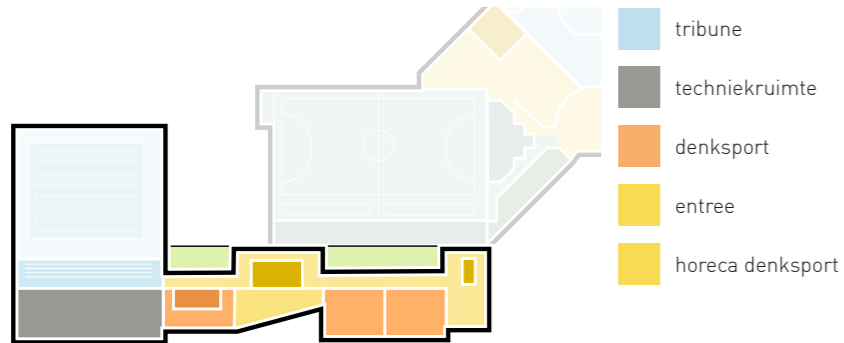
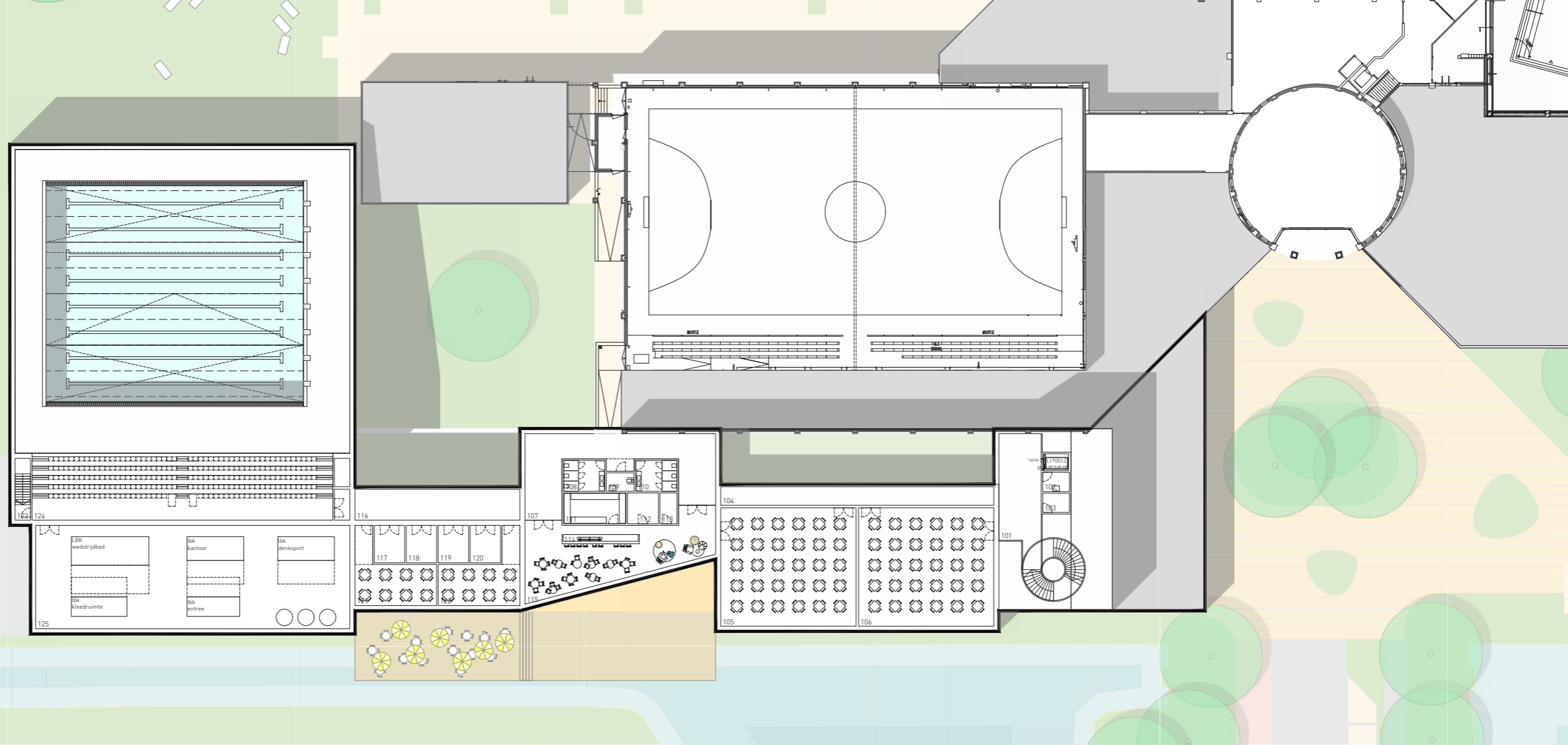
functies

- zwembad
- bergingen/ect.
- kleden
- magazijn
- kantoren
- entree

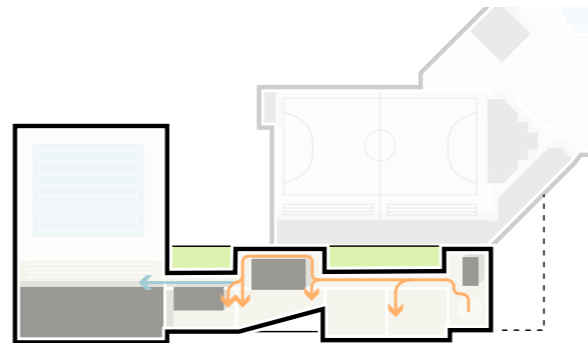


logistiek

# verdieping.

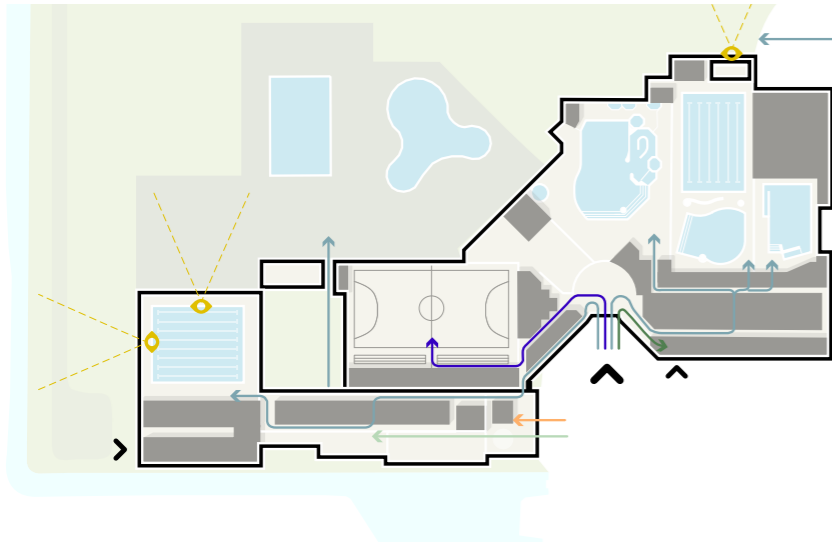


functies

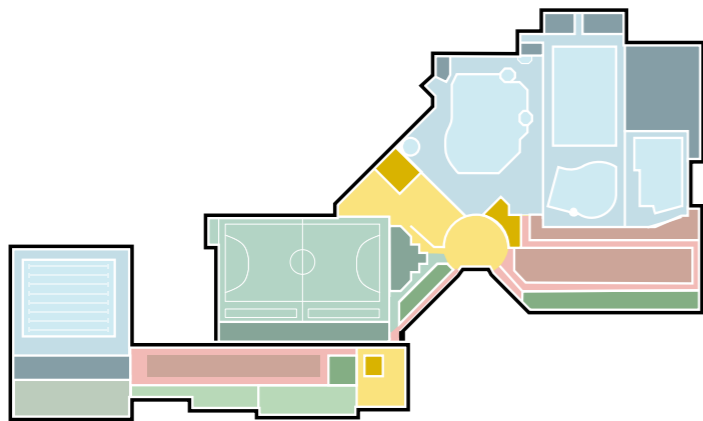


logistiek

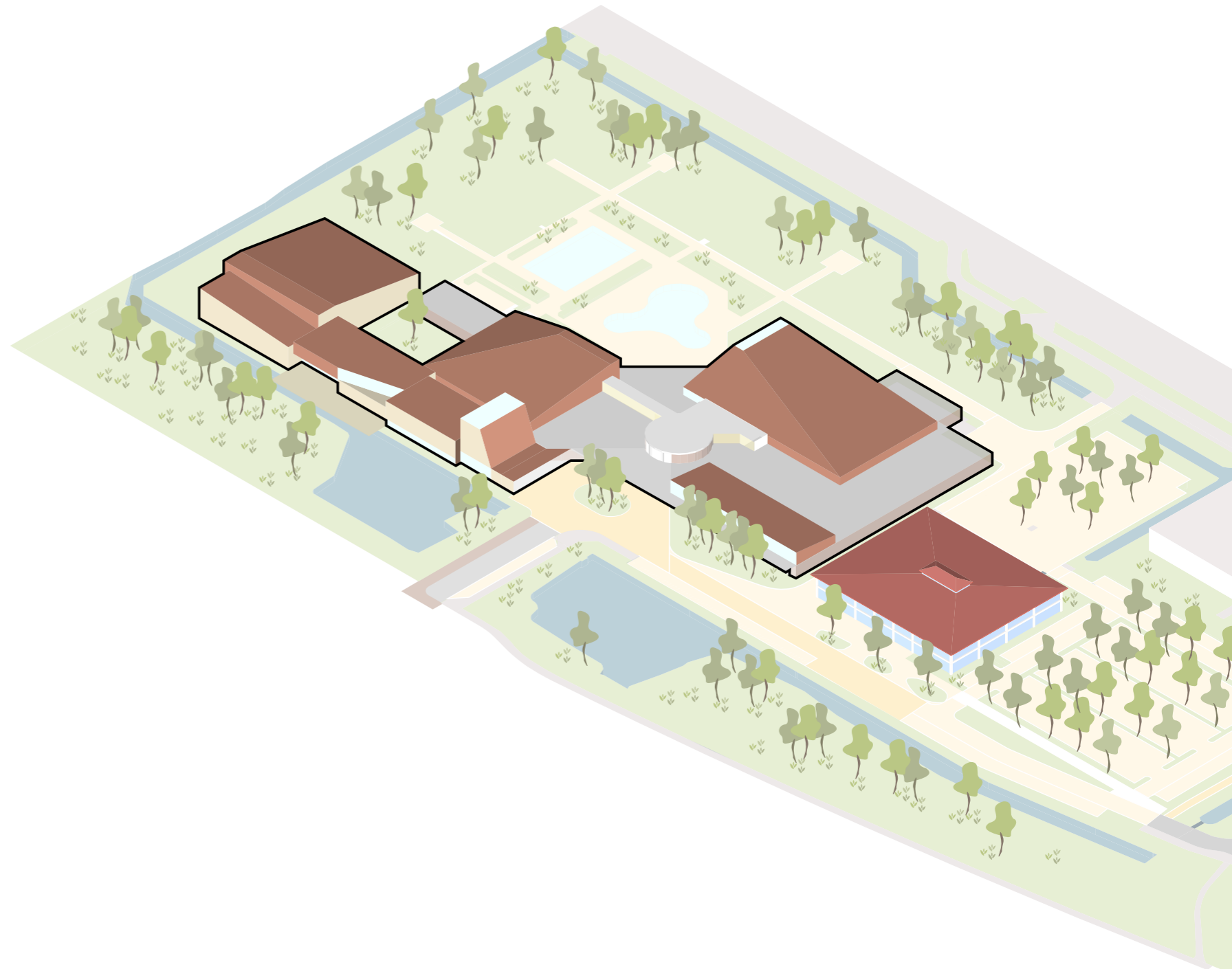
# fase 2-variant A.



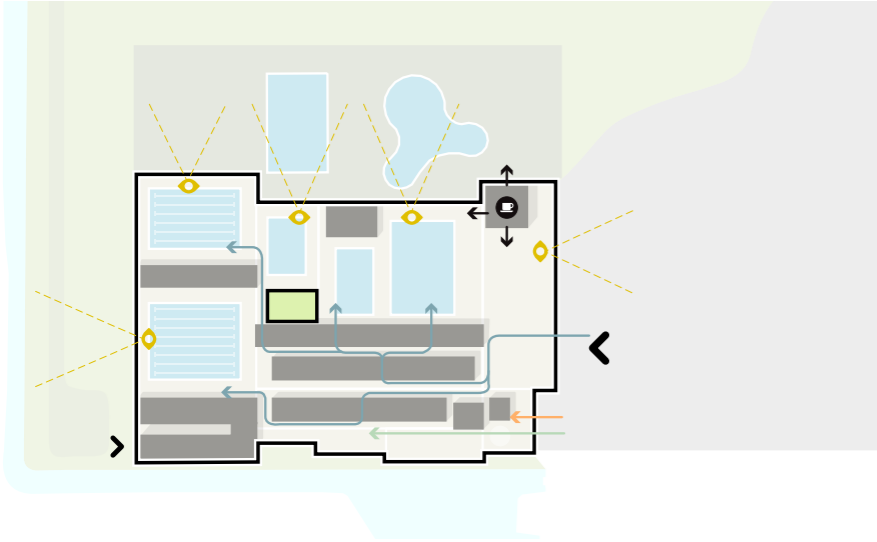
logistiek



functies



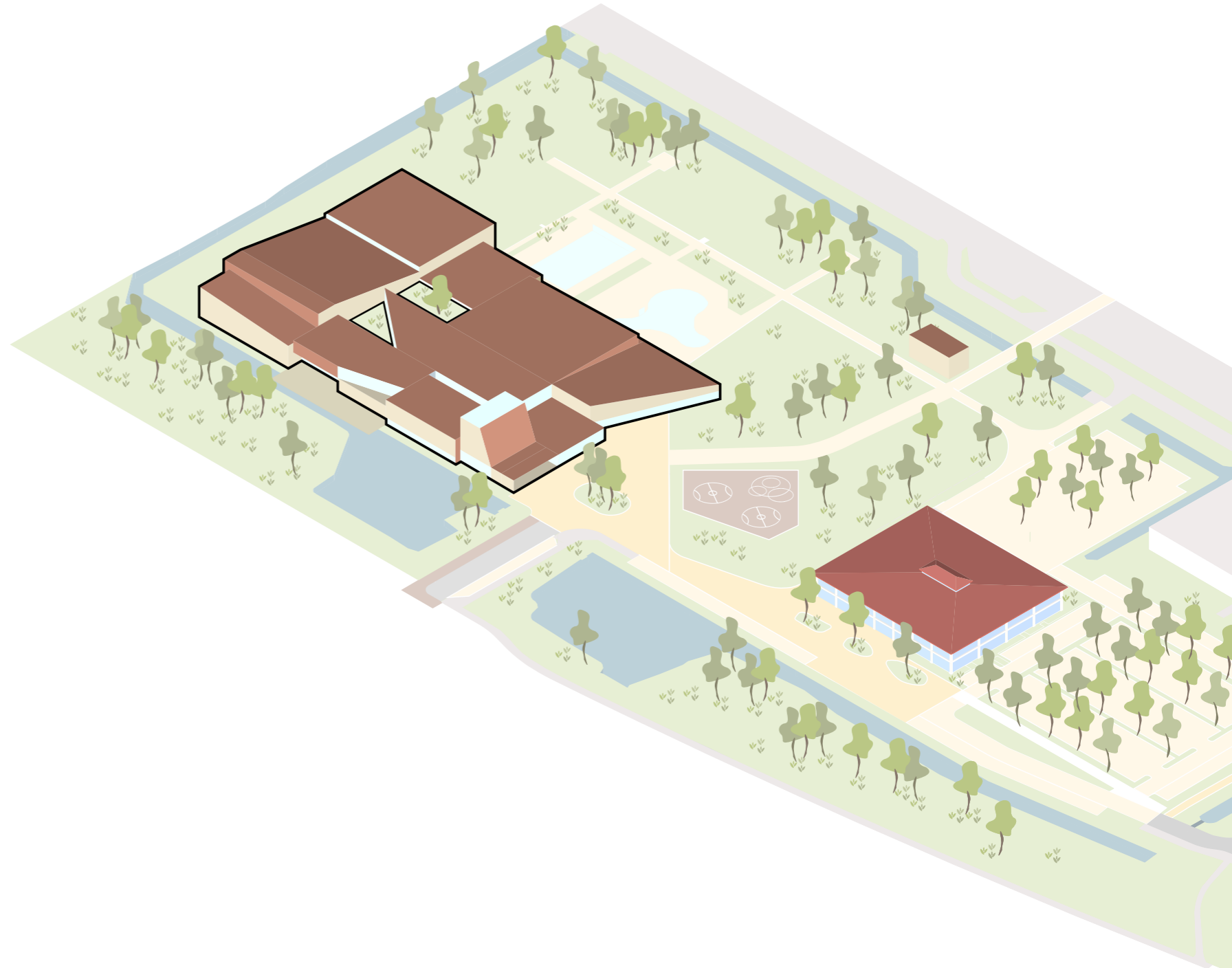
# fase 2-variant B.



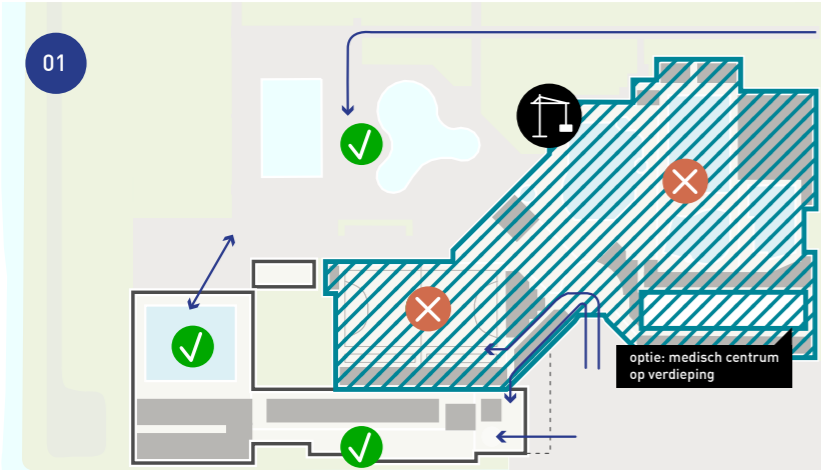
logistiek



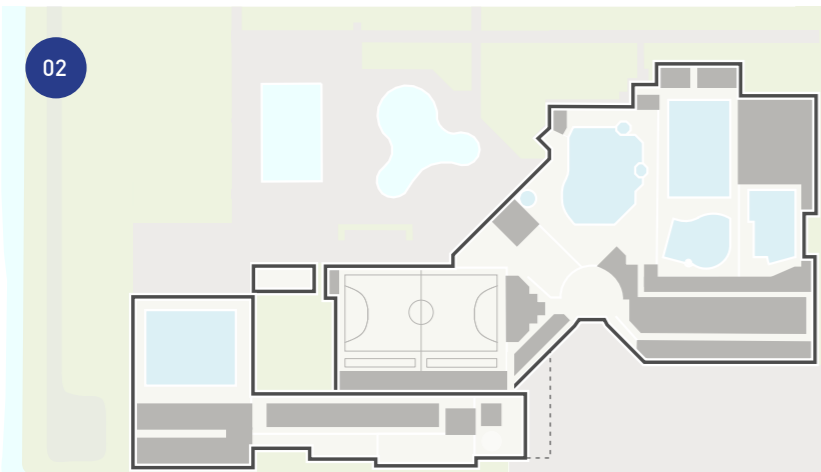
functies



## variant A: renovatie

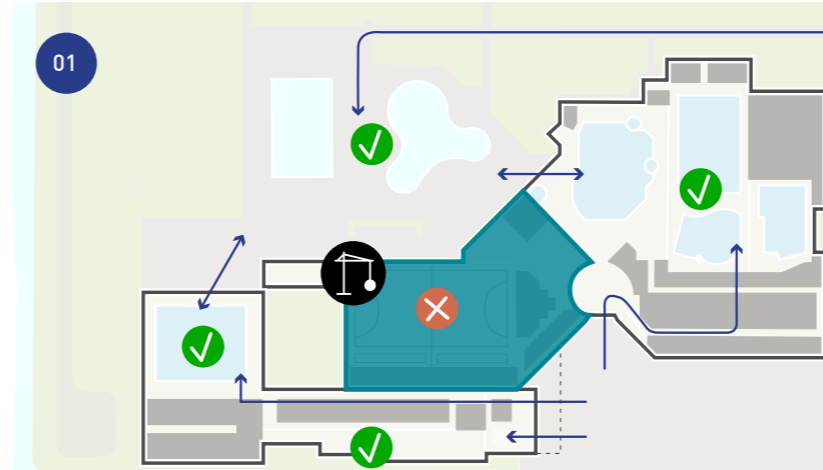


stap 1. renovatie bestaande bad, zwemmen in nieuwbouwbad (fase 1)

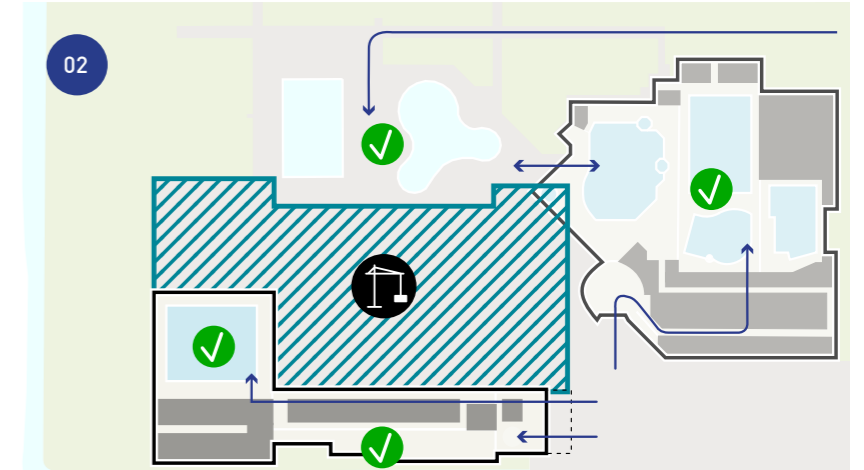


stap 2. in gebruikname

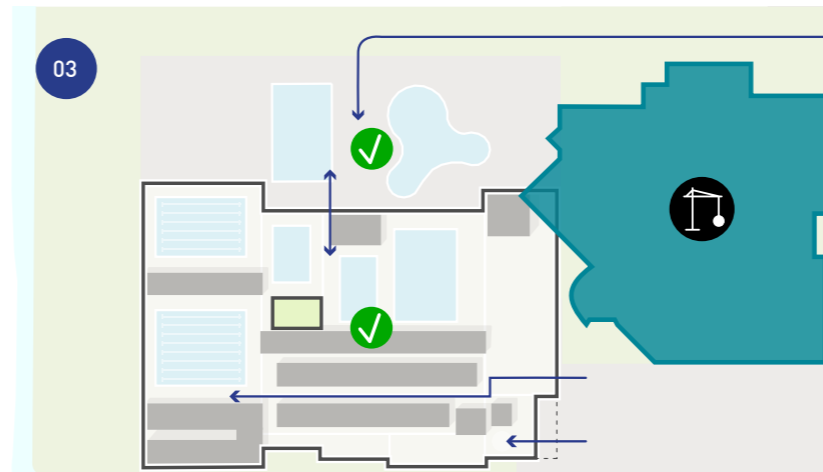
## variant B: nieuwbouw



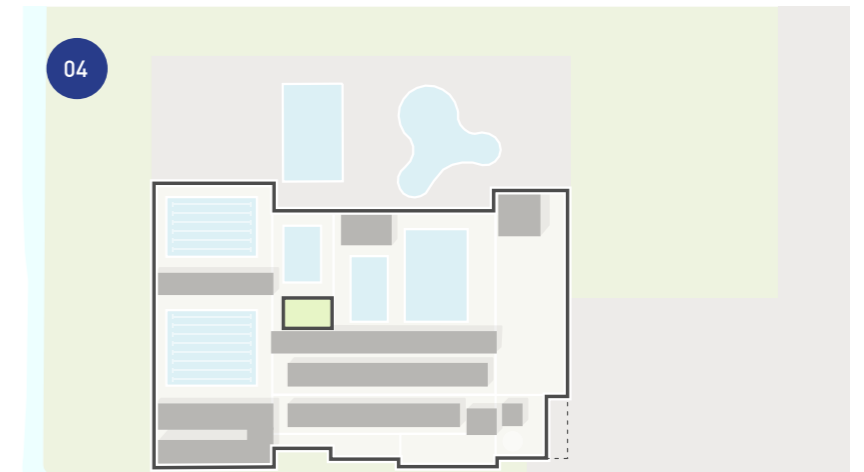
stap 1. sloop sporthal, alle baden blijven open!



stap 2. bouw nieuwe zwembaden, alle baden blijven open!

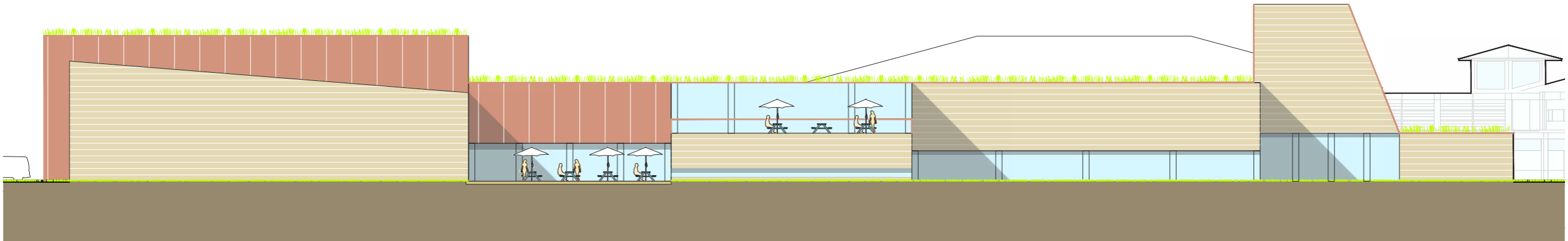


stap 3. sloop bestaande bouw, nieuwe baden in gebruik!



stap 4. aanleg terrein en totaaloplevering

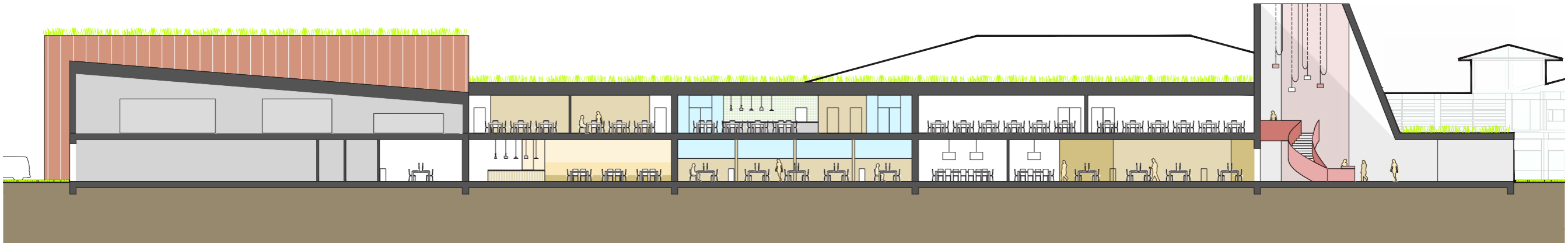
# materialisatie exterior.





het alzijdige gebouw gaat goed op in  
zijn groene omgeving.

# materialisatie interieur.











de houten afwerkingen zorgen voor  
een warme sfeer.







# duurzaamheidsvisie.





## Energietransitie: All electric zwembad

-  PV panelen op het dak met optimale oriëntatie
-  energiezuinige verlichting LED aanwezigheid en daglicht geregeld
-  hoogwaardige schilisolatie (gevel RC=8,0 / dak RC=8,0), triple beglazing in zwemzaal
-  CO2 neutraal en all-electric installatieconcept

-  optimale oriëntatie zwemzaal op zuid/west voor maximale warmtewinst
-  hemelwateropvang en hergebruik
-  centrale warmte opwekking met lucht-water warmtepompen in semi-buitenopstelling
-  binnenopstelling luchtbehandeling met HR WTW  $\geq 85\%$  met CO2, vochtigheids- en aanwezigheidssturing





## Circulair materiaalgebruik





-  geen overbodige materialen, constructie is afwerking
-  onderhoudsarme en demontabele gevelbekleding
-  hoogwaardige, duurzaam geproduceerde en onderhoudsarme gevelpanelen
-  onderhoudsarme en demontabele kleedcabines

-  circulaire en demontabele houten constructie en akoestische afwerkingen
-  hout met FSC-keurmerk
-  prefab bassins in C2C Geusselt beton met 100% betongranulaat.
-  afwerkingen vaste inrichting van hoogwaardig gerecyclede materialen







## Klimaatadaptie





-  groene daken voor verkoeling, aangenaam zicht, natuurinclusiviteit en waterbuffering.
-  zonwering d.m.v. screens en overstekken
-  maximaal behoud bestaande bomen door compact gebouw en optimale inpassing
-  snoeihout van het terrein wordt verwerkt in de takkenrillen

-  gevel met nestmogelijkheden voor vogels, insecten en vleermuizen, bijenkasten op het dak
-  waterpasserende verhardingen, wadi's en groene terreininrichting met bloemrijke beplanting.
-  regenwaterbuffering inzetten als speelelement en watergebruik landschap
-  lichte dakbedekking met koelend effect en bevordering rendement PV panelen

## Comfort, gezondheid en sociale

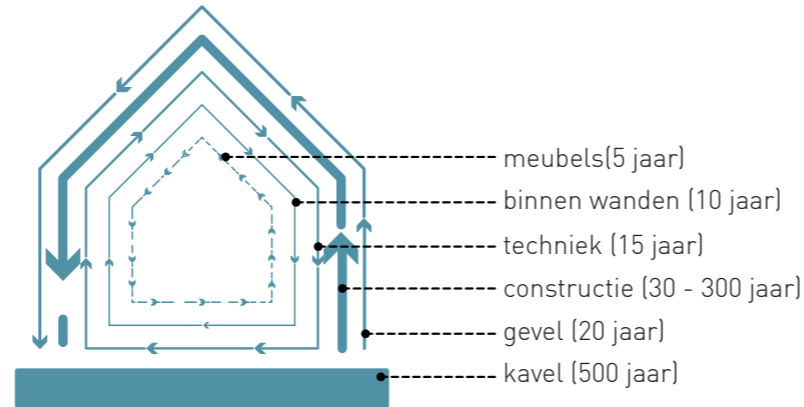
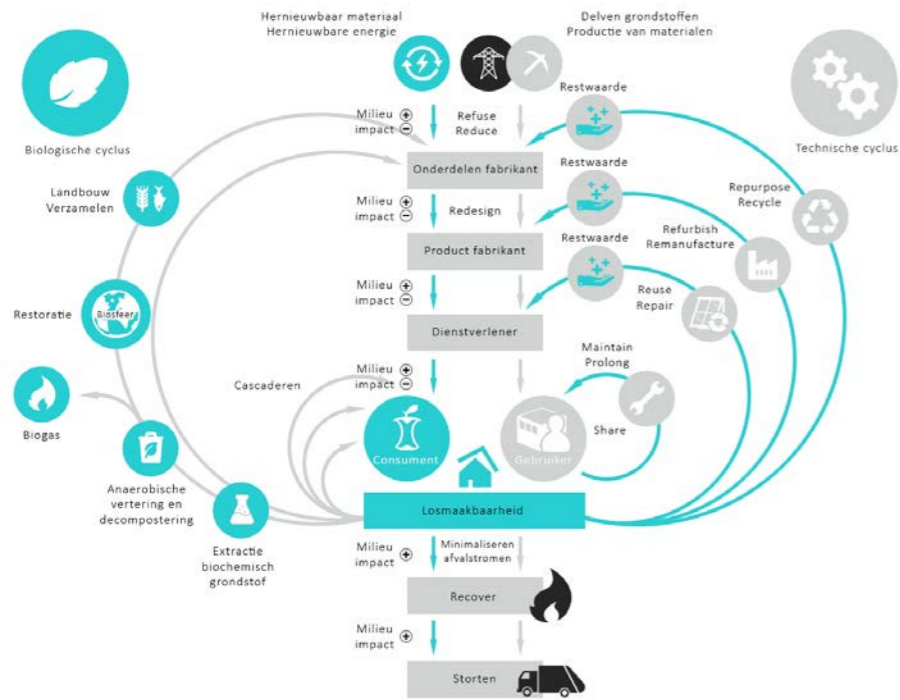
-  functies makkelijk compartimenteerbaar en direct van buiten toegankelijk
-  extra aandacht voor een goed akoestisch klimaat voor gebruikers en medewerkers
-  extra aandacht, overzicht en sociale veiligheid door grote hoeveelheid interne zichtrelaties
-  maximale daglichttoetreding door transparante gevels

## Toekomstbestendigheid en

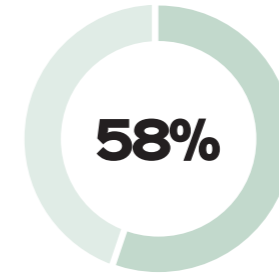
-  veel uitbreidingsmogelijkheden door compactheid gebouw
-  eenvoudige inkrimpingsmogelijkheden door schakeling van zwembaden en kleedruimten
-  inrichtingselementen multifunctioneel inzetbaar
-  entreegebied en horeca eenvoudig te combineren/scheiden, idem voor zwembaden

# circulariteit en meetbaarheid.

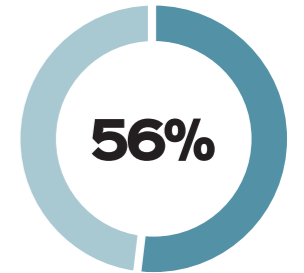
Circulariteit meten, toetsen en besturen



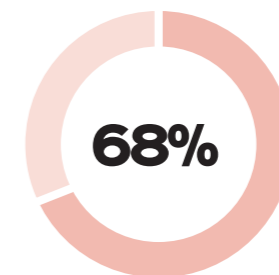
## Building Circularity Index (BCI)



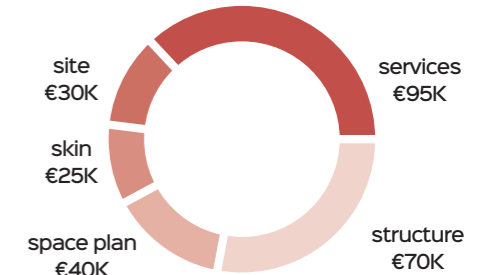
building circularity index



material circularity index



losmaakbaarheid index (LI)



milieu-impact

# integratie in het ontwerp.



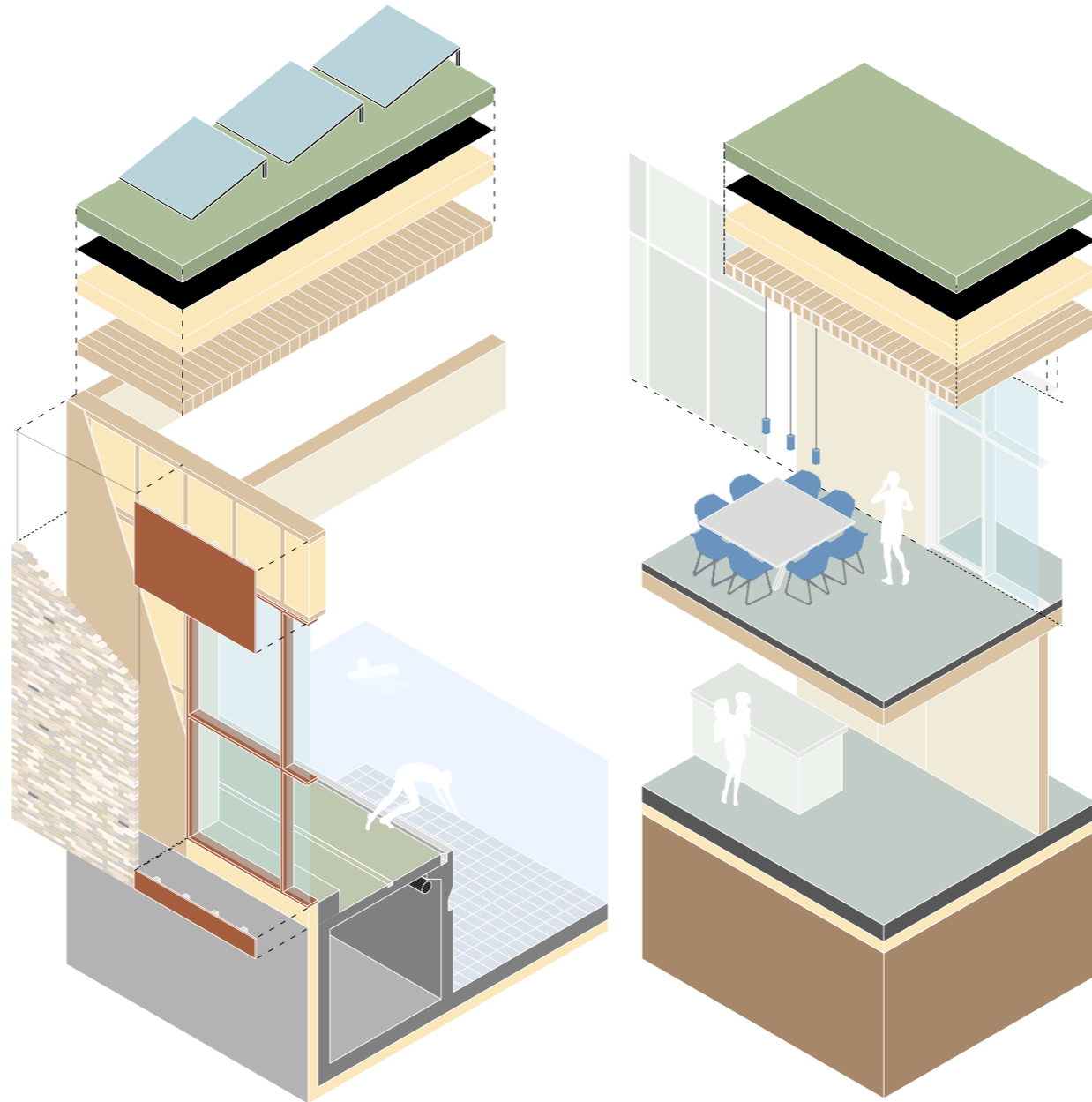
houten constructie



bakstenen gevel



Ecocrete



houten dak



CLT wanden



PET vilt

slangen+koenis  
architecten

bedankt voor uw aandacht!  
heeft u vragen?