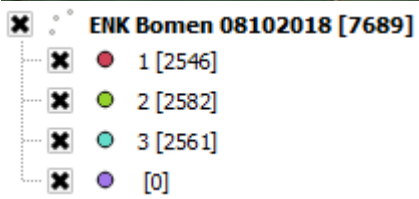
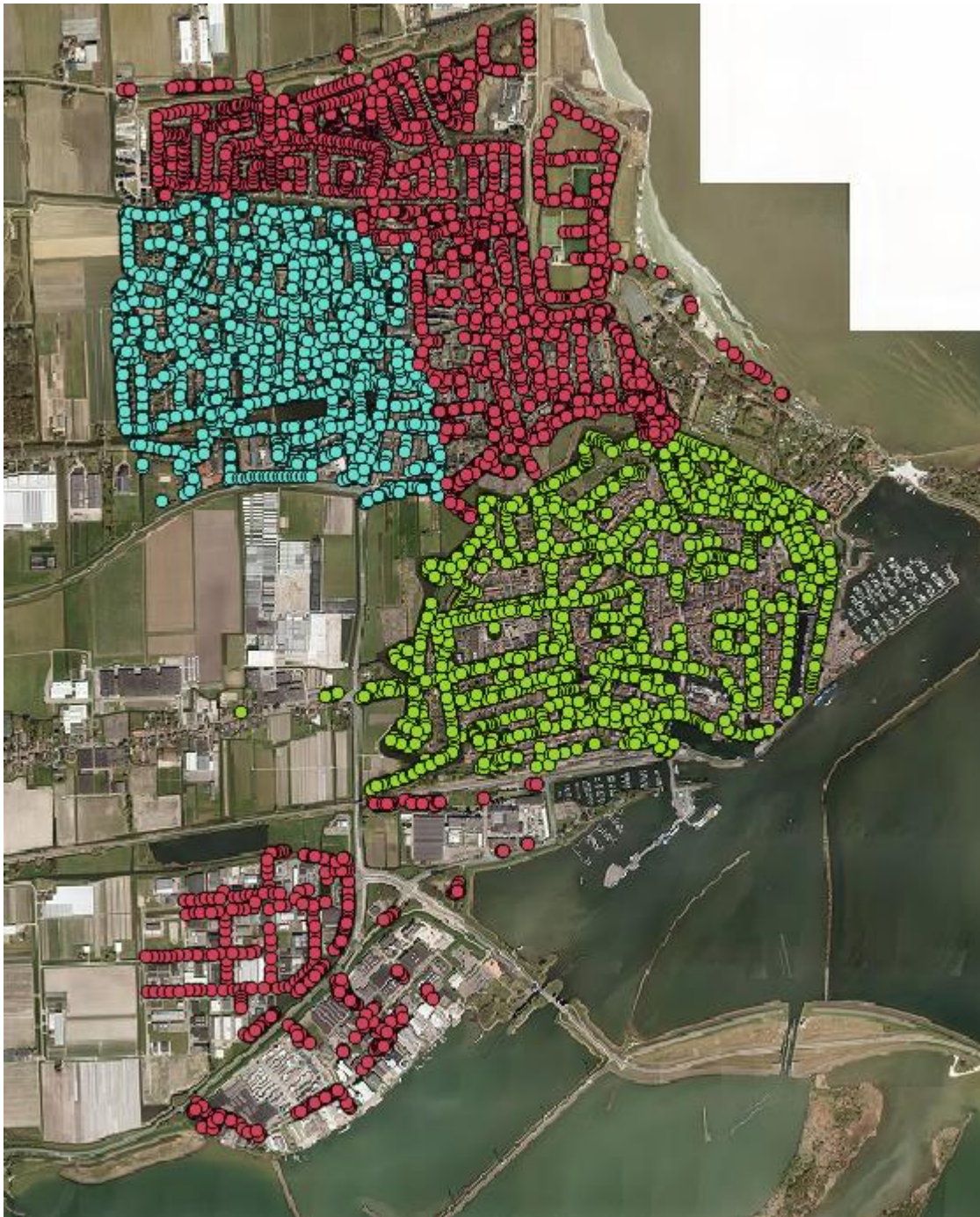


## **Areaal verdeling Bomen in 3 compartimenten t.b.v. Strategisch boombeheer.**

### **Opmerking**

Gegevens zijn gegenereerd op 10-10-2018. Daar mutaties een lopend proces betreft zijn er altijd afwijkingen tijdens aanbesteding en duur contract.





## Areaal compartiment 1 Enkhuizen



✕ ENK Bomen 08102018 [7689]

- ✕ 1 [2546]
- 2 [2582]
- 3 [2561]
- ✕ [0]

## Areaal compartiment 2 Enkhuizen



✕ ENK Bomen 08102018 [7689]

- ✕ 1 [2546]
- ✕ 2 [2582]
- ✕ 3 [2561]
- ✕ [0]



## Areaal compartiment 3 Enkhuizen





## Areaal compartiment 1 Stede Broec

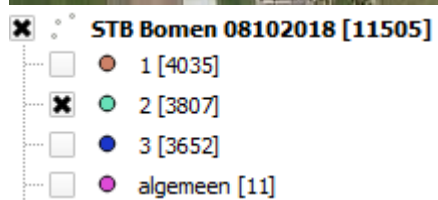
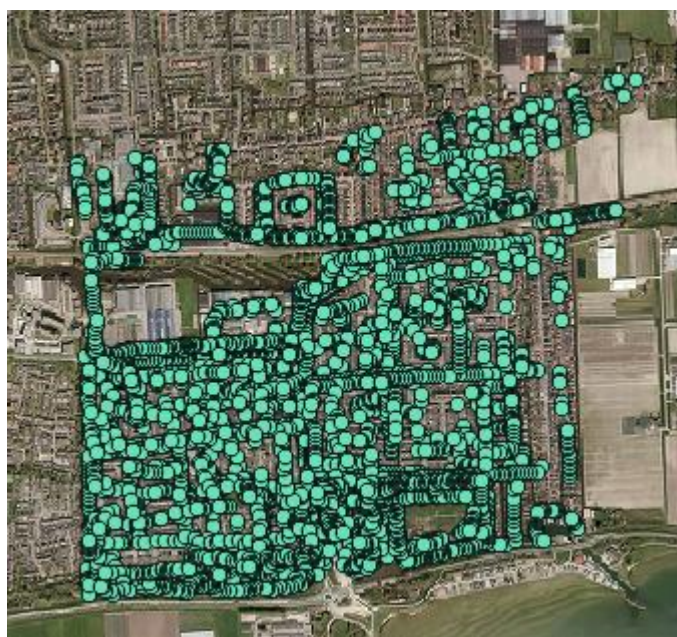


**STB Bomen 08102018 [11505]**

- ☒ 1 [4035]
- ☐ 2 [3807]
- ☐ 3 [3652]
- ☐ algemeen [11]



## Areaal compartiment 2 Stede Broec





## Areaal compartiment 3 Stede Broec



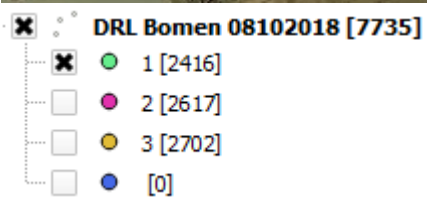
✕ STB Bomen 08102018 [11505]

- 1 [4035]
- 2 [3807]
- ✕ 3 [3652]
- ✕ algemeen [11]





## Areaal compartiment 1 Drechterland





## Areaal compartiment 2 Drechterland





### Areaal compartiment 3 Drechterland

