



Gemeente
Amsterdam
VGA Verzekeringen

Gemeente Amsterdam - VGA Verzekeringen





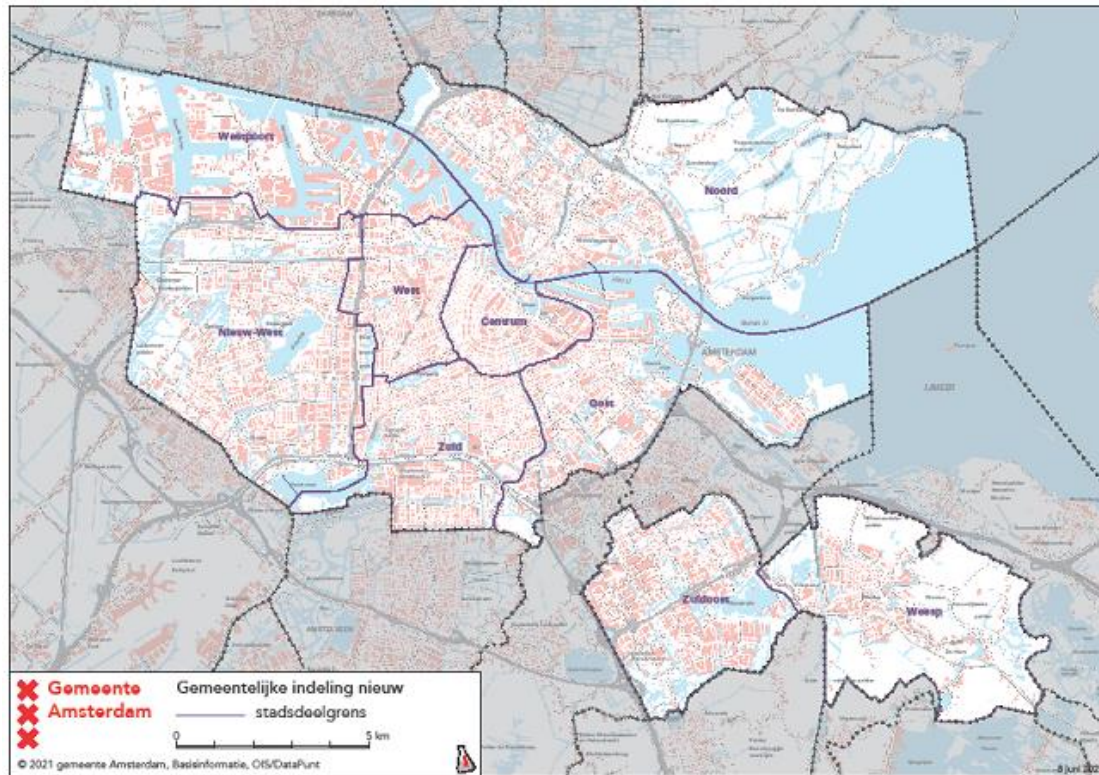
Amsterdam

- 881,933 inhabitants
- 474,875 households
- 21,949.00 hectares surface area (220 square kilometres)
- As from March 2022 Weesp is part of the municipality





The political/municipal organisation



- Mayor and aldermen
- 16,000 civil servants
- 8 districts
- 40 municipal services and companies
- Participations (**GVB, Waternet, Port of Amsterdam,)**
- Afval energie bedrijf (company involved in waste and energy) is **not** covered under this program (company has been sold to Rotterdam)





VGA Insurance

VGA is the center of expertise for operational risks,
for the municipality of Amsterdam and its participations

Ambition 2025

The municipality of Amsterdam and her participations manage their risks and achieve the best financial results as VGA is the Center of Expertise for risk management, insurance and claims management.

Main focus areas:

- Risk management
- Strengthen relationship with Clients (Municipality of Amsterdam)
- Strengthen relationship with Global Reinsurers
- Optimise claims management
- Digitalisation





Gemeente
Amsterdam
VGA Verzekeringen

Team VGA



Mirjam Heijnen
Director VGA



Karina Broersen
Manager Insurance Team



Medy Verhoef
Risk Management



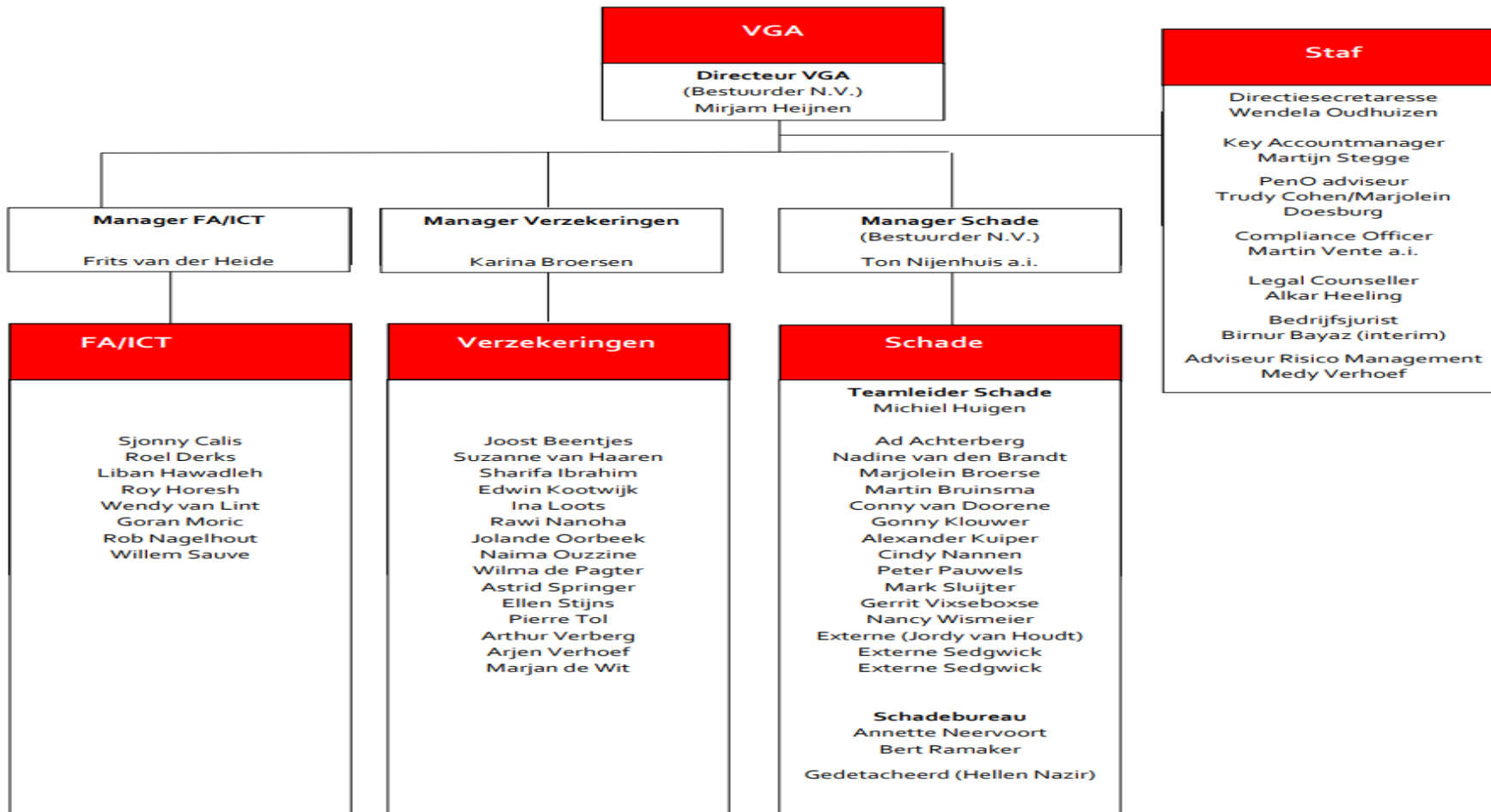
Martijn Stegge
Key Account Manager



Joost Beentjes
Senior Underwriter



Organisation chart





VGA: role and tasks



- Two organisations: Municipal Insurance Services and *N.V. Verzekeringsbedrijf Groot Amsterdam* (= Greater Amsterdam Insurance Company)
- Two supervisory authorities: DNB and AFM
- Central purchasing responsibilities for insurance and claims processing within Amsterdam and the participations
- Competitively priced provider of private insurance for civil servants



VGA: facts at a glance

- Non-life insurance company for property, liability and motor vehicles
- Broker for mainly construction and private lines
- Founded by the municipality of Amsterdam in 1920 as a fire compensation fund, later: general insurance fund
- Clients may also report and register claims online
- Profits flow back into the municipality's general resources

<https://www.amsterdam.nl/vga/bedrijfsfilm/corporate-movie/>

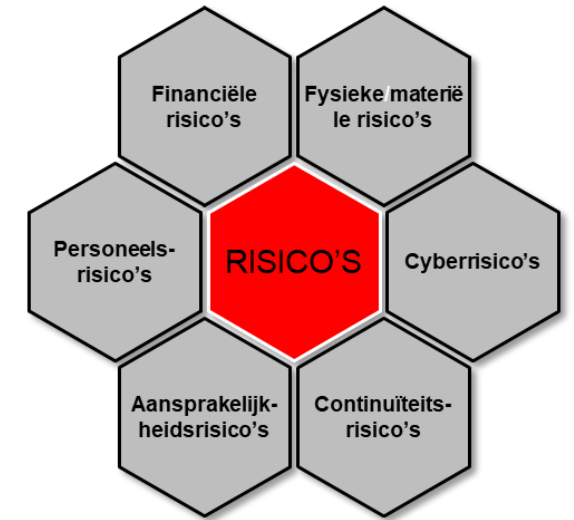




VGA - In control

VGA focuses on property risks together with the operational processes and resources. VGA gives substance to risk management and focuses on reducing claims by :

- Executing a risk engineering program as part of the reinsurance contract. A total of 15 risk objects/buildings are inspected in consultation with the leading reinsurer on the primary reinsurance.
- VGA's risk manager monitors and analyses claims and discusses these internally with the client teams.
- The Employees of the insurance team of VGA as well as the Board of VGA provide insight into risks and discuss prevention of losses with the clients.
- By centralising the real estate portfolio within the municipality, uniform procedures and goals may easily be achieved.





In control II (property insurance program)

- Risk management program for schools including inspections carried out by Marsh Risk Consultants
- Annual inventory of property
- Annual inventory of sums insured (partial valuation and/or appraisal)
- Annual inventory of the presence of solar panels
- Risk assessment when installing solar panels
- SCIOS Scope 12 for powers of > 5 KvA is mandatory
- Warranty clauses for solar panels, outdoor storage, fire-hazardous work, electrical installations
- Experienced claims handlers / reputable loss adjusters (Sedgwick)



The property portfolio:

Buildings and contents	€ 8,605,420,015	
	1,585 locations	397 schools
		20 locations above € 50,000,000
Rolling stock	€ 432,976,358	306 vehicles
	306 vehicles	78 underground trains
		228 trams
Vehicle fleet	€ 187,612,933	243 buses
	2,575 vehicles	78 fire trucks





Claims overview

A specified claims overview can be found in enclosure 7 of this tender





Insurance Cover:

- Comprehensive cover for buildings/contents/other property
- Fire, aircraft and storm cover for rolling stock (trams/underground trains)
- Fleet Fire cover (motor vehicles)
- Warranty against underinsurance

Primary cover: up to € 50,000,000

Excess cover : from € 50,000,000 to € 400,000,000





Top 10 locations above € 50,000,000:

Insured	Occupancy	Sum insured		
		Buildings/inventory	Maximum value Rolling stock	Total
Stopera*	Town hall and Theatre	€ 304,492,451		€ 304,492,451
Artis Magistra*	Zoo	€ 254,561,907		€ 254,561,907
GVB Havenstraat*	Tramdepot	€ 60,197,972	€ 157,780,000	€ 217,977,972
GVB Diemen**	Tram/Metro depot	€ 97,918,032	€ 73,200,000	€ 171,118,032
Stedelijk Museum*	Museum	€ 171,062,058		€ 171,062,058
Stadsschouwburg*	Theatre	€ 111,306,786		€ 111,306,786
Stadsarchief*	Archive	€ 90,330,464		€ 90,330,464
Public Library*	Library	€ 88,827,429		€ 88,827,429
GVB Garage West**	Bus depot	€ 31,226,525	€ 49,720,000	€ 80,946,525
BIM huis*	Music Centre	€ 72.856,143		€ 72,857,143
* Inspected in 2022				
** Inspected in 2019				



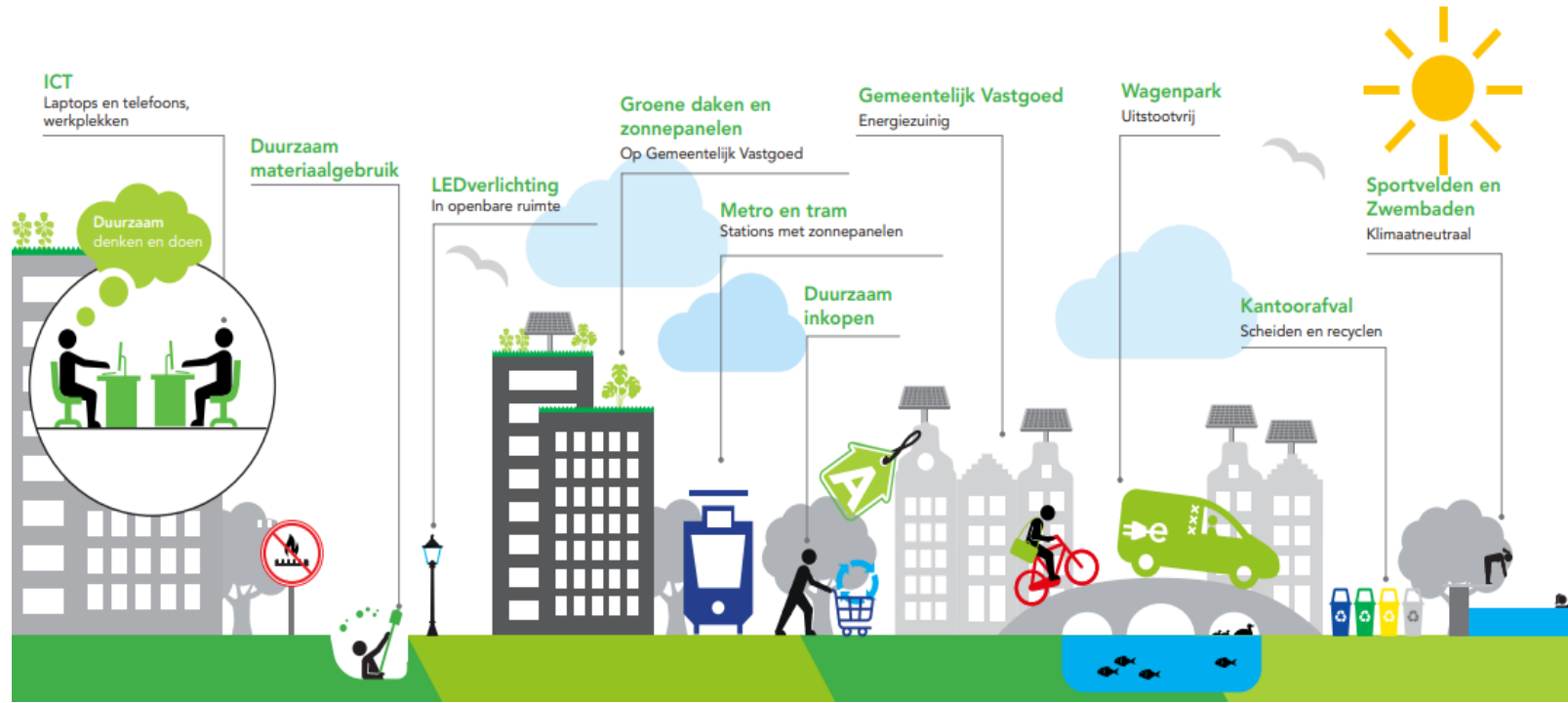


Sustainable goals city of Amsterdam



Green Office

- Green Office accelerates the sustainability transition by monitoring, advising and stimulating sustainable thinking and doing within the organisation. The 'Implementation Agenda Towards a Sustainable Organisation 2020-2025' sets out the path towards a fully climate-neutral organisation by 2030. Green Office reports annually on the progress of this sustainability improvement.
- Sustainability report 2022



2030 ambitions:

- Aiming at fully zero-emission town
- Has a sustainable own organisation
- Use 50% less new raw materials
- 55% less CO2 emission compared to 1990



Sustainability

- **GVB**

GVB replaces diesel buses with electric buses.

There are currently 44 electric buses, and 31 more will be added in the summer. In 2023, 84 buses will follow, with the majority of the fleet consisting of electric buses. The diesel fleet must be completely replaced by 2025.

- **Municipal Real Estate**

Municipal Real Estate has installed more than 650 solar panels in 2021.

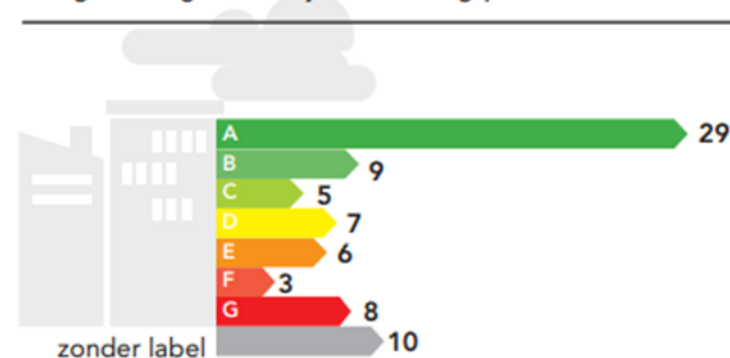
In the near future, another 2,000 panels will be installed on 25 municipal roofs.

- **Facilities Office**

Vehicles that are in use through Leaseplan are already electric.

When replacing self-managed vehicles, the fuel vehicle is replaced by an electric vehicle.

Energielabels gemeentelijke huisvestingspanden



Toename zonne-energie op gemeentelijk vastgoed:

