




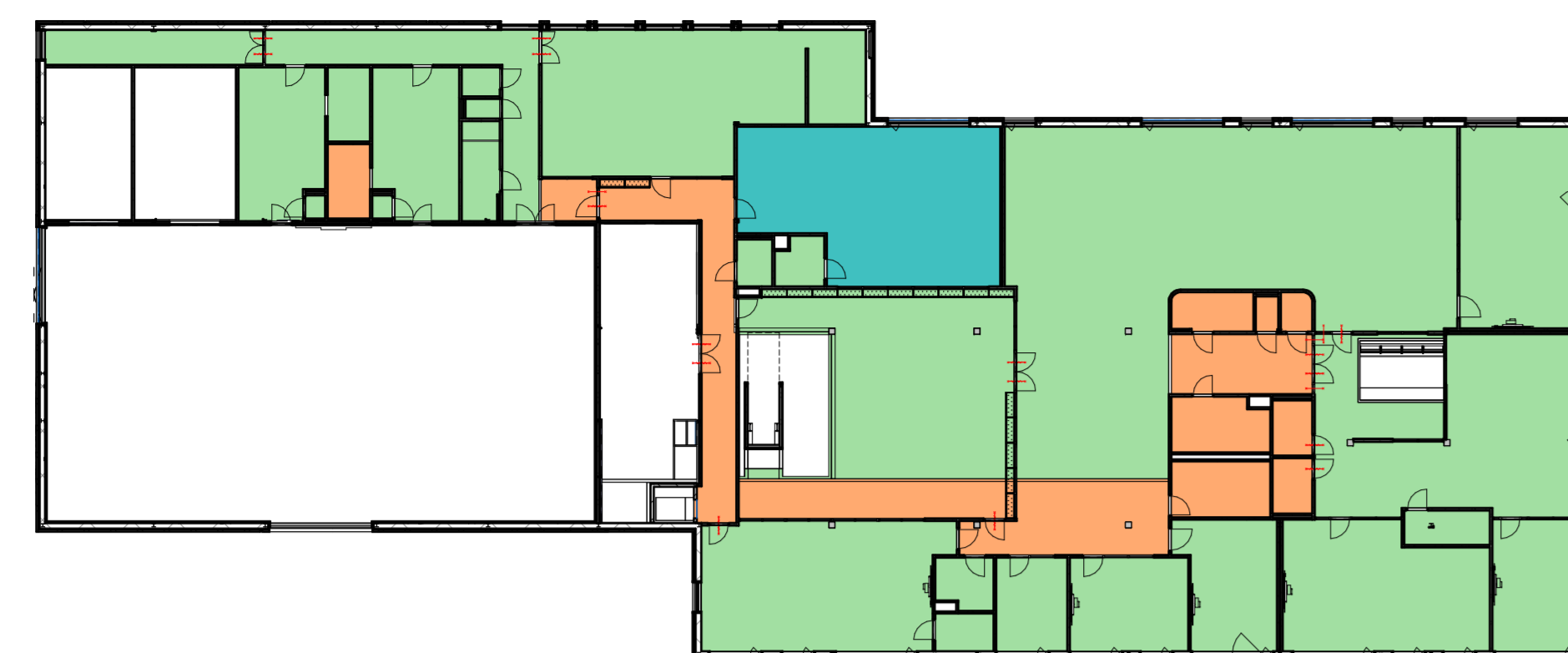


Gebruikte bronnen:
 Constructie: WSP - 05.05.2022
 W-installatie: Fore Installatie - 05.05.2022
 E-installatie: Prime Advice - 11.02.2022

RENVOOI PLAFONDPLAN

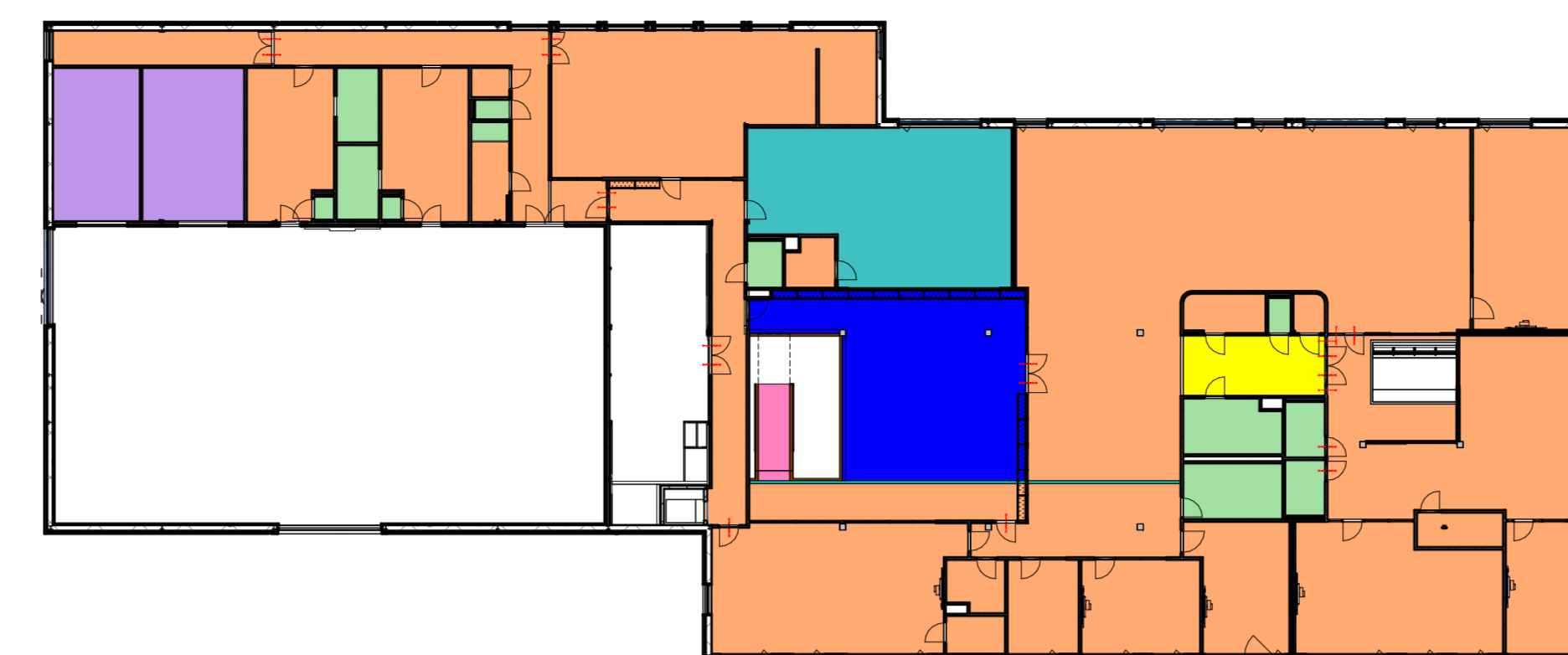
INSTALLATIE

-  Positie langwerpig armatuur
-  Positie smal armatuur
-  Positie spot
-  Positie vluchtroute aanduiding
-  Positie rooster
















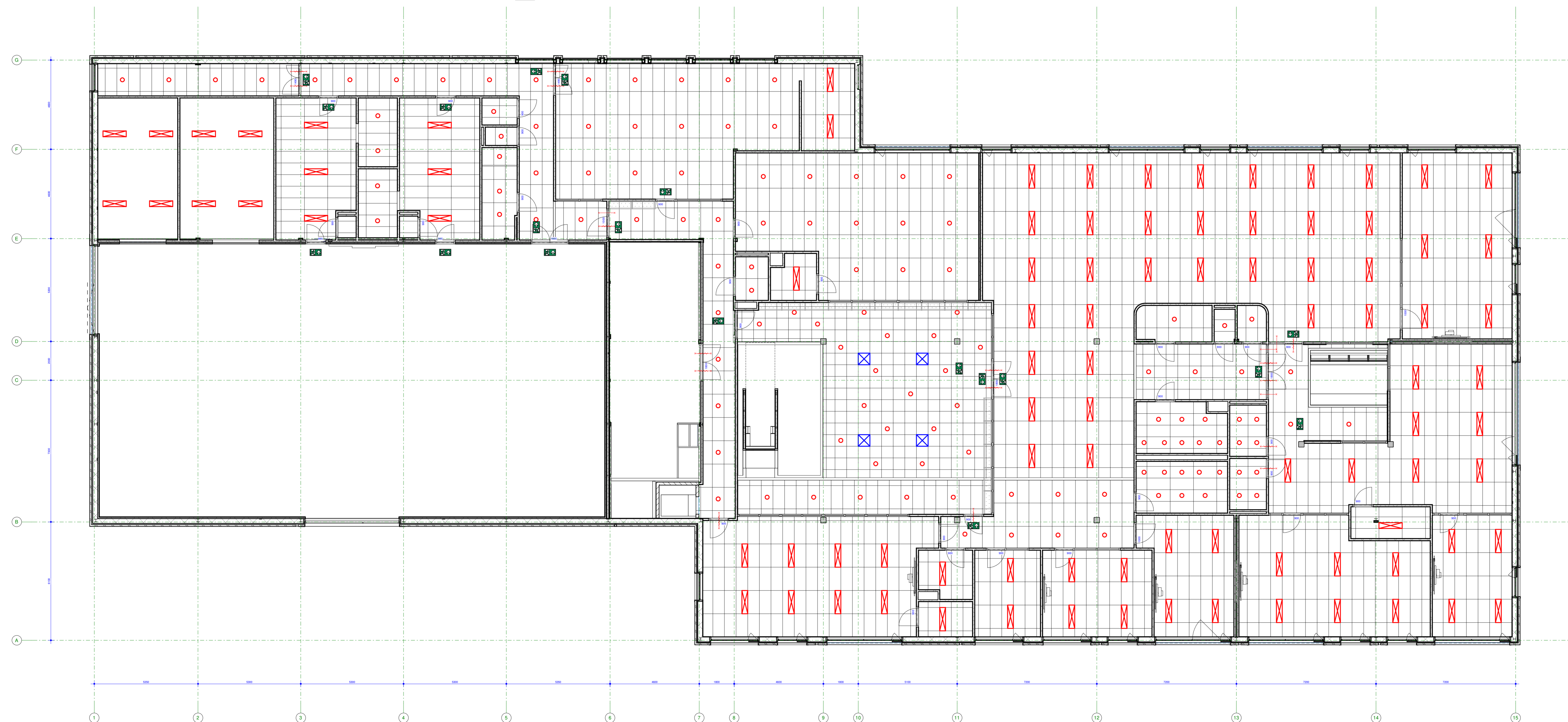
Plafondhoogtes

-  2900 +vl
-  3200 +vl
-  2700 +vl
-  2500 +vl



plafond types

-  P.01
-  P.02
-  P.03
-  P.04
-  P.05
-  P.06
-  P.07
-  P.08
-  P.09
-  P.10
-  P.11
-  P.12
-  P.13



visuïsalisatie ter illustratie, geveltekening is leidend

gewijzigd
 25.04.2022 datum
Scholencomplex Landtong Amstelveen project
 Landtong 8, 10 en 12, Amstelveen: adresgegevens
 Gemeente Amstelveen: opdrachtgever

Plafond 1e verdieping onderdeel
 1 : 100 schaal

4587-TO-810 project- en tekeningnummer
 Technisch Ontwerp: projectfase

F. (Frans) van Heemst: projectmanager
 H.S. (Harwin) Meerkerk: getekend

RoosRos Architecten
 L.J. Costerstraat 2 | 3261 LH
 Oud-Beijerland

0186 69 15 80
 info@roosros.nl
 www.roosros.nl

DEFINITIEF

ROOSROS
 ARCHITECTEN