

**P-101**  
Absorber  
Bottom Pump

**C-101**  
Absorber  
Column

**V-106**  
Sump  
Vessel

**P-102**  
Absorber  
Bottom Pump

**C-102**  
Stripper  
Column

**HE-101**  
Heat  
Exchanger

**HE-102**  
Cooler

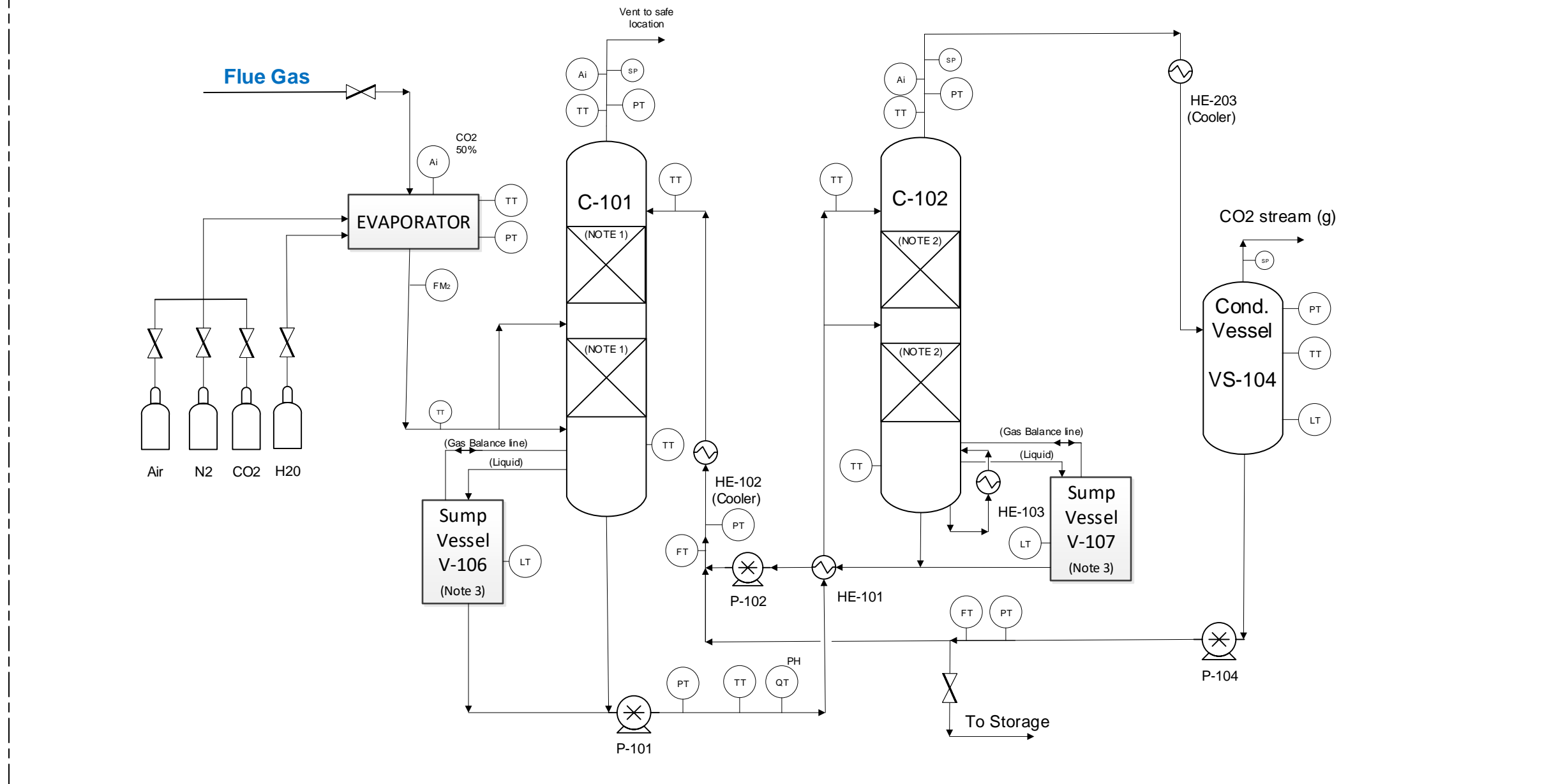
**HE-103**  
Electrical  
Heater

**V-107**  
Sump  
Vessel

**VS-104**  
Cond.  
Vessel

**P-104**  
Transfer  
Pump

## CO<sub>2</sub> Capture- Direct Air Capture with Stripper



0A	25-AUG-2020	ISSUED FOR REVIEW
0	10-AUG-2020	ISSUED FOR INFORMATION
REV	DATE	DESCRIPTION

**TNO** innovation  
for life

Preliminary-Process Flow Diagram

Project: xxx	BY: GC
SCALE: NONE	CHECKED: RV
DATE: 19-OCT-2020	APPROVED: ML

DRAWING NO.	SHEET NO.	REV.
60-DWG-10XX	1	0A