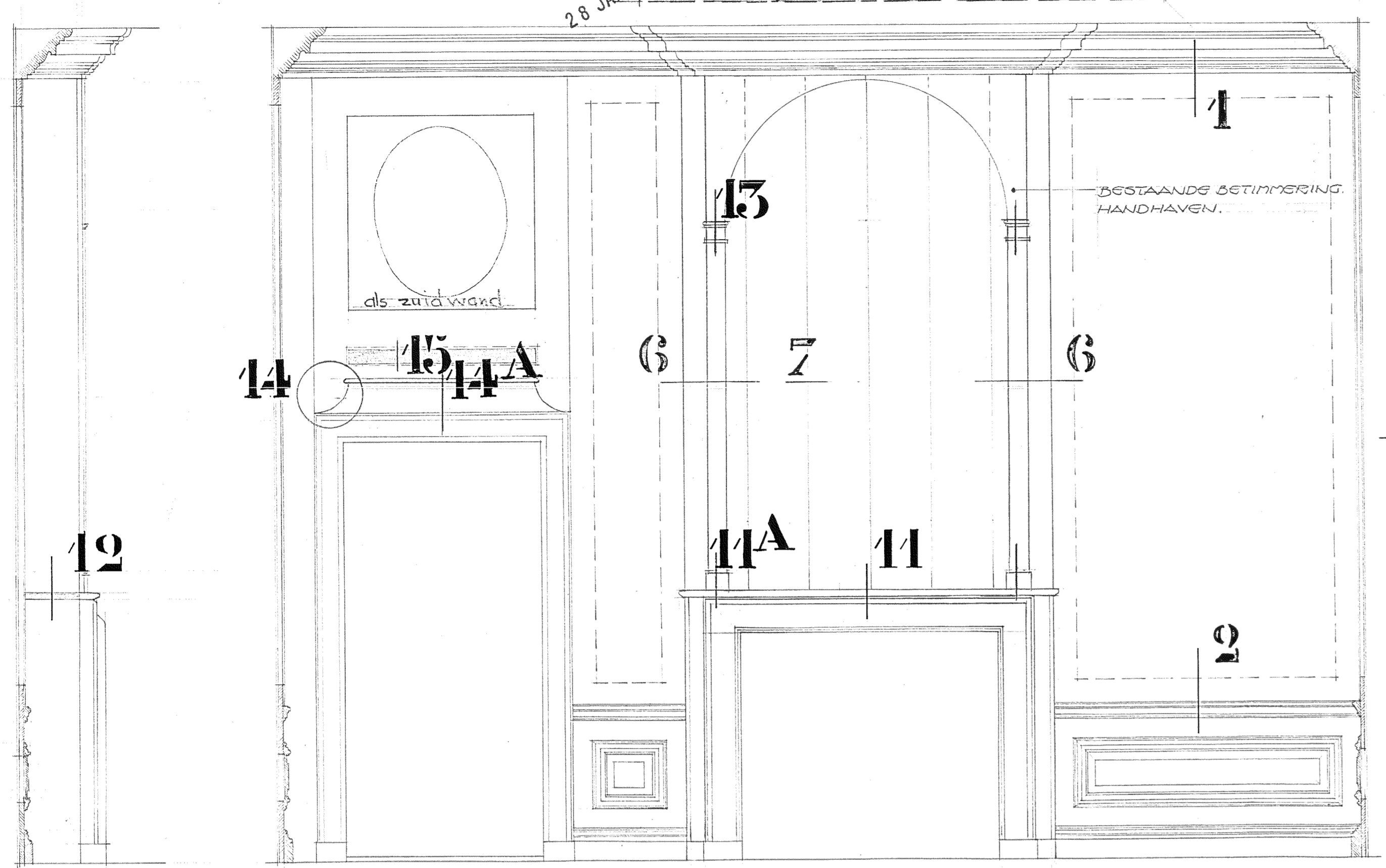
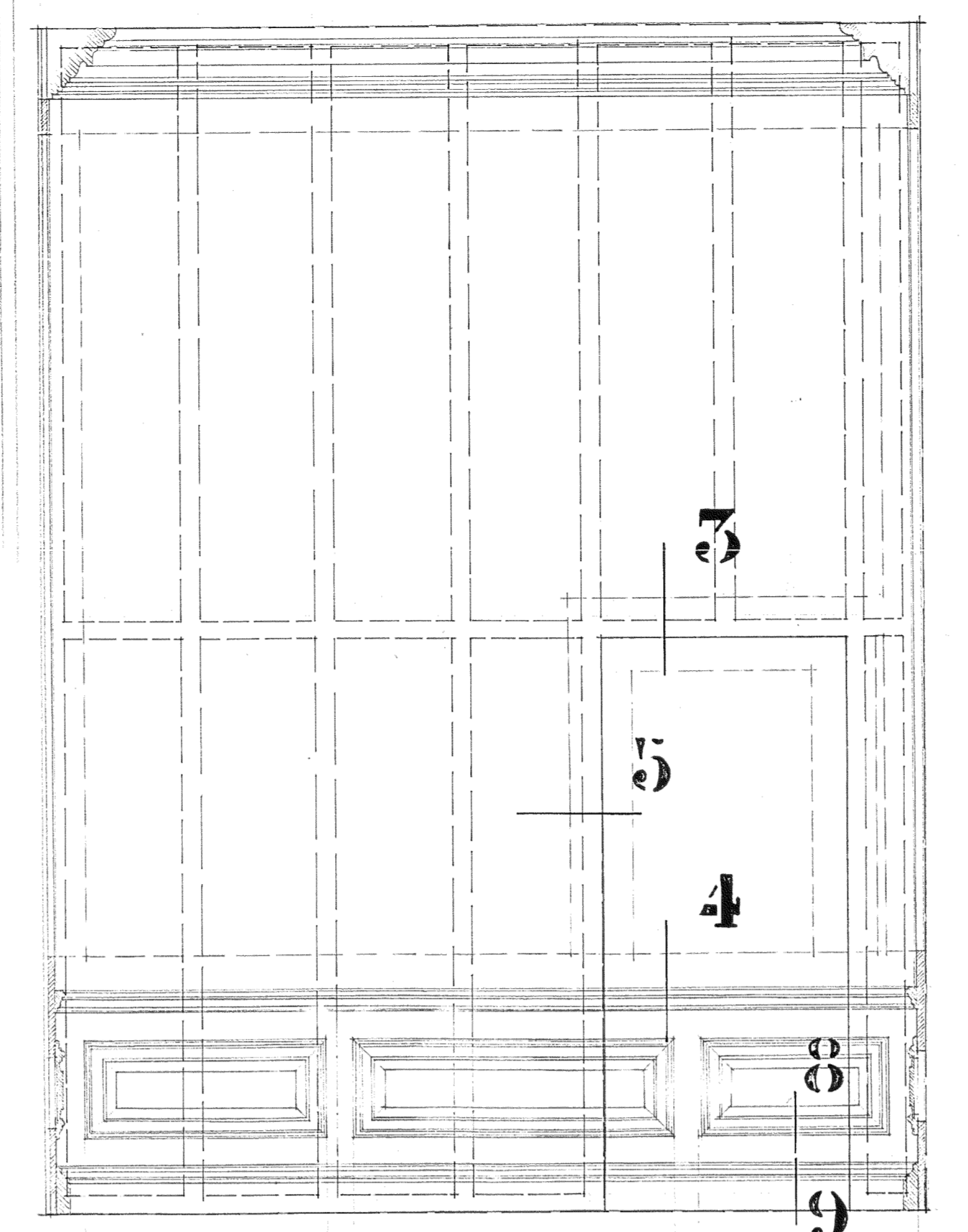
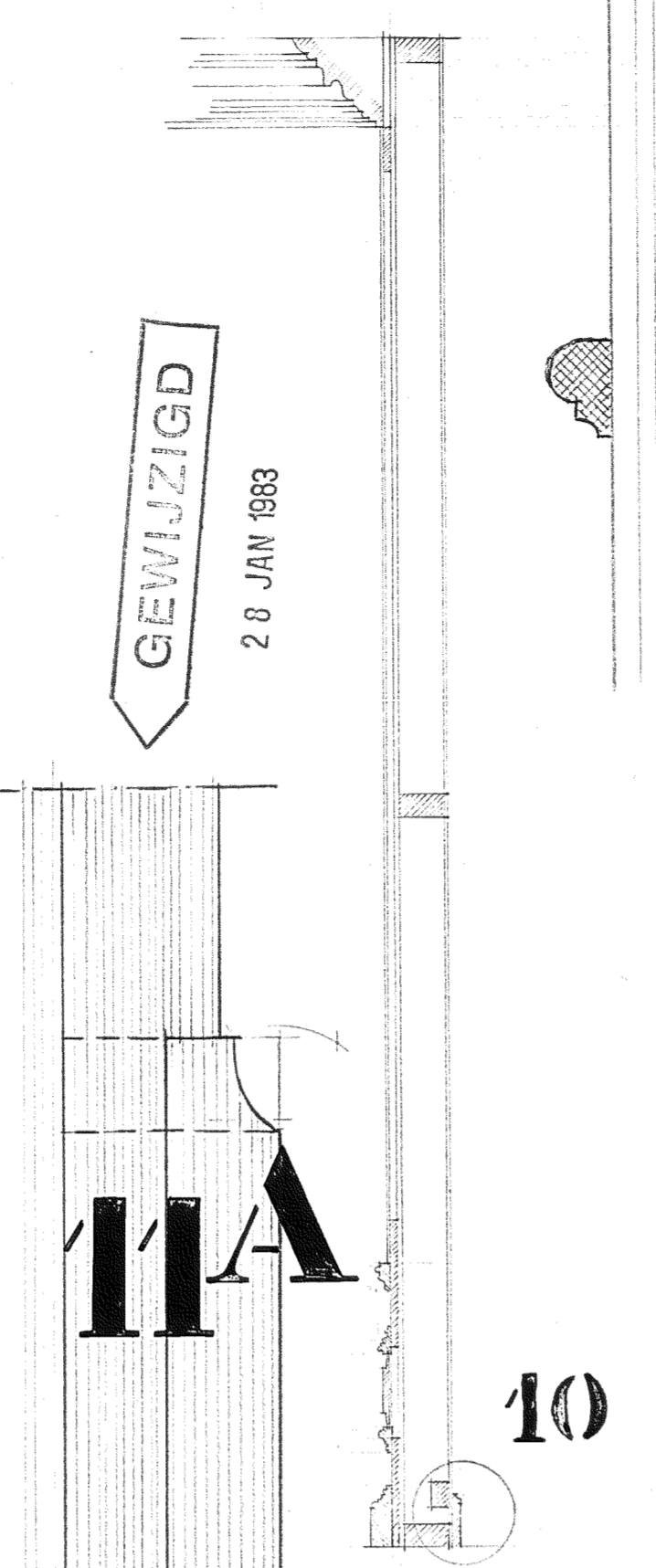


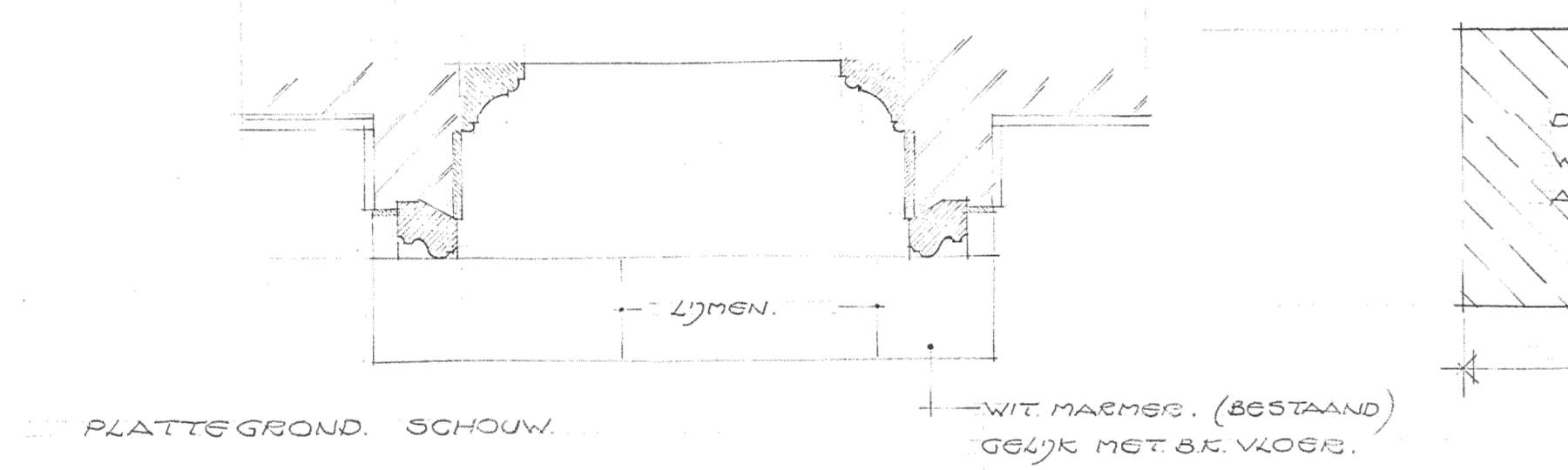
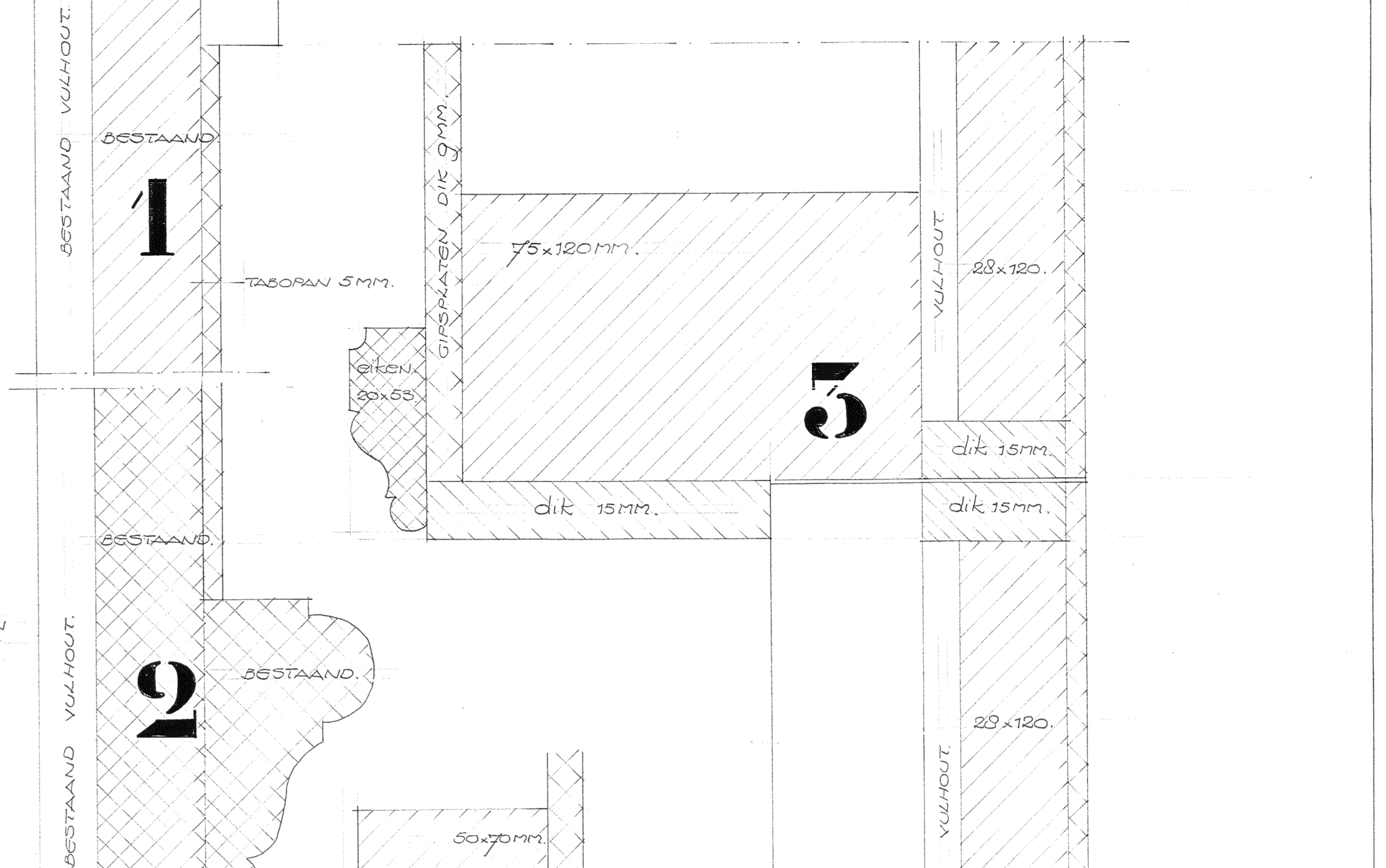
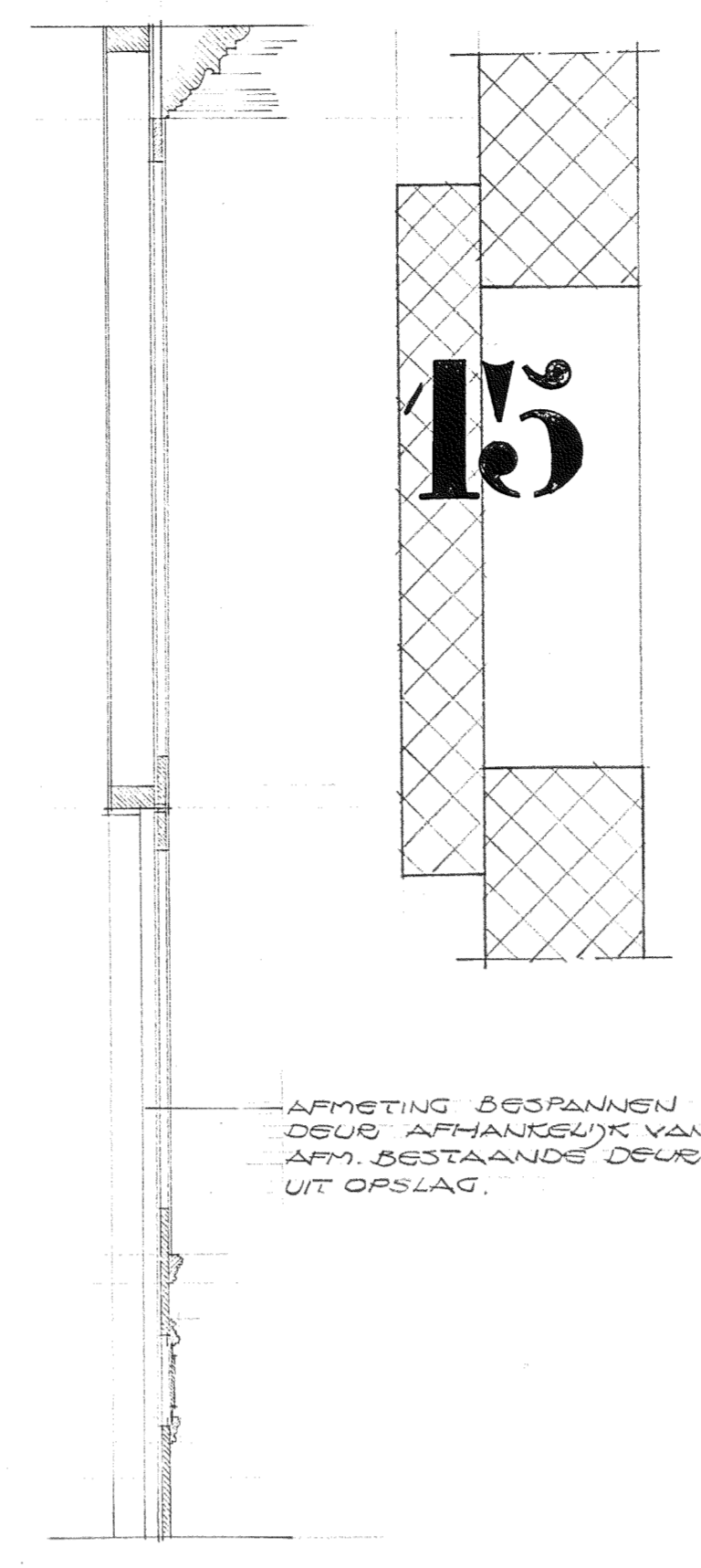
GEWIJZIGD
28 JAN 1983



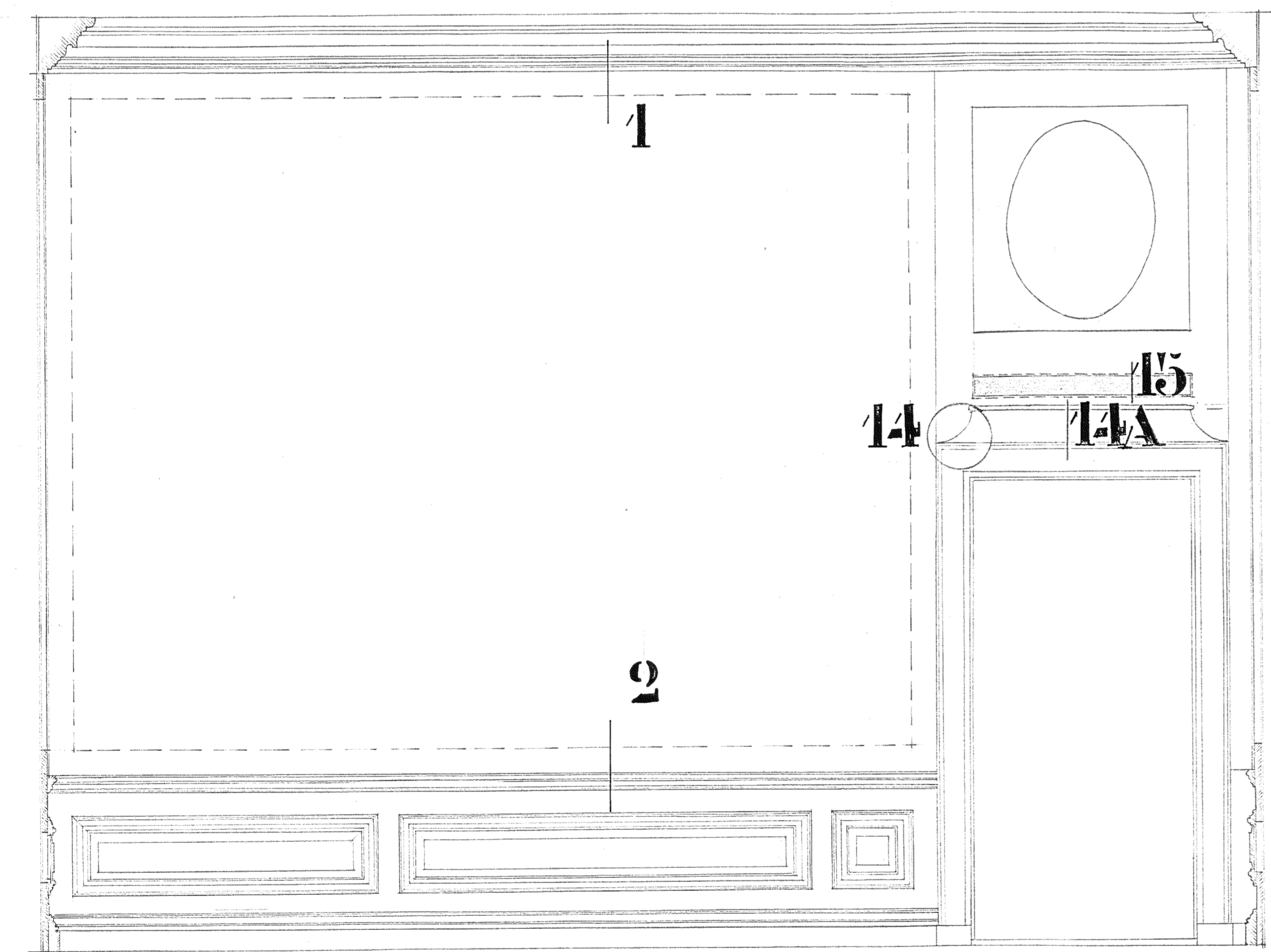
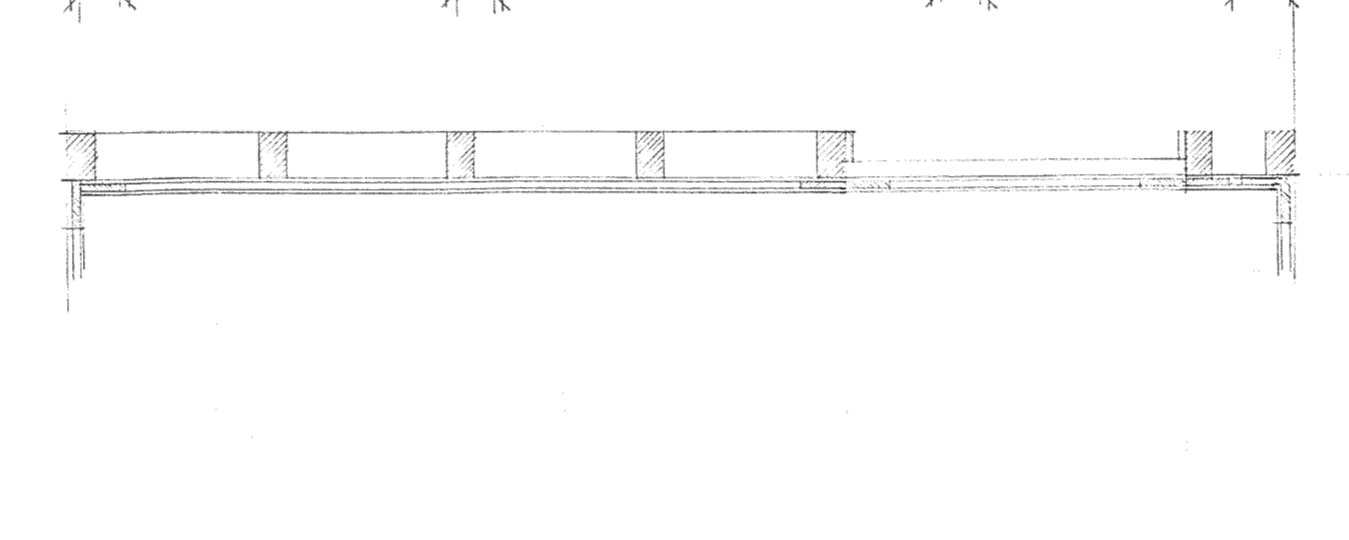
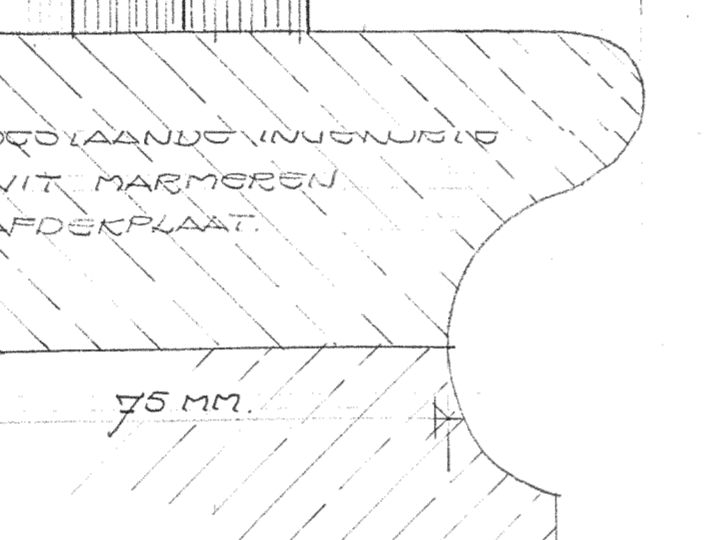
Noordwand



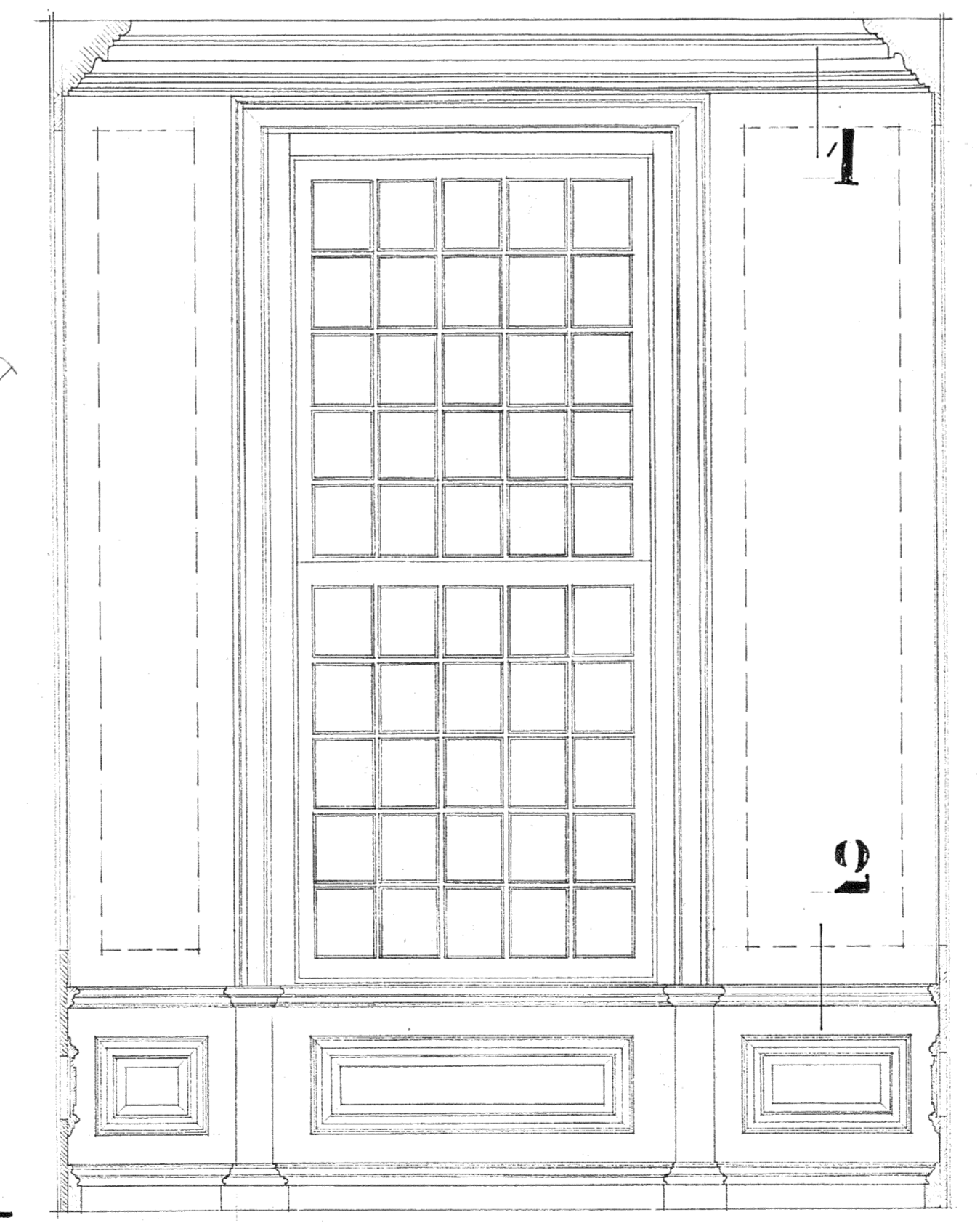
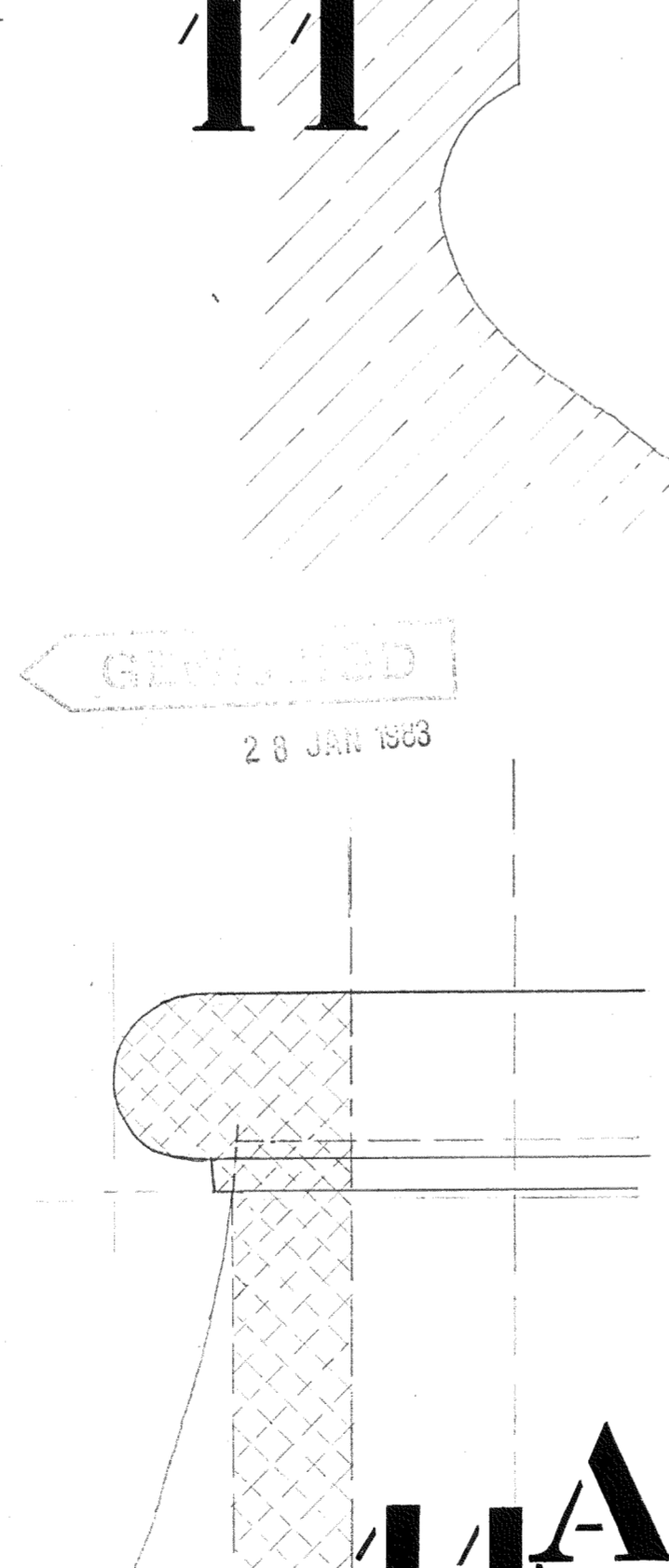
Oostwand



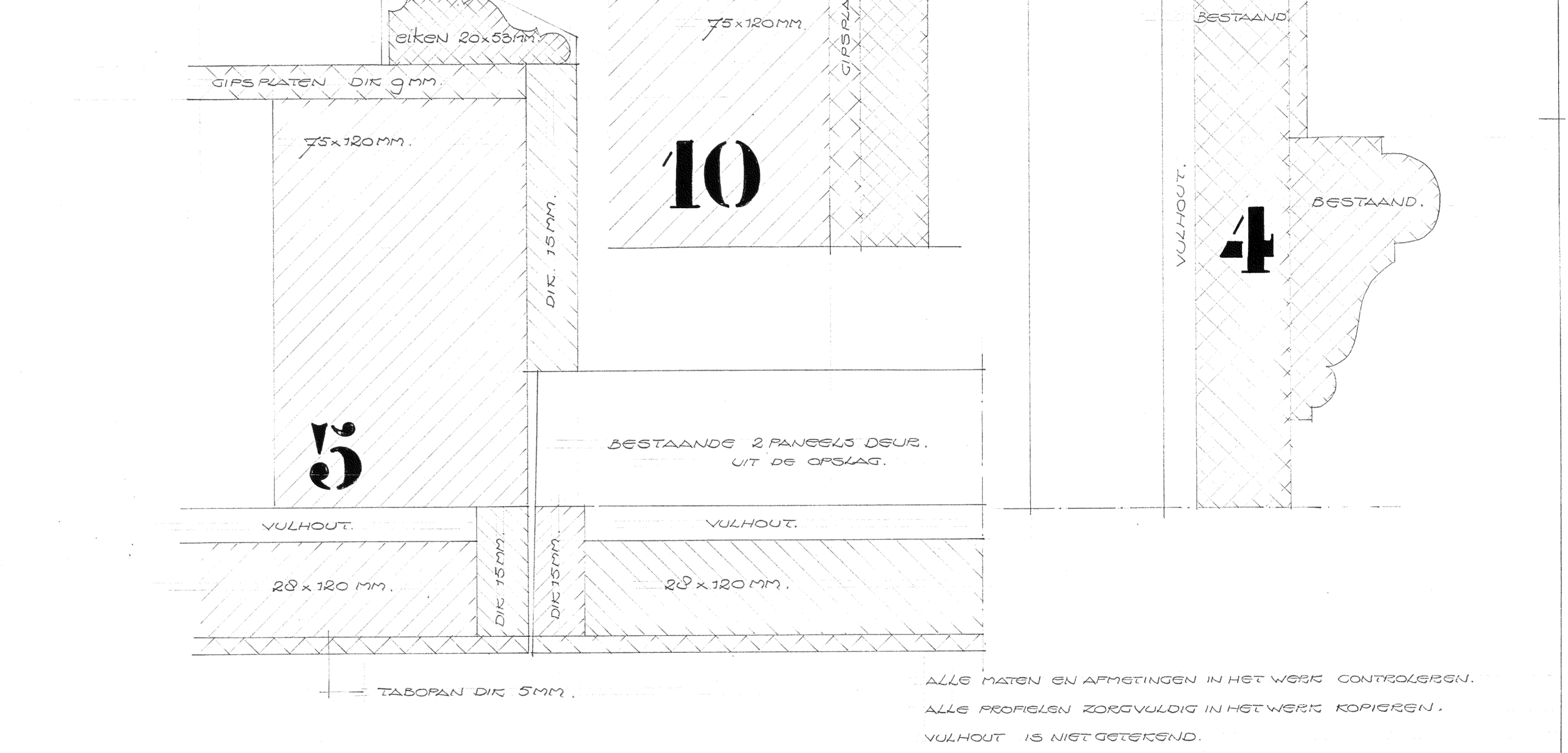
PLATTEGROND SCHOUW.



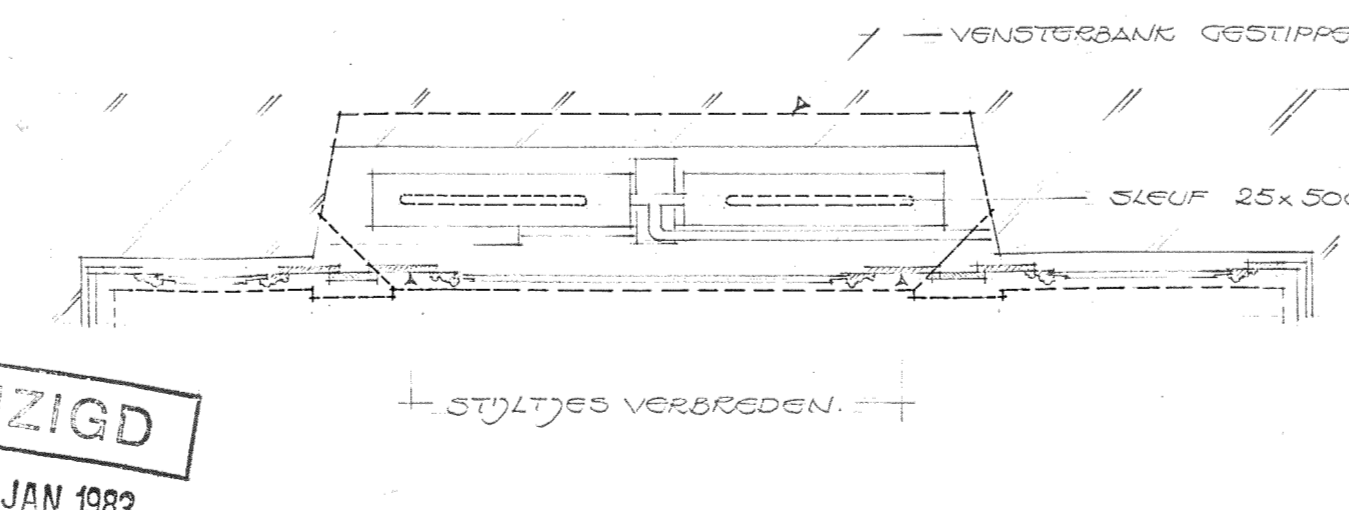
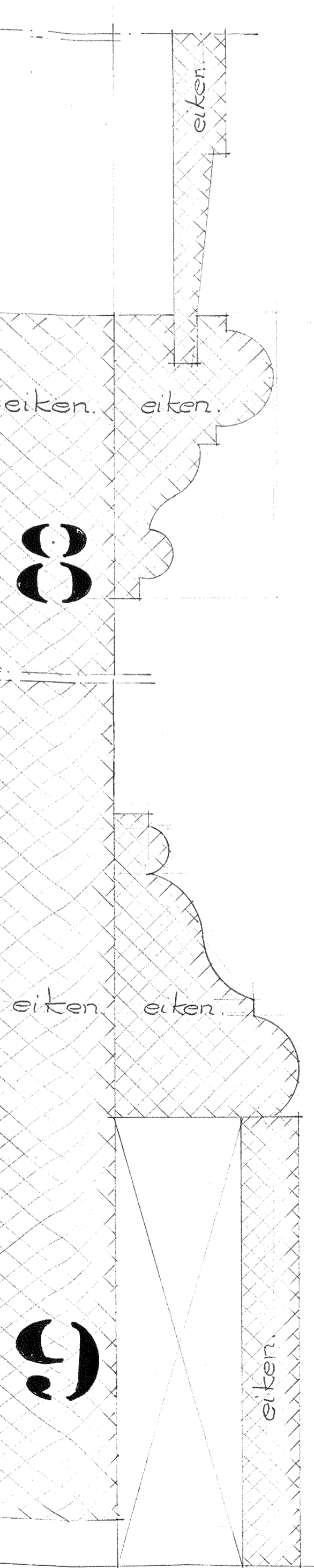
Zuidwand



Westwand



ALLE MATEN EN AFMETINGEN IN HET WERK CONTROLEREN.
 ALLE PROFIELEN ZORGVULDIG IN HET WERK ROPIEREN.
 VULHOUT IS NIET OETEBOND.
 HOUT VERBINDINGEN ALS BESTAAND.
 LAMBDEERING TE MAKEN VAN 1^o SOORT RECHTORADIC EN
 SPINTV^o EIKENHOUT (DROOGTEKLASSE II).
 ALLE IN HET ZICHT Blijvende (Nieuwe) DELEN MET DE
 BLOKSCHAAP OPSCHAVEN.



GEWIJZIGD
28 JAN 1983

RIJXSCHOUWENDEEST HOOFDFAK-BOUW
 RIJSMUSEUM FALES MET 100
 CORPS DE LOGIS + PAVILJOENS
 WANDAZICHT RUIMTE 336
 SCHAAL: 1:200 WERKTEKENING
 WERK: 1307 O.D. 25-10-79
 MAAT: 25x115 GETH. WZ79
 VAN ASBECK ARCHITECT DRIEBERGEN