

OOSTERPARK AMSTERDAM

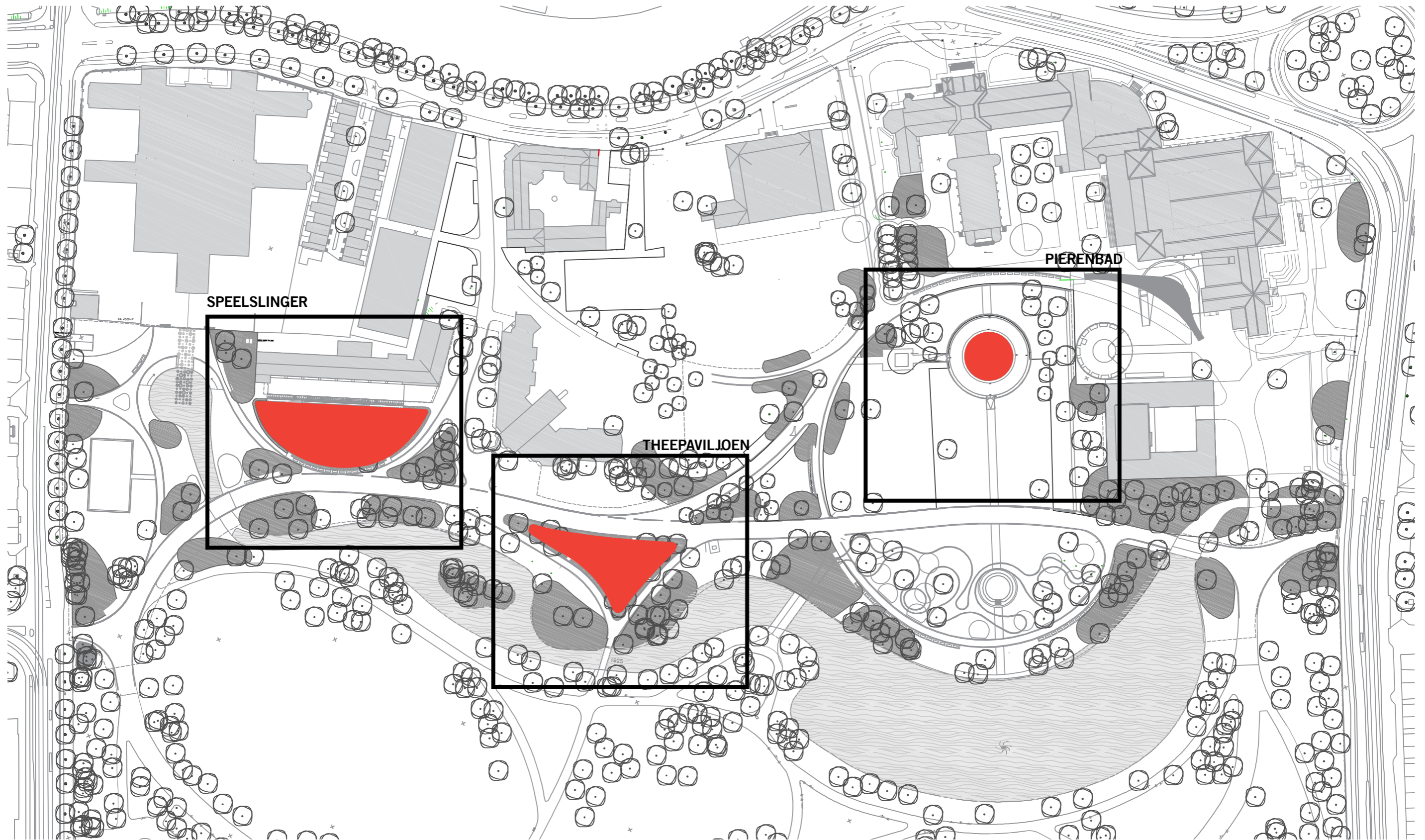
---

 CARVE

---

OOSTERPARK DO  
12-03-2012

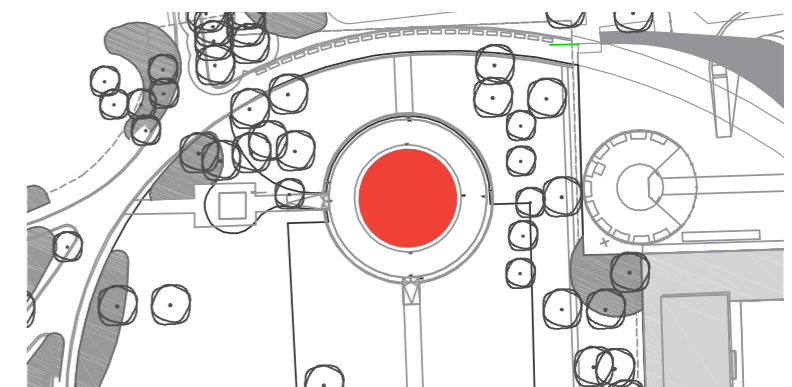
# OOSTERPARK AMSTERDAM



# OOSTERPARK AMSTERDAM

LOCATION: pierenbad

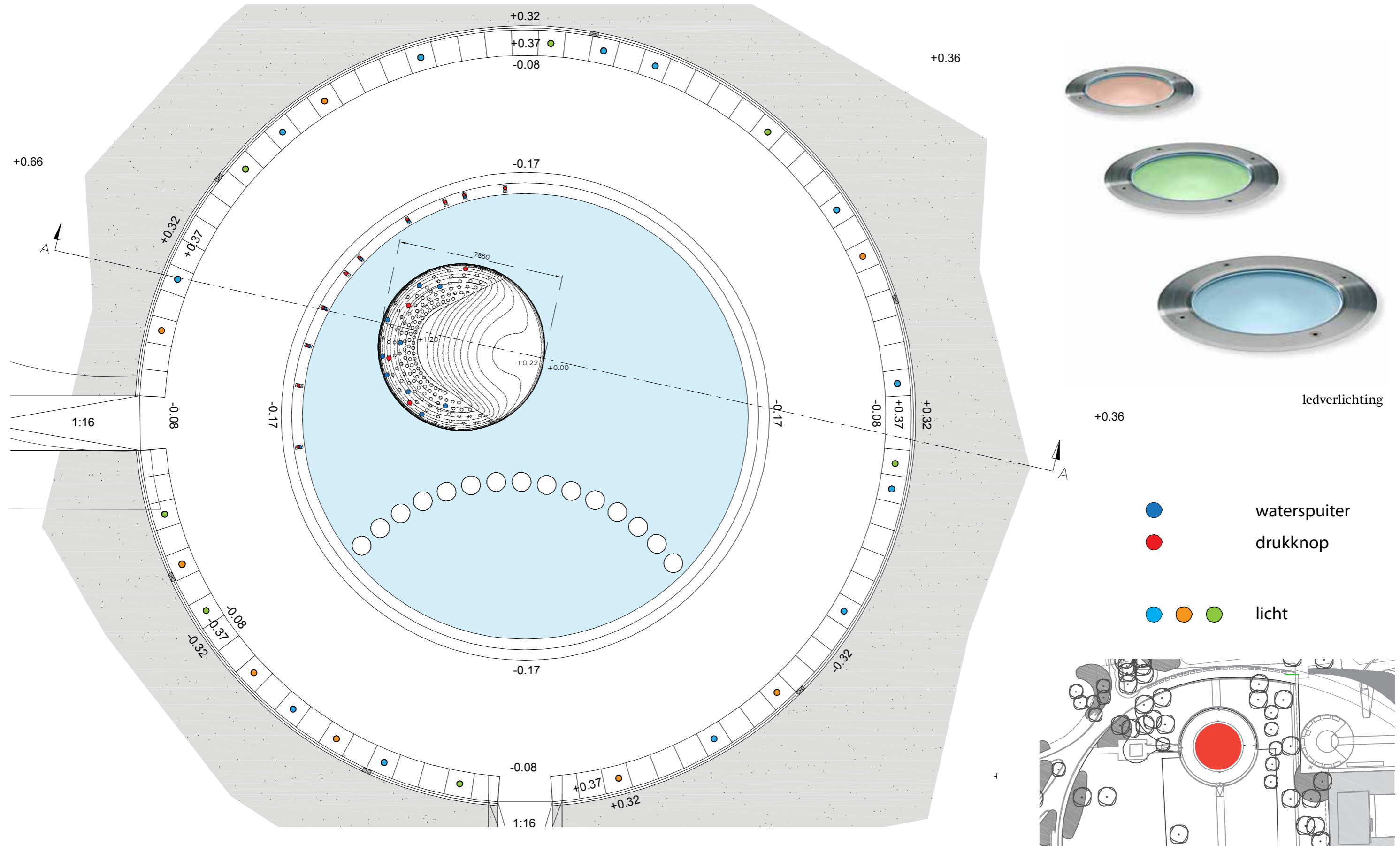
CARVE



# OOSTERPARK AMSTERDAM

LOCATION: pierenbad

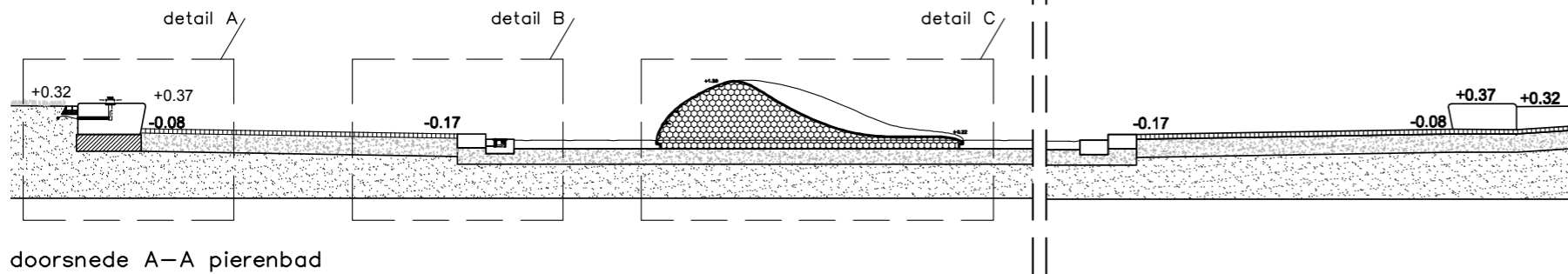
CARVE



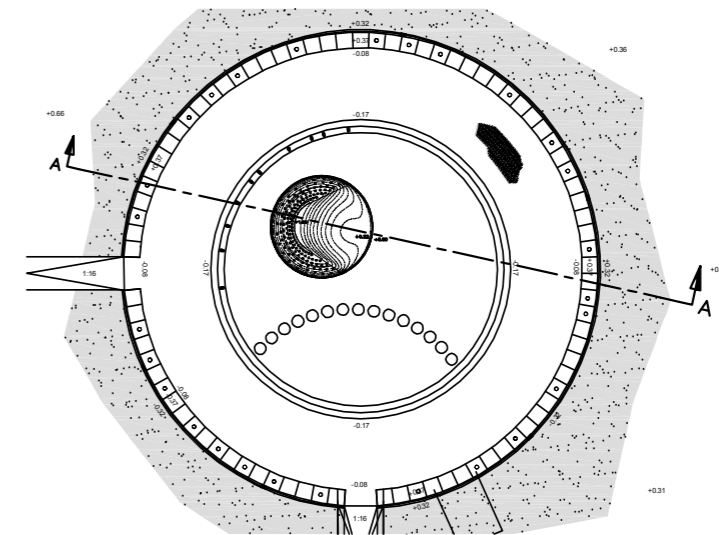
# OOSTERPARK AMSTERDAM

LOCATION: pierenbad

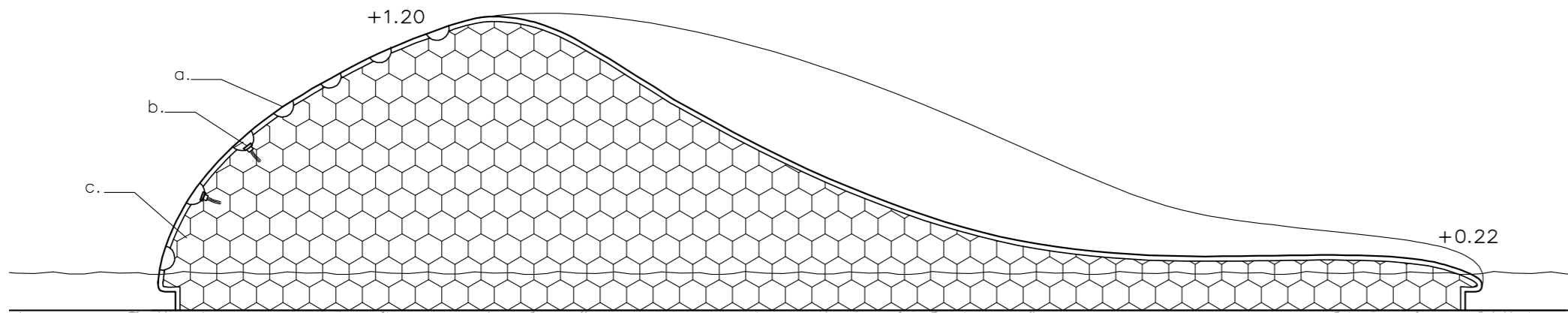
CARVE



doorsnede A-A pierenbad  
schaal 1:100

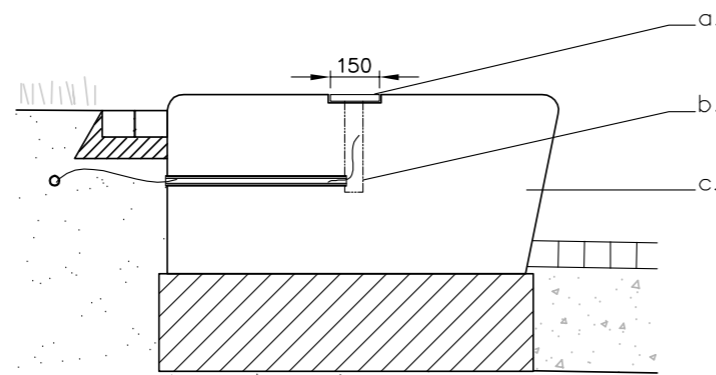


plattegrond pierenbad  
schaal 1:500



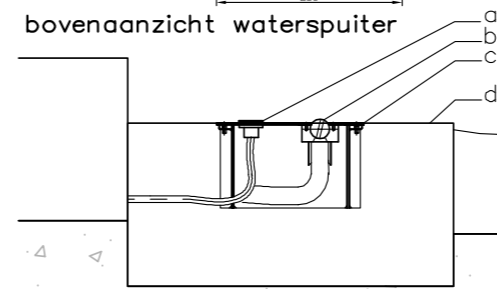
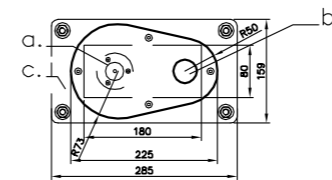
detail C – speelobject  
schaal 1:50

- a. klimgaten  $\varnothing$  100mm
- b. druk- en spuitknoppen
- c. speelobject, EPS kern met polyester schil (hand lay-up)



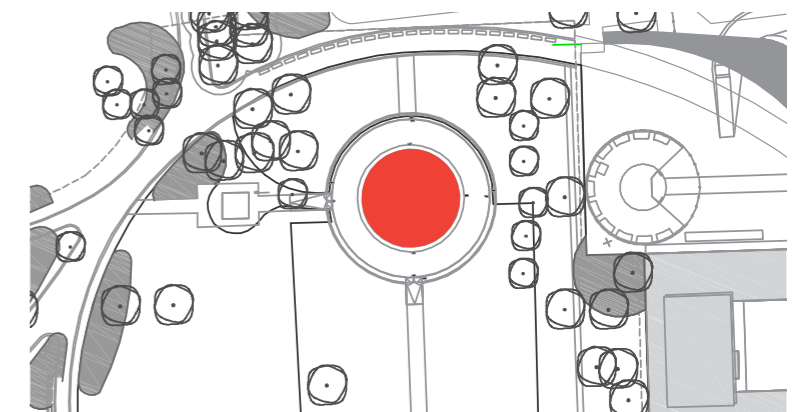
detail A – zitrand  
schaal 1:20

- a. licht armatuur
- b. buis tvb leiding aanvoer
- c. tegelmont



detail B – waterspuit  
schaal 1:10

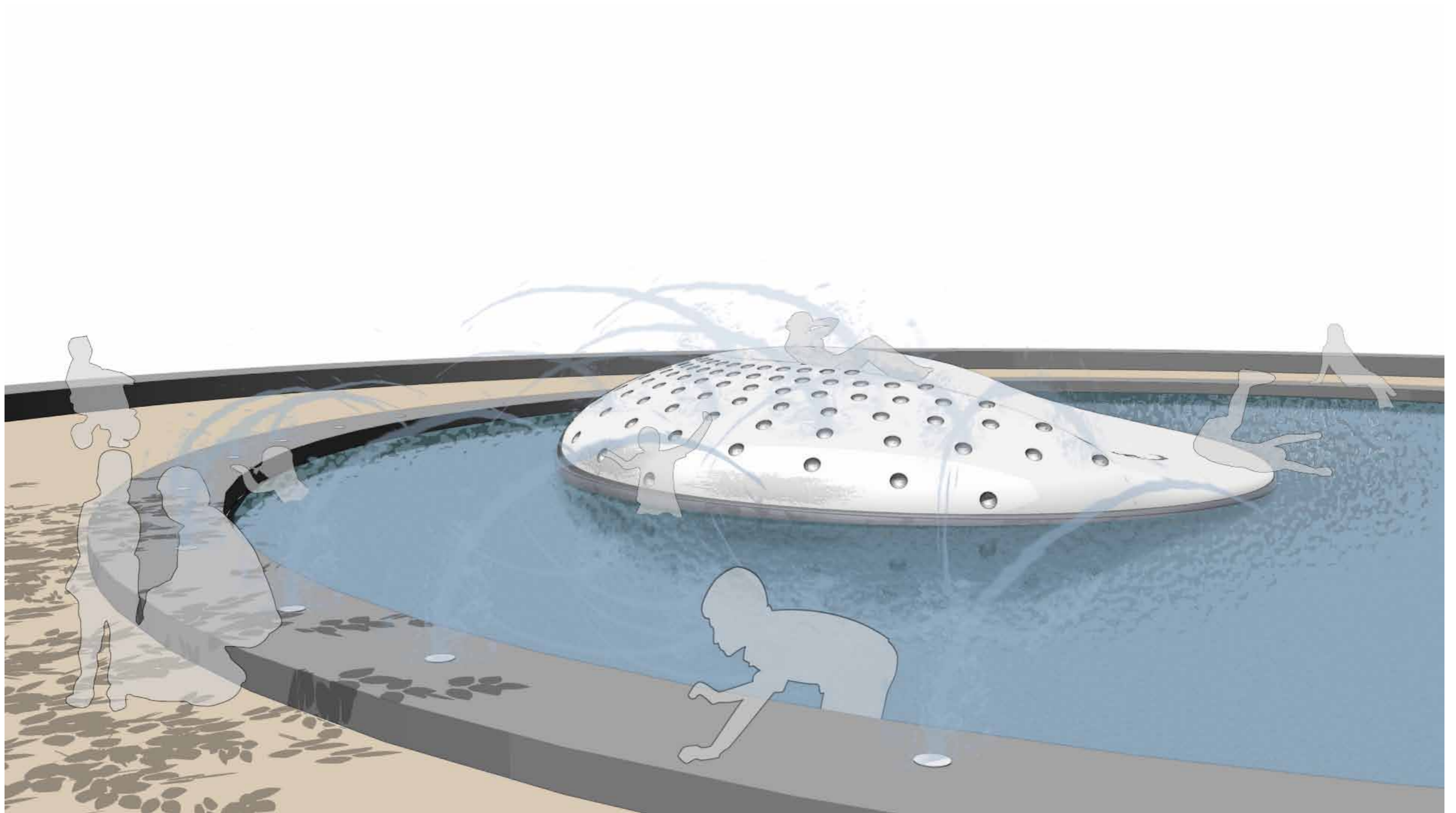
- a. druk knop
- b. waterspuit



# OOSTERPARK AMSTERDAM

LOCATION: pierenbad

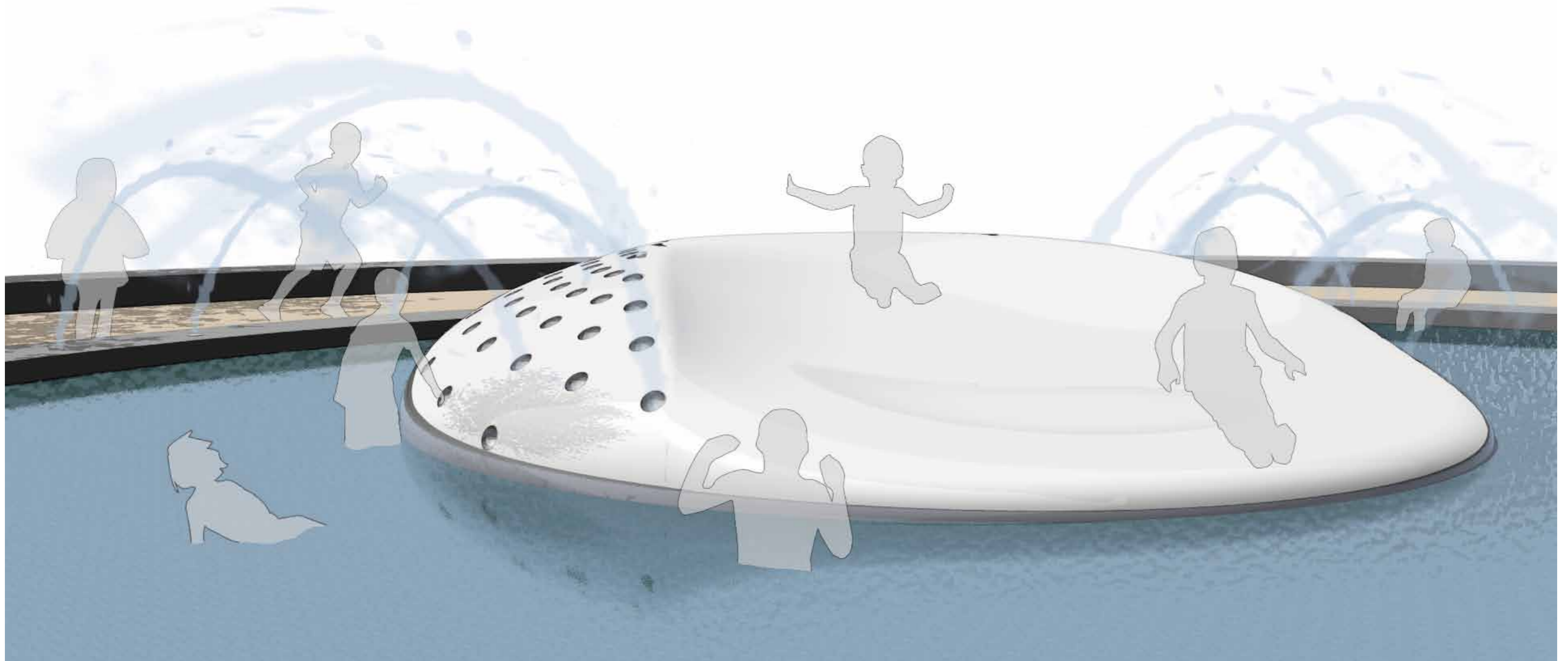
CARVE



# OOSTERPARK AMSTERDAM

LOCATION: pierenbad

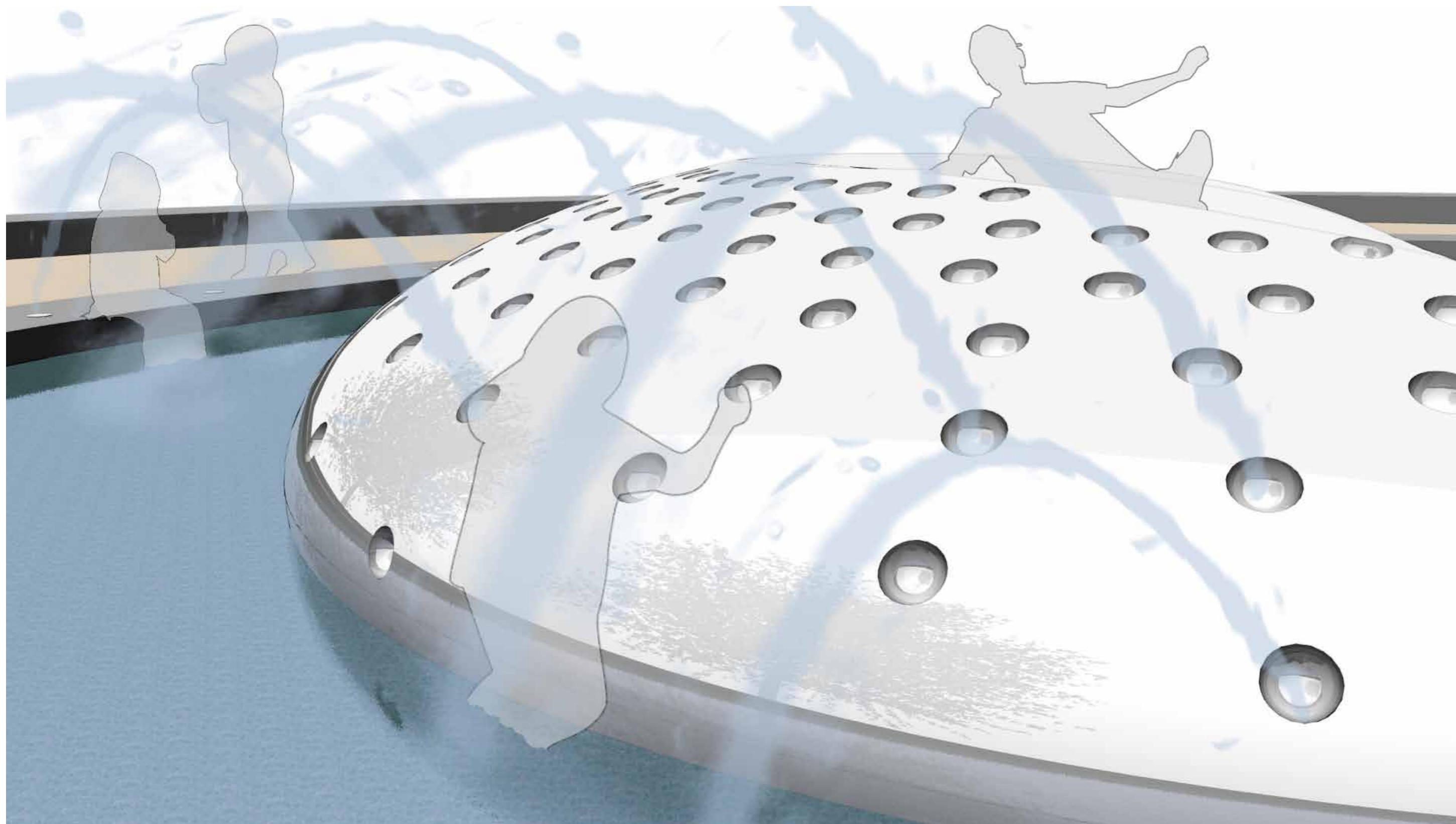
CARVE



# OOSTERPARK AMSTERDAM

LOCATION: pierenbad

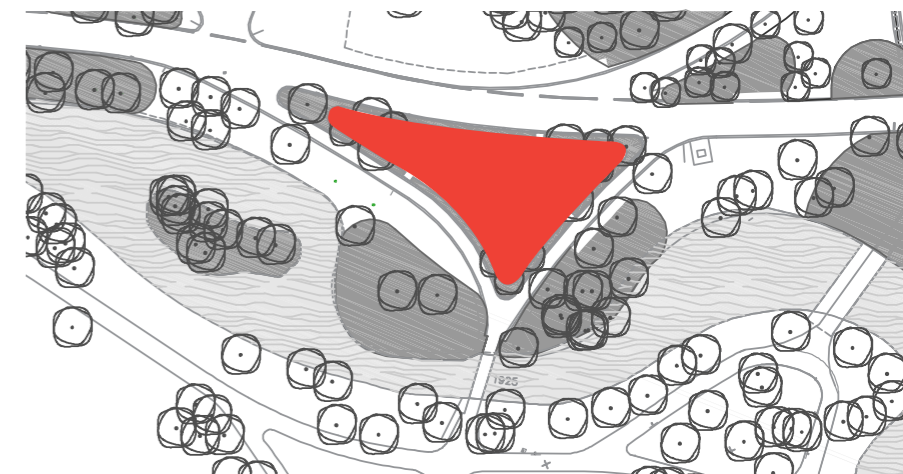
CARVE



# OOSTERPARK AMSTERDAM

LOCATION: theepaviljoen

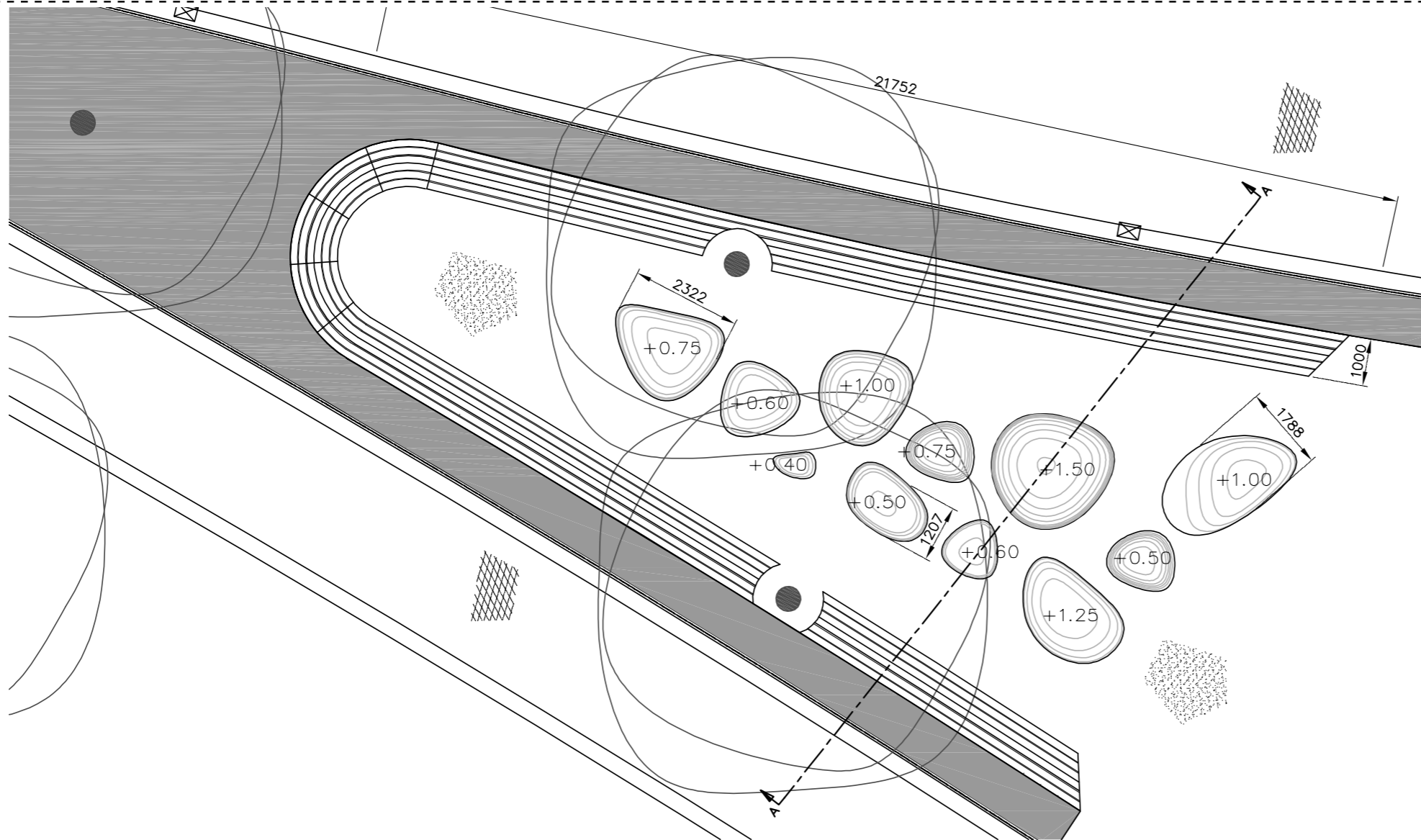
CARVE



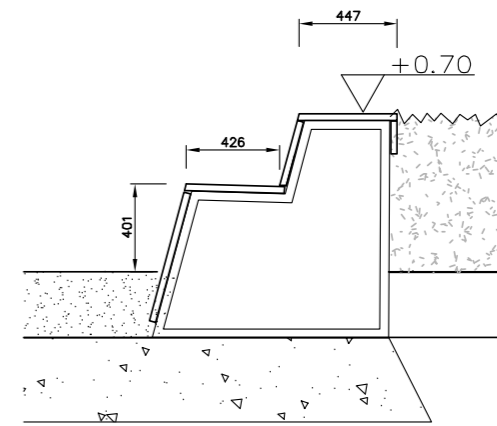
# OOSTERPARK AMSTERDAM

LOCATION: theepaviljoen

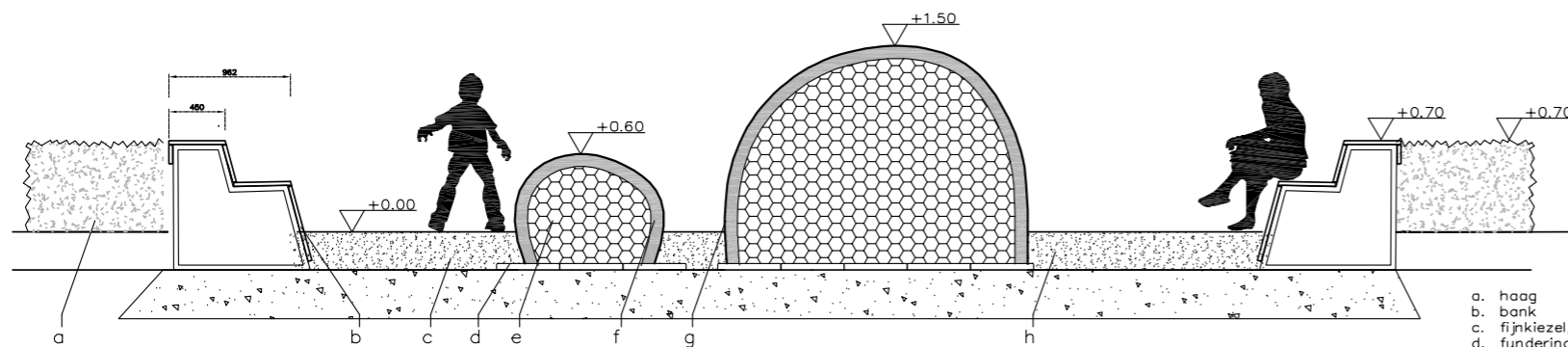
CARVE



plattegrond  
schaal 1:100

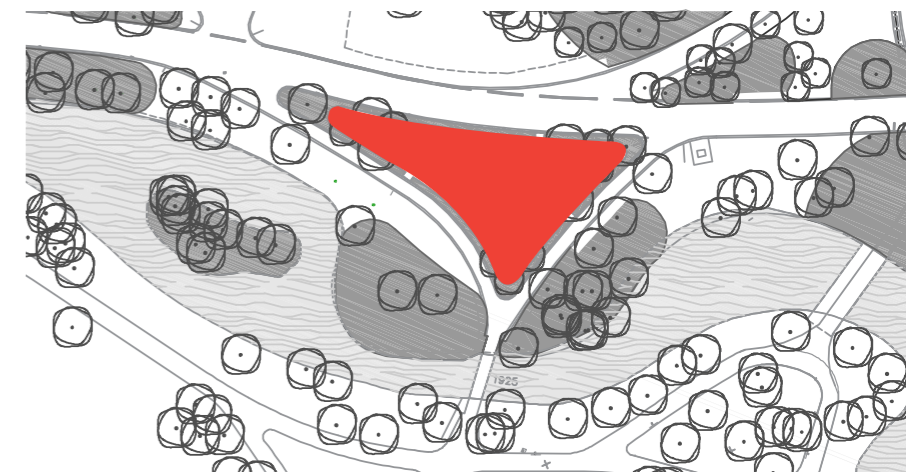


bank  
schaal 1:30  
houten balken D=30 mm  
stalen frame



- a. haag
- b. bank
- c. fijnkiezel, korrelgrote 2-4mm d=300mm
- d. fundering volume, tegels 50x50x5
- e. kern volume EPS
- f. buitenwand volume, beton 100mm dik (hand lay-up)
- g. bolvormig volume tot 1,5m hoog
- h. puingranulaat

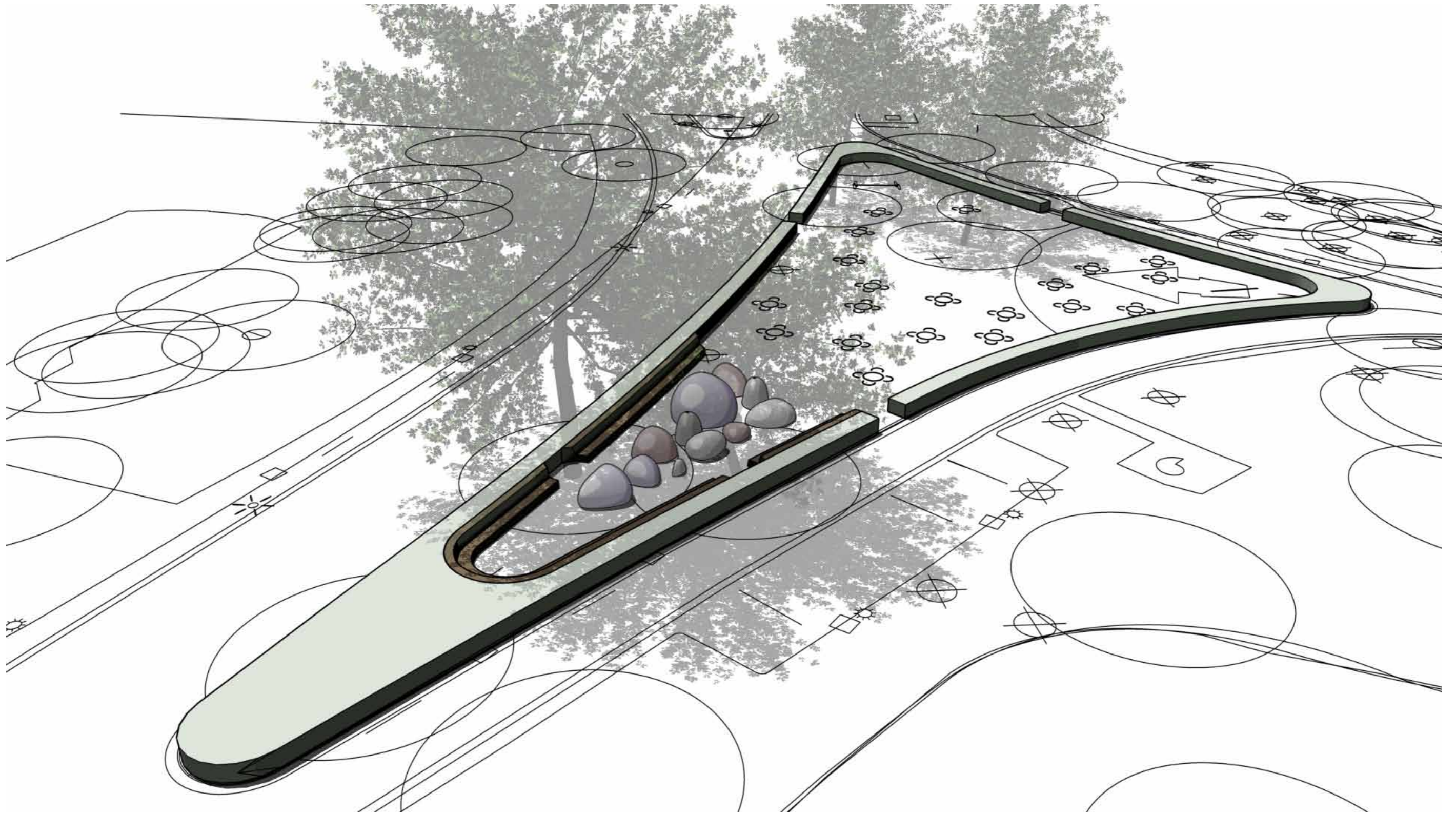
doorsnede A-A  
schaal 1:50



# OOSTERPARK AMSTERDAM

LOCATION: theepaviljoen

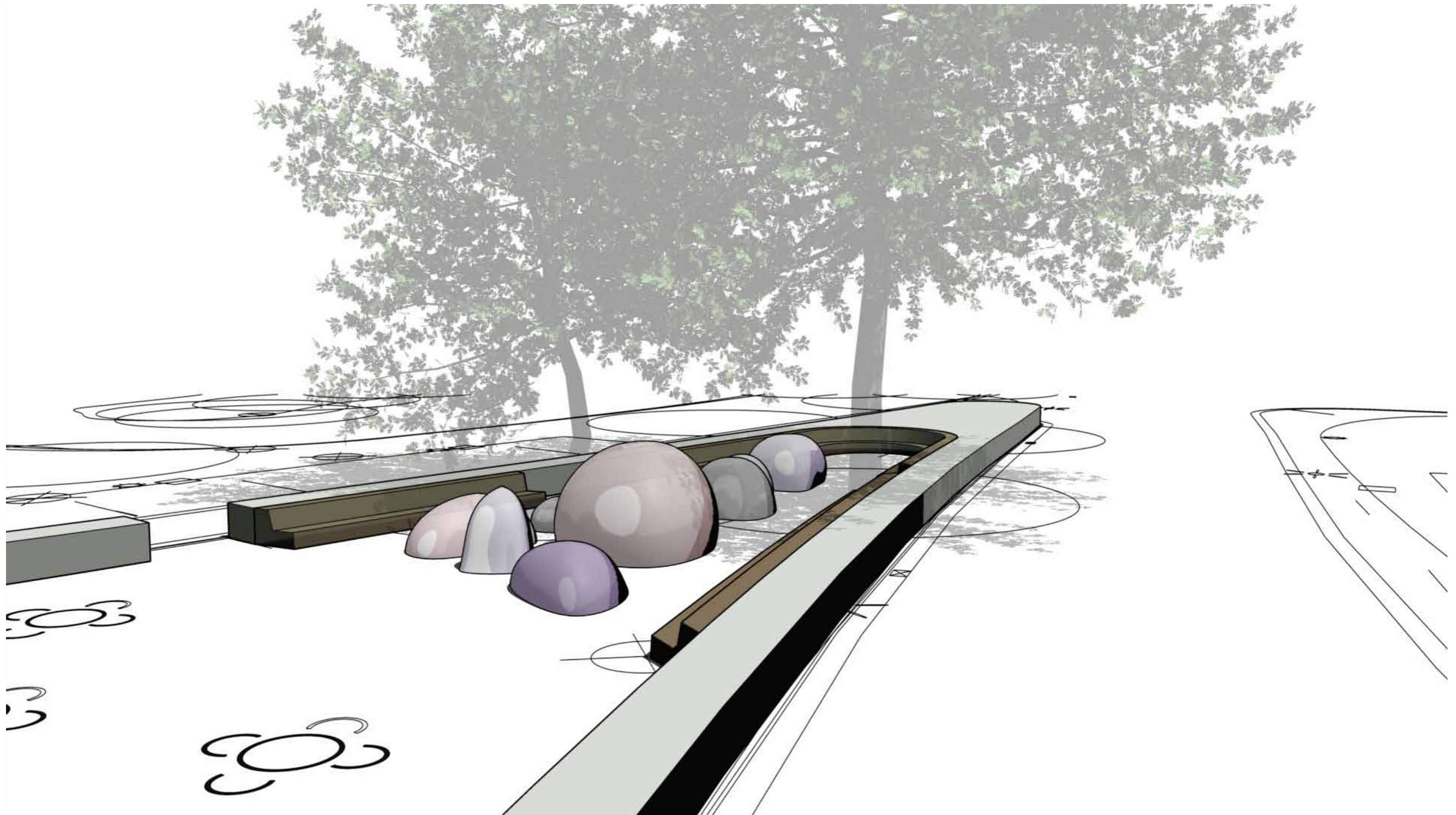
CARVE



# OOSTERPARK AMSTERDAM

LOCATION: theepaviljoen

CARVE



# OOSTERPARK AMSTERDAM

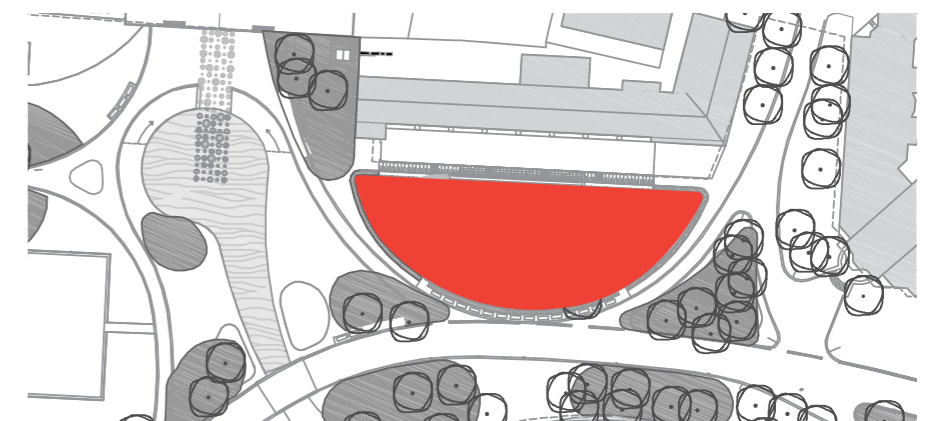
---



# OOSTERPARK AMSTERDAM

LOCATION: speelslinger

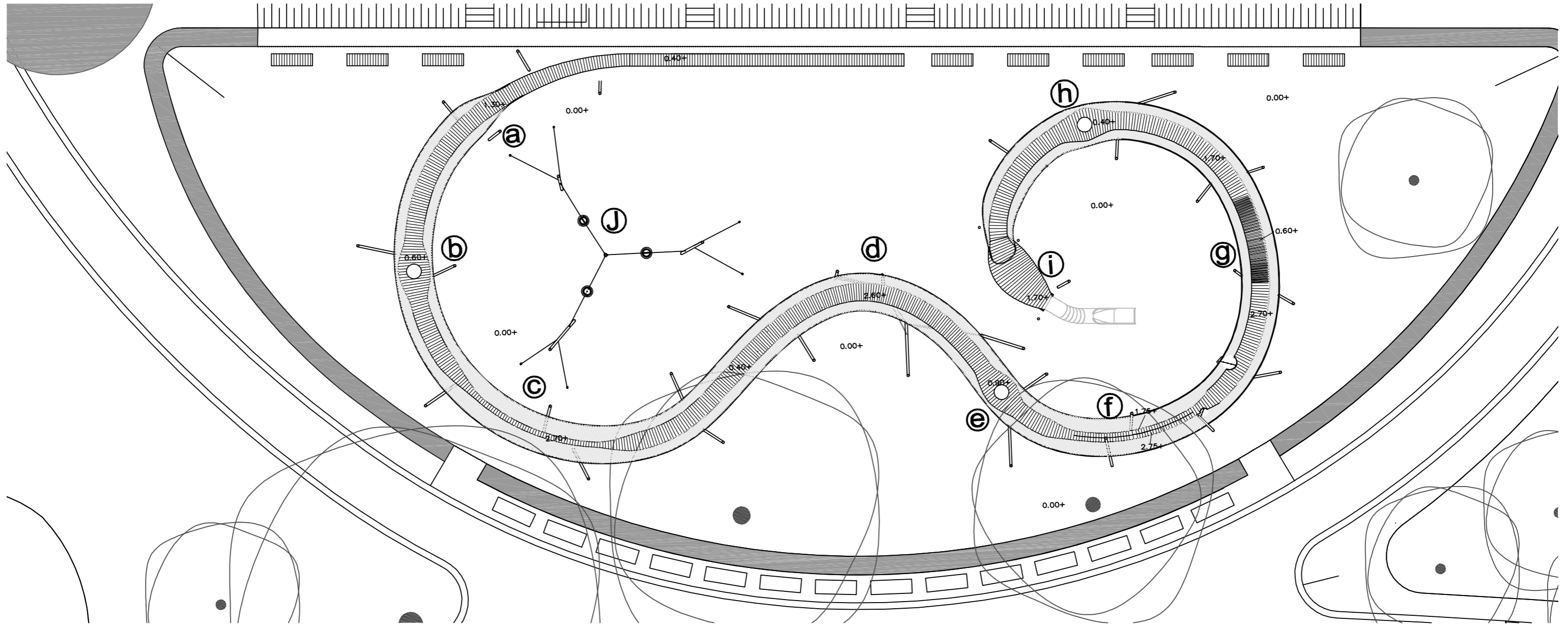
CARVE



# OOSTERPARK AMSTERDAM

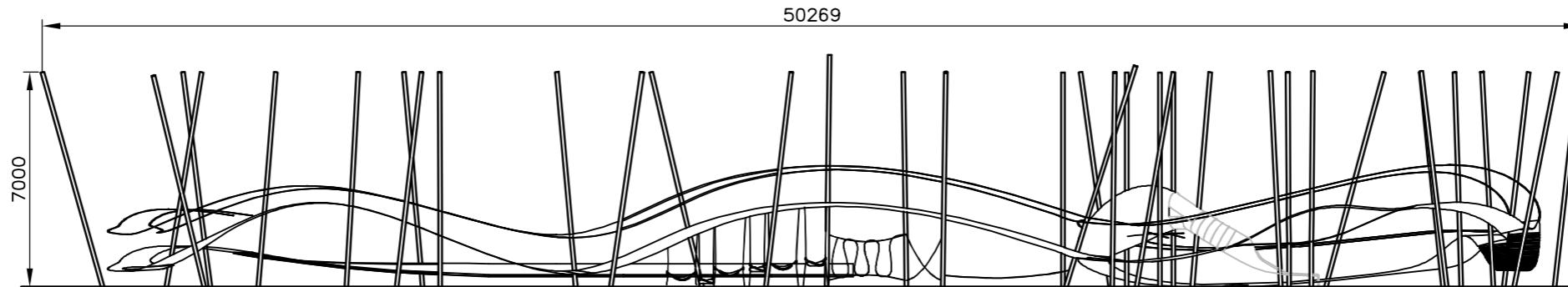
LOCATION: speelslinger

CARVE



plattegrond speelslinger  
(schaal 1:200)

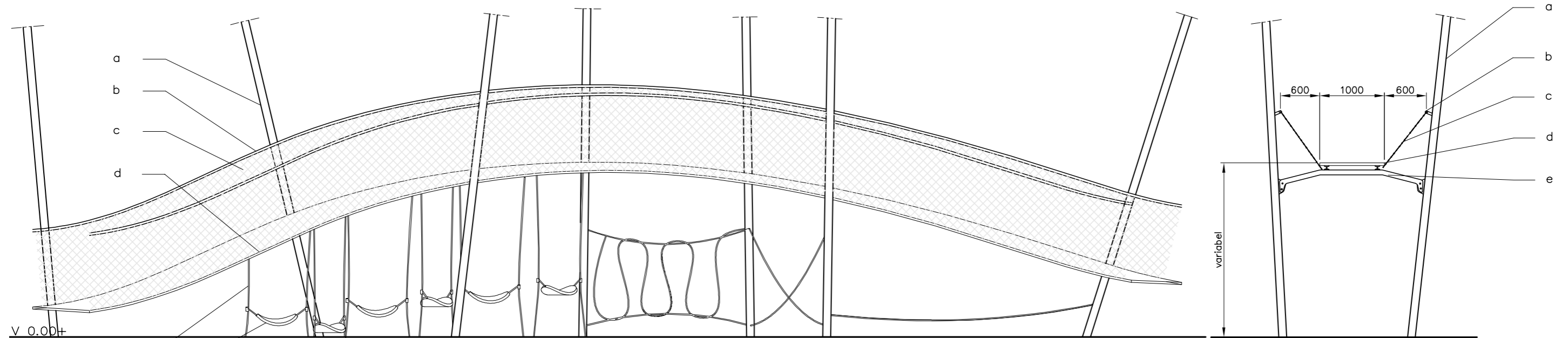
- a: overgang van bank naar slinger
- b: toegang met klim lussen
- c: balanceer brug
- d: touw jungle met hangmatjes
- e: toegang met glijstang
- f: golfpad met klimtouwen
- g: hangbrug
- h: toegang
- i: glijbaan monding
- j: koninginnen schommel



# OOSTERPARK AMSTERDAM

LOCATION: speelslinger

CARVE



zijaanzicht touwjungle

(schaal 1:50)

a: palen  $\varnothing 11,3 \times 4,5$

b: borstwering uit buis  $\varnothing 42,3 \times 3$

c: RVS webnet 50x50

d: loop pad uit planken 1000mmx150mmx28mm

e: polyferro speeltouwen  $\varnothing 16$

f: mini hangmatjes

principe detail pad ondersteuning

(schaal 1:50)

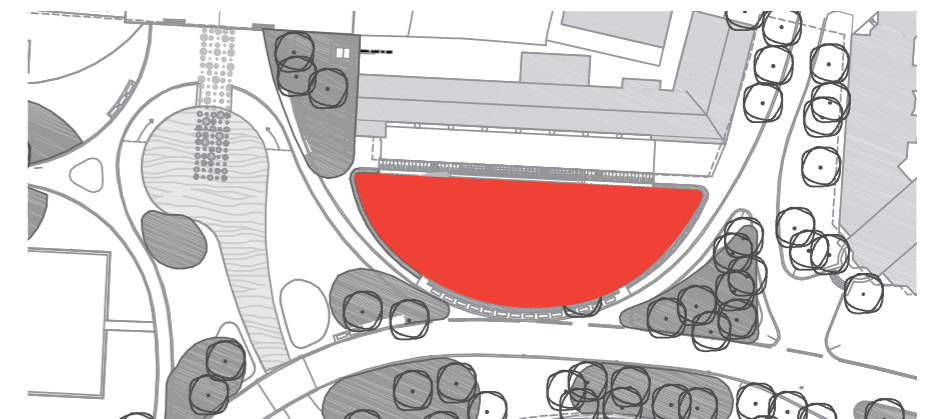
a: palen  $\varnothing 11,3 \times 4,5$

b: borstwering uit buis  $\varnothing 42,3 \times 3$

c: RVS webnet 50x50

d: loop pad uit planken 1000mmx150mmx28mm

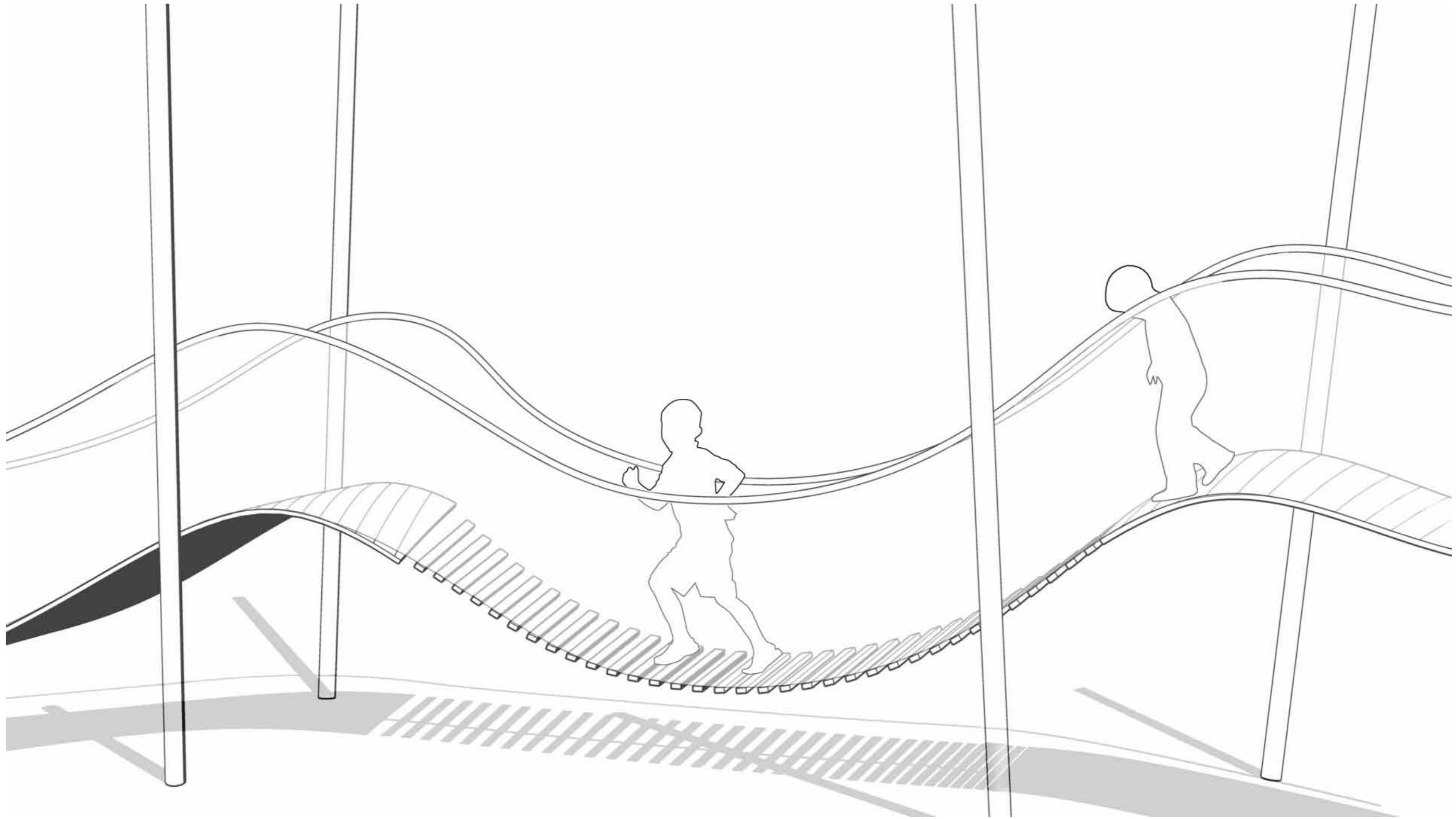
e: steun constructie uit laser gesnede strip



# OOSTERPARK AMSTERDAM

LOCATION: speelslinger

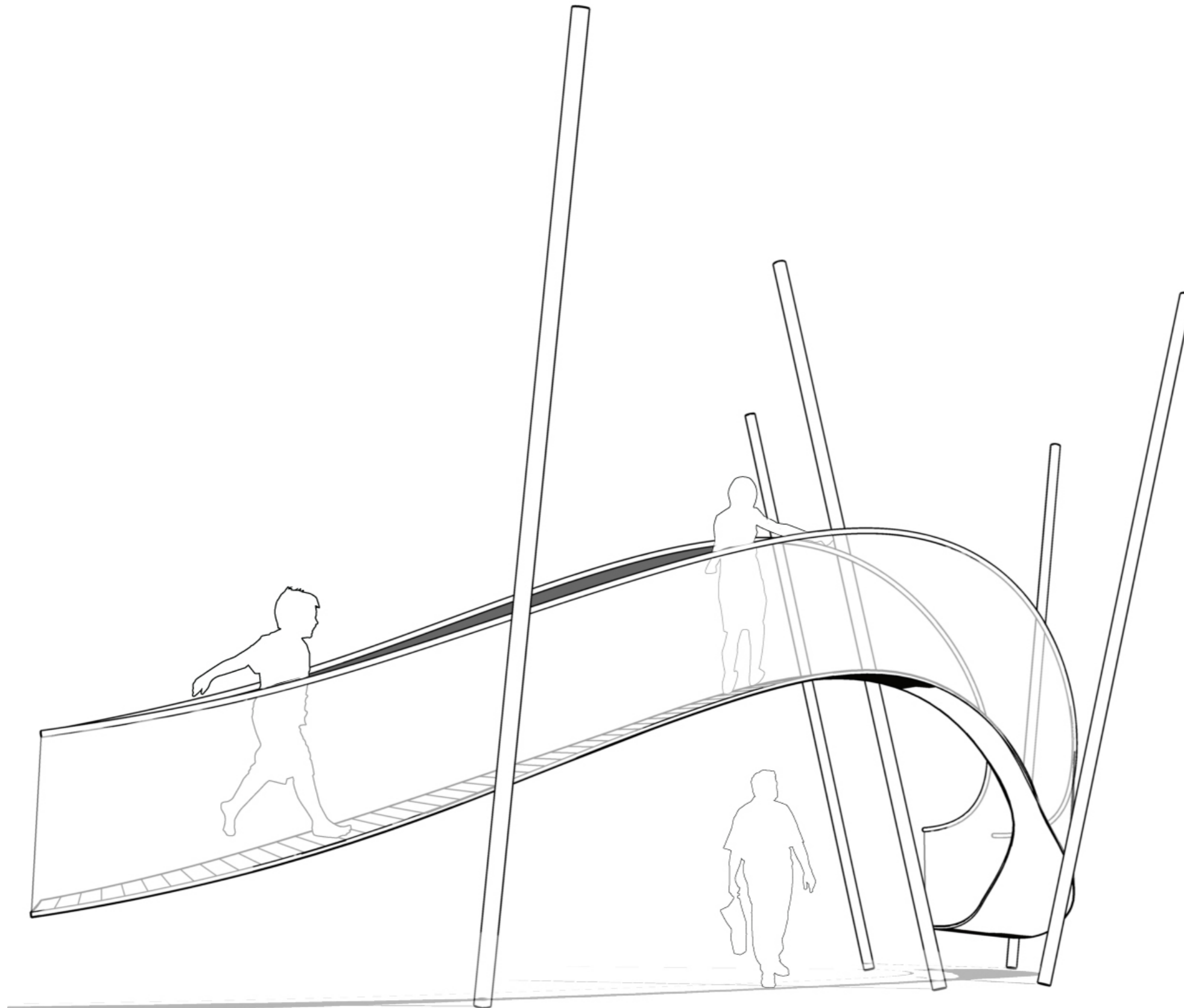
CARVE



# OOSTERPARK AMSTERDAM

LOCATION: speelslinger

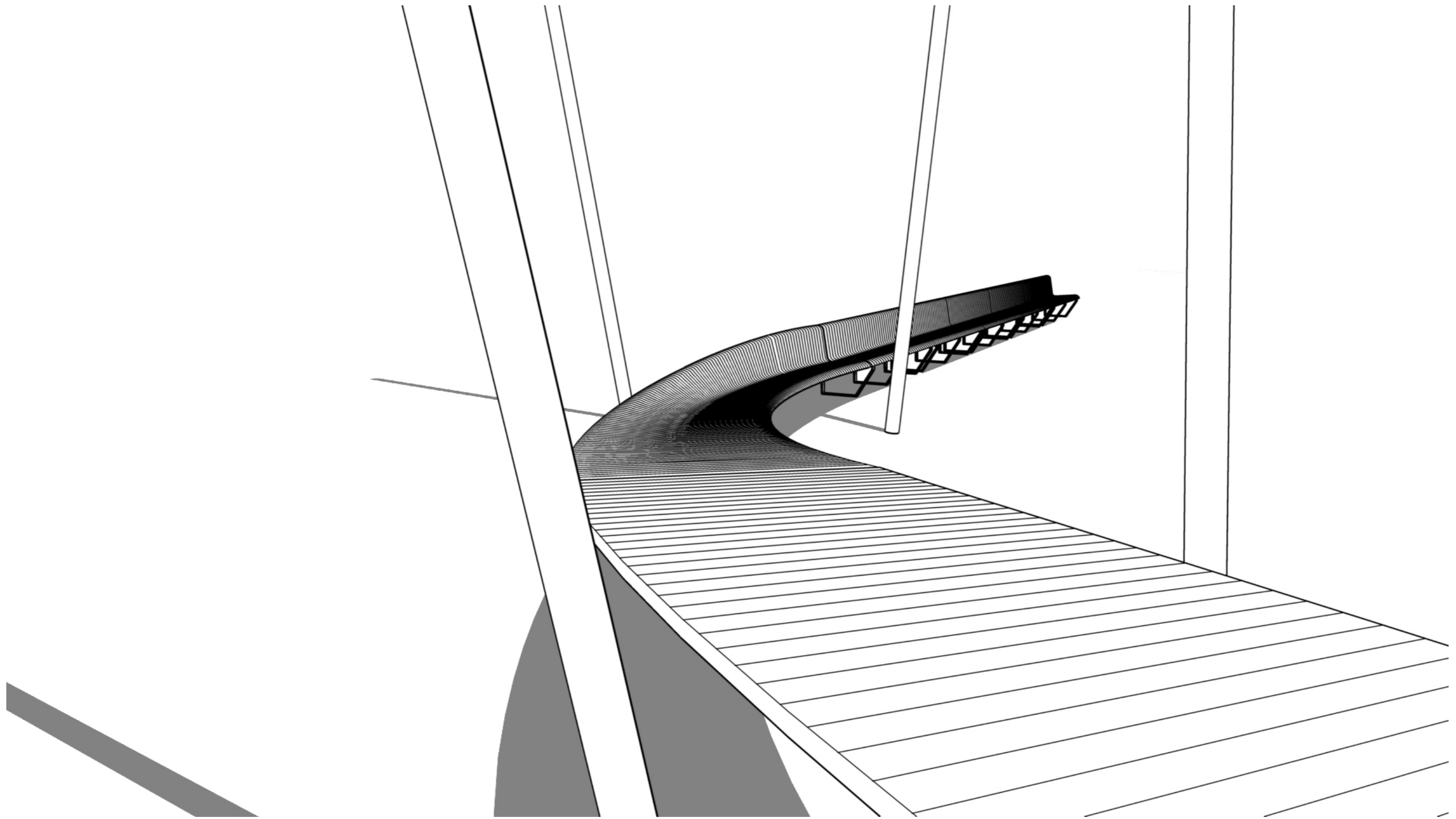
CARVE



# OOSTERPARK AMSTERDAM

LOCATION: speelslinger

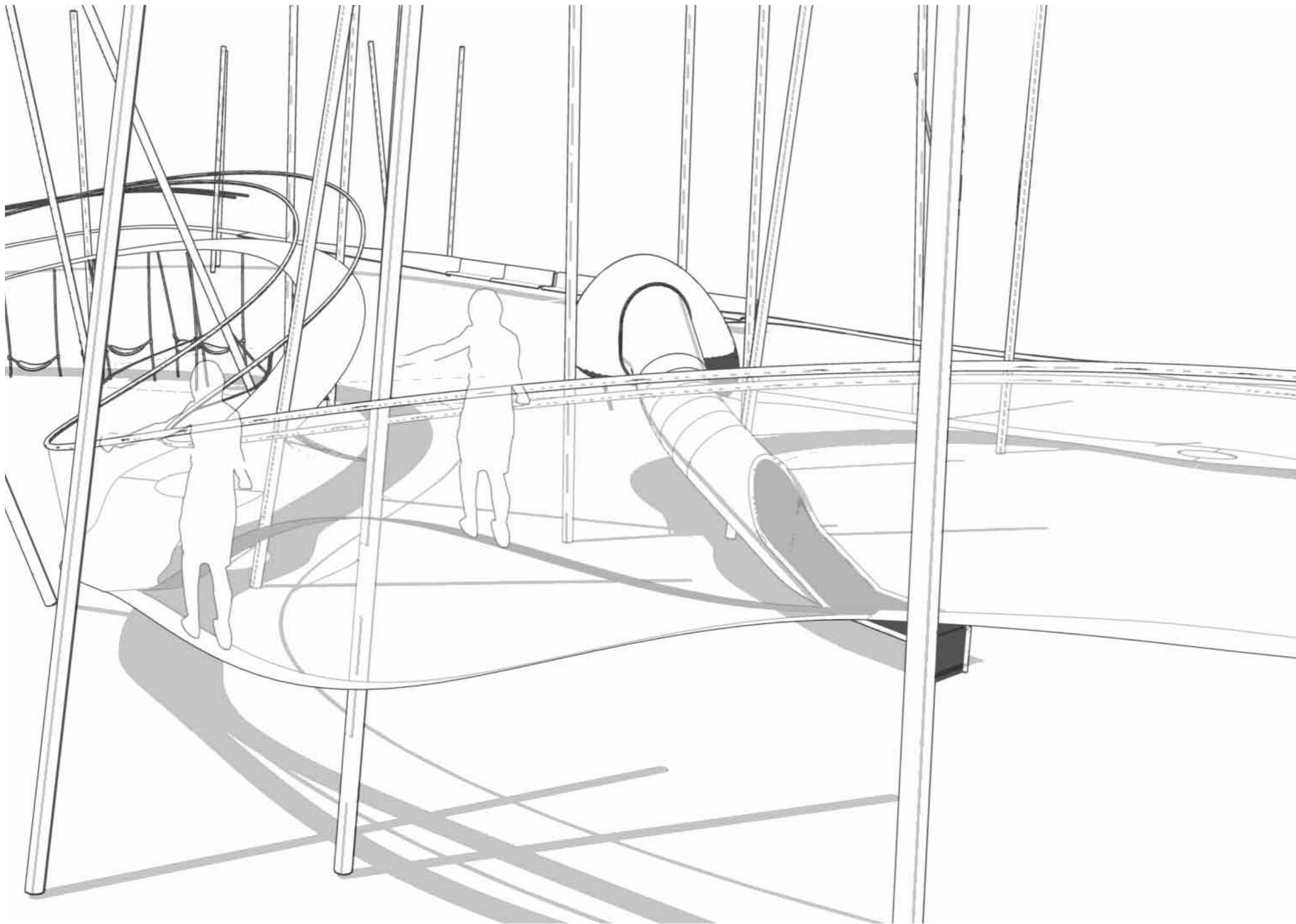
 CARVE



# OOSTERPARK AMSTERDAM

LOCATION: speelslinger

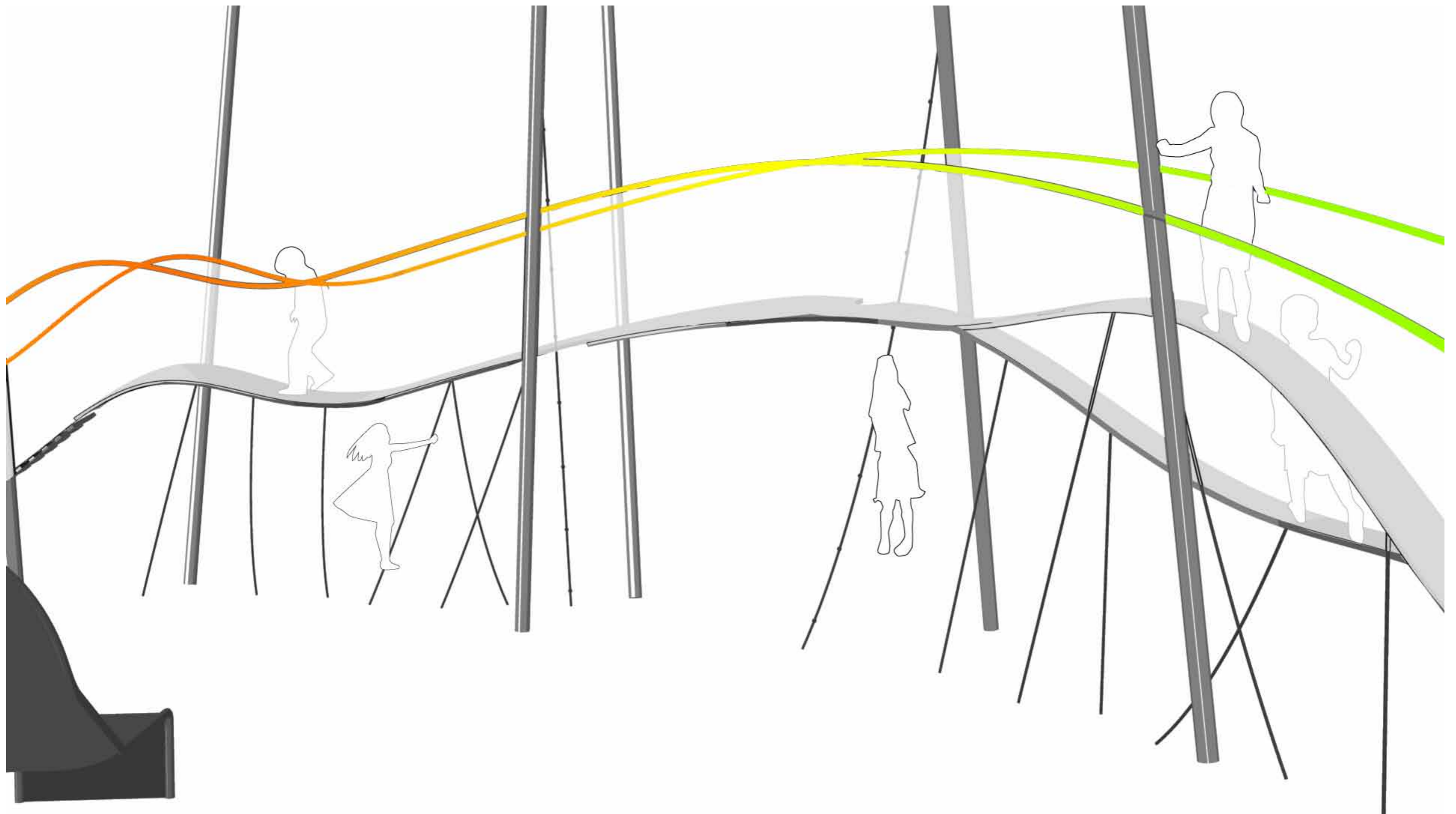
 CARVE



# OOSTERPARK AMSTERDAM

LOCATION: speelslinger

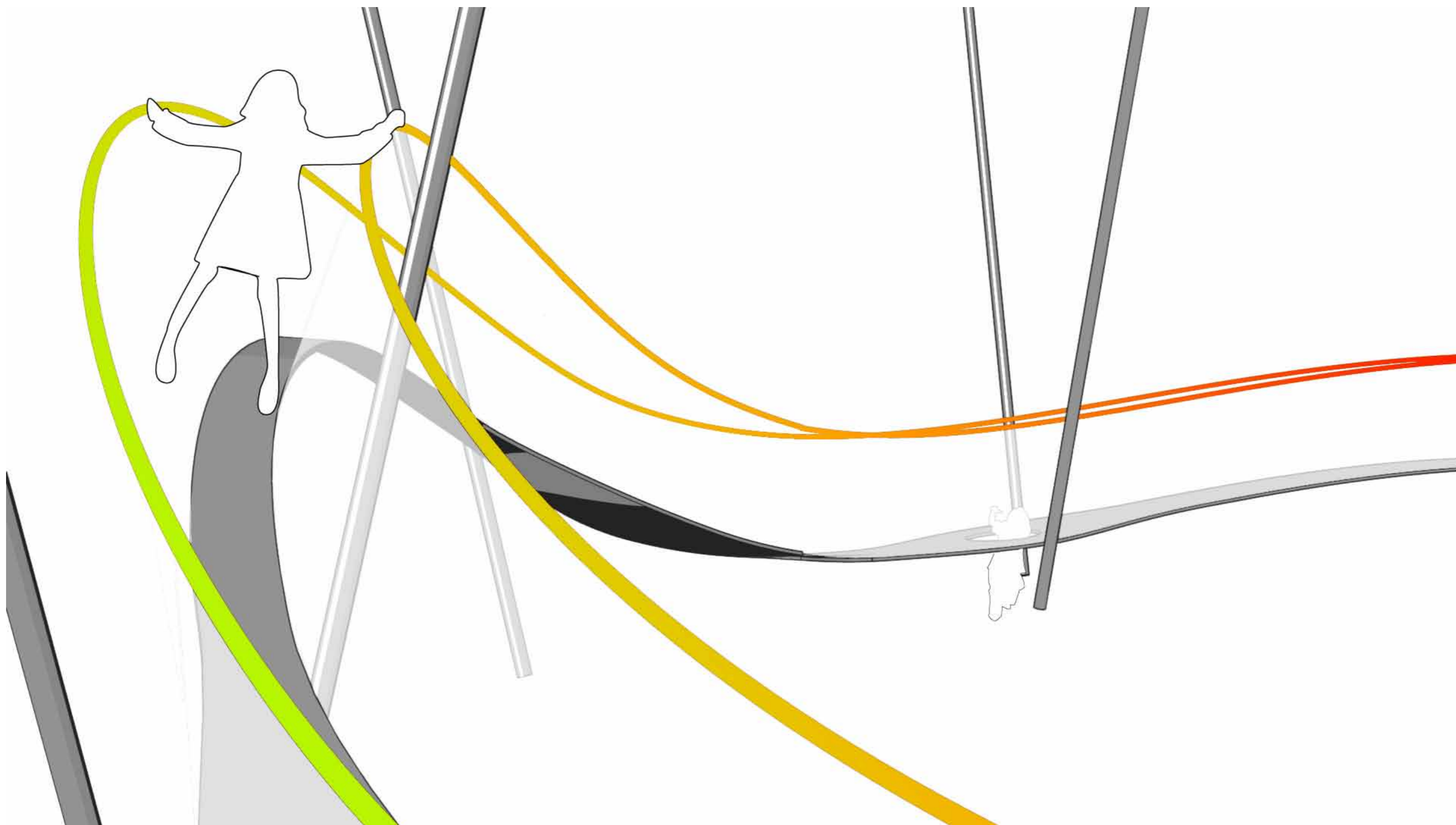
CARVE



# OOSTERPARK AMSTERDAM

LOCATION: speelslinger

CARVE



# OOSTERPARK AMSTERDAM

## MATERIALEN



### PIERENBAD

1. VERLICHTING WATERDICHTHE RVS BEHUIZING VOORZIEN VAN RGB LEDS, BEVESTIGINGSMIDDELEN RVS A4 ANTI DIEFSTAL
2. NOZLE CONSTRUCTIES TBV WATERSPEL, BEHUIZING RVS 316, GEGLASPARELSTRAALD, CONSTRUCTIE UITNEEMBAAR VOOR ONDERHOUD IN WINTER PERIODE, BEVESTIGINGSMIDDELEN RVS A4 ANTI DIEFSTAL
3. SPEELOBJECT CNC GEFREESDE EPS KERN BEKLEED MET HAND LAY-UP GLASVEZEL VERSTERKDE POLYESTER, AFWERKING UV BESTENDIGE HIGH GLOSS GEL COATING. SPARINGEN TEN BEHOEVE VAN TOEGANG NAAR GLIJBAAN VOORZIEN VAN TRANSPARANTE ANTI SLIP COATING



1.



2.



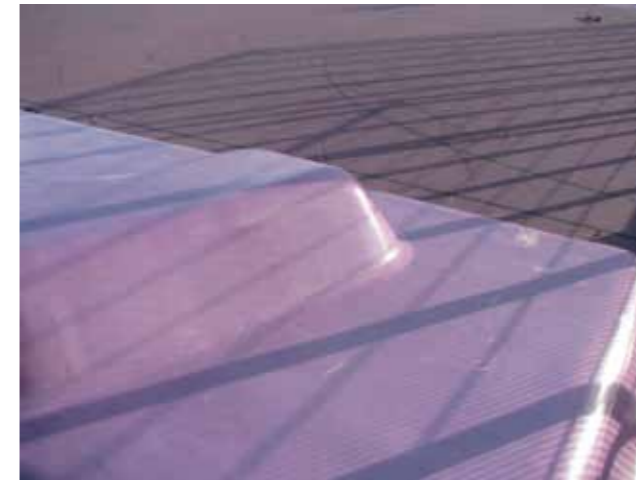
3.

### THEEPAVILJOEN

1. SPEELKEIEN CNC GEFREESDE EPS KERN BEKLEED MET HAND LAY-UP GLASVEZEL VERSTERKDE POLYESTER, AFWERKING UV BESTENDIGE HIGH GLOSS GEL COATING. ALTERNATIEF BEKLEDING SPUITBETON 100 MM AFGEWERKT MET HIGH GLOSS POLYURETHAAN COATING
2. BANKEN: FSC GECERTIFICEERD HARDHOUT DUURZAAMHEIDSKLASSE 1, AFWERKING IN OVEREENSTEMMING MET OVERIG PARK MEUBILAIR



1.



2.

### SPEELSLINGER

1. HOOFDDRAAG CONSTRUCTIE STAAL ST235 TERMISCH VERZINKT EN VOORZIEN VAN EEN DOUBBELLAAGSE POEDER COATING KLEUR GRIS SABLÉ 900
2. PLANKIER FSC GECERTIFICEERD HARDHOUT DUURZAAMHEIDSKLASSE 1, AFWERKING IN OVEREENSTEMMING MET OVERIG PARK MEUBILAIR, ALTERNATIEF GEACETYLEERD HOUT DUURZAAMHEIDSKLASSE 1, ALTERNATIEF 2 BAMBOE TERMISCH VEREDEL
3. DOORVALBEVEILIGING RVS WEBNET 50X50X2,
4. BEVESTIGINGSMIDDELEN RVS A2 ANTI DIEFSTAL
5. GLIJBAAN RVS 304 GEGLASPARELSTRAALD
6. POLYFERRO TOUWEN DIAMETER TENMINSTE 22 MM
7. HANGMATTEN GEWAPEND GEVULCANISEERD RUBBER



1. 2.



3.



6. 7.

# OOSTERPARK AMSTERDAM

---

COLOFON

---

 **CARVE**

**CARVE ONTWERP- EN INGENIEURSBUREAU**

Kortenaerplein 34  
1057 NE Amsterdam

t| 020 427 5711  
f| 020 427 5712  
e| info@carve.nl

[www.carve.nl](http://www.carve.nl)