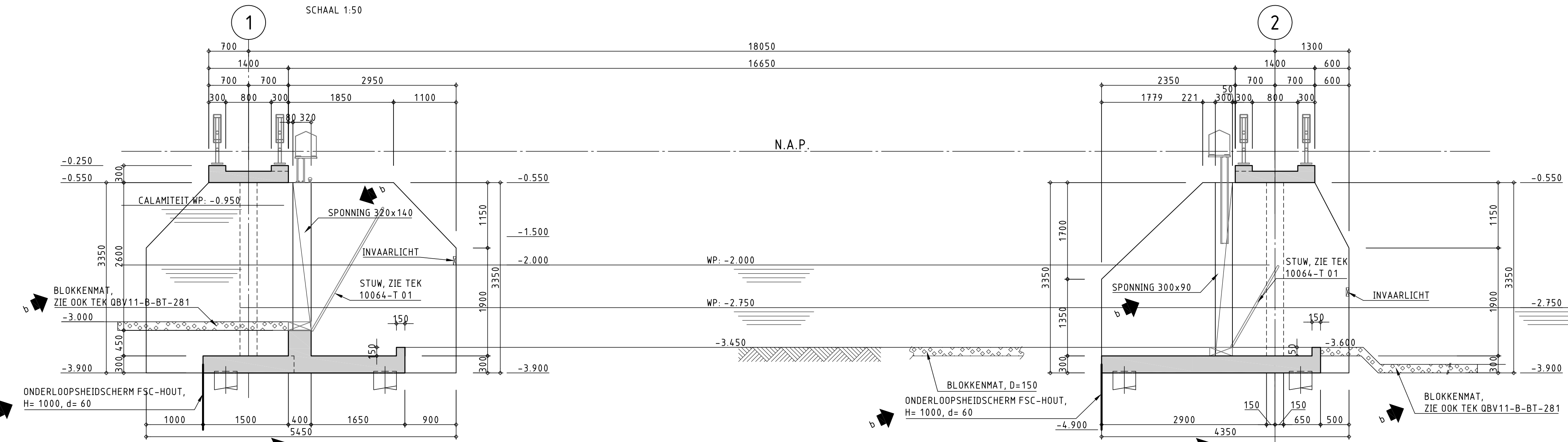


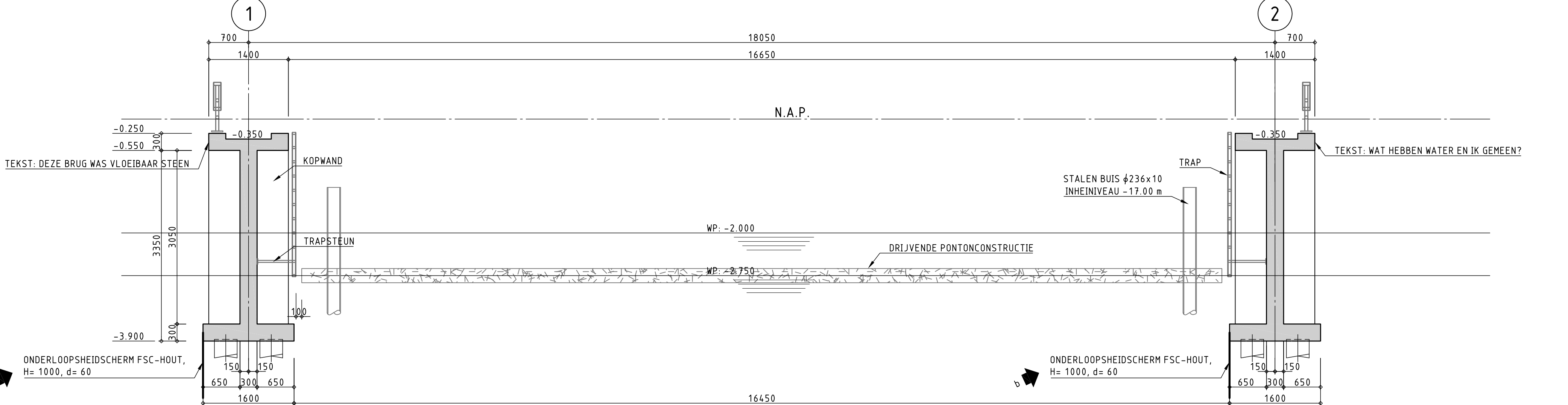
BOVENAANZICHT

SCHAAL 1:50



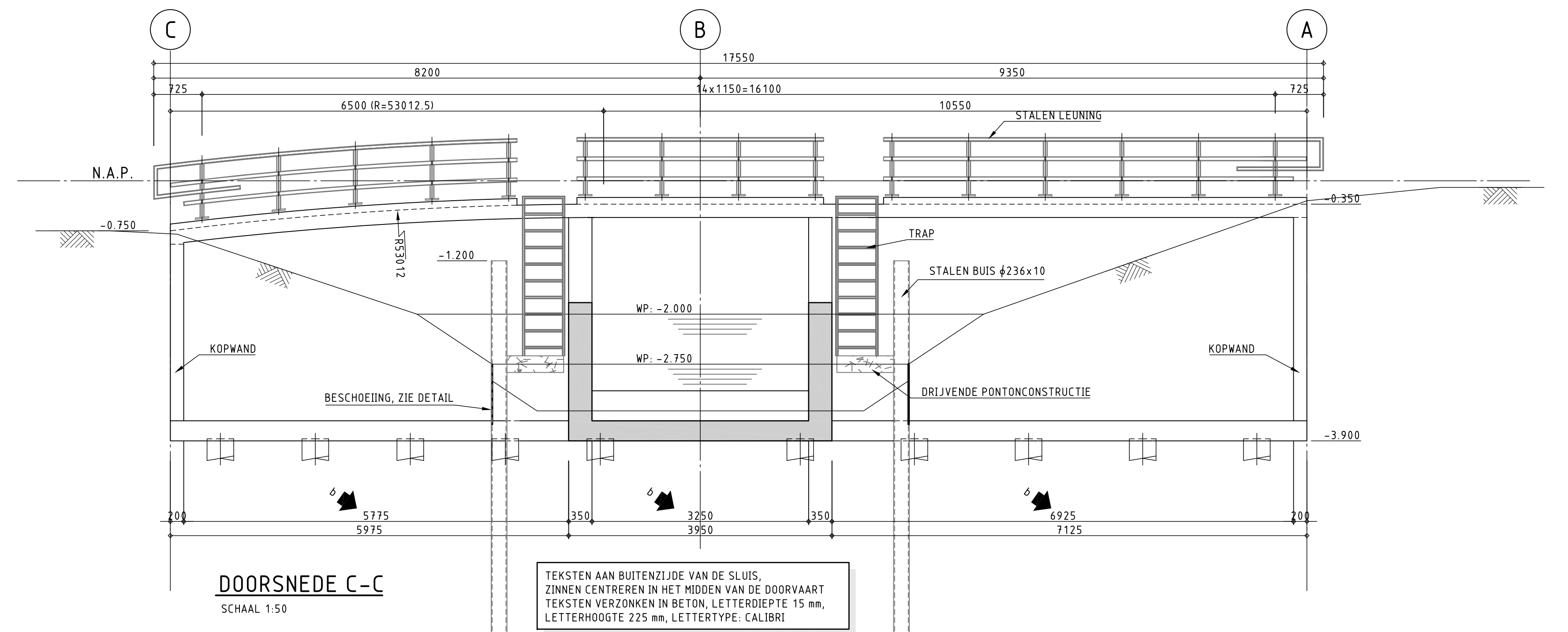
DOORSNEDE A-A

SCHAAL 1:50



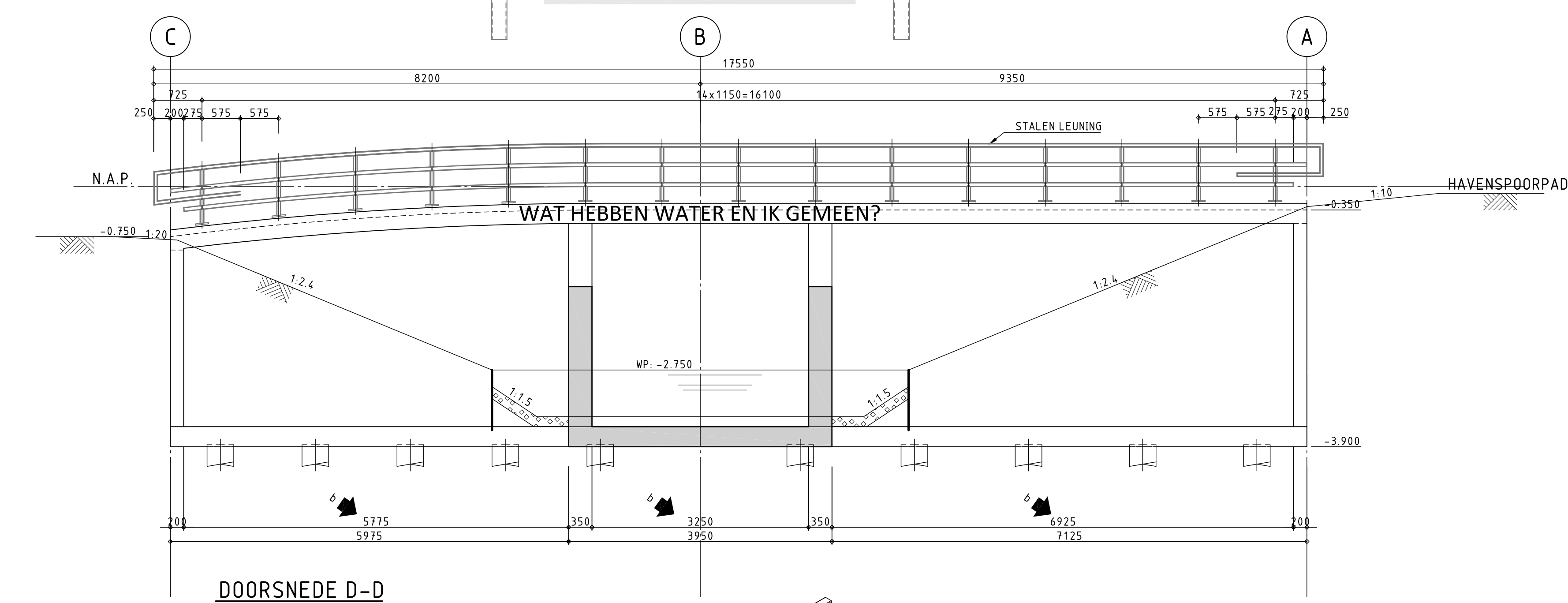
DOORSNEDE B-B

SCHAAL 1:50



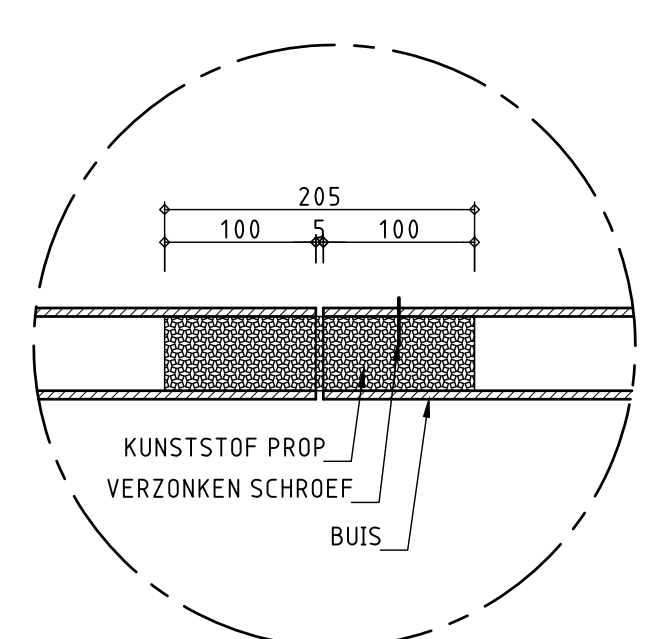
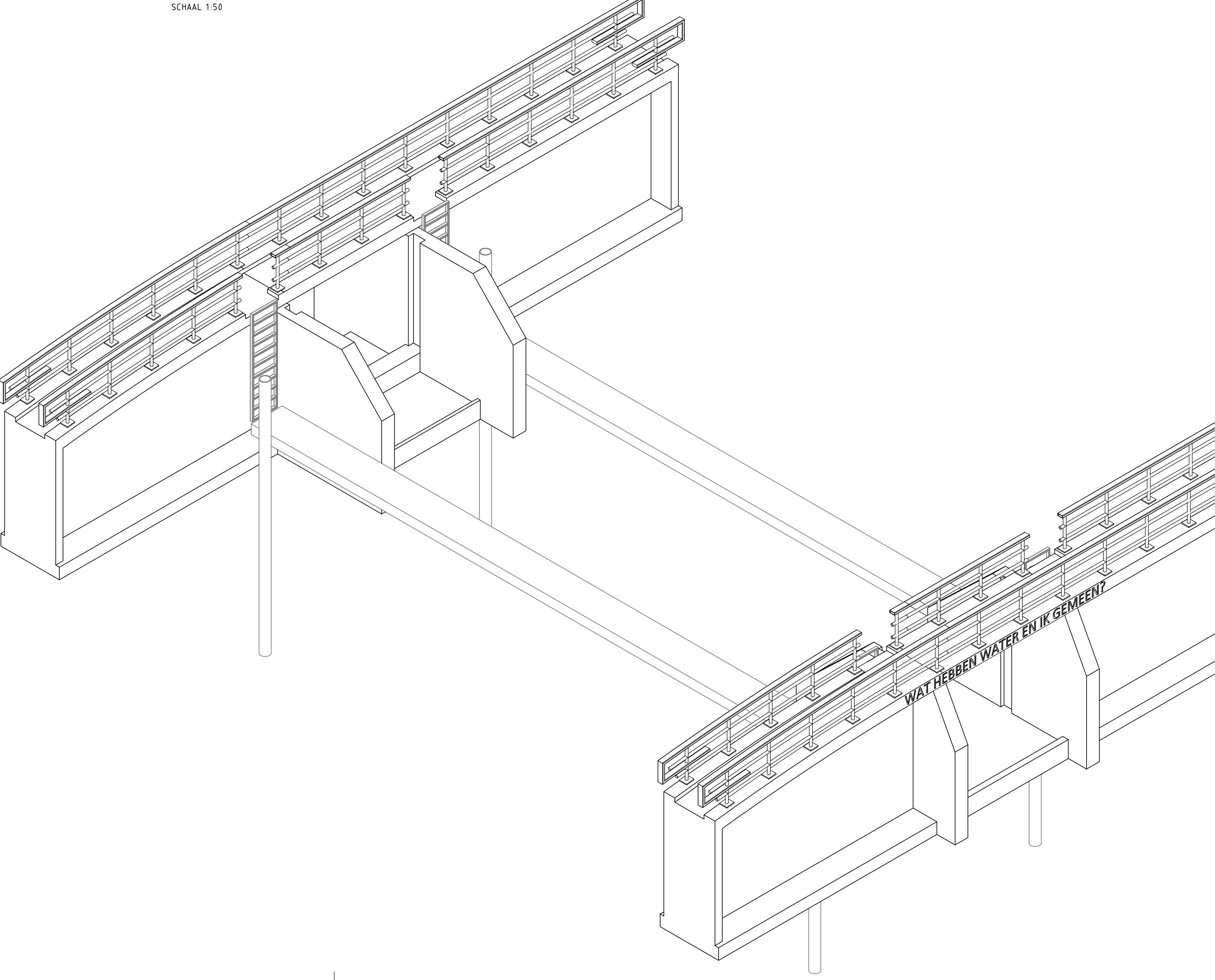
DOORSNEDE C-C

SCHAAL 1:50



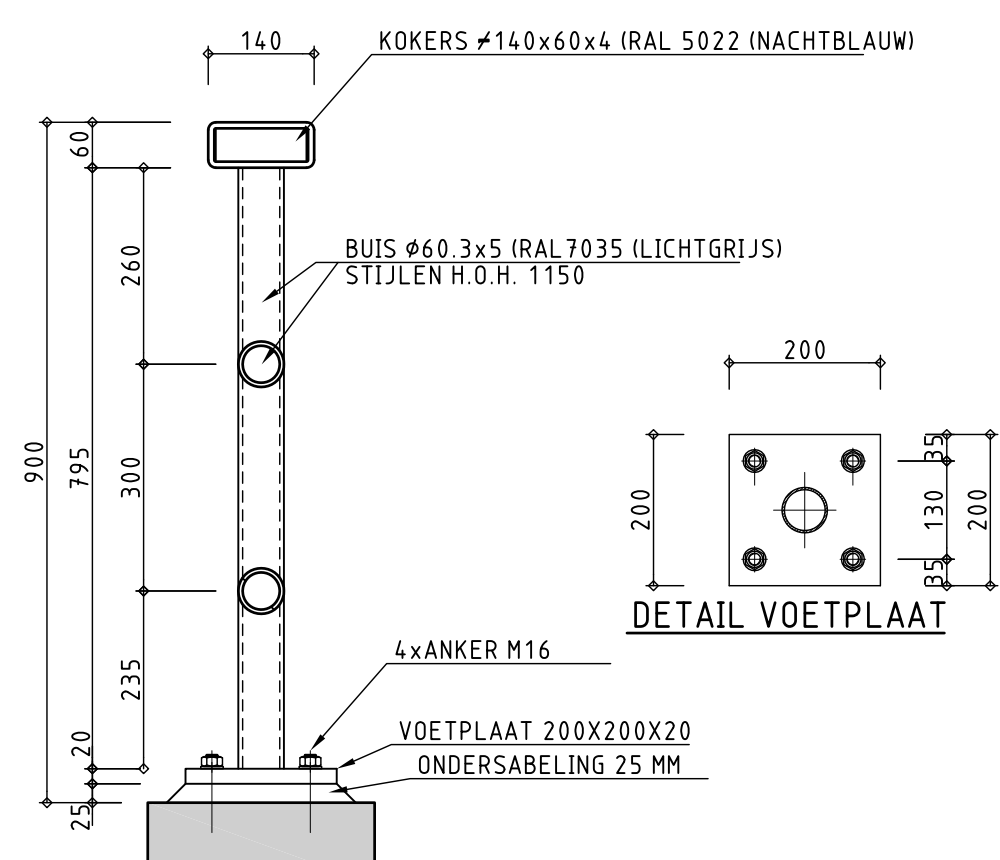
DOORSNEDE D-D

SCHAAL 1:50



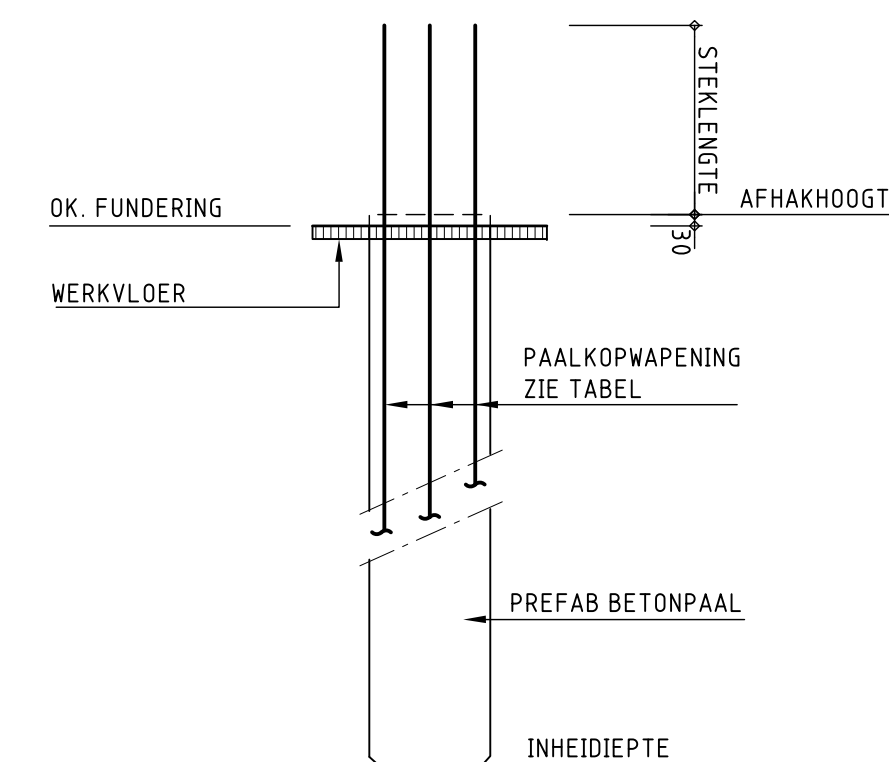
DETAIL DILATATIE LEUNING

SCHAAL 1:5



DETAIL LEUNING

SCHAAL 1:10

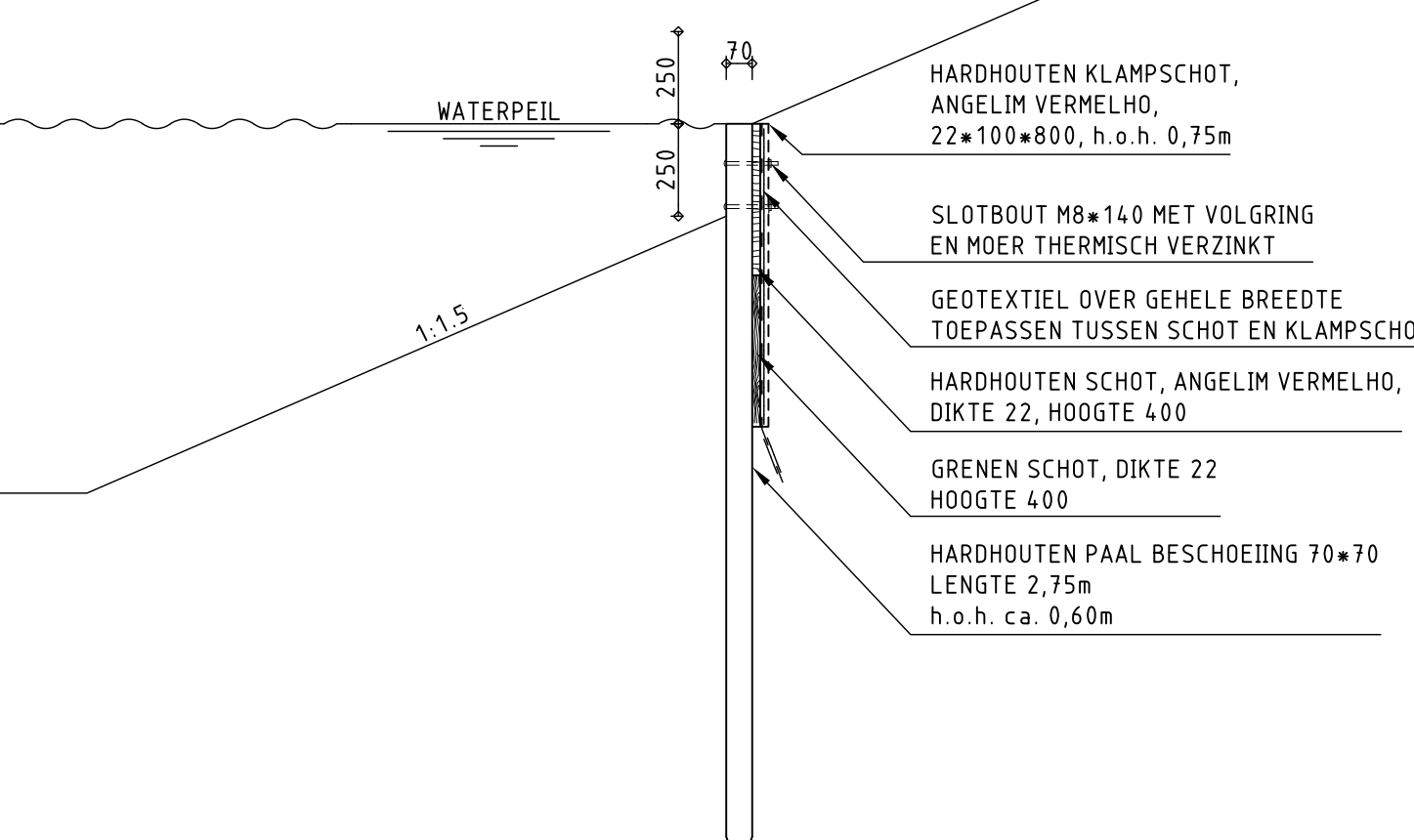


PAALKOP DETAIL

SCHAAL 1:20

PRINCIPE BOVENAANZICHT BESCHOEIING

SCHAAL 1:20



PRINCIPE DOORSNEDE BESCHOEIING

SCHAAL 1:20

PALENRENVOOI

| SYMB. | AANT. | PAALMAAT (IN MM) | RHENVNIAU (T.O.V. N.A.P.) | AFHAKHOOGTE (T.O.V. N.A.P.) | PAALLENTE (IN MM) | BUSZONDEREKEN                  |
|-------|-------|------------------|---------------------------|-----------------------------|-------------------|--------------------------------|
| 1     | 24    | 400x400          | 18.500                    | 3.870                       | 15.500            | PAALKOPWAPENING: 8x 25 L-12 41 |
| 2     | 4     | 20x10            | 17.000                    | NUT                         | 15.800            | STALEN BUSPAAL                 |
| TOTAL | 28    |                  |                           |                             |                   |                                |

OPMERKINGEN

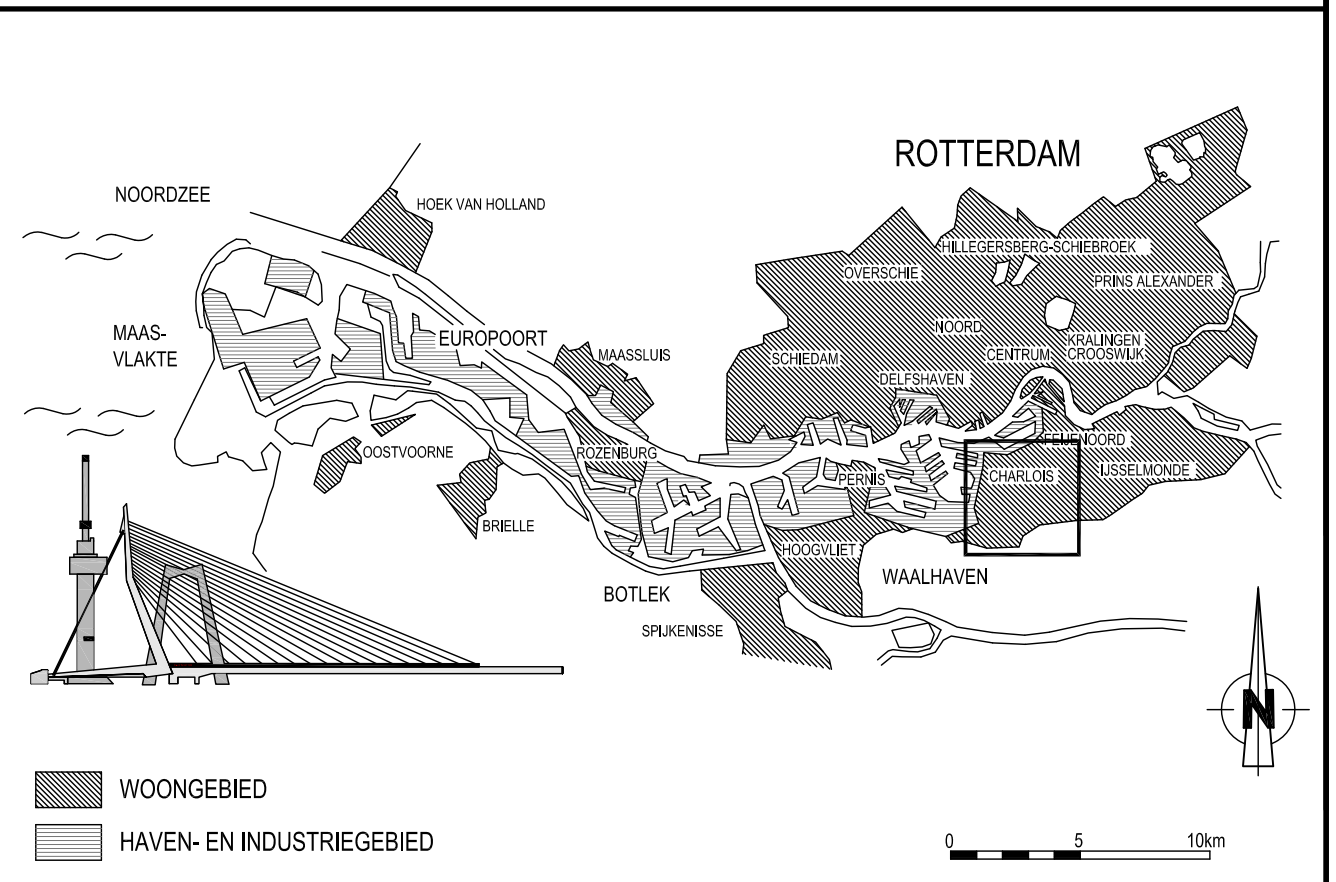
- MATEN IN MILLIMETERS.

- HOOGTEMATEN IN METERS T.O.V. N.A.P.

LEGENDA

|  |           |
|--|-----------|
|  | WERKVLOR  |
|  | SLOOPLIEN |
|  | STORTNAAD |

SITUATIE



VERSIE

| NO.        | VERSIJ                   | VERSIJ        | VERSIJ     |
|------------|--------------------------|---------------|------------|
| 1          |                          |               |            |
| 2          |                          |               |            |
| 3          |                          |               |            |
| 4          | NOTA VAN RIJCHTINGEN     | VSW           | 19-04-2013 |
| 5          | DEFINITIEF T.B.V. BESTEK | VSW           | 22-03-2013 |
| Verk.      | Ondersluiting            | Tekenaar      | Datum      |
| Bouwkosten | OBV11-B-BT-261 (BLAUW)   | Projectleider | Verwijzing |

|  |  |                              |                               |                                |
|--|--|------------------------------|-------------------------------|--------------------------------|
|  | Gemeente Rotterdam<br>Gemeentewerken<br>Ingenieursbureau | Gedirecteerd<br>R. DALMEIJER | Gedirecteerd<br>M.A.G. GOVERS | Gedirecteerd<br>OBV11-B-BT-261 |
|--|--|------------------------------|-------------------------------|--------------------------------|

## DE BLAUWE VERBINDING SLUIS

|               |                |                |                |
|---------------|----------------|----------------|----------------|
| BESTEKSTOKING | OBV11-B-BT-261 | OBV11-B-BT-261 | OBV11-B-BT-261 |
| V. SWITZER    | R. DALMEIJER   | M.A.G. GOVERS  | OBV11-B-BT-261 |
| 01-03-2012    | 01-03-2012     | 01-03-2012     | 01-03-2012     |