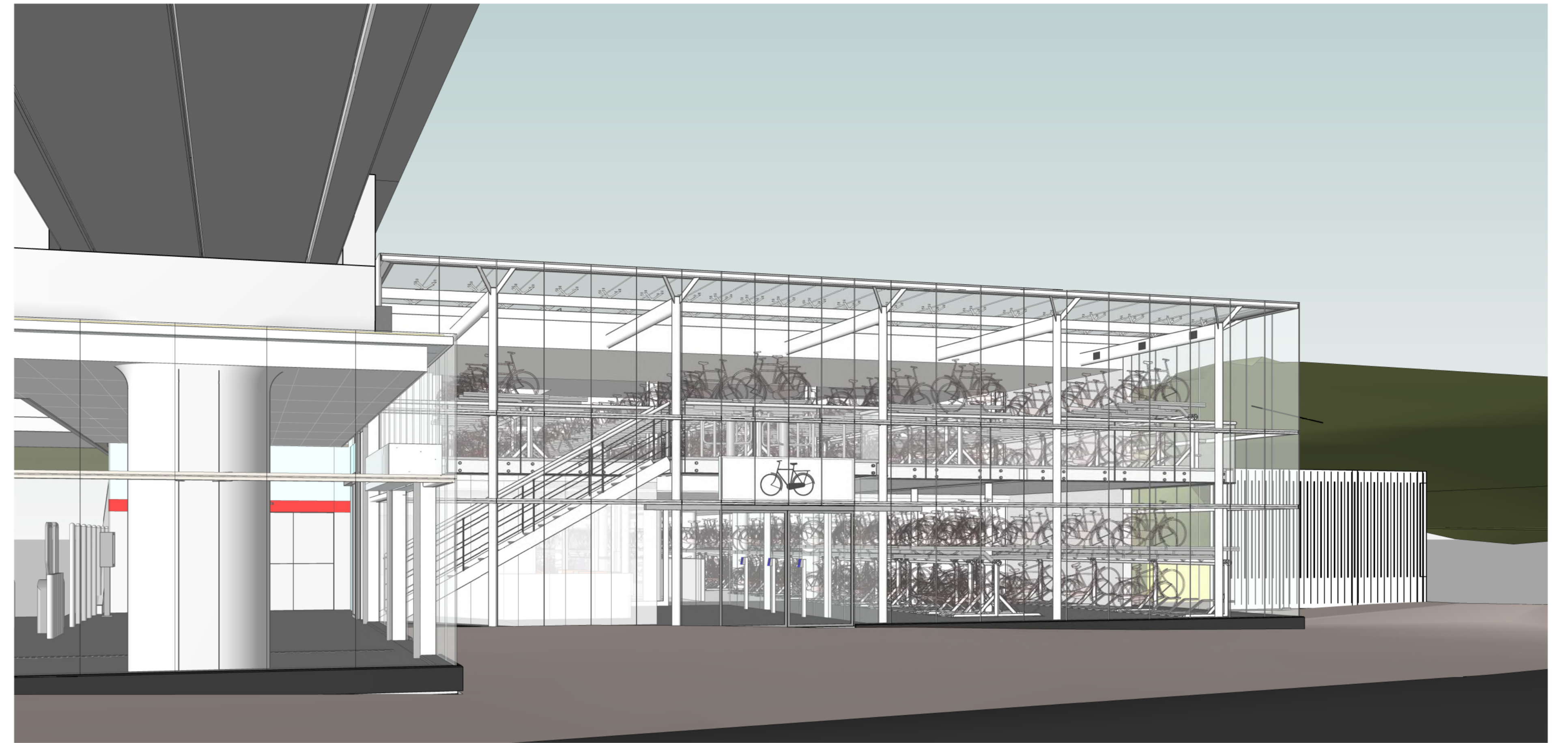
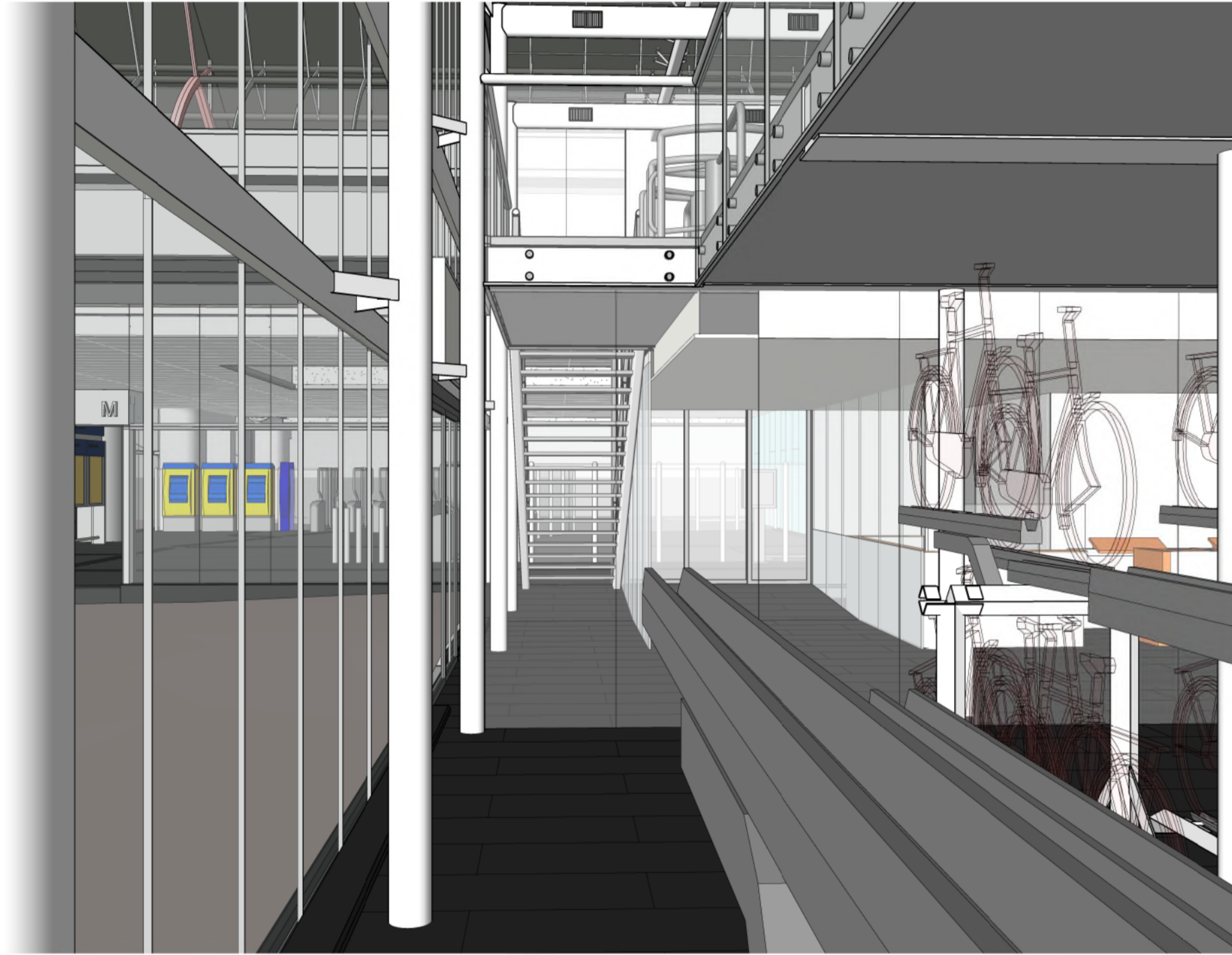


3D View 7
schaal:



3D View 25
schaal:



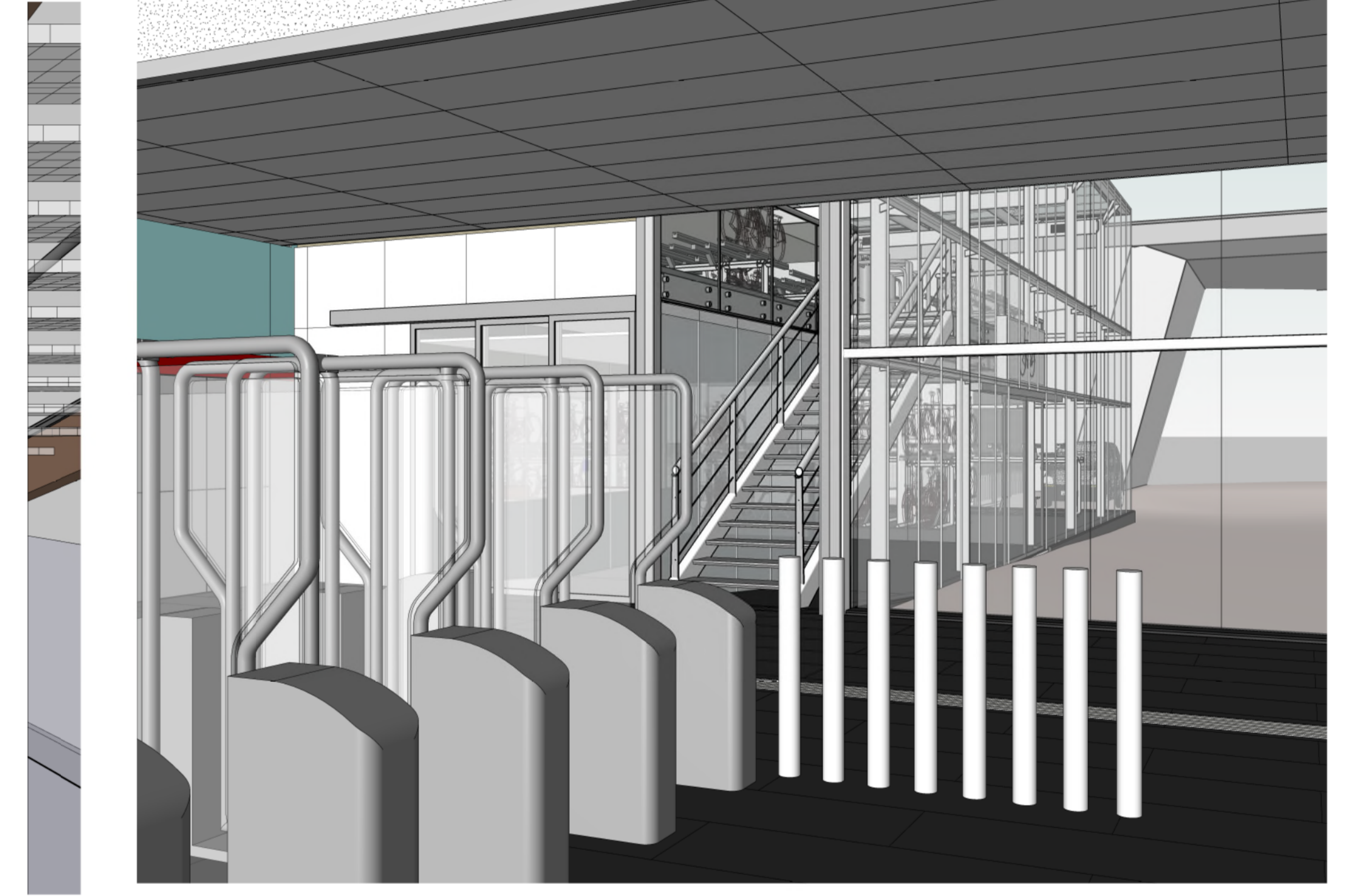
3D View 2



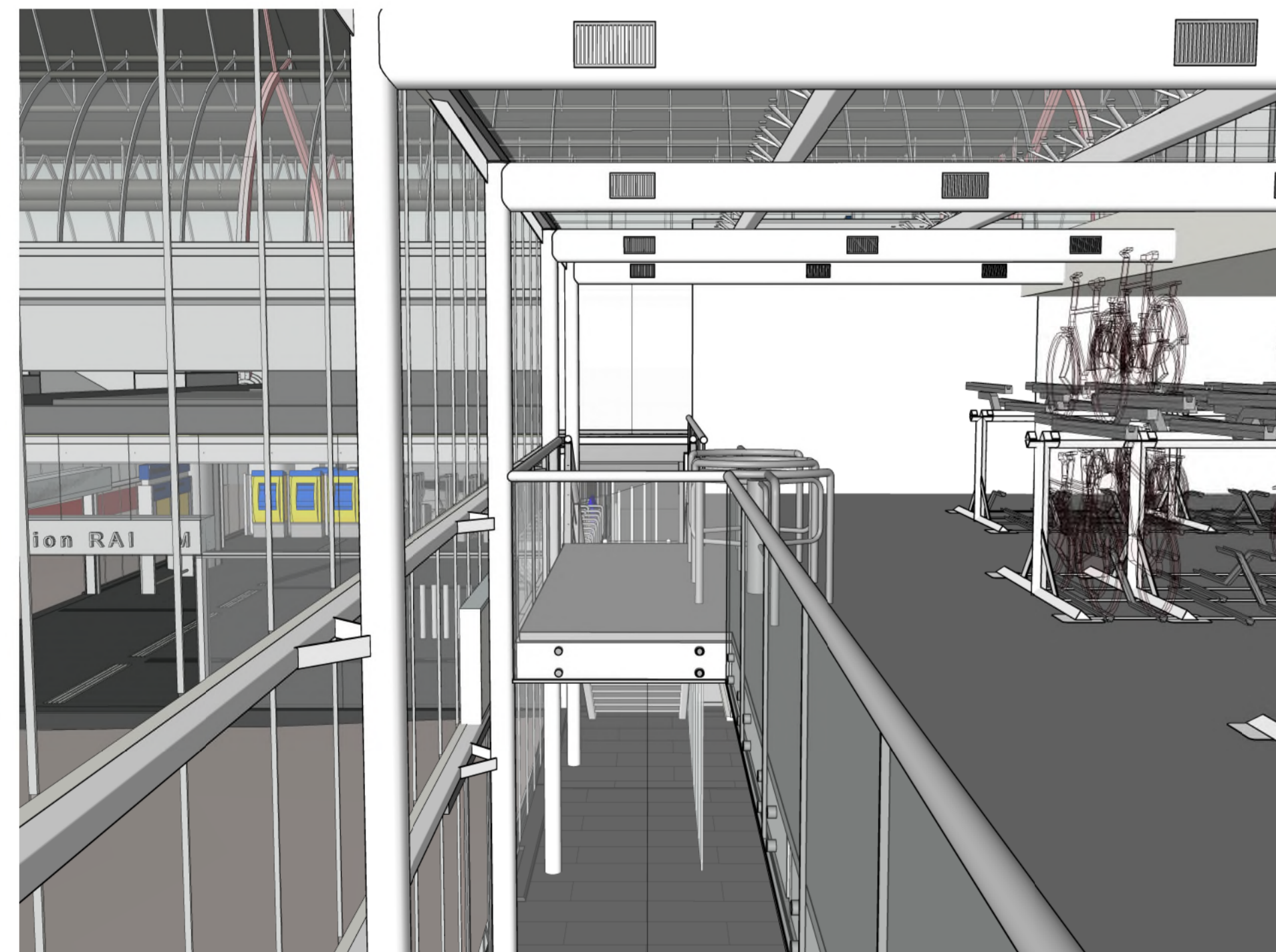
3D View 6



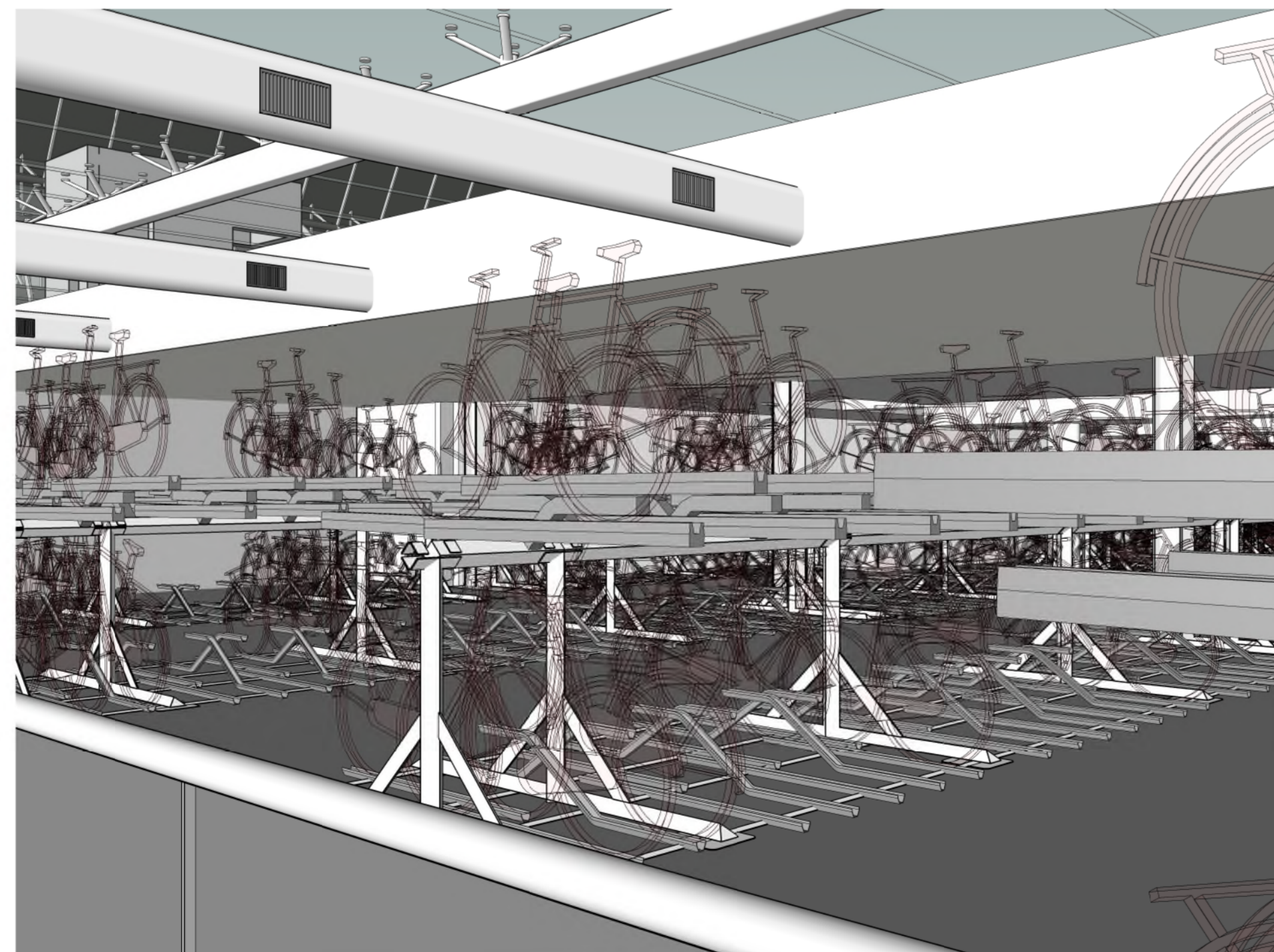
3D View 1



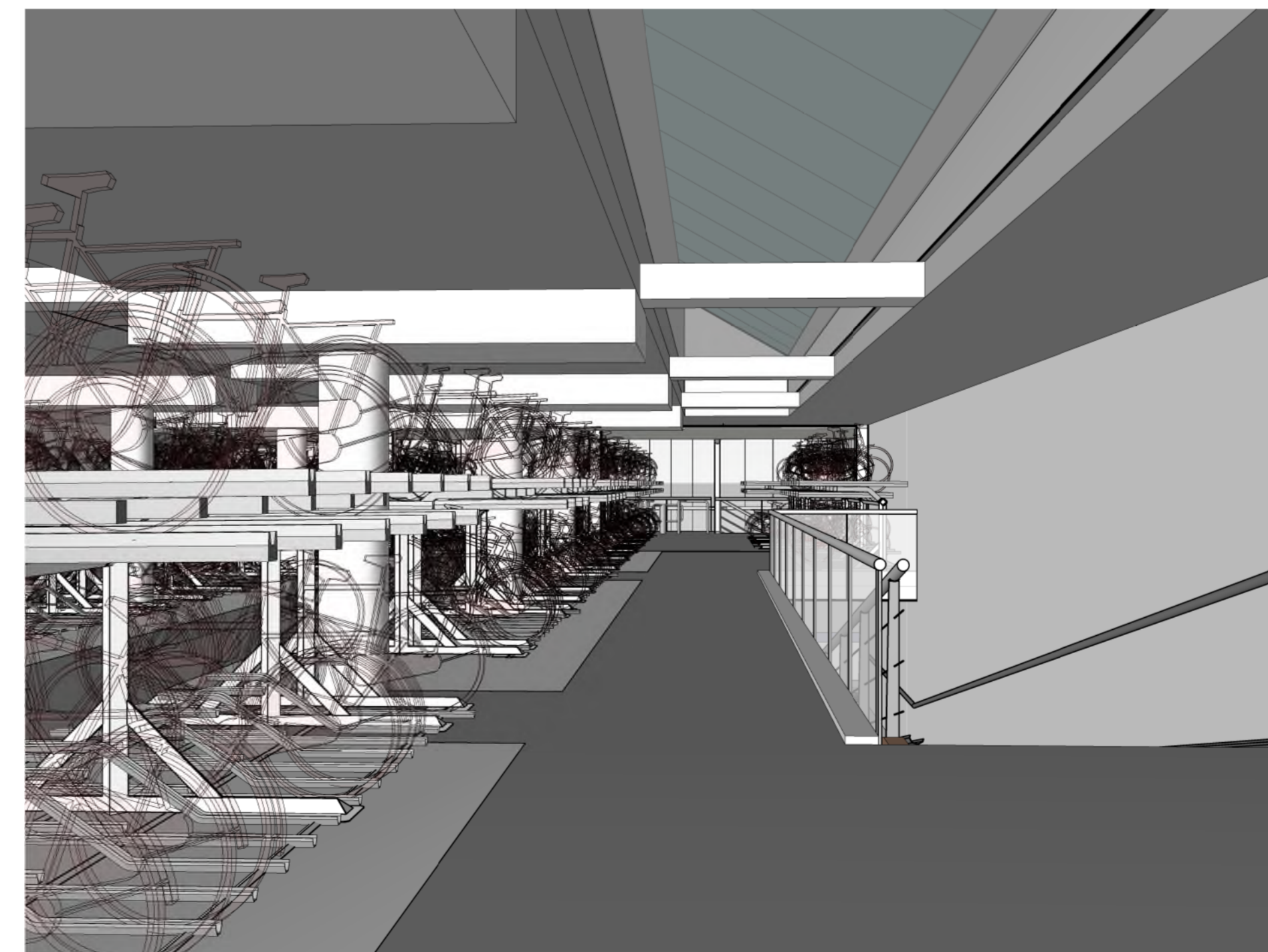
3D View vanuit stationshal



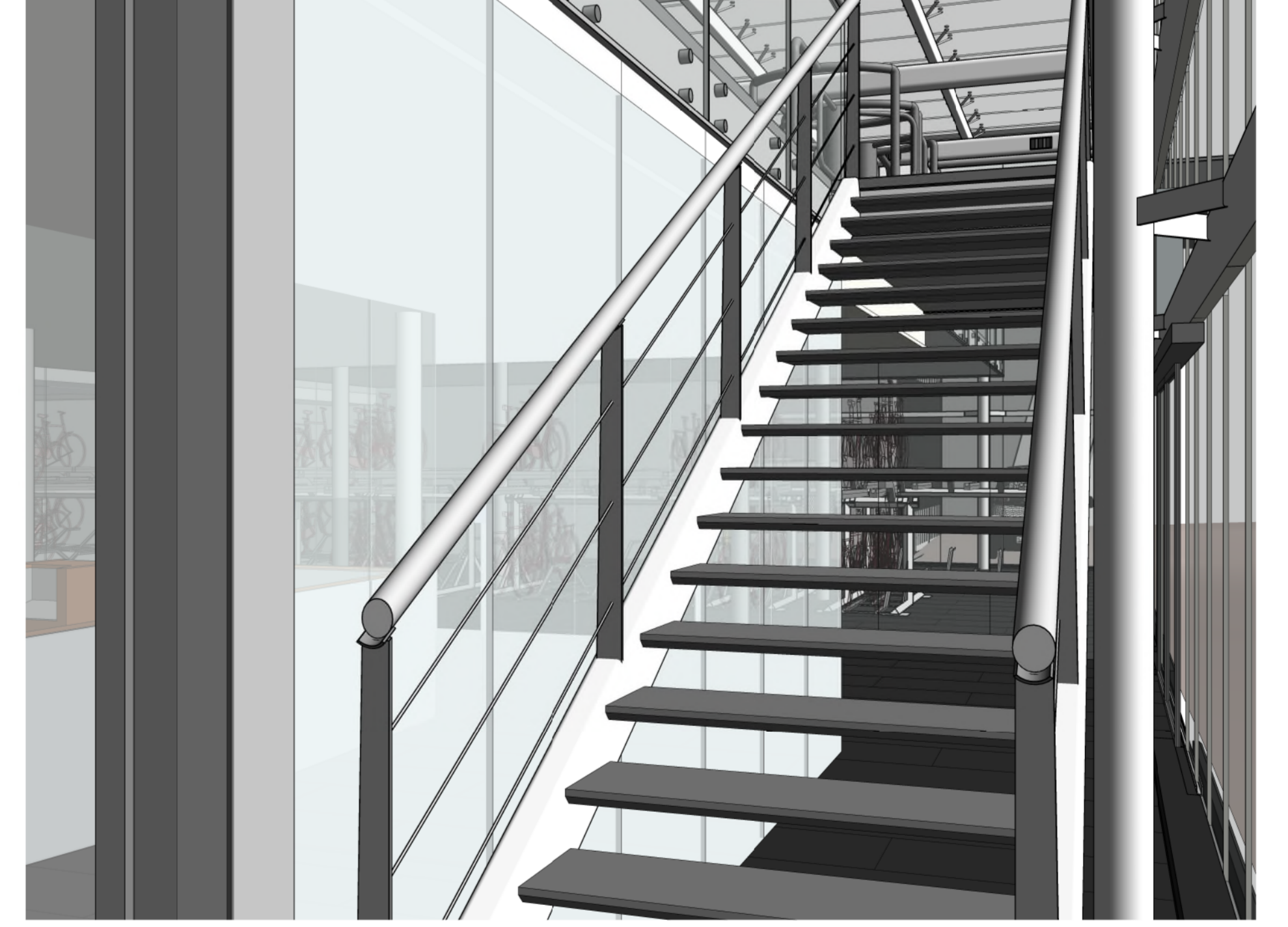
3D View 3



3D View 4



3D View 5



3D View vanaf trap

Projectnummer	RH004385	Gemeente Amsterdam	
Identificatiecode	2.0	Amsterdam	
Modelversie	01-09-2017	Uitbreiding metrohal Station RAI en Fietsenstalling	
Revisieversie	2.0		
Versiedatum	01-09-2017		
Documentstatus	Vrijgegeven	Definitief ontwerp	
Formaat	1189 x B41	Visualisaties	
Schaal		Fietsenstalling	
Modeltype	DLLA, Vermeden		
Beleidsnummer	n.v.t.		
Projectleider	Wolfswinkel JC van		
Vrijgegeven	JN van de Lune	DO-F-B-07	
Divisie: RA-GE-COBK			
Afdeling: Constructief Ontwerpen			
Postbus 2855 3500 GW Utrecht			