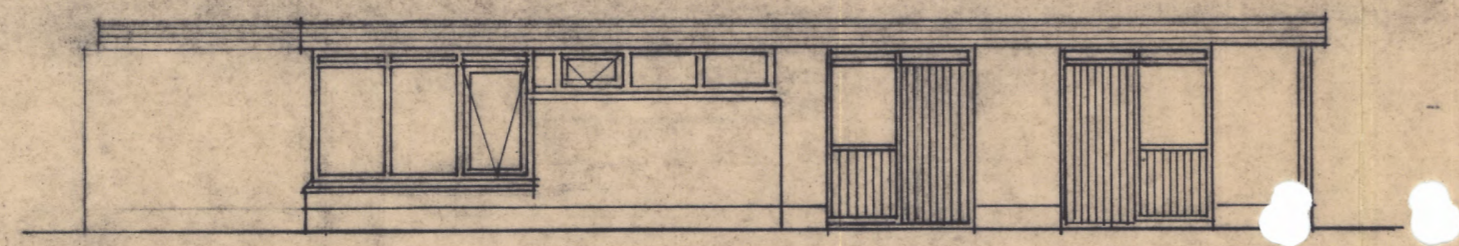
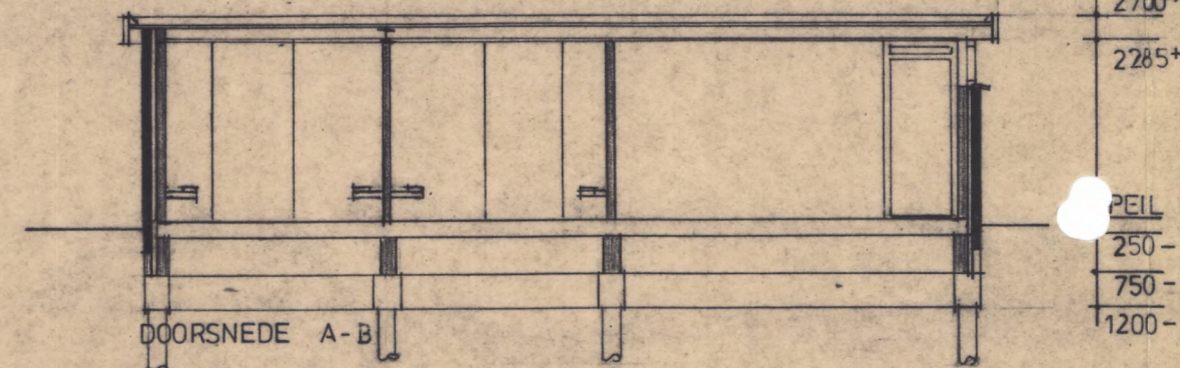


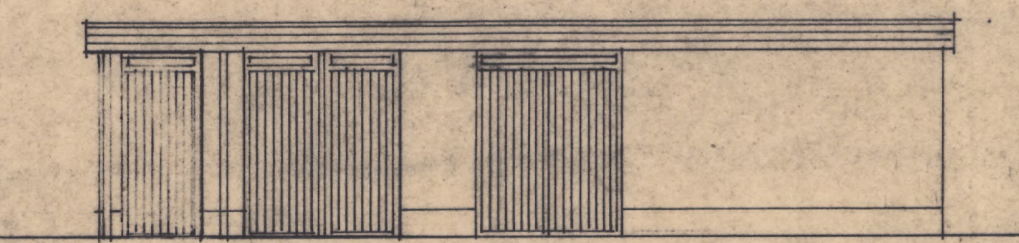
ZUID - WESTGEVEL GEBOUW A



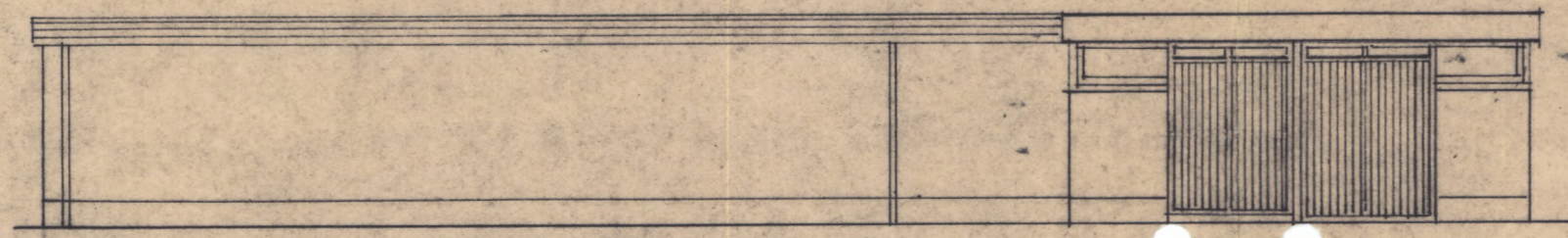
ZUID - OOSTGEVEL



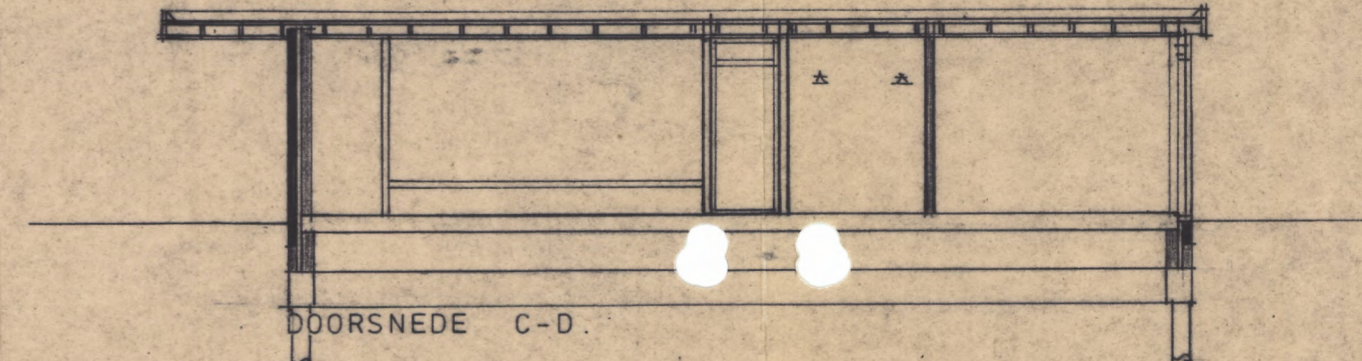
DOORSNEDE A-B



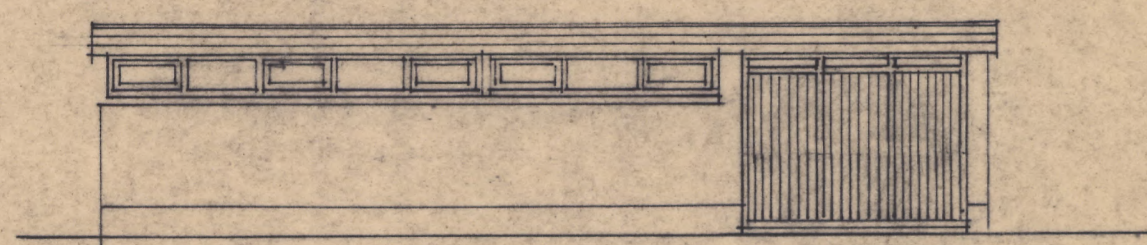
NOORD - OOSTGEVEL



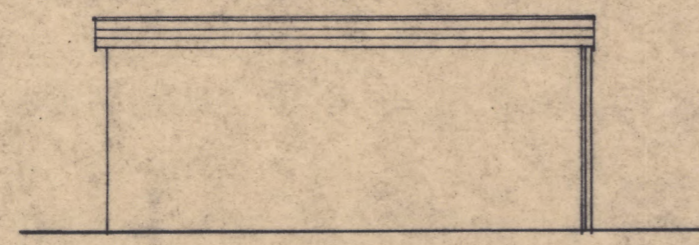
NOORD - WESTGEVEL



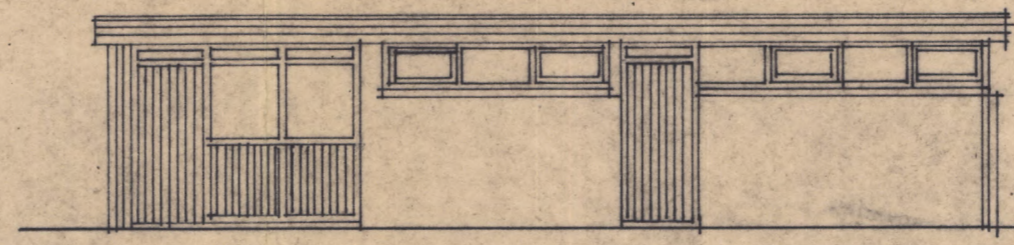
DOORSNEDE C-D



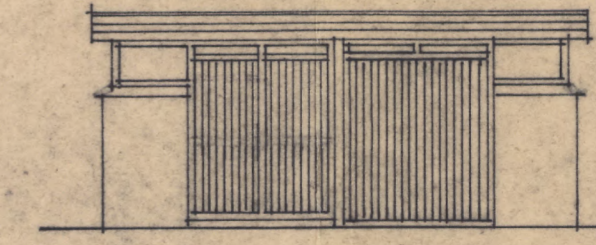
ZUID - WESTGEVEL GEBOUW B



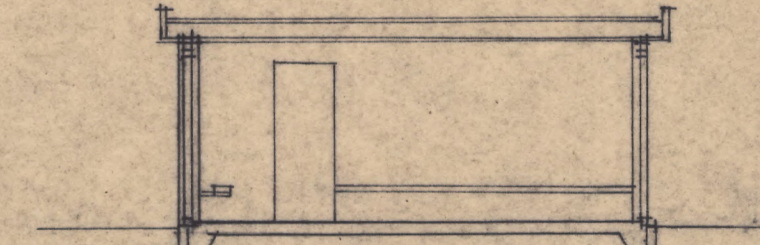
ZUID - OOSTGEVEL



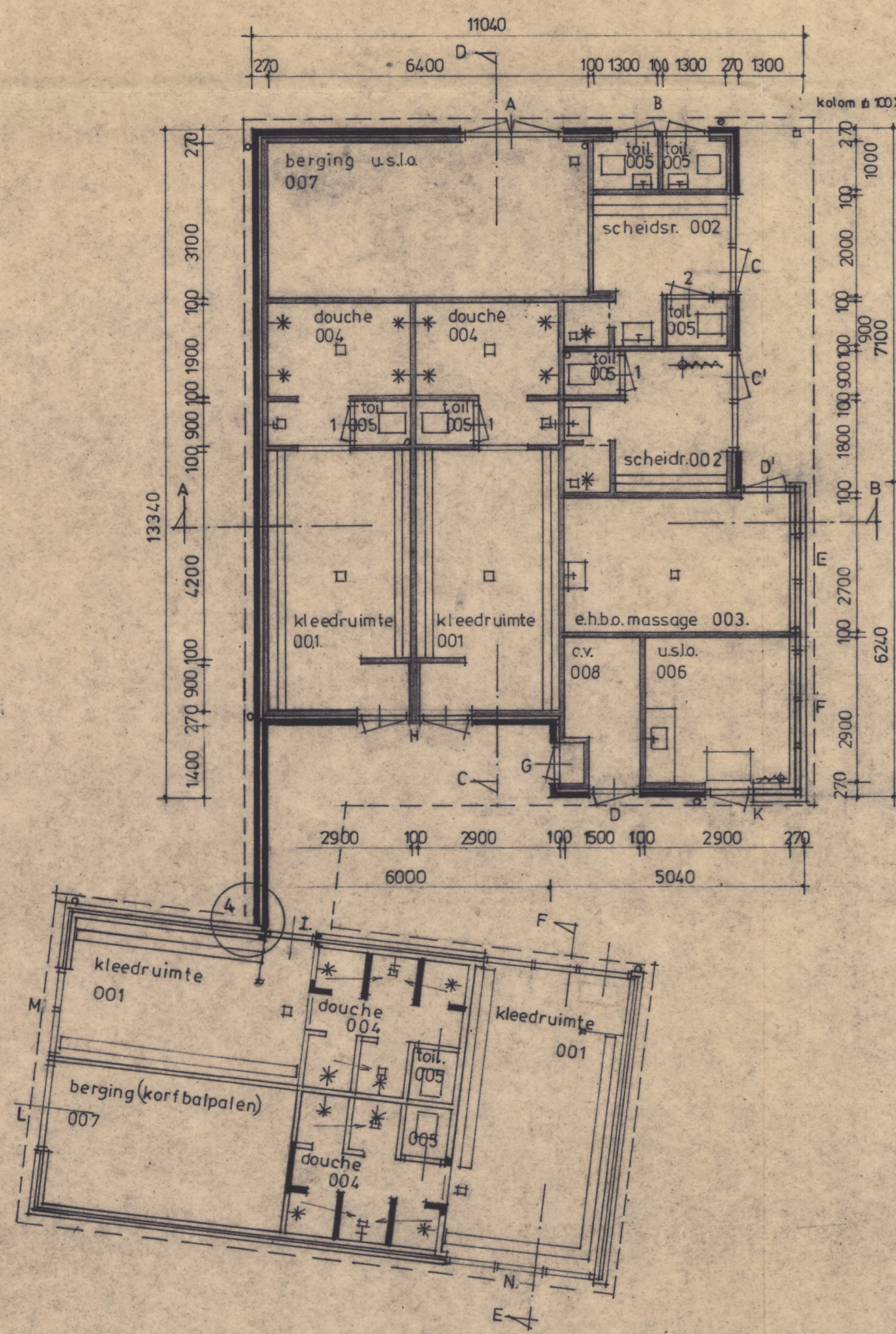
NOORD - OOSTGEVEL



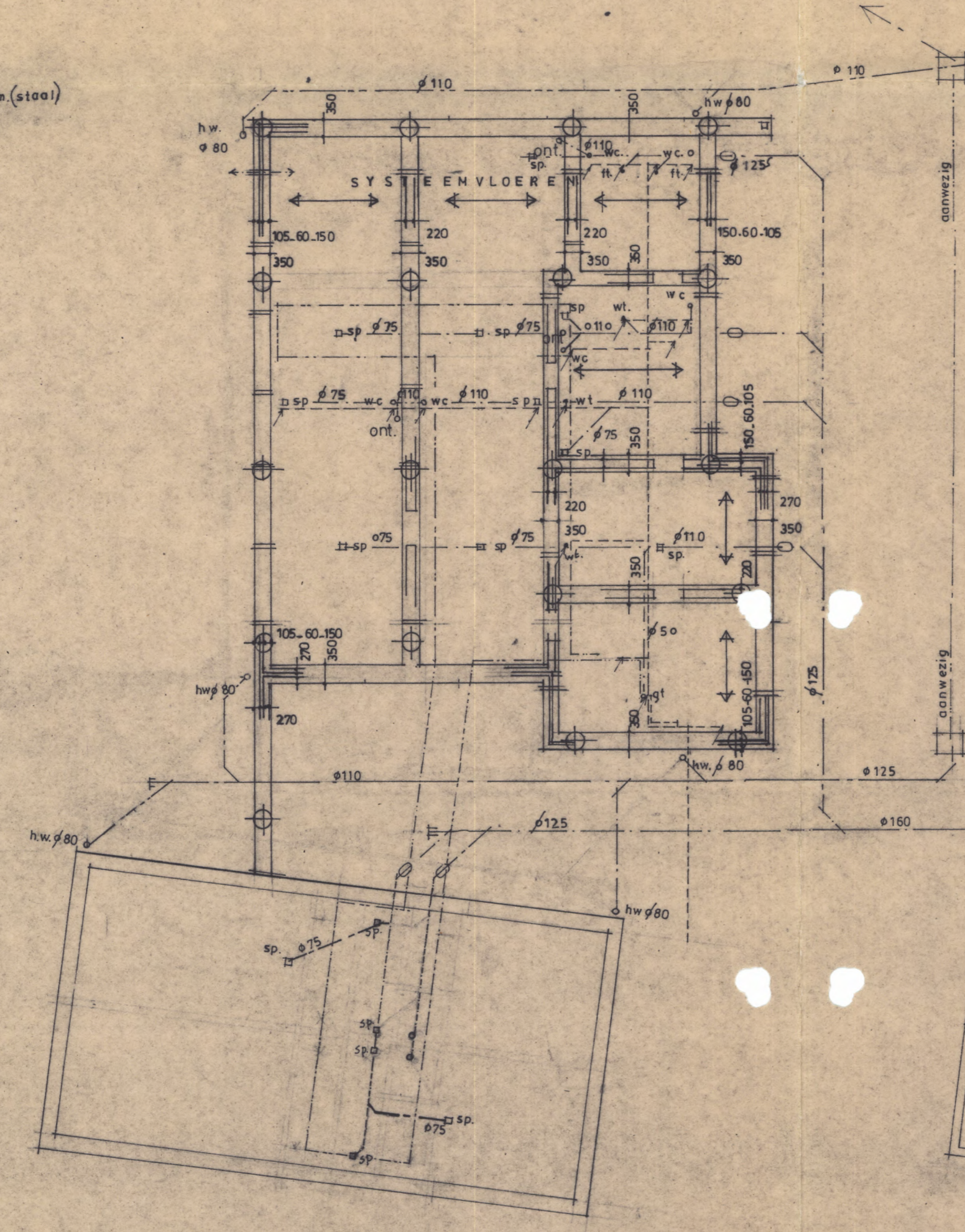
NOORD - WESTGEVEL



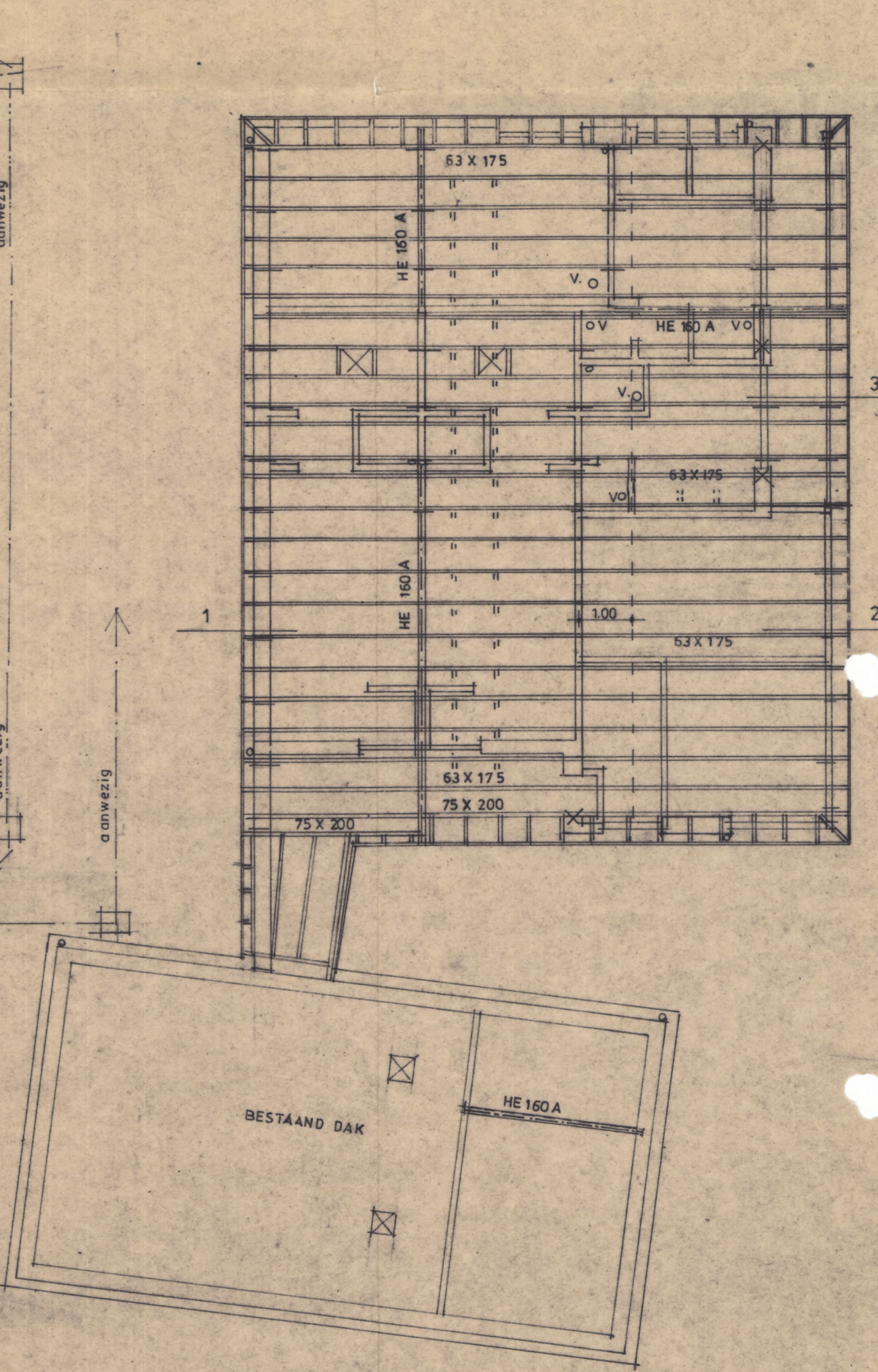
DOORSNEDE E-F



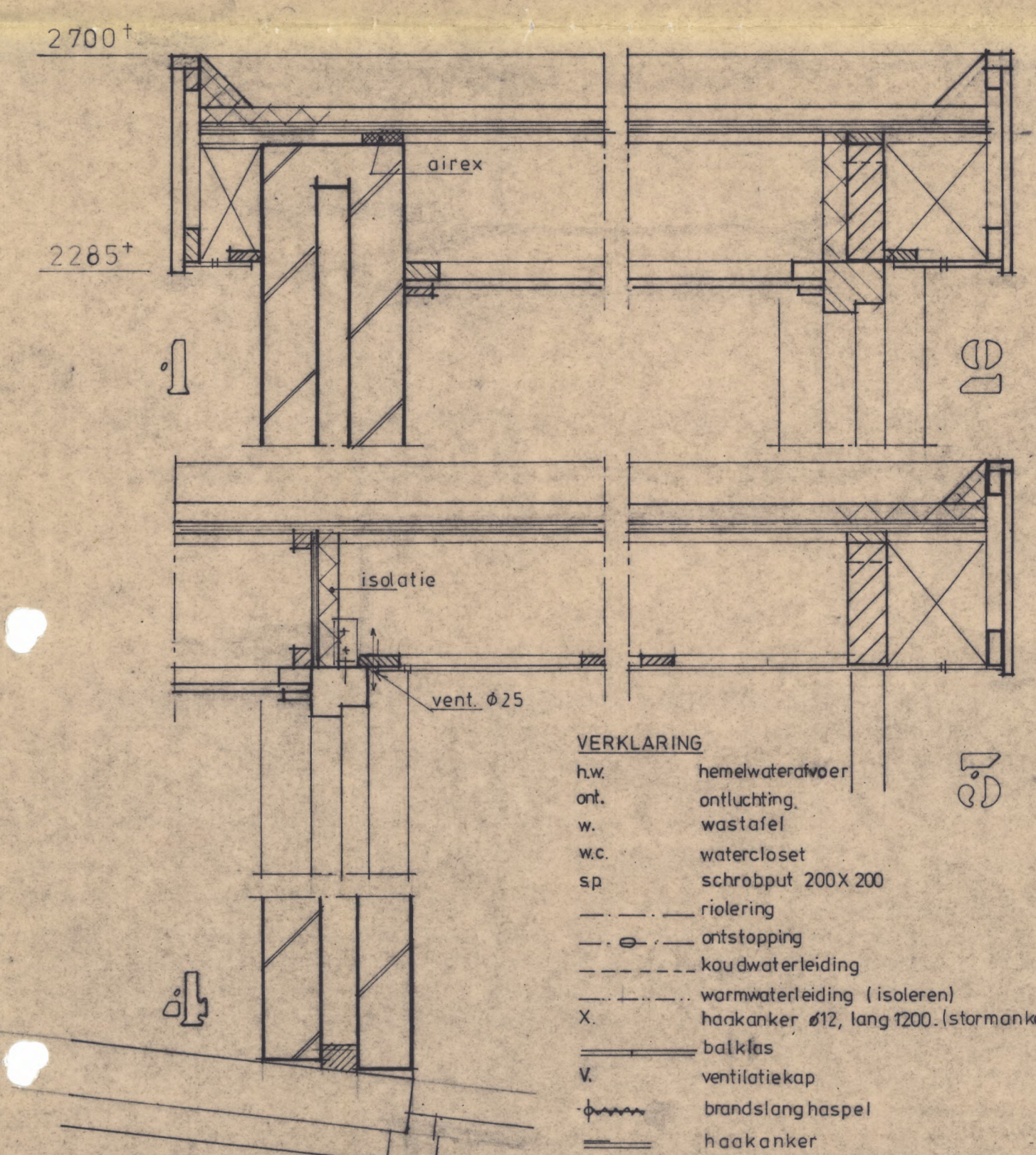
PLATTEGROND



FUNDERING - RIOLERING



KAPPLAN



- VERKLARING**
- h.w. hemelwaterafvoer
 - ant. ontluchting
 - w. wastafel
 - w.c. watercloset
 - sp. schroefput 200X200
 - riolering
 - antstopping
 - kouwaterleiding
 - warmwaterleiding (isoleren)
 - X. haakanker ø12, lang 1200. (storkanker)
 - balkflas
 - V. ventilatiekap
 - brandslanghaspel
 - haakanker

R.O.V.U. - DIENST BOUWEN EN WONEN			
WERK:	WIJZIGING EN UITBREIDING VAN EEN KLEEDGEBOUW OP DE SPORTTERREINEN AAN DE LOEVENHOUTSEDIJK TE UTRECHT.	AFD. OORZ.	<i>6/4/03</i>
OMSCHR:	BESTEKTEKENING NIEUWBOUW GEBOUW A EN WIJZIGING GEBOUW B.	DIR:	<i>13-4-83</i>
GET:	J.S.F.	GEW:	
GEC:		BESTEK:	<i>10.6.1983</i>
DAT:	<i>23-6-82</i>	IN BLADEN	
		BLAD:	
		SCHAAL:	1 : 100
		TEK.NR.:	9381-8
		FORM:	60 X 84