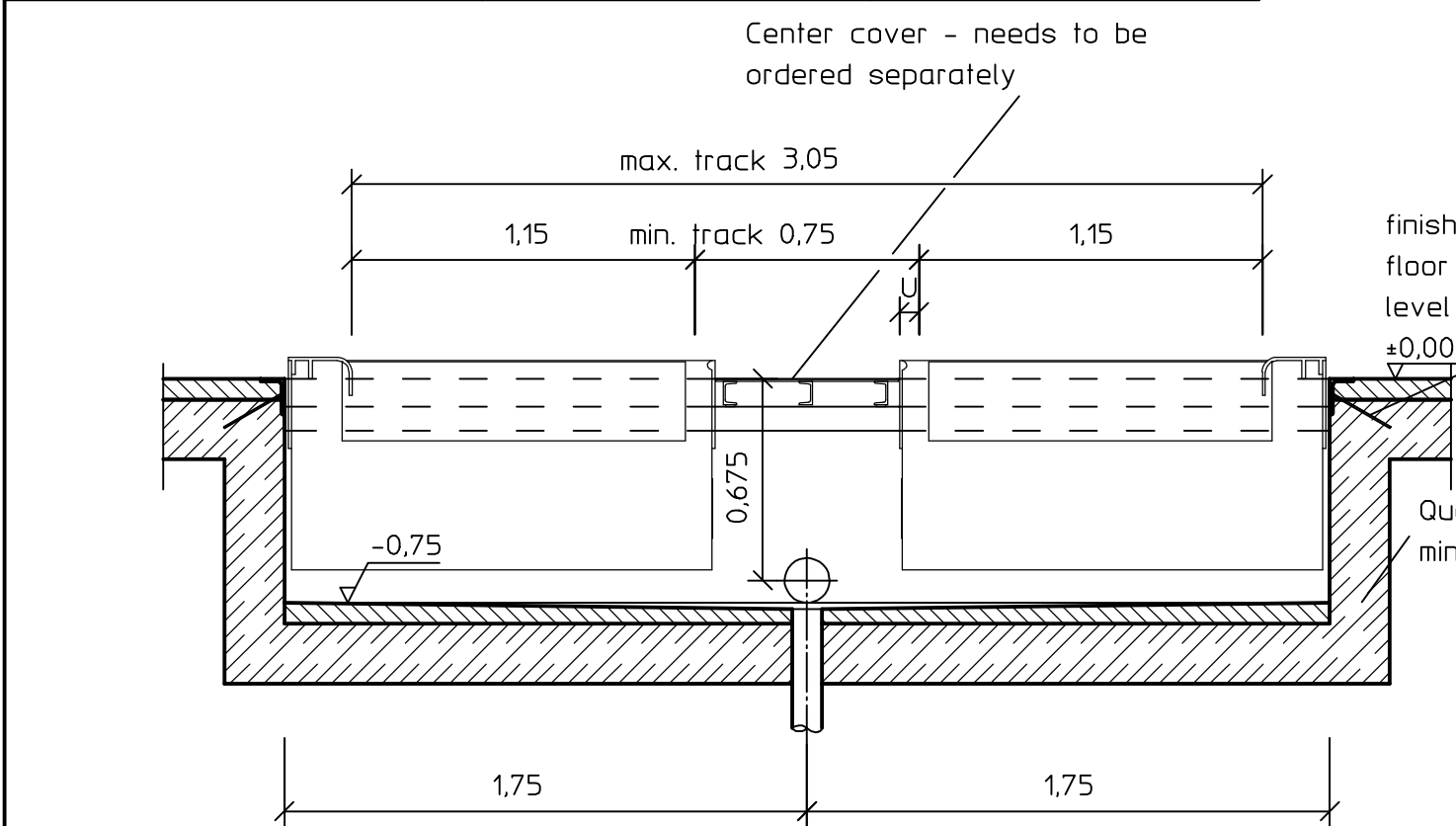
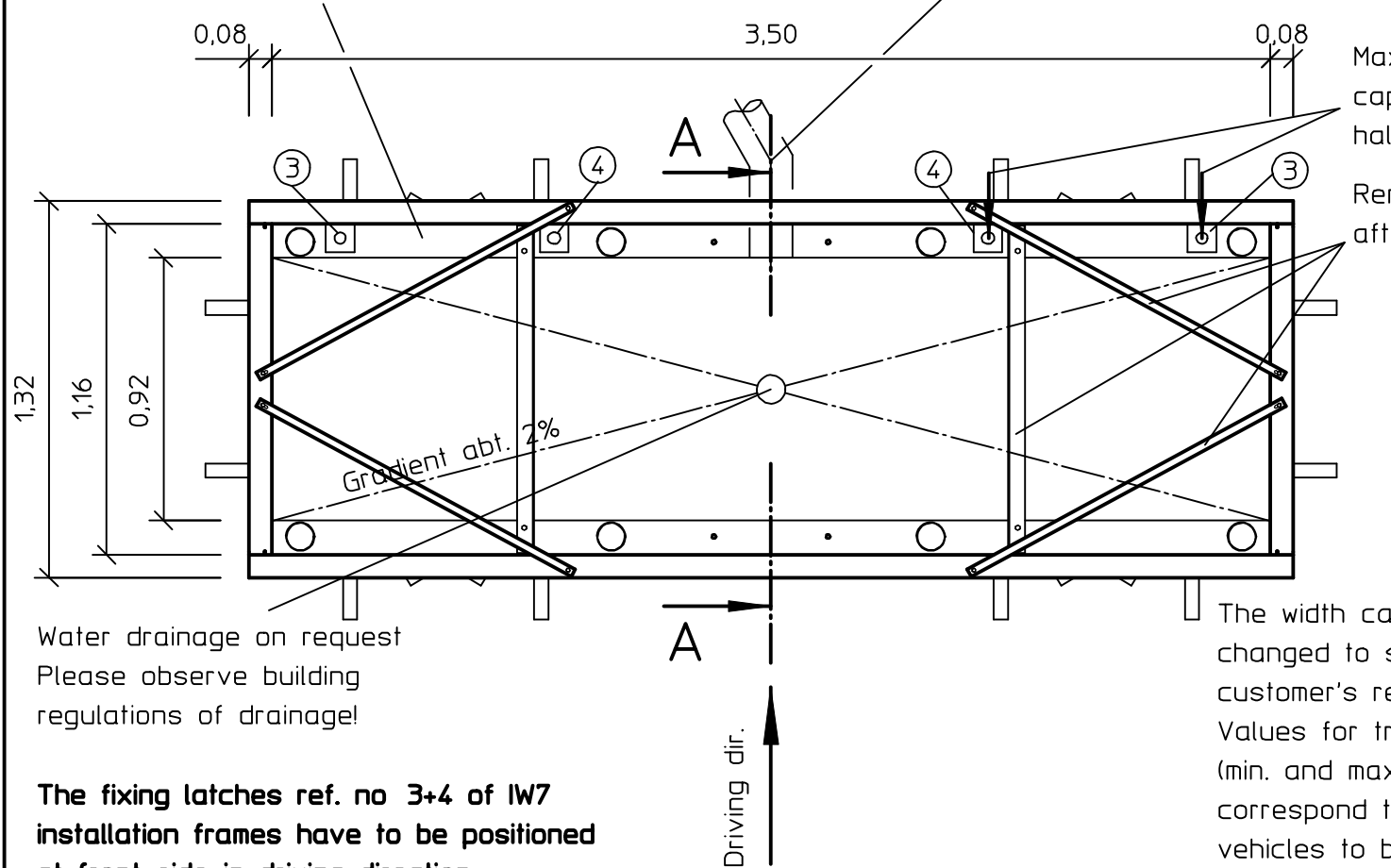


	motor transmission 1:1	motor transmission 3:4
overhang size U in mm	66	97



Angle steel pit frame according to drawing No F7202, sheet 3 (not standard equipment); rectangularity of foundation frame must be checked before concreting and adjusted if necessary

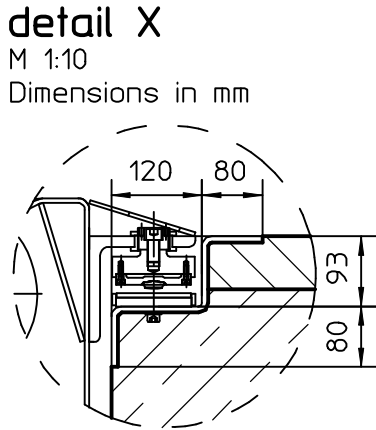
Frame must be concreted exactly horizontal (max. deviation ±3mm) and flush with finished floor level.



The fixing latches ref. no 3+4 of IW7 installation frames have to be positioned at front side in driving direction.

Finished floor must be horizontal in the area of the Brake Tester!

Before embedding in concrete, the claws must be bent downwards



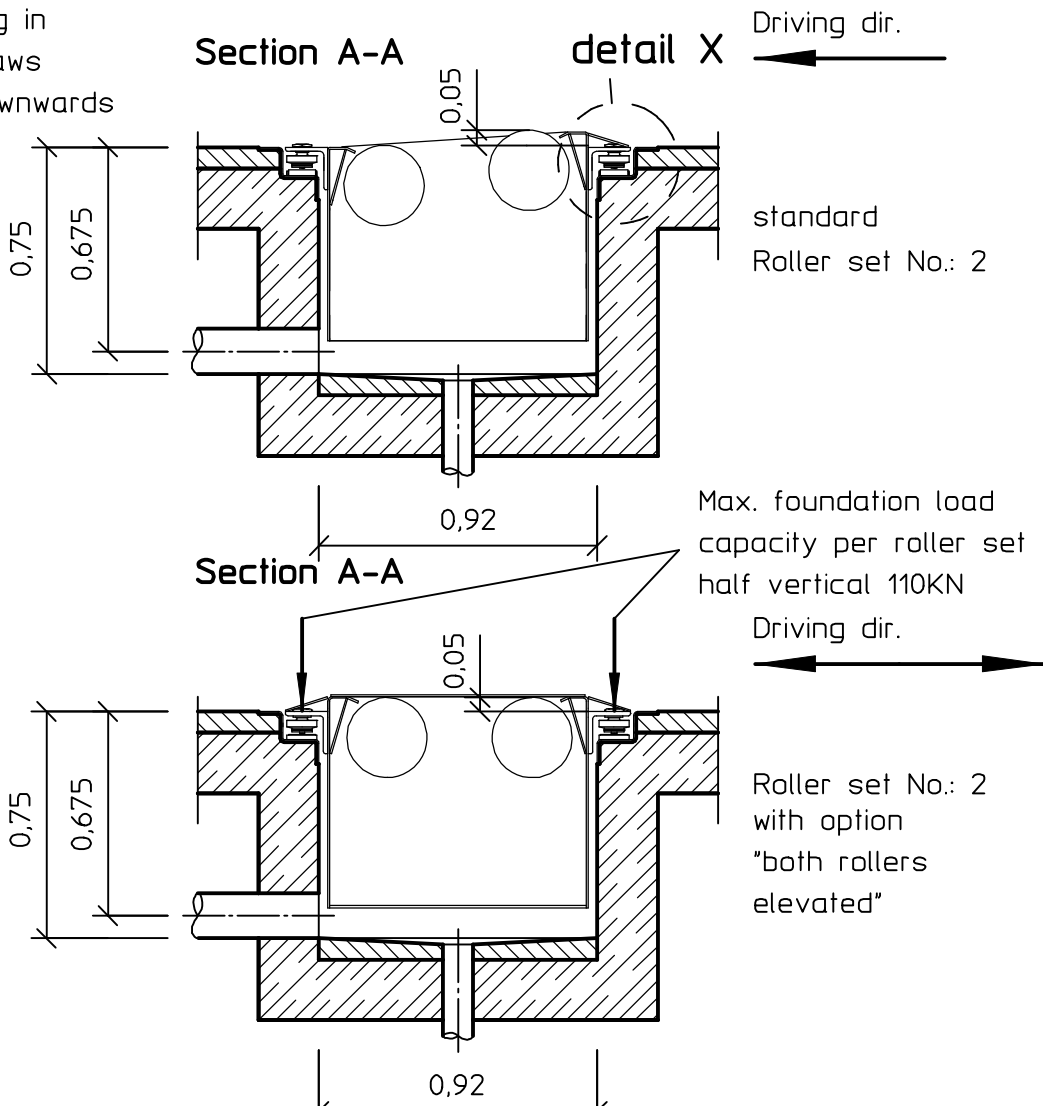
Max. foundation load capacity per roller set half horizontal 30KN

Remove installation support after embedding in concrete.

All dims. in m
The buyer is responsible for checking all dimensions!
Please do not use empty pipe elbows beyond 45°.

The width can be changed to suit customer's requirements!
Values for track (min. and max.) must correspond to the vehicles to be checked!

Brake Tester IW7
Roller set No.: 2
without working pit
Option: Surface for weighing system



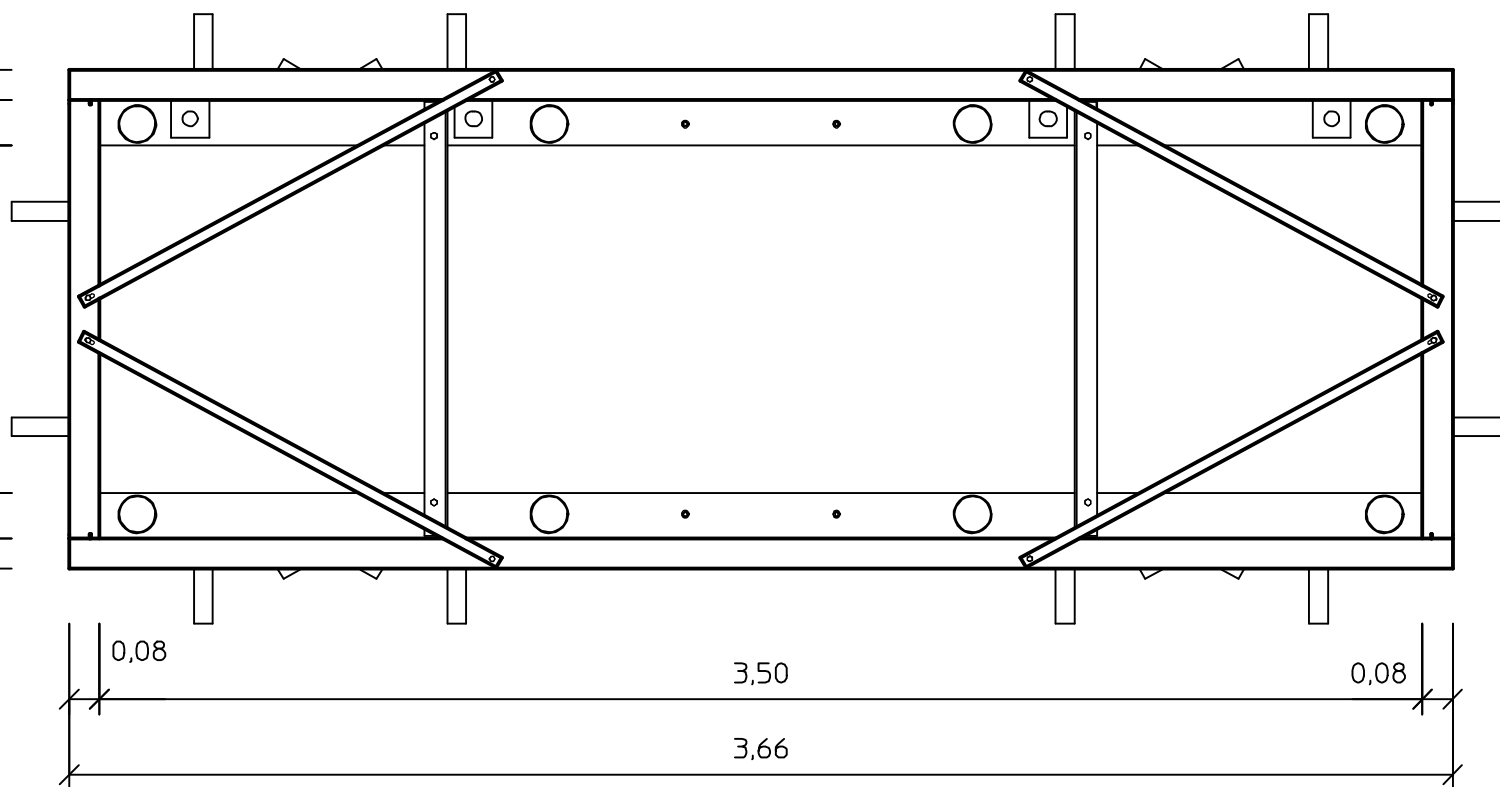
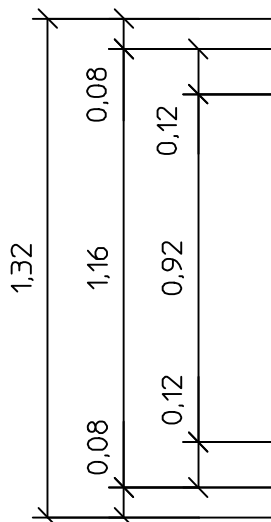
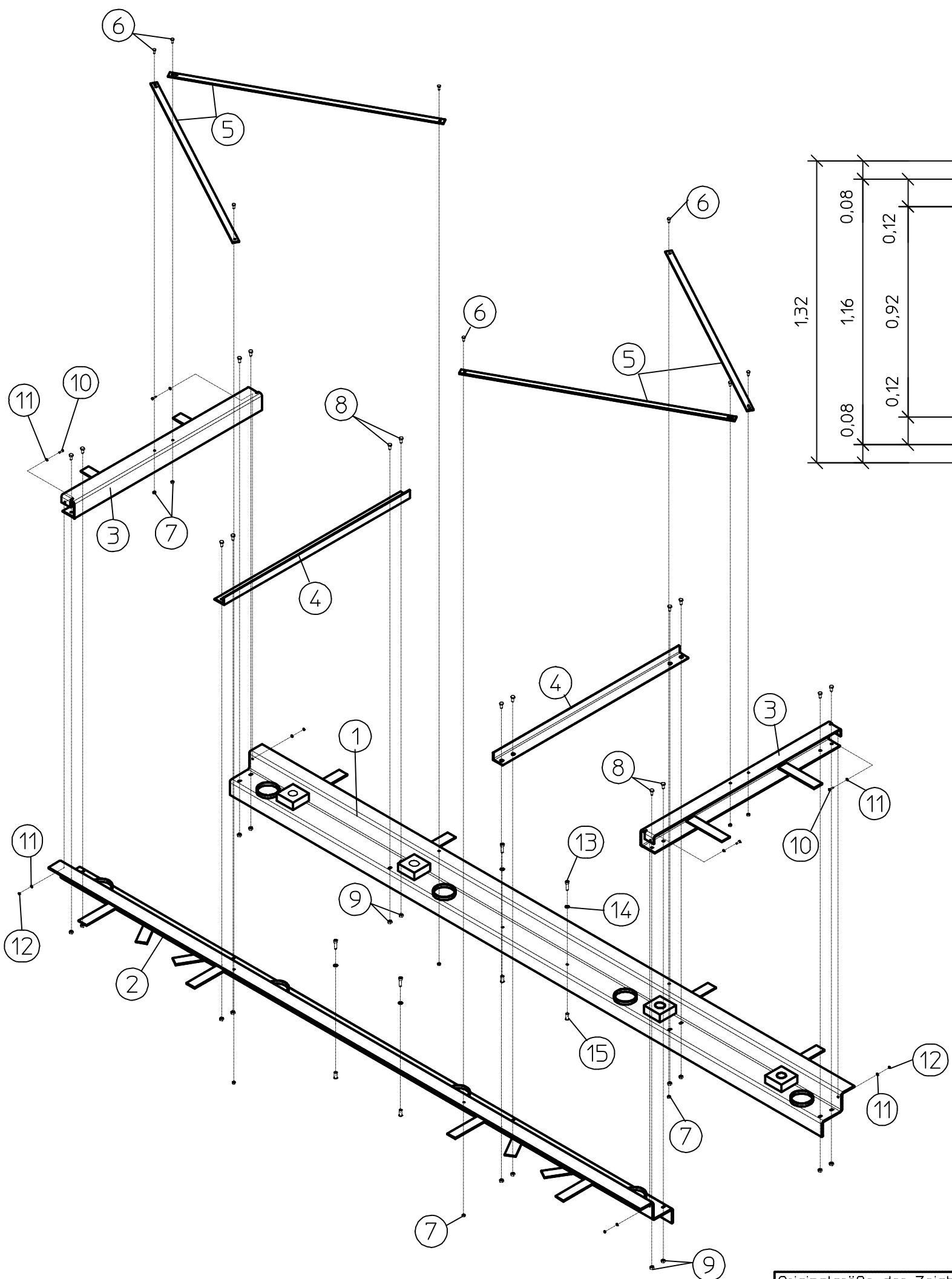
Power supply: Power line to display unit, cable guide from the rear and overhang approx. 2m.

driving power in kW	fuse protection in A slow	Power line
2x 9	50	3x 400V+N+PE
2x 11	63	3x 400V+N+PE
2x 16	80	3x 400V+N+PE


Bearbeitungsmaße ohne Toleranzangabe nach DIN ISO 2768-mK	Schutzvermerk nach DIN 34 beachten!	Maßstab 1:25	Gewicht
Länge	Toleranz	Datum	Name
über 0,5-6	±0,1	Bearb. 26.01.1998	Grf.
über 6-30	±0,2	Gepr. 14.03.2007	Ths
über 30-120	±0,3	Norm	
über 120-400	±0,5		
über 400-1000	±0,8		
über 1000-2000	±1,2		
über 2000-4000	±2,0		
B 6391	08.01.2007	Ths.	
Ind.	Änd.-Nr.	Datum	Name
Originalgröße der Zeichnung: A3		Ursprung:	Ers. f.:04008 00.01001 Ers. d.:

Benennung	
Fpl IW7 RS2 ohne Grube mit Waage	
Zeichnungsnummer	Index
F7202	B
	Blatt 1 von 2

Assembly of angle iron installation frame
IW7 RS2 without working pit



Part No.	Deskription	pcs.
1	Support rail	1
2	Section rail	1
3	Spacer rail	2
4	Spacer	2
5	Installation aid	4
6	Hexagon head screw M8x16	8
7	Nut M8-8	8
8	Hexagon head screw M10x20	16
9	Nut M10-8	16
10	Hexagon head screw M6x20	4
11	Nut M6	4
12	Washer M6	8
13	Cylinder head screw M10x35	4
14	Washer M10	4
15	Threaded sleeve M10	4

Bearbeitungsmaße ohne Toleranzangabe nach DIN ISO 2768-mK				Schutzvermerk nach DIN 34 beachten!		Maßstab 1:20		Gewicht			
						Werkstoff, Halbzeug, Rohteil-Nr. usw English					
Länge		Toleranz			Datum	Name		Benennung Winkleisenrahmen IW7 RS2 ungeteilt			
über 0,5-6		±0,1		Bearb	26.01.1998	Grf.					
über 6-30		±0,2		Gepr	14.03.2007	Ths					
über 30-120		±0,3		Norm							
über 120-400		±0,5									
über 400-1000		±0,8									
über 1000-2000		±1,2									
über 2000-4000		±2,0									
								Zeichnungsnummer		Index	Blatt
								F7202		B	3
B 6391		08.01.2007		Ths.						von 3	
Ind.	Änd.-Nr.	Datum	Name	Ursprung:		Ers. f.: 04008 00.01001		Ers. d.:			