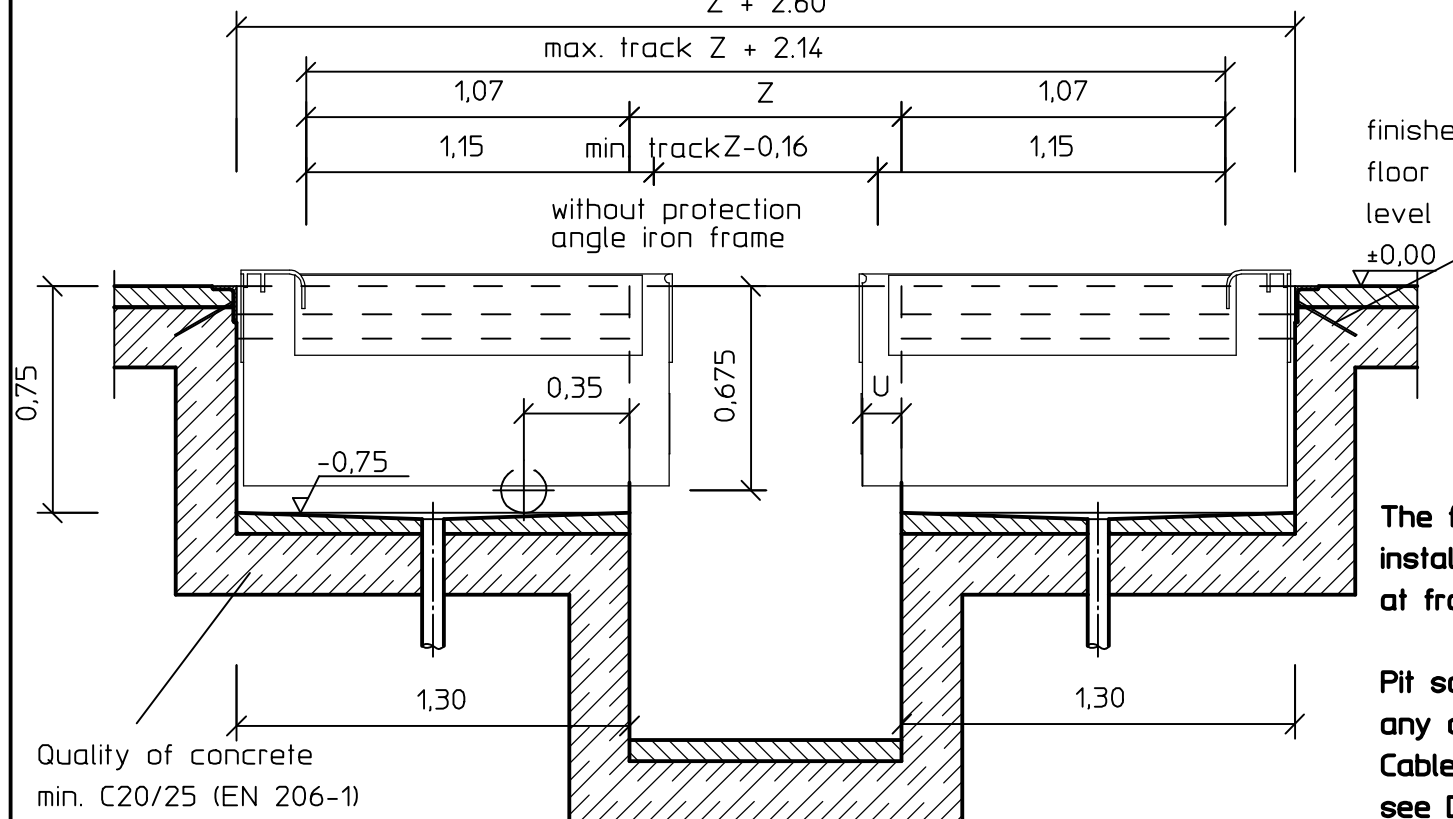
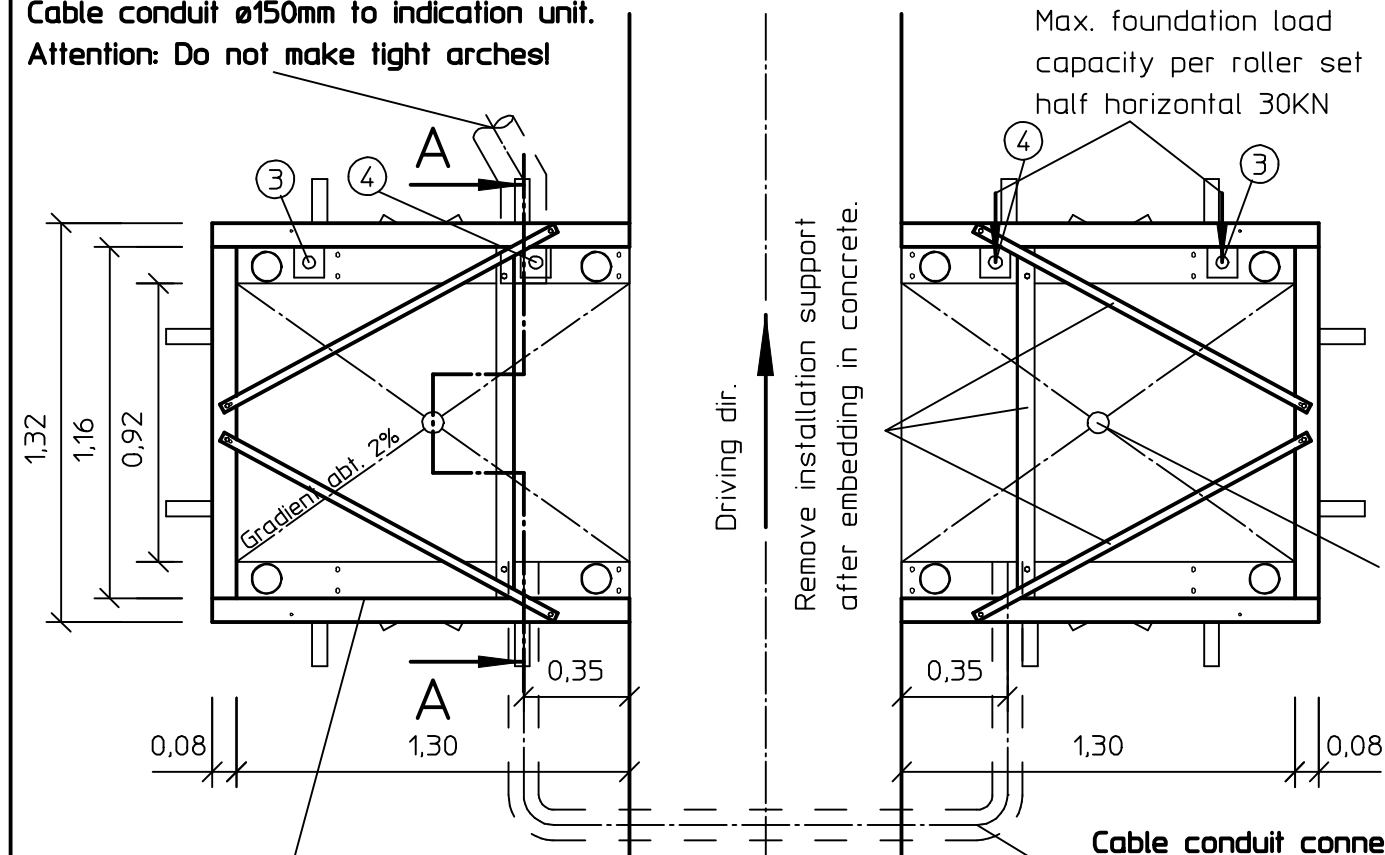


Z = Clearance of the pit guards = clearance width of install. frames brake tester
Z + 2.60



Quality of concrete
min. C20/25 (EN 206-1)

Cable conduit $\varnothing 150\text{mm}$ to indication unit.
Attention: Do not make tight arches!



Angle steel pit frame according to drawing No. F7201, sheet 3 (not standard equipment); rectangularity of foundation frame must be checked before concreting and adjusted if necessary.
The two installation frames have to be aligned exactly. Frame must be concreted exactly horizontal (max. deviation $\pm 3\text{mm}$) and flush with finished floor level.

Dim. Z (MAHA recomm. 0,90m - 1,05m) as per customer. If dimension is beyond MAHA recommendation, please contact us.
Track dimensions min and max. have to correspond with vehicles being tested.

Finished floor must be horizontal in the area of the Brake Tester!

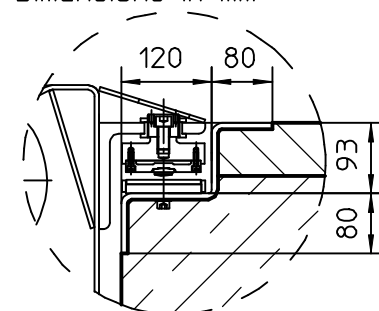
Before embedding in concrete, the claws must be bent downwards

The fixing latches ref. no. 3+4 of IW7 installation frames have to be positioned at front side in driving direction.

Pit safety GSQ does not require any cable conduits.
Cable conduit for pit safety GSL see Drawing No. F1601

detail X

M 1:10
Dimensions in mm

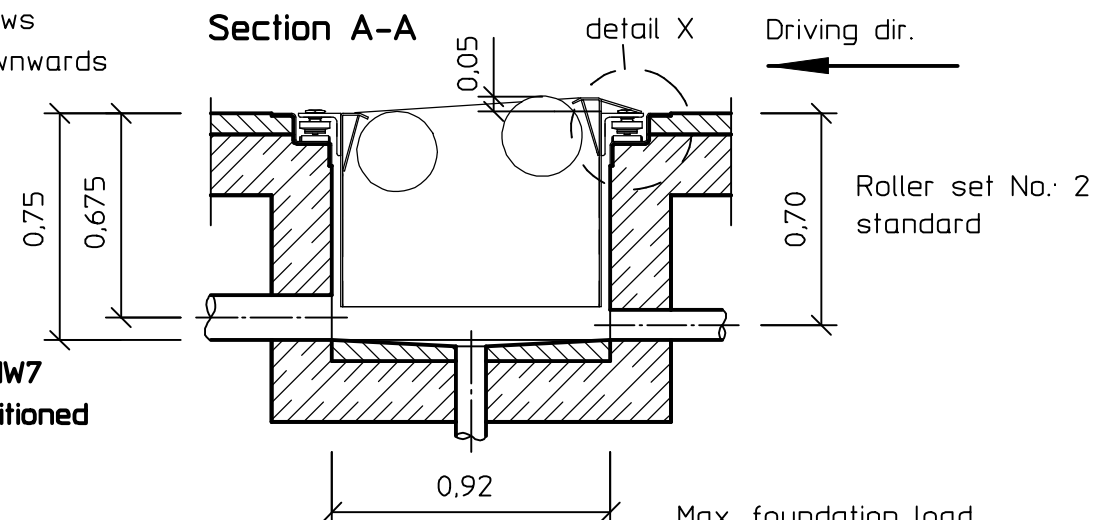


Water drainage on request. Please observe building regulations of drainage!

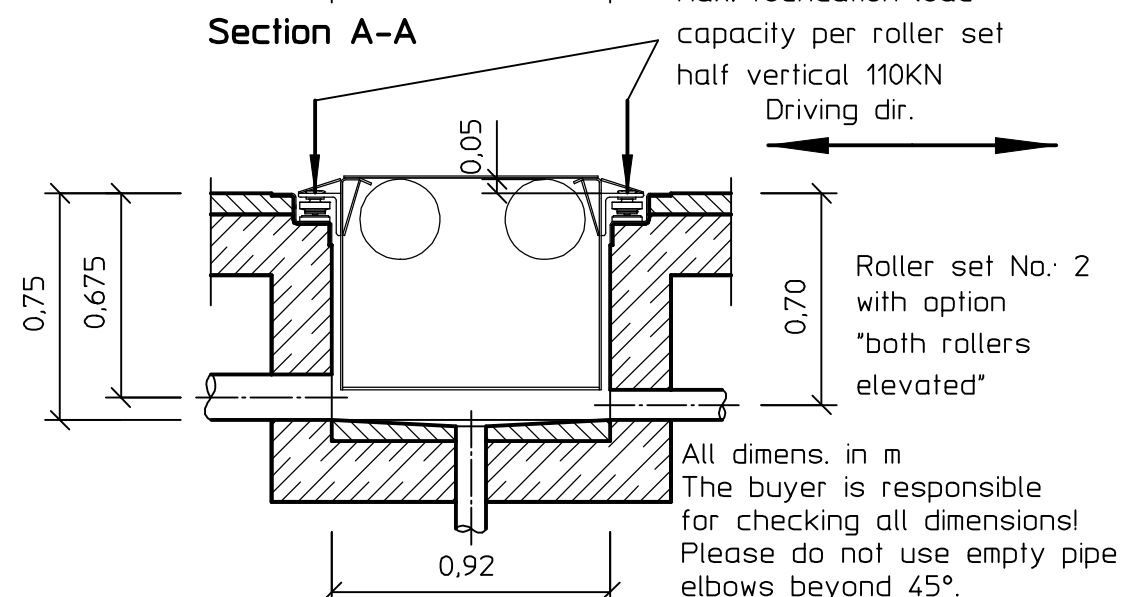
Cable conduit connection right-left $\varnothing 100\text{mm}$ below pit floor

Brake Tester IW7
Roller set No.: 2
with working pit
Option: Surface for weighing system

Section A-A



Section A-A

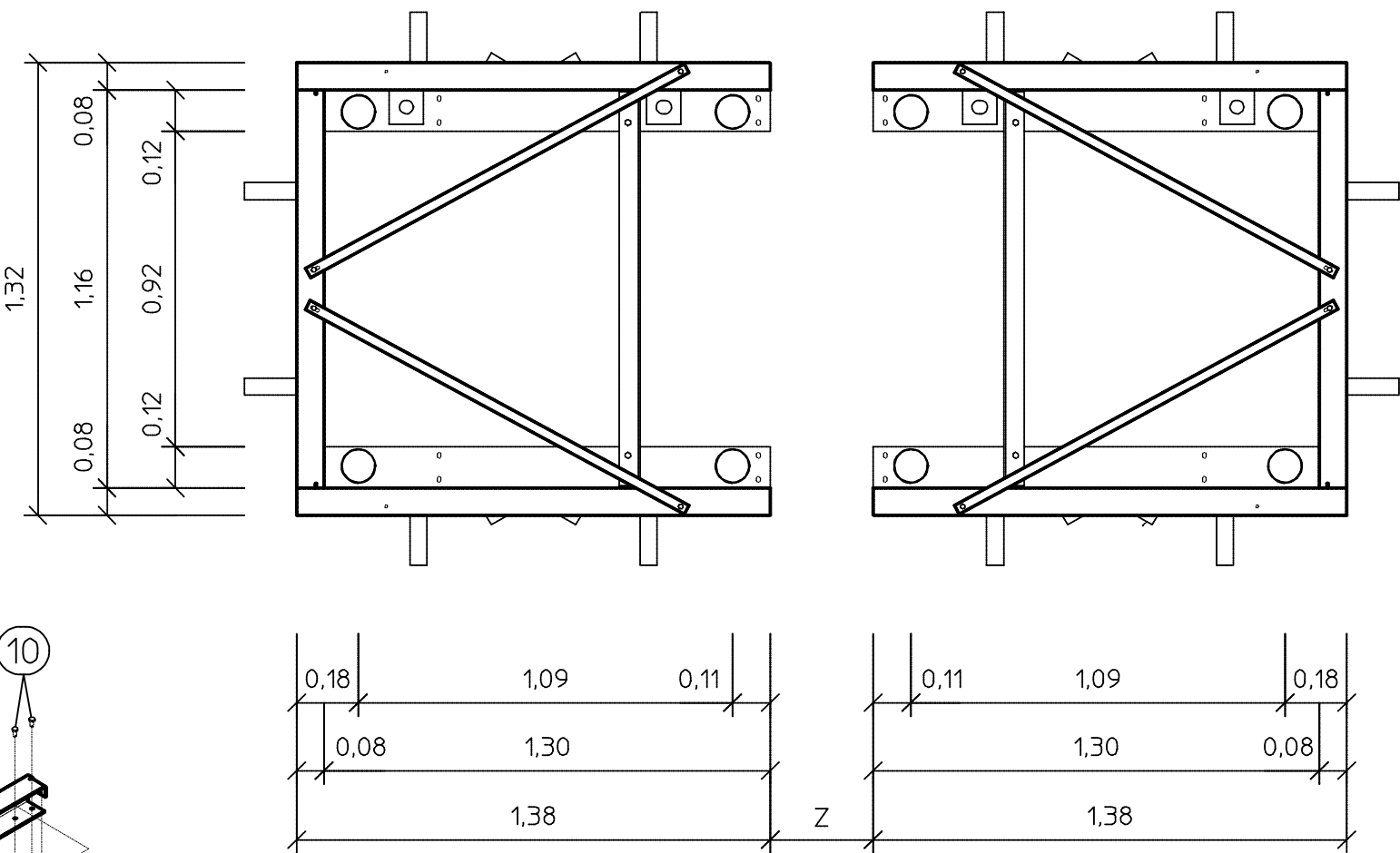
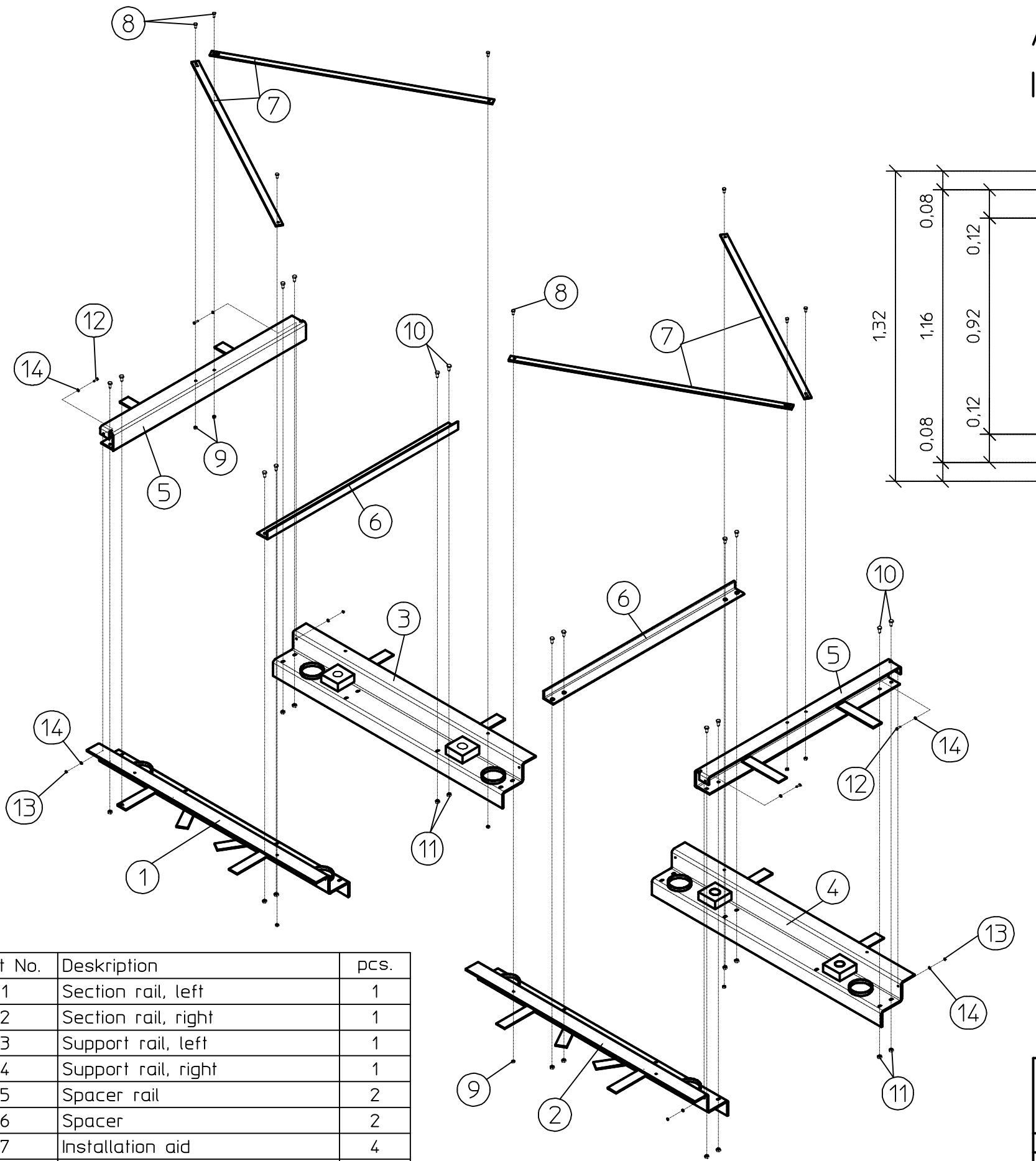


Power supply: Power line to display unit, cable guide from the rear and overhang approx. 2m.


driving power in kW	fuse protection in A slow	Power line
2x 9	50	3x 400V+N+PE
2x 11	63	3x 400V+N+PE
2x 16	80	3x 400V+N+PE

overhang size U in mm		motor transmission 1:1	motor transmission 3:4
131		131	162
Bearbeitungsmaße ohne Toleranzangabe nach DIN ISO 2768-mK		Schutzvermerk nach DIN 34 beachten!	Maßstab 1:25
Länge		Datum	Name
über 0,5-6		Bearb. 26.01.1998	Grf.
über 6-30		Gepr. 15.03.2007	Ths
über 30-120		Norm	
über 120-400			
über 400-1000			
über 1000-2000			
über 2000-4000			
C 6391		08.01.2007	Ths.
Ind. Änd.-Nr.		Datum	Name
Ursprung:		Ers. f.: 04008 00.01002	Ers. d.:
Benennung		Fpl IW7 RS2 mit Grube mit Waage	
Zeichnungsnummer		F7201	
Index		C	
Blatt		1 von 4	

Assembly of angle iron installation frame
IW7 RS2 with working pit



Part No.	Deskription	pcs.
1	Section rail, left	1
2	Section rail, right	1
3	Support rail, left	1
4	Support rail, right	1
5	Spacer rail	2
6	Spacer	2
7	Installation aid	4
8	Hexagon head screw M8x16	8
9	Nut M8-8	8
10	Hexagon head screw M10x20	16
11	Nut M10-8	16
12	Hexagon head screw M6x20	4
13	Nut M6	4
14	Washer M6	8

Bearbeitungsmaße ohne Toleranzangabe nach DIN ISO 2768-mK				Schutzvermerk nach DIN 34 beachten!		Maßstab 1:20		Gewicht	
						Werkstoff, Halbzeug, Rohteil-Nr. usw English			
Länge		Toleranz			Datum	Name		Benennung Winkleisenrahmen IW7 RS2 geteilt	
über 0,5-6		±0,1		Bearb	08.01.2007	Ths.			
über 6-30		±0,2		Gepr	15.03.2007	Ths			
über 30-120		±0,3		Norm					
über 120-400		±0,5							
über 400-1000		±0,8							
über 1000-2000		±1,2							
über 2000-4000		±2,0							
C	6391					Zeichnungsnummer		Index	Blatt
						F7201		C	3
								von 4	
Ind.	Änd.-Nr.	Datum	Name	Ursprung:		Ers. f.:		Ers. d.:	